

civilogistix
500 SUN VALLEY DRIVE, STE H3, ROSWELL, GA 30076
(404) 594-4403 - civilogistix.com

EROSION CONTROL PLAN
PROJECT: LAKE WALES CAR WASH
LAKE WALES, FL 33853 FL

SHEET NUMBER
C502

PROJECT NUMBER
19219

DATE
NOVEMBER 27, 2019

REVISIONS

1	FDOT COMMENTS 02-20-20
---	------------------------

VEGETATIVE MEASURES

CODE	PRACTICE	DETAIL	MAP SYMBOL	DESCRIPTION
Bf	BUFFER ZONE			AN UNDISTURBED NATURAL VEGETATION BUFFER ZONE THAT PROVIDES PROTECTION FROM ADJACENT PROPERTIES AND SURROUNDING AREAS TO PREVENT EROSION AND TO PROVIDE AESTHETIC VALUE TO THE PROJECT.
Cs	COASTAL DUNE (WITH VEGETATION)			PLANTING VEGETATION ON DUNES THAT ARE GENERATED ARTIFICIALLY CONSTRUCTED OR REGENERATED.
Ds1	DISTURBED AREA STABILIZATION (WITH MULCHING ONLY)			ESTABLISHING TEMPORARY PROTECTION FOR DISTURBED AREAS WHERE SEEDING MAY NOT HAVE A SUFFICIENT LEAD TIME TO PRODUCE AN EROSION RETARDING COVER.
Ds2	DISTURBED AREA STABILIZATION (WITH TEMPORARY SEEDING)			ESTABLISHING TEMPORARY VEGETATIVE COVER WITH FAST GROWING SPECIES ON DISTURBED AREAS.
Ds3	DISTURBED AREA STABILIZATION (WITH PERMANENT VEGETATION)			ESTABLISHING PERMANENT VEGETATIVE COVER SUCH AS TREES, SHRUBS, VINES, GRASSES, SOIL OR LEGUMES ON DISTURBED AREAS.
Ds4	DISTURBED AREA STABILIZATION (WITH SOILING)			A PERMANENT VEGETATIVE COVER USING SOILS ON HIGHLY ERODIBLE OR CRITICALLY ERODED LANDS.
Du	DUST CONTROL ON DISTURBED AREAS			CONTROLLING SURFACE AND AIR MOVEMENT OF DUST ON CONSTRUCTION SITES, ROADWAYS AND SIMILAR SITES.
Fi-Co	FLOCCULANTS/COAGULANTS			THE LAND APPLICATION OF PRODUCTS CONTAINING ANIONIC FLOCCULANTS & COAGULANTS TO ASSIST IN THE SEPARATION OF SUSPENDED SOLIDS FROM RUNOFF WATER.
Ss	STRIPBANK STABILIZATION (PERMANENT VEGETATION)			THE USE OF PERMANENT VEGETATIVE PLANT MATERIALS TO MAINTAIN AND PREVENT OR RESTORE AND REPAIR SMALL PERMANENT EROSION PROBLEMS.
Ss	SLOPE STABILIZATION			A PROTECTIVE COVERING USED TO PREVENT EROSION OF SLOPES, SLOPE LINES OR CHANNELS.
Tac	TACKERS AND BINDERS			SUBSTANCE USED TO ANCHOR/STABILIZE OR MAY BE COMBINED WITH ORGANIC MATERIAL TO BIND TOGETHER.

STRUCTURAL PRACTICES

CODE	PRACTICE	DETAIL	MAP SYMBOL	DESCRIPTION
Cd	CHECKDAM			A SMALL TEMPORARY BARRIER OR DAM CONSTRUCTED ACROSS A CHANNEL TO REDUCE THE AREA OF CONCENTRATED FLOW.
Ch	CHANNEL STABILIZATION			IMPROVING, CONSTRUCTING OR STABILIZING AN OPEN CHANNEL, EXISTING STREAM, OR DITCH.
Co	CONSTRUCTION EXIT			A CRUSHED STONE PAD LOCATED AT THE CONSTRUCTION SITE EXIT TO THE ADJACENT PROPERTY TO PREVENT MUD FROM TIRING THEREBY PROTECTING PUBLIC AREAS.
Cr	CONSTRUCTION ROAD			A TRAVEL WAY CONSTRUCTED AS PART OF A CONSTRUCTION PLAN INCLUDING ACCESS ROADS, SUBSIDIZED ROADS, AND OTHER ROUTES FOR VEHICLE TRANSPORTATION ROUTES.
Dc	STREAM DIVERSION CHANNEL			A TRAVEL WAY CONSTRUCTED AS PART OF A CONSTRUCTION PLAN INCLUDING ACCESS ROADS, SUBSIDIZED ROADS, AND OTHER ROUTES FOR VEHICLE TRANSPORTATION ROUTES.
Dj	DIVERSION			AN EARTH CHANNEL OR DITCH LOCATED ABOVE OR BELOW OR ACROSS A SLOPE TO DIVERT FLOW THAT MAY BE A TEMP. GRADY OR PERMANENT STRUCTURE.
Dn1	TEMPORARY CONDUIT STRUCTURE			A FLEXIBLE CONDUIT OF HEAVY-DUTY FABRIC OR OTHER MATERIAL DESIGNED TO SAFELY CONDUCT SURFACE RUNOFF DOWN A SLOPE.
Dn2	PERMANENT CONDUIT STRUCTURE			A PAVED CHUTE PIPE SECTIONAL STRUCTURE DESIGNED TO SAFELY CONDUCT SURFACE RUNOFF DOWN A SLOPE.
Fr	FILTER RING			ROCK FILLED BASKETS WHICH ARE HAND PLACED INTO POSITION FORMING SOIL STABILIZING STRUCTURES.
Ga	GABION			ROCK FILLED BASKETS WHICH ARE HAND PLACED INTO POSITION FORMING SOIL STABILIZING STRUCTURES.
Gr	GRACE STABILIZATION STRUCTURE			PERMANENT STRUCTURES INSTALLED TO PROTECT SLOPES OR CRITICAL OPENINGS TO PREVENT EROSION OR TO CHANGE THE SLOPE WOULD BE CONSTRUCTED TO PREVENT WATER TO FORM GULLIES.
Lv	LEVEL SPREADER			A STRUCTURE TO DISPERSE CONCENTRATED FLOW OF WATER INTO A WIDER AREA TO PREVENT EROSION. THIS SHOULD BE CONSTRUCTED ONLY IN UNDESIRABLE SOILS.
Rd	ROCK FILTER DAM			A PERMANENT OR TEMPORARY STONE FILTER DAM INSTALLED TO CONTROL SMALL STREAMS OR DRAINAGE WAYS.
Re	RETAINING WALL			A WALL INSTALLED TO STABILIZE CUT SLOPES OR TO PREVENT EROSION. PERMISSIBLE SLOPES ARE NOT OBTAINABLE. EACH RETENTION WALL REQUIRES SPECIAL DESIGN.
Rt	RETROFITTING			A PERMANENT STRUCTURE PLACED IN FRONT OF A PERMANENT STRUCTURE TO PREVENT ROAD CUTS FROM EROSION TO SERVE AS A TEMPORARY SEDIMENT FILTER.
Sd1	SEDIMENT BARRIER			A BARRIER TO PREVENT SEDIMENT FROM ENTERING A WATERWAY. IT MAY BE BARRIERS MADE OF STRAW OR HAY, BRUSH LOGS, LOGS AND BRUSH, OR A SEDIMENT FENCE. THE BARRIERS ARE USUALLY TEMPORARY AND INEXPENSIVE.
Sd2	SEDIMENT TRAP			AN APPROVED AREA CREATED BY EXCAVATING AREAS A STREAM CHANNEL. THE EXCAVATED AREA WILL BE FILLED AND STABILIZED ON COMPLETION OF CONSTRUCTION ACTIVITIES.
Sd3	TEMPORARY SEDIMENT BASIN			A CONCENTRATED AREA OF SEDIMENT WHICH IS TO BE REMOVED FROM THE SURFACE OF THE SITE. THE BASIN WILL BE BARRIERS MADE OF STRAW OR HAY, BRUSH LOGS, LOGS AND BRUSH, OR A SEDIMENT FENCE. THE BARRIERS ARE USUALLY TEMPORARY AND INEXPENSIVE.
Sd4	TEMPORARY SEDIMENT TRAP			A BARRIER TO PREVENT SEDIMENT FROM ENTERING A WATERWAY. IT MAY BE BARRIERS MADE OF STRAW OR HAY, BRUSH LOGS, LOGS AND BRUSH, OR A SEDIMENT FENCE. THE BARRIERS ARE USUALLY TEMPORARY AND INEXPENSIVE.
Sk	SURFACE FILTER SPONGE			A PERMANENT STRUCTURE INSTALLED TO PROTECT SLOPES OR CRITICAL OPENINGS TO PREVENT EROSION OR TO CHANGE THE SLOPE WOULD BE CONSTRUCTED TO PREVENT WATER TO FORM GULLIES.
SpB	SEEP BERM			A BARRIER TO PREVENT SEEPAGE FROM THE SURFACE OF THE SITE. THE BARRIER WILL BE BARRIERS MADE OF STRAW OR HAY, BRUSH LOGS, LOGS AND BRUSH, OR A SEDIMENT FENCE. THE BARRIERS ARE USUALLY TEMPORARY AND INEXPENSIVE.
Sr	TEMPORARY STREAM CROSSING			A TEMPORARY BRIDGE OR CULVERT-TYPE STRUCTURE PROTECTING A STREAM OR DITCH FROM EROSION BY CROSSING CONSTRUCTION EQUIPMENT.
St	STORM DRAIN OUTLET PROTECTION			A PAVED OR SHORT SECTION OF PIPE PLACED AT THE OUTLET OF A STORM DRAIN SYSTEM PREVENTING EROSION FROM THE CONCENTRATED RUNOFF.
Sv	SURFACE ROUGHENING			A METHOD OF SURFACING WITH HORIZONTAL DEPRESSIONS ON A CONCRETE OR ASPHALT SURFACE TO IMPROVE DRAINAGE AND TO PROVIDE MULTIPLE SEDIMENT CHAMBERS.
Tp	TOPSOILING			THE PRACTICE OF STRIPPING OFF THE TOPSOIL OF A DISTURBED AREA AND SPREADING IT OVER THE DISTURBED AREA FOR THE COMPLETION OF CONSTRUCTION ACTIVITIES.
Wt	VEGETATED WATERWAY CONDUITANCE CHANNEL			PAVED OR VEGETATIVE WATER OUTLET FOR DIVERSIONS, TERRACES, BERMS, DIKES OR SIMILAR STRUCTURES.

MULCH/ SEED RATES

CODE	PLANTING DATE	SPECIES	APPLICATION RATE
Ds1	ANYTIME	HAY OR DRY STRAW	2" - 4"
Ds1	ANYTIME	WOOD CHIPS/ BARK/ SAWDUST	2" - 3"
Ds2	SEP 1 - JAN 1	WINTER RYE (GRAPE SEED)	20 lbs/JAC
Ds2	JAN 1 - FEB 15	ANNUAL RYE (SILVIA TRILISTATA)	40 lbs/JAC
Ds2	FEB 15 - MAR 15	ANNUAL RYE (SILVIA TRILISTATA)	10 lbs/JAC
Ds2	MAR 15 - JUN 15	VEGETABLE WASTE (SILVIA TRILISTATA)	4 lbs/JAC
Ds2	JUN 15 - SEP 1	PEARL MILLET (PENNISETUM GLAUCUM)	50 lbs/JAC
Ds2	ANYTIME	FERTILIZER (10-10-10)	500-700 lbs/JAC
Ds2	ANYTIME	MULCH (WHEAT STRAW)	2 1/2 TAC
Ds2	ANYTIME	LIME	1 to 2 TAC
Ds3	MAR 1 - MAR 31	COMMON BERMLUDA (HILLED SEED)	10 lbs/JAC
Ds3	APR 1 - APR 30	COMMON BERMLUDA (HILLED SEED)	40 lbs/JAC
Ds3	MAY 1 - MAY 31	TALL FESCUE	50 lbs/JAC
Ds3	JUN 1 - JUN 30	COMMON BERMLUDA (HILLED SEED)	6 lbs/JAC
Ds3	JUL 1 - JUL 31	FERTILIZER (8-12-12)	1500 lbs/JAC
Ds3	AUG 1 - FEB 28	FERTILIZER (8-12-12)	2 1/2 TAC
Ds3	ANYTIME	MULCH (WHEAT STRAW)	1 to 2 TAC
Ds3	ANYTIME	LIME	1 to 2 TAC

PHASE SCHEDULE

- INSTALL SILT FENCE & CONSTRUCTION EXIT
- BEGIN CLEARING, GRUBBING & GRADING ACTIVITIES; INSTALL NEW SILT FENCE AS NEEDED
- STABILIZE DISTURBED AREAS WITHIN 14 DAYS OF LAND DISTURBANCE WITH MULCH OR SEEDING
- BEGIN INSTALLATION OF STORM DRAINAGE SYSTEMS AND DETENTION PONDS
- INSTALL TEMPORARY SEDIMENT TRAPS AS NEW STORM STRUCTURES ARE COMPLETED
- INSTALL EROSION CONTROL MATTING AND BLANKETS IN ALL CRITICAL WORK ZONES
- INSTALL RIP-RAP AT EACH PIPE OUTLET
- INSTALL AGGREGATE BASE COURSE IN PAVING AREAS & PERMANENT GRASSING AS GRADING IS COMPLETE

24 HOUR CONTACT

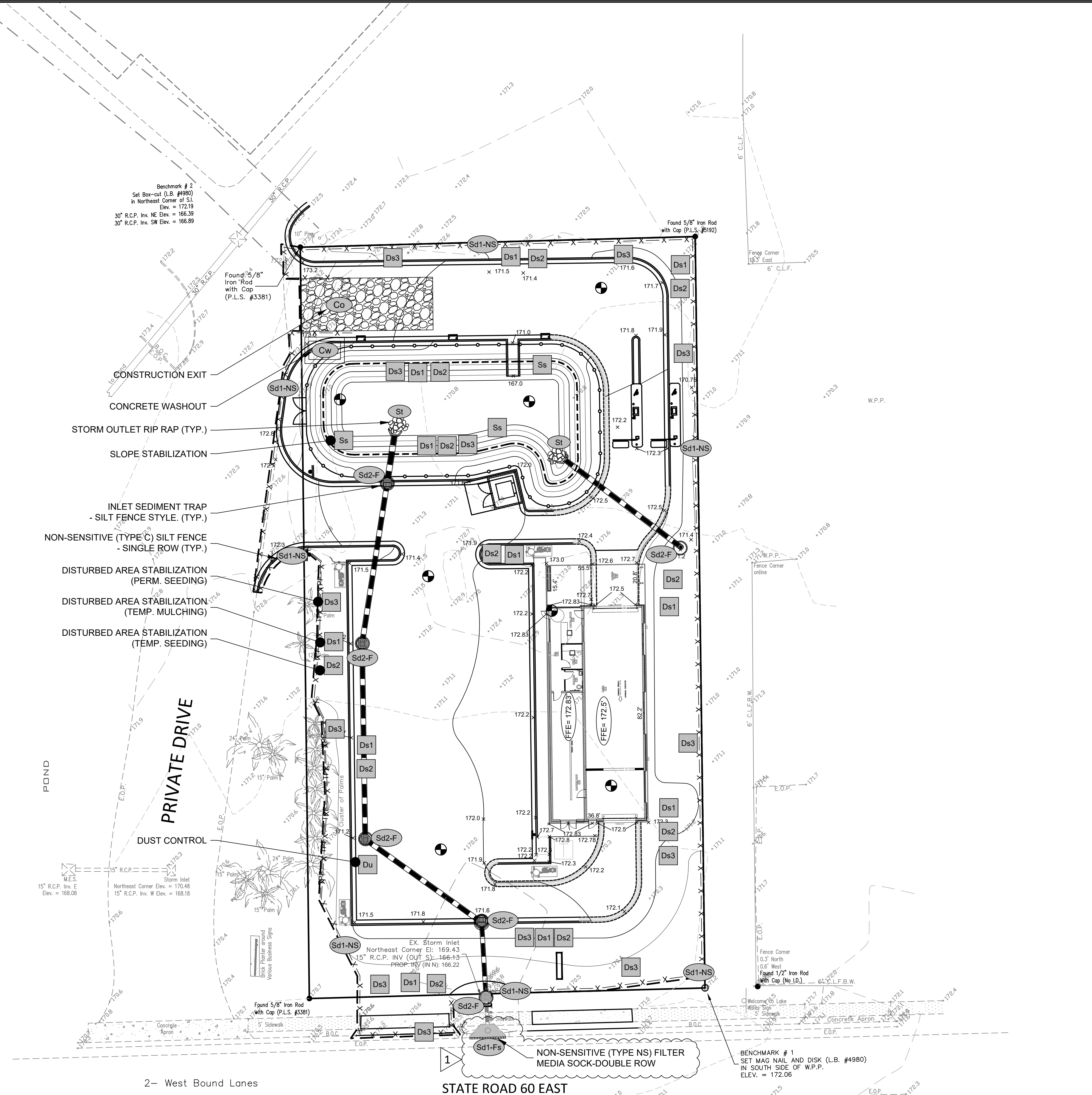
CHRIS SALEM
(813)341-3654
ALIERON INVESTMENT MANAGEMENT
3401 W CYPRESS ST STE 101
TAMPA, FL 33607

SOIL TYPES

SOIL DESCRIPTIONS OBTAINED FROM A SOIL SURVEY OF POLK COUNTY, FLORIDA.
MAP SYMBOL - DESCRIPTION - SLOPES
3 - CHANDLER SAND, 0 TO 5 PERCENT SLOPES

EROSION CONTROL LEGEND

	Co	CONSTRUCTION EXIT (TEMP.)
	Sb1	SEDIMENT BARRIER (TEMP.)
	Sd2	SEDIMENT TRAP (TEMP.)
	Rt	RETROFITTING (TEMP.)
	St	STORM OUTLET RIP-RAP
	Sv	SURFACE ROUGHENING
	Ds1	DISTURBED AREA STABILIZATION (MULCH)
	Ds2	DISTURBED AREA STABILIZATION (TEMP. SEED)
	Ds3	DISTURBED AREA STABILIZATION (PERMANENT)



TOTAL SITE AREA = 0.98 ACRES
LIMITS OF LAND DISTURBANCE = 0.99 ACRES

EROSION, SED., & POL. CONTROL PLAN

811
IF YOU DIG FLORIDA,
CALL US FIRST!
UTILITIES PROTECTION CENTER
IT'S THE LAW
Know what's below.
Call before you dig.

Monday, January 27, 2020 08:28:23am (4/18/20)
D:\Projects\19219\19219 - Lake Wales Car Wash\19219 Velocity Map.dwg [502]
User: jwhitfield
Title: 19219 - Lake Wales Car Wash\19219 Velocity Map.dwg
Scale: 1"=20'
Date: 11/27/19
Author: jwhitfield
Plot Date: 11/27/19
Plot Time: 11:27:19 AM
Plot Path: D:\Projects\19219\19219 - Lake Wales Car Wash\19219 Velocity Map.dwg
Plot Scale: 1"=20'
Plot Orientation: Landscape
Plot Size: 11.00 x 17.00
Plot Units: Feet
Plot Color: Black
Plot Lineweight: 0.20
Plot Style: Standard
Plot Weight: 0.20
Plot Color: Black
Plot Lineweight: 0.20
Plot Style: Standard
Plot Weight: 0.20