

### BENCHMARKS

- BM #1: SET MAG NAIL AND DISK IN SOUTH SIDE OF W.P.P. (L.B. #4980) (DESCRIPTION), N-1294531.2545, E-800248.1869, ELV-172.06, (NAVD 88), SOUTHWEST PROPERTY PIN (LOCATION).
- BM #2: SET BOX-CUT (L.B. #4980) IN NORTHEAST CORNER OF S.I. (DESCRIPTION), N-1294812.1707, E-800094.7302, ELV-172.19, (NAVD 88), NORTHWEST PROPERTY PIN (LOCATION).

### SITE UTILITY NOTES

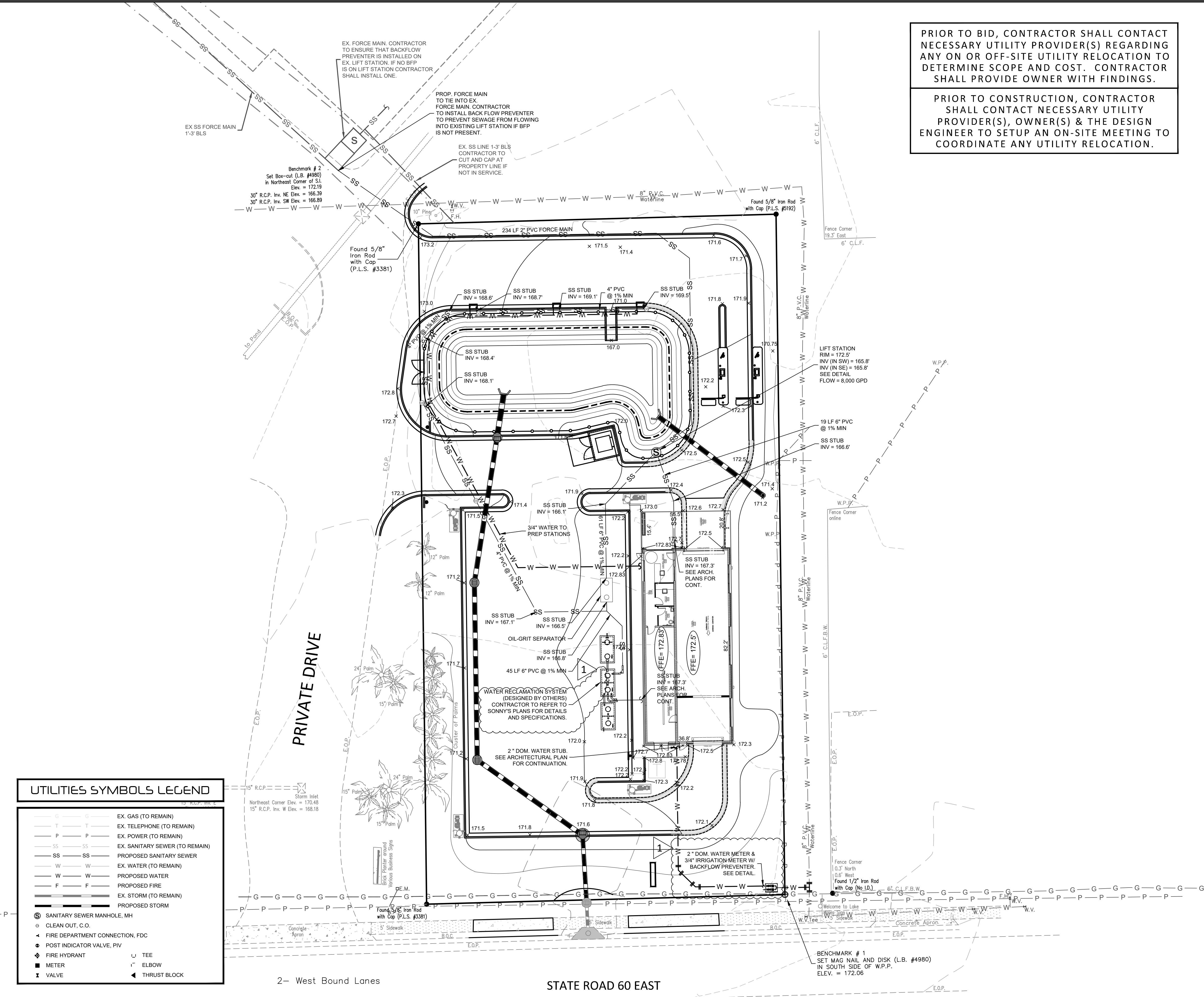
- ALL WATER METERS, EXISTING AND PROPOSED, SHALL BE ADJUSTED AS NECESSARY TO BE FLUSH WITH "AS-CONSTRUCTED" FINISHED GRADES.
- THE CONTRACTOR SHALL ADJUST ALL MANHOLE COVERS, VALVE COVERS, CLEAN OUTS, VAULTS & BOXES EXISTING AND PROPOSED, TO "AS-CONSTRUCTED" FINISHED GRADE.
- CONTRACTOR IS TO COORDINATE INSTALLATION OF GAS LINES WITH LOCAL GAS COMPANY. CONTRACTOR SHALL COORDINATE THE TYING IN OF INDIVIDUAL GAS METERS TO THE MAIN. CONTRACTOR, IN CONJUNCTION WITH THE GAS COMPANY SHALL DETERMINE THE AMOUNT OF GAS LINE HE IS TO PROVIDE OUTSIDE THE GAS COMPANY'S ALLOWANCE.
- REFER TO INTERIOR PLUMBING DRAWINGS FOR TIE-IN OF ALL UTILITIES.
- THE LOCATION AND ELEVATION OF EXISTING UTILITIES SHALL BE VERIFIED IN FIELD PRIOR TO INSTALLATION OF ANY NEW PIPE LINES AND ALL CONFLICTS SHALL BE BROUGHT TO THE ENGINEER'S ATTENTION. DRAWINGS DO NOT PURPORT TO SHOW ALL EXISTING UTILITIES.
- THRUST BLOCKS SHALL BE LOCATED AT ALL WATER PIPE VALVES, VERTICAL BENDS, AND VERTICAL ELBOWS AND TEES, HORIZONTAL ELBOWS AND TEES. FIRE HYDRANTS SHALL BE SIZED AND INSTALLED IN ACCORDANCE WITH NFPA BULLETIN NO. 24, SECTION 96, PARAGRAPHS 9605, 9606, AND TABLE 9605.
- SANITARY SEWER LINE SHALL BE OF DUCTILE IRON PIPE AT ALL LOCATIONS WHERE SANITARY LINE CROSSES ABOVE OR BELOW A STORM SEWER LINE.
- SANITARY SEWER CLEAN OUTS SHALL BE INSTALLED AT ALL BENDS AND AT A MAXIMUM SPACING OF 75 (SEVENTY-FIVE) FEET.
- WHEN WATER MAINS CROSS SEWERS, A MINIMUM VERTICAL SEPARATION OF 18 INCHES MUST BE PROVIDED BETWEEN THE TWO PIPES (MEASURED EDGE TO EDGE). AT CROSSINGS, ONE FULL LENGTH OF WATER PIPE MUST BE LOCATED SO THAT BOTH JOINTS ARE AS FAR FROM THE SEWER AS POSSIBLE. FOR SANITARY SEWER INSTALLATION, A HORIZONTAL SEPARATION OF 10 FEET SHALL BE PROVIDED FROM ANY EXISTING OR PROPOSED WATER MAINS OR SERVICE LINES (MEASURED EDGE TO EDGE).
- PIPES UNDERGROUND SHALL BE INSTALLED, TESTED AND APPROVED BEFORE BACKFILLING.
- EXISTING DRAINAGE STRUCTURES TO BE INSPECTED AND REPAIRED AS NEEDED AND EXISTING PIPES TO BE CLEANED OUT TO REMOVE ALL SILT AND DEBRIS.
- CONTRACTOR SHALL BE RESPONSIBLE FOR ANY NECESSARY RELOCATION OF EXISTING UTILITIES SUCH AS POWER AND TELEPHONE POLES AND THE COORDINATION OF SUCH THE PROPER UTILITY OWNER.
- THE PUBLIC WORKS COMMISSION SHALL BE NOTIFIED 24 HOURS PRIOR TO ANY WATER OR SEWER LINE CONSTRUCTION OR REPAIRS.
- ALL WATER MAIN MATERIALS AND WORKMANSHIP SHALL BE IN ACCORDANCE WITH THE CITY OF LAKE WALES "ZONING ORDINANCE," LATEST EDITION.
- THE CONTRACTOR SHALL BE RESPONSIBLE FOR MAINTAINING A MARKED-UP SET OF DESIGN DRAWINGS SHOWING "AS-BUILT" CONDITIONS. THESE "RECORD DRAWINGS" SHALL BE MADE AVAILABLE TO THE DESIGNER AND/OR THE CITY INSPECTOR UPON REQUEST. THE MARK-UPS SHALL BE AT THE SITE AT ALL TIMES AND SHALL BE UTILIZED TO DEVELOP FINAL RECORD DRAWINGS.
- THE CONTRACTOR MUST NOTIFY ENGINEER PRIOR TO COMMENCEMENT OF ANY WATER OR SEWER EXTENSION ACTIVITY AND BEFORE COVERING ANY WATER OR SEWER EXTENSIONS IN ORDER TO COORDINATE REQUIRED CERTIFICATIONS.

### MATERIAL NOTES

- SANITARY SEWER MATERIAL SHALL BE AS SHOWN ON THE PLANS.
- SANITARY SEWER MATERIAL SHALL MEET THE MINIMUM REQUIREMENTS BELOW:  
SDR 35 PVC (FOR COVER BETWEEN 7" AND 16") PER ASTM D3034;  
SDR 26 PVC (FOR COVER BETWEEN 4" AND 7") PER ASTM D3034;  
OR DUCTILE IRON PIPE (FOR COVER LESS THAN 4" AND GREATER THAN 16") PER ASTM A746 & AWWA C150.
- WATER LINES SHALL BE AS FOLLOWS:  
POLYETHYLENE (PE) WATER PIPE AWWA C901, SDR 9 (200 PSI) MINIMUM (LESS THAN 3") OR COPPER TUBING PER ASTM B88, TYPE K (LESS THAN 3"),  
SDR 21 PVC PER ASTM D2241, (2" TO 3"),  
DUCTILE IRON PIPE PER AWWA C151, CLASS 350 (3" OR LARGER), OR  
C900 DR18 PVC PER AWWA C900, CLASS 150, DR18 (4" TO 12").
- PRECAST STRUCTURES MAY BE USED AT THE CONTRACTOR'S OPTION.
- ALL CONCRETE TO HAVE A MINIMUM 28 DAY COMPRESSIVE STRENGTH OF 3000 P.S.I.

PRIOR TO BID, CONTRACTOR SHALL CONTACT NECESSARY UTILITY PROVIDER(S) REGARDING ANY ON OR OFF-SITE UTILITY RELOCATION TO DETERMINE SCOPE AND COST. CONTRACTOR SHALL PROVIDE OWNER WITH FINDINGS.

PRIOR TO CONSTRUCTION, CONTRACTOR SHALL CONTACT NECESSARY UTILITY PROVIDER(S), OWNER(S) & THE DESIGN ENGINEER TO SETUP AN ON-SITE MEETING TO COORDINATE ANY UTILITY RELOCATION.



#### UTILITIES SYMBOLS LEGEND

— G — G —	EX. GAS (TO REMAIN)
— T — T —	EX. TELEPHONE (TO REMAIN)
— P — P —	EX. POWER (TO REMAIN)
— SS — SS —	EX. SANITARY SEWER (TO REMAIN)
— SS — SS —	PROPOSED SANITARY SEWER
— W — W —	EX. WATER (TO REMAIN)
— W — W —	PROPOSED WATER
— F — F —	PROPOSED FIRE
— S — S —	EX. STORM (TO REMAIN)
— S — S —	PROPOSED STORM
⊙	SANITARY SEWER MANHOLE, MH
⊙	CLEAN OUT, C.O.
+	FIRE DEPARTMENT CONNECTION, FDC
⊙	POST INDICATOR VALVE, PIV
⊙	FIRE HYDRANT
⊙	METER
⊙	VALVE
⊥	TEE
⊥	ELBOW
⊥	THRUST BLOCK

**811** IF YOU DIG FLORIDA... CALL US FIRST!  
UTILITIES PROTECTION CENTER IT'S THE LAW  
Know what's below. Call before you dig.



# UTILITY PLAN



**civilogistix**  
500 SUN VALLEY DRIVE, STE H3, ROSWELL, GA 30076  
(404) 594-4403 - civilogistix.com

**UTILITY PLAN**  
PROJECT: LAKE WALES CAR WASH  
LAKE WALES, FL 33853 FL

**FOR ALIIRON INVESTMENT MANAGEMENT**  
3401 W. CROSS ST, STE 101  
TAMPA, FL 33607

SHEET NUMBER  
**C401**  
PROJECT NUMBER  
**19219**  
DATE  
**NOVEMBER 27, 2019**

REVISIONS  
1 LAKE WALES 02-20-20

Monday, January 27, 2020 08:28:23am  
 D:\Projects\19219\19219 - Lake Wales Car Wash\19219 Utility Map.dwg [C401]  
 User: jwhitfield  
 Plot Date: 1/27/2020 8:28:23 AM  
 Plot Scale: 1" = 20'  
 Plot Path: D:\Projects\19219\19219 - Lake Wales Car Wash\19219 Utility Map.dwg (5 mms)  
 Plot Size: 11.00 x 17.00  
 Plot Orientation: Landscape  
 Plot Color: Black  
 Plot Lineweight: 0.20  
 Plot Linetype: Solid  
 Plot Font: Arial, 10  
 Plot Title: UTILITY PLAN  
 Plot Sheet: C401  
 Plot Project: 19219  
 Plot Date: 11/27/2019  
 Plot User: jwhitfield