

ACCESS CONNECTION PERMIT NO.
 2002-A-190-00012, DRAINAGE PERMIT NO.
 2020-D-190-00007;
 SECTION NUMBER 16130000;
 STATE ROAD SR 60;
 MILEPOST 1.651-1.687.
 PLANS PREPARED FOR: CHRIS SALEMI
 PARCEL ID NUMBER: 28300600000024040
 GOVERNING STANDARD PLANS: FLORIDA DEPARTMENT
 OF TRANSPORTATION, FY 2019-20 STANDARD PLANS FOR
 ROAD AND BRIDGE CONSTRUCTION AND APPLICABLE
 INTERIM REVISIONS (IRS). STANDARD PLANS FOR ROAD
 CONSTRUCTION AND ASSOCIATED IRS ARE AVAILABLE AT
 THE FOLLOWING WEBSITE:
[HTTPS://WWW.FDOT.GOV/DESIGN/STANDARDPLANS](https://www.fdot.gov/design/standardplans)
 APPLICABLE IRS: IR536-001-01, IR521-001-01
 STANDARD PLANS FOR BRIDGE CONSTRUCTION ARE
 INCLUDED IN THE STRUCTURES PLANS COMPONENT.
 GOVERNING STANDARD SPECIFICATIONS:
 FLORIDA DEPARTMENT OF TRANSPORTATION, JANUARY
 2020 STANDARD SPECIFICATIONS FOR ROAD AND BRIDGE
 CONSTRUCTION AT THE FOLLOWING WEBSITE:
[HTTPS://WWW.FDOT.GOV/PROGRAMMANAGEMENT/
 IMPLEMENTED/SPECSBOOKS](https://www.fdot.gov/programmanagement/implemented/specsbooks)

CONSTRUCTION DOCUMENTS FOR:

LAKE WALES CAR WASH

HWY 60, LAKE WALES, FL 33853
 POLK COUNTY, FL

ENGINEER:
CIVILOGISTIX, LLC
DAVID WHITE, P.E.
500 SUN VALLEY DR, STE H3
ROSWELL, GA 30076
TELEPHONE: (404) 594-4403

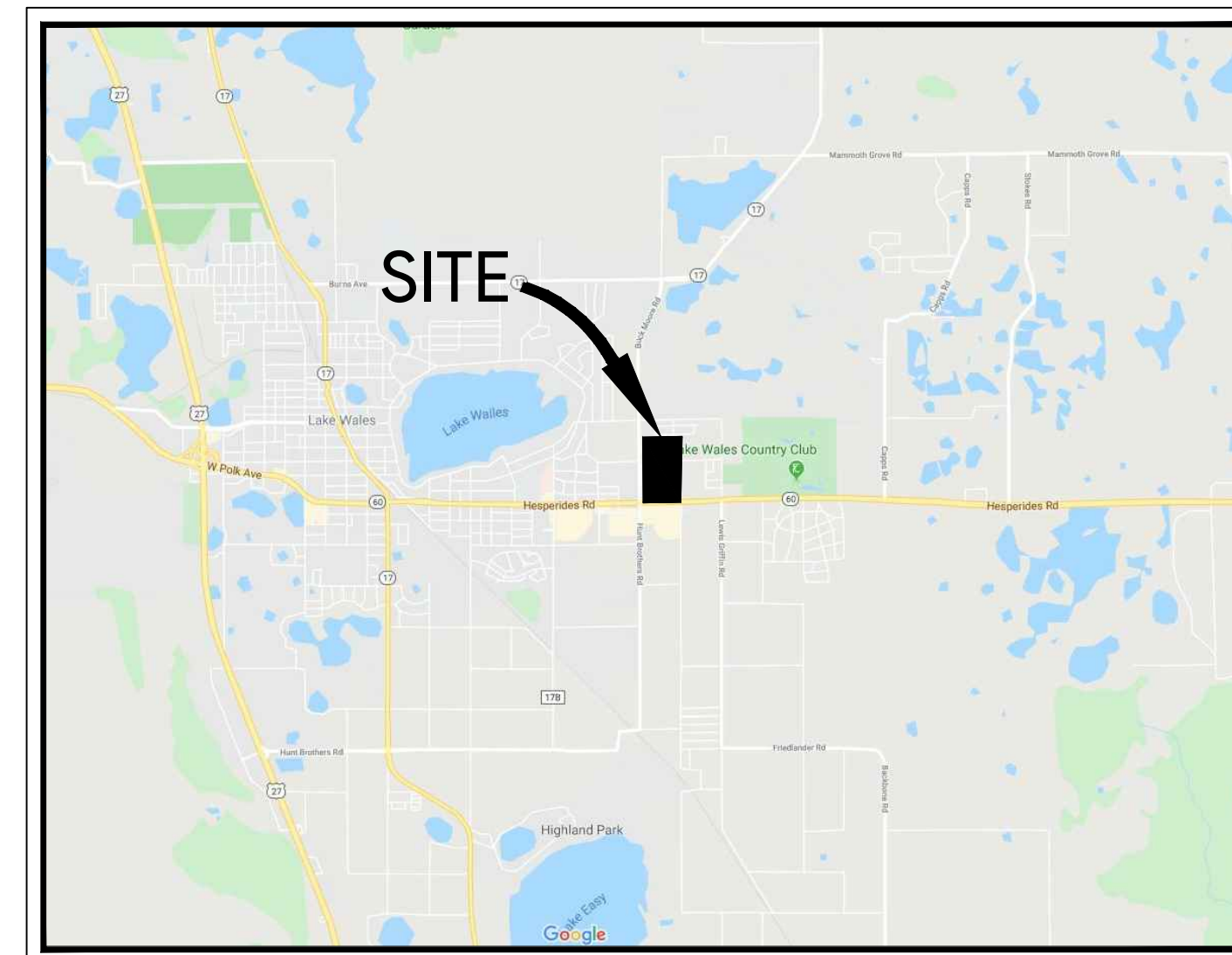
OWNER
AILERON INVESTMENT MANAGEMENT
 3401 W CYPRESS ST STE 101
 TAMPA, FL 33607

CIVIL

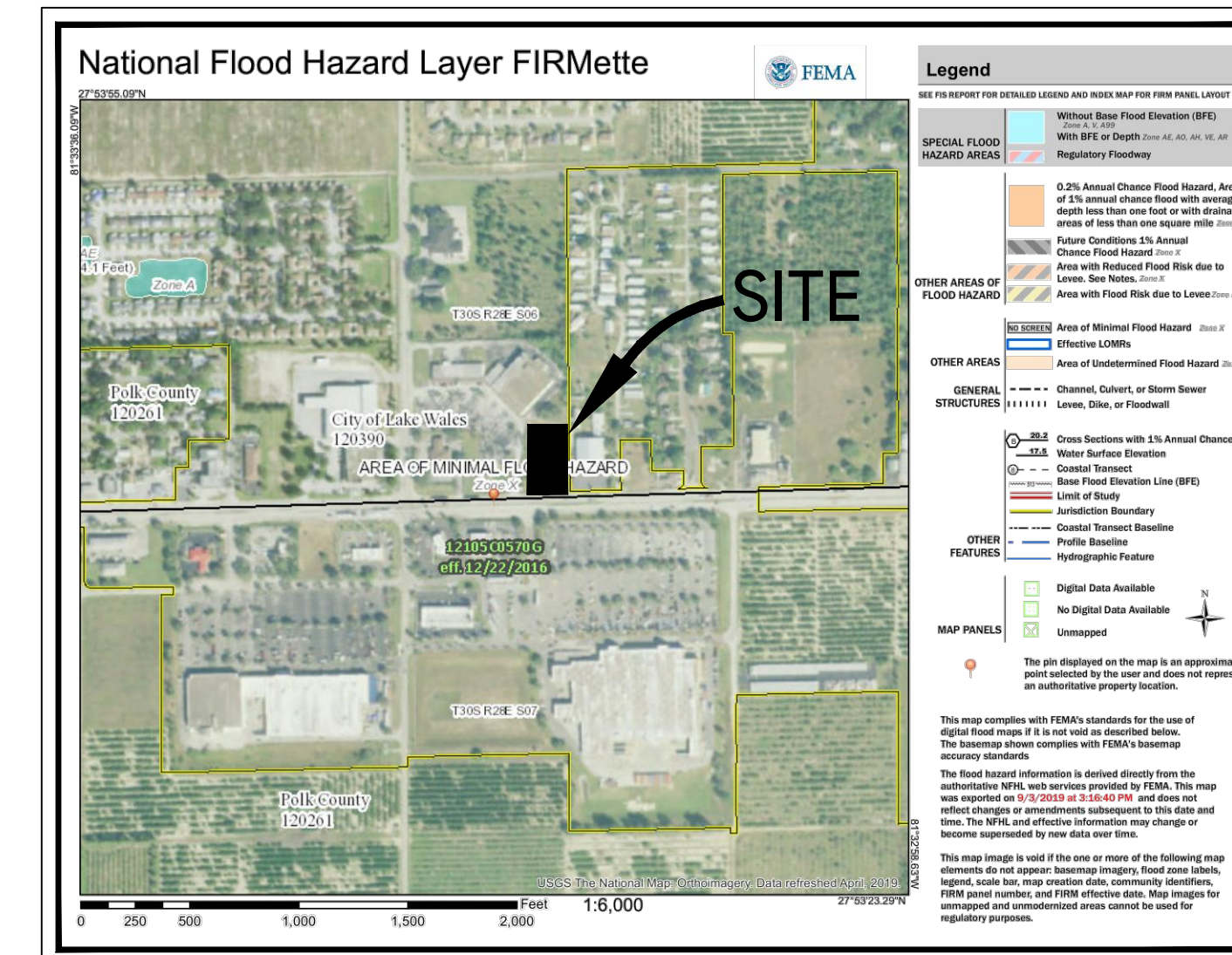
- C001 COVER SHEET
- C002 SURVEY
- C101 EXISTING CONDITIONS
- C201 SITE PLAN
- C301 GRADING PLAN
- C401 UTILITY PLAN
- C502 EROSION CONTROL PLAN
- C504 EROSION CONTROL NOTES
- C701 CONSTRUCTION DETAILS
- C702 CONSTRUCTION DETAILS
- C703 CONSTRUCTION DETAILS
- C704 CONSTRUCTION DETAILS
- C705 CONSTRUCTION DETAILS
- C706 CONSTRUCTION DETAILS
- C707 CONSTRUCTION DETAILS
- C708 CONSTRUCTION DETAILS
- EH EXISTING HYDROLOGY
- PH PROPOSED HYDROLOGY
- WQ WATER QUALITY PLAN

LANDSCAPE/PHOTOMETRIC

- L201 LANDSCAPE PLAN & DETAILS
- P101 PHOTOMETRIC PLAN



VICINITY MAP



FLOOD MAP

GENERAL NOTES

1. LOCAL JURISDICTION: CITY OF LAKE WALES
2. HWY 60, LAKE WALES, FL 33853
3. PROPERTY AREA: 0.98 AC
4. ZONING C-3: HIGHWAY COMMERCIAL
5. FLOOD MAP # 12105C0570G
6. THERE ARE NO STATE WATERS LOCATED ON SITE
7. THERE ARE NO WETLANDS LOCATED ON SITE

DATE: FEBRUARY 20, 2020

24 HOUR CONTACT

CHRIS SALEMI
 (813)341-3654

AILERON INVESTMENT MANAGEMENT
 3401 W CYPRESS ST STE 101
 TAMPA, FL 33607

ANTICIPATED ACTIVITY SCHEDULE

ACTIVITY	1	2	3	4	5	6	7	8	9	10	11	12
1. INSTALL SEDIMENT CONTROLS	■											
2. CLEARING AND GRADING	■											
3. STORM DRAIN INSTALLATION	■											
4. SANITARY SEWER INSTALLATION	■											
5. GRASS (TEMP.) (PERM.)							■					
6. UTILITY INSTALLATION	■											
7. MAINTAIN EROSION CONTROL	■											
8. BLDG. CONST. AND PAVING	■											
9. FINAL LANDSCAPING											■	
10. CLEAN UP												■

EROSION CONTROL MEASURES AND PRACTICES SHALL BE INSTALLED PRIOR TO OR CONCURRENT WITH LAND DISTURBING ACTIVITIES.

civilOGISTIX
 www.civilogistix.com
 (404) 594-4403

1 FDOT COMMENTS
 02-20-20

19219 - LAKE WALES CAR WASH

1