

- 1 EXTERIOR STUDD WALL CONSTRUCTION**  
 • FLAT SLAB (SIDEWALLS)  
 - 6" x 1 1/2" FLANGE METAL STUDS  
 - 24" O.C. - 20ga.  
 - 4" CONTINUOUS FLOOR AND CEILING TRACK  
 - 18ga. - FASTEN w/ 3/8" x 3" LEDGE ANCHOR  
 - 2" MIN. EMBEDMENT) # 30" O.C. MAX  
 - 3 ROWS CONTINUOUS 18ga. FURRING CHANNELS  
 - PRE-PAINTED EXTERIOR 236R WALL PANELS  
 - DRIP CAP (#6092B)  
 - 4" THICK FIBERGLASS INSULATION  
 - 4 MIL POLYETHYLENE VAPOR BARRIER  
 - J-TRIM AT TOP OF LINER PANELS  
 - 236R LINER PANELS # INTERIOR (ATTACH EACH PANEL AT BASE AND TOP w/ (4) EACH #6 SDF#)  
 - 5/8" DENGLASS AT BLOCK VENEER LOCATIONS  
 - BASE TRIM AT BLOCK VENEER LOCATIONS  
 - BLOCK STUDS AT MID-HEIGHT AS SHOWN ON ELEVATIONS
- 2 EXTERIOR STUDD WALL CONSTRUCTION**  
 • FLAT SLAB (ENDWALLS)  
 - 6" x 2" FLANGE METAL STUDS  
 - 24" O.C. - 18ga.  
 - 4" CONTINUOUS FLOOR AND CEILING TRACK  
 - 18ga. - FASTEN w/ 3/8" x 3" LEDGE ANCHOR  
 - 2" MIN. EMBEDMENT) # 30" O.C. MAX  
 - 1 ROW CONTINUOUS 18ga. FURRING CHANNELS  
 - PRE-PAINTED EXTERIOR 236R WALL PANELS  
 - DRIP CAP (#6092B)  
 - 4" THICK FIBERGLASS INSULATION  
 - 4 MIL POLYETHYLENE VAPOR BARRIER  
 - J-TRIM AT TOP OF LINER PANELS  
 - 236R LINER PANELS # INTERIOR (ATTACH EACH PANEL AT BASE AND TOP w/ (4) EACH #6 SDF#)  
 - 5/8" DENGLASS AT BLOCK VENEER LOCATIONS  
 - BASE TRIM AT BLOCK VENEER LOCATIONS  
 - BLOCK STUDS AT MID-HEIGHT AS SHOWN ON ELEVATIONS
- 3 INTERIOR STUDD WALL CONSTRUCTION**  
 - 3 5/8" x 1 1/2" FLANGE METAL STUDS  
 - 24" O.C. - 20ga.  
 - 3 5/8" CONTINUOUS FLOOR AND CEILING TRACK  
 - 18ga. - FASTEN w/ 3/8" x 3" LEDGE ANCHOR  
 - 2" MIN. EMBEDMENT) # 30" O.C. MAX  
 - 236R LINER PANELS # STORAGE SIDE ONLY (ATTACH EACH PANEL AT BASE AND TOP w/ (4) EACH #6 SDF#)  
 - J-TRIM AT TOP OF 236 LINER PANELS  
 - BLOCK STUDS AT MID-HEIGHT AS SHOWN IN ERC630X

**NOTE TO ERECTOR:**  
 INSTALL SA-2 ANGLE TO 15°-0' & 20°-0' ROOF BEAM AT MID-SPAN. RUN VERTICALLY TO GLE IN FLOOR TO PREVENT TEMPORARY BRACING PRIOR TO ROOF INSTALLATION. BRACE WILL PREVENT BEAM TWIST.

**NOTE:**  
 5 FOOT ROOF BEAMS ARE 3' x 12" I 18ga.  
 20 FOOT ROOF BEAMS ARE 3' x 12" I 20ga.

**NOTE:**  
 ROLL-UP DOORS AND INTERIOR SWING DOORS ARE SUPPLIED AND INSTALLED BY JANUS INTERNATIONAL.

**NOTE:**  
 WIRE MESH AND FRAMING FOR WIRE MESH ABOVE UNITS IS NOT BY BETCO.

- NOTES:**
- 6" ROOF INSULATION (R-19) INCLUDED AT ENTIRE OF BUILDING "1". ADDITIONAL 3" UNFACED INSULATION (R-19 + R-11) INCLUDED AT ENTIRE AREA OF BUILDING "1".
  - 4" x 5" KICK-OUT DOWNSPOUTS ARE INCLUDED.
  - ATTACH ALL STUDS TO TRACKS WITH #10 x 5/8" SDF (4 PER STUD).
  - ALL PERSONNEL DOORS ARE BY JANUS.
  - ALL ROLL-UP DOORS ARE BY JANUS.
  - ALL INTERIOR SWING DOORS ARE BY JANUS.
  - NOTE FOR ALL EXTERIOR STUDD WALLS: (SECURE FLOOR TRACK w/ 3/8" x 3" LEDGE ANCHORS (2" MIN. EMBEDMENT) # 30" O.C. MAXIMUM)

**NOTE:** BLOCK ALL LOAD-BEARING INTERIOR & EXTERIOR STUDD WALLS AS SHOWN ON ERC DETAIL A/B/S.

**LEGEND:**

	22ga. INTERIOR COLUMN
	PANEL BY JANUS
	PANEL BY BETCO
	CLIMATE CONTROL

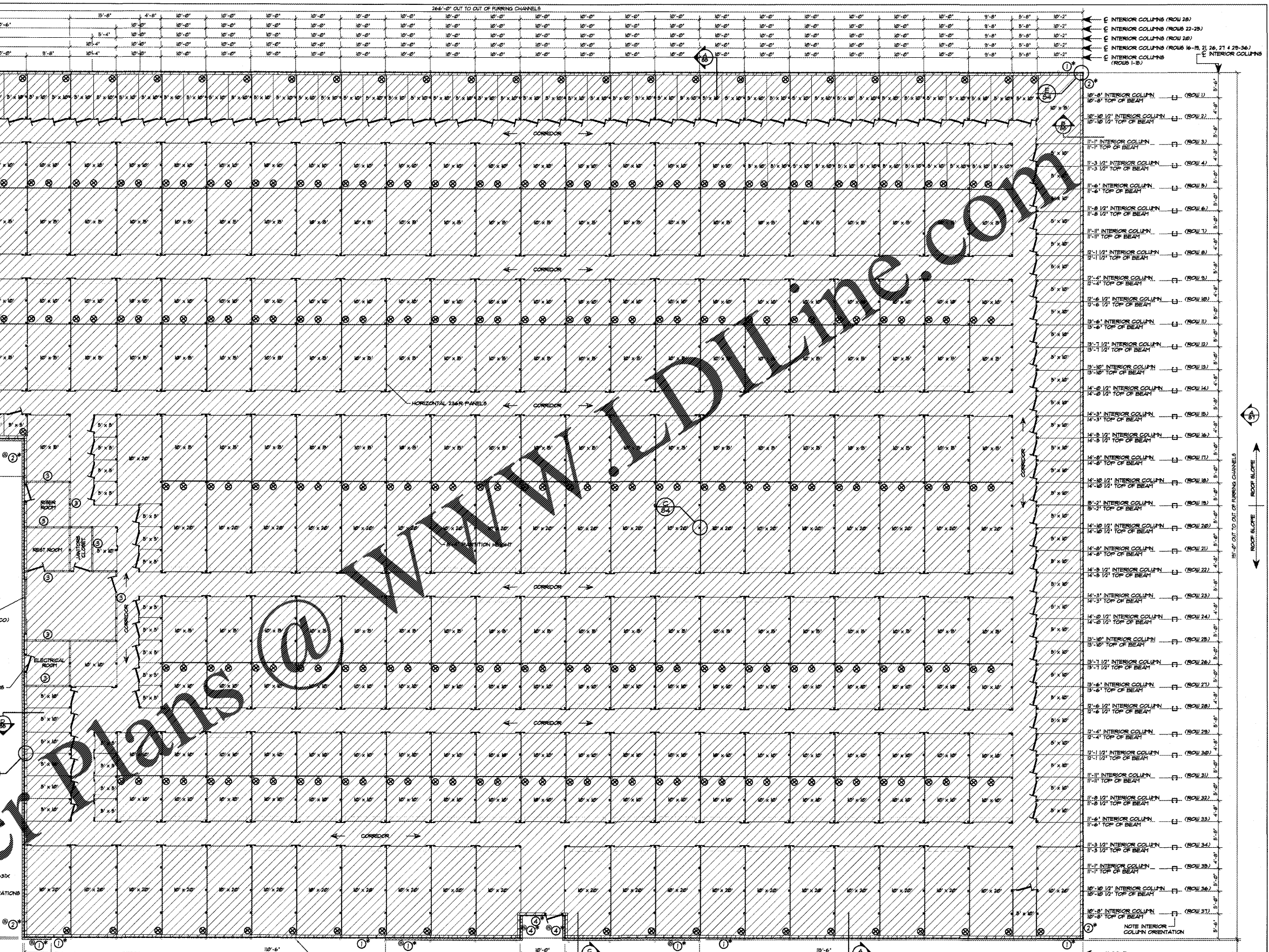
**NOTE COLUMN ORIENTATION**  
 • CORRIDORS PARALLEL TO ROOF BEAMS

CORRIDOR

**NOTE:**  
 SEE ERC602X FOR EXTERIOR SWING DOOR FRAMING IN STUDD WALL.

**STUDD WALL LEGEND**

DESCRIPTION	UNINSULATED	INSULATED*
1 EXTERIOR STUDD WALL CONSTRUCTION AT FLAT SLAB (SIDEWALL) (BLOCK @ MID-HEIGHT)	0 L.F.	492 L.F.
2 EXTERIOR STUDD WALL CONSTRUCTION AT FLAT SLAB (PARAPET ENDWALL) (BLOCK AS SHOWN ON ELEVATIONS)	0 L.F.	412 L.F.
3 INTERIOR STUDD WALL CONSTRUCTION	132 L.F.	0 L.F.
4 EXTERIOR STUDD WALL CONSTRUCTION AT ALCOVE (BLOCK @ MID-HEIGHT)	0 L.F.	20 L.F.



**FLOOR PLAN... BUILDING "1"**

SCALE: 3/32" = 1'-0"

**NOTE:**  
 HALLWAY PANELS AND PARTIAL UNIT PARTITIONS ARE SUPPLIED AND INSTALLED BY JANUS INTERNATIONAL.

**NOTE:**  
 UNIT SIZES SHOWN ARE NOMINAL. ACTUAL CLEAR DIMENSIONS INSIDE UNITS MAY VARY ACCORDING TO FINAL DESIGN OF COMPONENTS.

THIS ITEM HAS BEEN DIGITALLY SIGNED AND SEALED BY REED SELF ON THE DATE ADJACENT TO THE SEAL. PRINTED COPIES ARE NOT CONSIDERED SIGNED AND SEALED AND THE SIGNATURE MUST BE VERIFIED ON ANY ELECTRONIC COPIES.

REED N. SELF  
 No. 59926  
 STATE OF FLORIDA  
 PROFESSIONAL ENGINEER

J. MORRISON  
 AS NOTED

APPROVED BY:

ADDED ALCOVE AND BLOCK VENEER	4/29/20	JCM
REVISED UNIT MIX	3/9/20	JCM

REVISIONS

**BETCO**  
 228 COMMERCE BLVD.  
 STATESVILLE, NC 28625  
 (800) 654-7813

PROJECT NAME: PUBLIC STORAGE - PS#28091  
 PROJECT ADDRESS: APOPKA, FLORIDA  
 OWNER: JANUS INTERNATIONAL  
 SHEET TITLE: FLOOR PLAN & NOTES BUILDING "1"
 PROJECT NO.: FL20016  
 DRAWING NUMBER: S2 OF 9