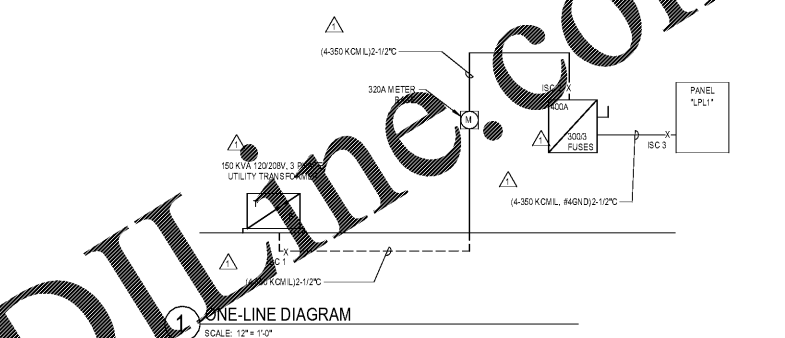


MECHANICAL / ELECTRICAL COORDINATION SCHEDULE

| EQUIPMENT | | | ELECTRICAL SYSTEM | | | | | DISCONNECT | | | | | | |
|-----------|-----------------------|-----------|-------------------|----|-------------------------|---------------|--------------|------------|---------------|-------|---------|--|--|--|
| MARK | DESCRIPTION | LOAD | V | PH | FEDER OR BRANCH CIRCUIT | PANEL CIRCUIT | FURNISHED BY | TYPE | RATING (AMPS) | ENCL. | REMARKS | | | |
| FCU-1 | INDOOR UNIT | 9.0 MCA | 208 | 1 | 2Ø12-#130/12°C | LPL-1-24 | BOBC | SS | 20 | N1 | 1 | | | |
| FCU-2 | INDOOR UNIT | 9.0 MCA | 208 | 1 | 2Ø12-#130/12°C | LPL-1-24 | BOBC | SS | 20 | N1 | 1 | | | |
| FCU-3 | INDOOR UNIT | 9.0 MCA | 208 | 1 | 2Ø12-#130/12°C | LPL-1-51.2 | BOBC | SS | 20 | N1 | 1 | | | |
| FCU-4 | INDOOR UNIT | 9.0 MCA | 208 | 1 | 2Ø12-#130/12°C | LPL-1-14.16 | BOBC | SS | 20 | N1 | 1 | | | |
| FCU-5 | INDOOR UNIT | 9.0 MCA | 208 | 1 | 2Ø12-#130/12°C | LPL-1-51.2 | BOBC | SS | 20 | N1 | 1 | | | |
| FCU-6 | INDOOR UNIT | 9.0 MCA | 208 | 1 | 2Ø12-#130/12°C | LPL-1-24 | BOBC | SS | 20 | N1 | 1 | | | |
| FCU-7 | INDOOR UNIT | 9.0 MCA | 208 | 1 | 2Ø12-#130/12°C | LPL-1-26.28 | BOBC | SS | 20 | N1 | 1 | | | |
| FCU-8 | INDOOR UNIT | 9.0 MCA | 208 | 1 | 2Ø12-#130/12°C | LPL-1-51.2 | BOBC | SS | 20 | N1 | 1 | | | |
| AF-1 | AIR FILTER | 0.075 FLA | 208 | 1 | 2Ø12-#130/12°C | LPL-1-51.2 | BOBC | SS | 20 | N1 | 1 | | | |
| AF-2 | AIR FILTER | 0.075 FLA | 208 | 1 | 2Ø12-#130/12°C | LPL-1-51.2 | BOBC | SS | 20 | N1 | 1 | | | |
| AF-3 | AIR FILTER | 0.075 FLA | 208 | 1 | 2Ø12-#130/12°C | LPL-1-51.2 | BOBC | SS | 20 | N1 | 1 | | | |
| AF-4 | AIR FILTER | 0.075 FLA | 208 | 1 | 2Ø12-#130/12°C | LPL-1-14.16 | BOBC | SS | 20 | N1 | 1 | | | |
| AF-5 | AIR FILTER | 0.075 FLA | 208 | 1 | 2Ø12-#130/12°C | LPL-1-51.2 | BOBC | SS | 20 | N1 | 1 | | | |
| AF-6 | AIR FILTER | 0.075 FLA | 208 | 1 | 2Ø12-#130/12°C | LPL-1-24 | BOBC | SS | 20 | N1 | 1 | | | |
| AF-7 | AIR FILTER | 0.075 FLA | 208 | 1 | 2Ø12-#130/12°C | LPL-1-26.28 | BOBC | SS | 20 | N1 | 1 | | | |
| AF-8 | AIR FILTER | 0.075 FLA | 208 | 1 | 2Ø12-#130/12°C | LPL-1-51.2 | BOBC | SS | 20 | N1 | 1 | | | |
| CU-1(A) | OUTDOOR UNIT | 36.3 MCA | 208 | 3 | 3ØM-#100/12°C | LPL-1-34.38 | BOBC | SS | 60 | N3R | | | | |
| CU-1(B) | OUTDOOR UNIT | 36.3 MCA | 208 | 3 | 3ØM-#100/12°C | LPL-1-42.44 | BOBC | SS | 60 | N3R | | | | |
| CU-2(A) | OUTDOOR UNIT | 66.1 MCA | 208 | 3 | 3ØM-#100/12°C | LPL-1-34.38 | BOBC | SS | 60 | N3R | | | | |
| CU-2(B) | OUTDOOR UNIT | 66.1 MCA | 208 | 3 | 3ØM-#100/12°C | LPL-1-42.44 | BOBC | SS | 60 | N3R | | | | |
| EB-1 | EXHAUST FAN | 1418 W | 120 | 1 | 2Ø12-#130/12°C | LPL-1-16 | BOBC | S | 20 | N1 | | | | |
| BWH-1 | ELECTRIC WATER HEATER | 154 KW | 120 | 1 | 2Ø12-#130/12°C | LPL-1-60 | BOBC | S | 20 | N1 | | | | |
| BWH-2 | TANKLESS WATER HEATER | 4.1 KW | 208 | 1 | 2Ø12-#130/12°C | LPL-1-51.2 | BOBC | SS | 30 | N1 | | | | |
| CP-1 | CONDENSATE PUMP | 93 W | 120 | 1 | 2Ø12-#130/12°C | LPL-1-58 | BOBC | S | 20 | N1 | | | | |
| CP-2 | CONDENSATE PUMP | 93 W | 120 | 1 | 2Ø12-#130/12°C | LPL-1-58 | BOBC | S | 20 | N1 | | | | |
| CP-3 | CONDENSATE PUMP | 93 W | 120 | 1 | 2Ø12-#130/12°C | LPL-1-58 | BOBC | S | 20 | N1 | | | | |
| CP-4 | CONDENSATE PUMP | 93 W | 120 | 1 | 2Ø12-#130/12°C | LPL-1-58 | BOBC | S | 20 | N1 | | | | |
| CP-5 | CONDENSATE PUMP | 93 W | 120 | 1 | 2Ø12-#130/12°C | LPL-1-58 | BOBC | S | 20 | N1 | | | | |
| CP-6 | CONDENSATE PUMP | 93 W | 120 | 1 | 2Ø12-#130/12°C | LPL-1-58 | BOBC | S | 20 | N1 | | | | |
| CP-7 | CONDENSATE PUMP | 93 W | 120 | 1 | 2Ø12-#130/12°C | LPL-1-58 | BOBC | S | 20 | N1 | | | | |
| CP-8 | CONDENSATE PUMP | 93 W | 120 | 1 | 2Ø12-#130/12°C | LPL-1-58 | BOBC | S | 20 | N1 | | | | |

PANEL LPL1

| DESCRIPTION | LOAD VA | REMARKS | O/C | CKT # | PH | CKT # | O/C | REMARKS | LOAD VA | DESCRIPTION |
|--------------------------------|---------|---------|-----|-------|----|-------|-----|---------|---------|-------------|
| 1 STORAGE | 1850 | | 201 | 1 | 3 | 2 | 202 | | 944 | FCU-1, AF-1 |
| 2 STORAGE | 1850 | | 201 | 3 | 3 | 4 | 202 | | 944 | FCU-2, AF-3 |
| 3 STORAGE MAIN TAINANCE | 1850 | | 201 | 7 | 3 | 8 | 202 | | 944 | FCU-3, AF-5 |
| 4 STORAGE MAIN TAINANCE | 1850 | | 201 | 9 | 3 | 10 | 202 | | 944 | FCU-4, AF-4 |
| 5 LOBBY | 360 | | 201 | 11 | 3 | 12 | 202 | | 944 | FCU-5, AF-6 |
| 6 LOBBY | 480 | | 201 | 13 | 3 | 14 | 202 | | 944 | FCU-6, AF-7 |
| 7 MAIN RESTROOM WATER | 540 | | 201 | 15 | 3 | 16 | 202 | | 944 | FCU-7, AF-8 |
| 8 RESTROOM WATER | 360 | | 201 | 17 | 3 | 18 | 202 | | 944 | FCU-8, AF-5 |
| 9 E-1 | 300 | | 201 | 19 | 3 | 20 | 202 | | 944 | |
| 10 EXTERIOR HVAC MAIN TAINANCE | 360 | | 201 | 21 | 3 | 22 | 202 | | 944 | FCU-5, AF-6 |
| 11 EXTERIOR HVAC MAIN TAINANCE | 480 | | 201 | 23 | 3 | 24 | 202 | | 944 | FCU-4, AF-7 |
| 12 BUILDING DOORS | 1850 | | 201 | 25 | 3 | 26 | 202 | | 944 | FCU-3, AF-5 |
| 13 DOOR HOLLER | 120 | | 201 | 27 | 3 | 28 | 202 | | 944 | FCU-5, AF-6 |
| 14 EMERGENCY GATE AND CONTROLS | 1850 | | 201 | 29 | 3 | 30 | 202 | | 944 | FCU-5, AF-6 |
| 15 EMERGENCY GATE AND CONTROLS | 1850 | | 201 | 31 | 3 | 32 | 202 | | 944 | |
| 16 BUILDING MOUNTED | 360 | | 201 | 33 | 3 | 34 | 202 | | 944 | FCU-5, AF-6 |
| 17 RESTROOM HAND DRYER | 2400 | | 201 | 35 | 3 | 36 | 202 | | 944 | FCU-5, AF-6 |
| 18 CU-2A | 3621 | | 803 | 37 | 3 | 38 | | | 3621 | CU-1A |
| 19 CU-2B | 3621 | | 803 | 39 | 3 | 40 | | | 3621 | CU-1B |
| 20 CU-1A | 3621 | | 803 | 41 | 3 | 42 | | | 3621 | CU-2A |
| 21 CU-1B | 3621 | | 803 | 43 | 3 | 44 | | | 3621 | CU-2B |
| 22 LAUNDRY CANNOPES | 2517 | | 47 | 3 | 48 | 201 | | | 2517 | |
| 23 SPARE | 2517 | | 49 | 3 | 49 | 201 | | | 2517 | SPARE |
| 24 SPARE | 49 | | 50 | 3 | 50 | 201 | | | 49 | SPARE |
| 25 SPARE | 51 | | 51 | 3 | 51 | 201 | | | 51 | SPARE |
| 26 SPARE | 53 | | 52 | 3 | 52 | 201 | | | 53 | SPARE |
| 27 SPARE | 55 | | 53 | 3 | 53 | 201 | | | 55 | SPARE |
| 28 SPARE | 57 | | 54 | 3 | 54 | 201 | | | 57 | SPARE |
| 29 SPARE | 59 | | 55 | 3 | 55 | 201 | | | 59 | SPARE |
| 30 SPARE | 59 | | 56 | 3 | 56 | 201 | | | 59 | SPARE |



ISC CALCULATION - 3 PHASE

POINT #1 - AT THE UTILITY TRANSFORMER

ISC RATING IS BASED ON A GENERIC TRANSFORMER. THE CONTRACTOR TO CONFIRM AVAILABLE FAULT CURRENT WITH UTILITY ENGINEER OR TO ORDERING EQUIPMENT NOTIFY ENGINEER IF DIFFERENT.

| | | |
|---|--|-------------|
| isc = 20,000 | 0.8 | 0.8 (SPARE) |
| POINT #2 - AT MAIN DISCONNECT | | |
| F = 1.732 X LENGTH X (k(PREV)) / 1800 X WIRE FACTOR X VOLTAGE | 1.732 X 12 X 15.801 / 1 X 22.736 X 208 | 0.079 |
| M = (111 F) / 1000 | (111 X 0.079) / 1000 | 0.009 |
| isc = (80 P) X M | (80 X 0.009) X 1 | 0.72 |
| isc = 14.47 | | |

POINT #3 - AT PANEL LPL1

ISC RATING IS BASED ON A GENERIC TRANSFORMER. THE CONTRACTOR TO CONFIRM AVAILABLE FAULT CURRENT WITH UTILITY ENGINEER OR TO ORDERING EQUIPMENT NOTIFY ENGINEER IF DIFFERENT.

| | | |
|---|--|-------|
| F = 1.732 X LENGTH X (k(PREV)) / 1800 X WIRE FACTOR X VOLTAGE | 1.732 X 12 X 15.801 / 1 X 18.703 X 208 | 0.079 |
| M = (111 F) / 1000 | (111 X 0.079) / 1000 | 0.009 |
| isc = (80 P) X M | (80 X 0.009) X 1 | 0.72 |
| isc = 14.47 | | |

LUMINAIRE SCHEDULE

| MARK | DESCRIPTION | MODEL | LOAD | V | PH | REMARKS | HEIGHT | TYPE |
|-------|-------------------------|----------------------------------|----------|----------|----|--|--------|--------------------|
| B | COLUMBIA LIGHTING | CH-LEDOL-K48-9 | LED 50W | 120V/277 | | #4 LINEAR 4000K LED STRIP WITH INTEGRAL MOTION SENSOR, INCLUDE WIRE GUARD. PROVIDE CAGE IF UNDER 90". MOUNT TO UNDERSIDE OF DECK OR CABLE MOUNT ON SLOPED CEILING OR WHEN DECK IS OVER 90". | 10' | CEILING |
| B2 | COLUMBIA LIGHTING | CH-LEDOL-K48-9 | LED 50W | 120V/277 | | #4 LINEAR 4000K LED STRIP, INCLUDE WIRE GUARD. PROVIDE CAGE IF UNDER 90". MOUNT TO UNDERSIDE OF DECK OR CABLE MOUNT ON SLOPED CEILING OR WHEN DECK IS OVER 90". | 10' | CEILING |
| C | METALUX LUMINA LIGHTING | RV4000-L40X-48-XX-L41-S2 | LED 57W | 120V/277 | | #4 LINEAR 4000K LED INDUSTRIAL STRIP ENCLOSED AND GAS PHOTOCELL OPTION ON MOTION SENSOR. USE ONLY WHERE INTERLOCKED WITH EXHAUST FAN. | 10' | CEILING |
| C2 | METALUX LUMINA LIGHTING | RV4000-L40X-48-XX-L41-S2-BM | LED 57W | 120V/277 | | #4 LINEAR 4000K LED INDUSTRIAL STRIP ENCLOSED AND GAS PHOTOCELL OPTION ON MOTION SENSOR WITH EMERGENCY BATTERY PACK CAPABLE OF 140 LUMENS IN EMERGENCY MODE FOR 90 MIN. PROVIDE CAGE IF UNDER 90". | 10' | CEILING |
| D | LITHONIA LIGHTING | WL4 4XL E21 LPR40N0 NESP077 | LED 40W | 120V/277 | | WALL MOUNTED, HORIZONTAL, INTEGRAL OCCUPANCY CONTROL WITH DUAL TECH-SENSE SENSOR, 4000K LED, INTERLOCKED. | 10' | WALL |
| DE | LITHONIA LIGHTING | WL4 4XL E21 LPR40N0 NESP077 EL14 | LED 40W | 120V/277 | | WALL MOUNTED, HORIZONTAL, INTEGRAL OCCUPANCY CONTROL WITH DUAL TECH-SENSE SENSOR, 4000K LED, INTERLOCKED. 30 LUMENS IN EMERGENCY BATTERY SMOKEUP CAPABLE FOR 90 MINUTES. | 10' | WALL |
| EM | BBST LIGHTING, OR EQUAL | RMR-16 LED | LED 5.2W | 120V/277 | | HIGH BAY, LED EMERGENCY LIGHT | 10' | WALL |
| F1/F2 | LITHONIA LIGHTING | LHOM LED W G HO | LED 1.2W | | | CEILING OR WALL MOUNTED LED EXIT SIGN, MOUNT TO METAL CEILING OR INDOOR SURF WITH JUNCTION BOX BEHIND METAL. ALL CEILING MOUNTED FIXTURES BELOW 90" H/F SHALL HAVE APPELTON SWIVEL PENDANT. GREEN. | 10' | CEILING OR PENDANT |
| F3 | LITHONIA LIGHTING | LHOM LED W G HO | LED 1.2W | | | WALL MOUNTED EXIT SIGN, GREEN. | 10' | WALL |
| WPE | BATON LIGHTING | GWC-AF-Q2-LED-E1-74FT | LED 113W | 120V/277 | | LED WALL PACK FULL CUTOFF SHIELDED, TYPE 4 FT DISTRIBUTION, INTERNALLY PAINTED, DARK BRONZE. | 10' | SURFACE |
| WPE | BATON LIGHTING | GWC-AF-Q2-LED-E1-74FT | LED 113W | 120V/277 | | LED WALL PACK FULL CUTOFF SHIELDED, TYPE 4 FT DISTRIBUTION, INTERNALLY PAINTED, DARK BRONZE. | 10' | SURFACE |
| L | COLUMBIA LIGHTING | LIT-34-110-1A12-E | LED 30W | 120V/277 | | 2x4 RECESSED LENS ED TROFFER, WHITE | 10' | RECESSED |

GENERAL NOTES

- SEE SPECIFICATIONS FOR ADDITIONAL REQUIREMENTS FOR LUMINAIRES, LAMPS, AND BALLASTS.
- CONTRACTOR TO VERIFY LUMINAIRE CATALOG NUMBERS AND INSTALLATION REQUIREMENTS PRIOR TO ORDERING. FOR EACH LUMINAIRE UTILIZING DOUBLE-BIODED FLUORESCENT LAMPS, PROVIDE INTEGRAL LUMINAIRE PHOTOCELL OPTION FOR ENERGY SAVING.
- QUANTITY LAMPS LISTED IN COLUMN IDENTIFIES THE TOTAL QUANTITY OF LAMPS WITHIN THE LUMINAIRE UNLESS NOTED OTHERWISE IN THE REMARKS COLUMN.

REMARKS

- REFER TO DRAWINGS FOR INSTALLATION REQUIREMENTS SUCH AS WALL MOUNT, END MOUNT, CEILING MOUNT AND PROVIDE FIXTURES ACCORDINGLY. PROVIDE DIRECTIONAL ARROWS AS SHOWN ON DRAWINGS.
- IF NOT PROVIDED BY MANUFACTURER, OCCUPANCY SENSOR.
- WALL MOUNTED FIXTURE PACKAGES MAY BE SUBMITTED. APPROVAL OF ALTERNATE LIGHTING PACKAGES SHALL BE AT THE SOLE DISCRETION OF THE OWNER.
- PROVIDE 10% SPARE EXIT SIGNS FOR INSTALLATION AT AHS DISCRETION. TO BE TURNED OVER TO OWNER AT END OF PROJECT.

Galloway
 6162 S. Willow Drive, Suite 103
 Greenwood Village, CO 80111
 303.770.8884
 GallowayUS1100

DATE: 03/20/2020
 TIME: 11:55:47 AM

Public Storage

PUBLIC STORAGE
 SEMINOLE COUNTY, FL
 PS#28091
 2431 Orange Blossom Trail
 Apopka, FL

Project No: P800991
 Drawn By: Author
 Checked By: Checker

ONE-LINE DIAGRAM AND SCHEDULES

E4.01