

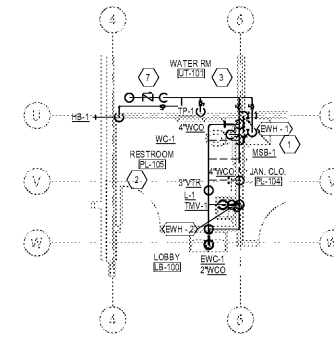
NOT FOR CONSTRUCTION

COPYRIGHT
THESE PLANS ARE AN INSTRUMENT OF SERVICE AND ARE THE PROPERTY OF GALLOWAY, AND MAY NOT BE DUPLICATED, REPRODUCED, OR REPRODUCED WITHOUT THE WRITTEN CONSENT OF GALLOWAY. COPYRIGHTS AND INFRINGEMENTS WILL BE ENFORCED AND PROSECUTED.

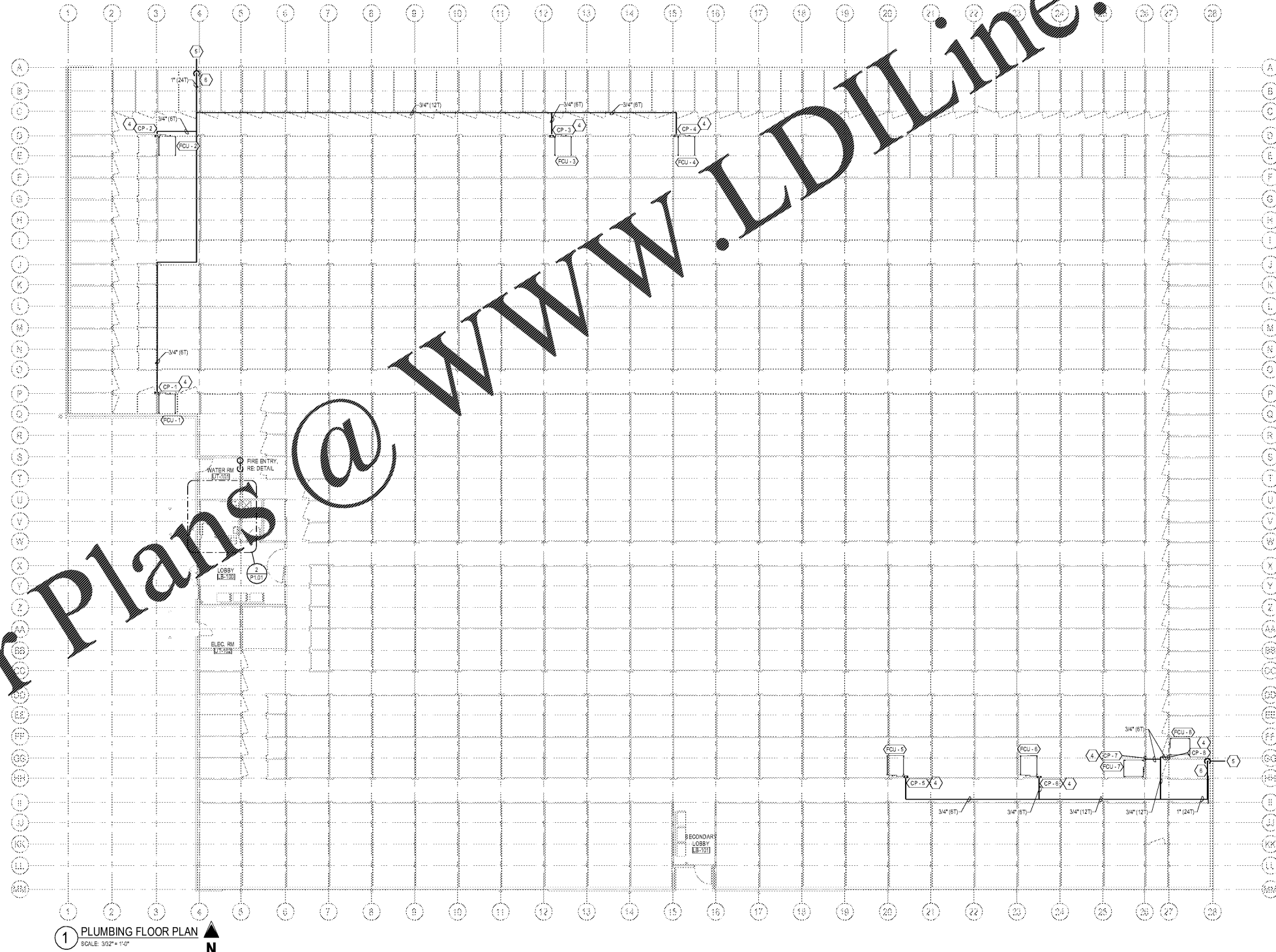
Public Storage

KEYED NOTES:

1. ROUTE WATER HEATER DRAINS (NOT SHOWN) TO DISCHARGE OVER MOP SINK BASIN.
2. REFER TO RISER DIAGRAMS FOR MORE INFORMATION ON PIPING IN THIS AREA.
3. BRANCH SHUTOFF VALVES WILL BE ACCESSIBLE IN WATER ENTRY ROOM.
4. PROVIDE CONDENSATE PUMP FOR FIN COIL UNIT CONDENSATE DRAIN DISPOSAL. LOCATE PUMP SO AS TO NOT BE IN CORRIDOR, BUT BE ACCESSIBLE FROM CORRIDOR FOR MAINTENANCE. INSTALL PUMP PER DETAILS. ROUTE CONDENSATE PUMP DISCHARGE PIPING AS HIGH AS POSSIBLE, AND ROUTE SLOPED CONDENSATE DRAIN TIGHT TO STRUCTURE TO VERTICAL DRAIN AS SHOWN. FIELD COORDINATE EXACT PIPING ROUTE.
5. CONDENSATE DRAIN PIPING, PIPE SIZES AND TOTAL COOLING TONNAGE AS SHOWN. ROUTE 1" CONDENSATE DRAIN THROUGH WALL TO DISCHARGE 6" ABOVE GRADE, IN LANDSCAPED AREA.
6. OFFSET PIPING ABOVE CEILING SO VERTICAL PIPING CAN BE IN REAR CORNER OF STORAGE UNIT. COORDINATE HING PIPING WITH JANUS PANEL INSTALLERS.
7. BUILDING WATER SHUTOFF VALVE AND SINGLE CHECK VALVE, MAIN BACKFLOW PREVENTER ON SITE, RE. CIVIL.



2 ENLARGED PLUMBING FLOOR PLAN
SCALE: 3/16" = 1'-0"



1 PLUMBING FLOOR PLAN
SCALE: 3/32" = 1'-0"

Order Plans @ www.LDILine.com

PUBLIC STORAGE
SEMINOLE COUNTY, FL

PS#28091

2431 Orange Blossom Trail
Apopka, FL

#	Date	Issue/Description
1	03/02/2020	PERMIT SUBMITTAL
	04/24/2020	SECOND SUBMITTAL

Project No: PS28091
Drawn By: PAM
Checked By: ABT

PLUMBING FLOOR PLAN

P1.01