

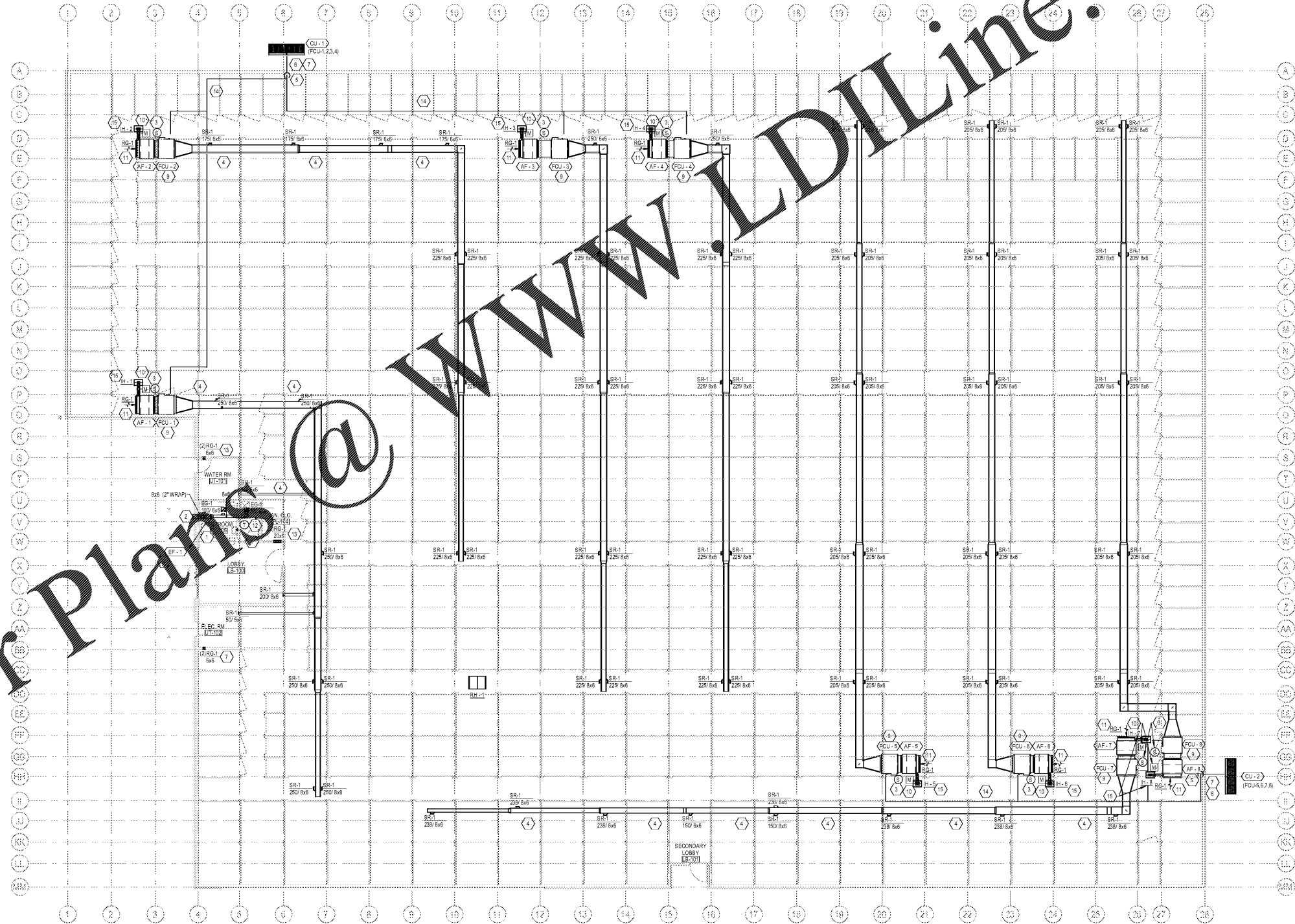
NOT FOR CONSTRUCTION

COPYRIGHT
 THESE PLANS ARE AN INSTRUMENT OF SERVICE AND ARE THE PROPERTY OF GALLOWAY, AND MAY NOT BE DUPLICATED, REPRODUCED, OR REPRODUCED WITHOUT THE WRITTEN CONSENT OF GALLOWAY. COPYRIGHTS AND INFRINGEMENTS WILL BE ENFORCED AND PROSECUTED.

Public Storage

KEYED NOTES:

1. UNDERCUT DOOR 3/4" FOR RETURN AIR / AIR RELIEF PATH.
2. TRANSITION DUCT TO 12X12 PAINT GRIP 4" DEEP AMCA 550 RATED EXTERIOR LOUVER. PROVIDE METAL WIRE LOUVER COFFER (OR EQUAL) WITH MINIMUM 4" DEEP DRAINABLE BLADES AND INSECT SCREEN INSIDE LOUVER. COORDINATE PAINT COLOR WITH ARCHITECT. MAINTAIN A MINIMUM OF 10" BETWEEN EXHAUST OUTLETS AND ANY BUILDING OPENING OR AIR INTAKE.
3. THERMOSTAT IN EACH RETURN GRILLE OF INDOOR UNIT IT SERVES. MOUNTED AT 8'-0" ABOVE FLOOR. REFER TO CONTROLS DIAGRAM FOR ADDITIONAL INFORMATION.
4. FIELD COORDINATE HORIZONTAL DUCTWORK ROUTE THROUGH STRUCTURAL BEARING WALL STUD SPACES. FIELD LOCATE AND MARK DUCTWORK ROUTES PRIOR TO START OF FRAMING TO ALLOW FRAMING TO ACCOMMODATE DUCT ROUTE.
5. OFFSET REFRIGERANT PIPING ABOVE CEILING SO VERTICAL PIPING CAN BE IN REAR CORNER OF STORAGE UNIT. COORDINATE PIPING WITH ANALOG PIPING INSTALLATIONS.
6. ROUTE REFRIGERANT ACROSS GROUND TO BUILDING PENETRATION. SUPPORT PIPING AS SHOWN IN DETAIL. PROVIDE ALUMINUM JACKETING TO PROTECT INSULATION.
7. PROVIDE WEATHERPROOF WALL PENETRATION AIR EXITS OR APPROVED EQUIVALENT.
8. EQUIPMENT SHALL BE LOCATED ABOVE CEILING. PROVIDE ACCESS FOR SERVICE ACCESS.
9. MOUNT AIR HANDLER AS HIGH IN SPACE AS POSSIBLE. FIELD COORDINATE EXHAUST LOCATION WITH STRUCTURE, PIPING AND ALL OTHER TRADES. INSTALL AIR HANDLER AS HIGH AS POSSIBLE TO MAINTAIN CLEARANCES AS REQUIRED BY MANUFACTURER. PROVIDE AIR HANDLER ACCESS TO SERVICE FROM CORRIDOR.
10. MOTORIZED DAMPER FOR OUTDOOR AIR INTAKE SHALL BE CONTROLLED BY EXTERIOR UNIT LOW VOLTAGE CIRCUIT. BALANCE TO OUTDOOR AIR INTAKE. EXTERIOR DAMPER SHALL BE INSTALLED SO AS TO BE ACCESSIBLE FROM HALLWAY FOR MAINTENANCE ACCESS. DETAIL FOR TERMINATION.
11. PROVIDE RETURN AIR FILTER OVER EACH RETURN AIR UNIT. TYPICAL RETURN GRILLE SHALL BE FULL SIZE OF FILTER. FILTER CONNECTION SHALL BE TO RETURN GRILLE DAMPER TO INDUCE OUTDOOR AIR PER SCHEDULE.
12. LOCATION OF EQUIPMENT TO BE MANAGER CENTRALIZED CONTROLLER. COORDINATE INSTALLATION LOCATION WITH OWNER.



Order Plans @ www.LDLine.com

1 MECHANICAL PLAN
 SCALE: 3/32" = 1'-0"
 N

PUBLIC STORAGE
 SEMINOLE COUNTY, FL

PS#28091

2431 Orange Blossom Trail
 Apopka, FL

#	Date	Issue/Description
1	04/24/2020	PERMIT SUBMITTAL
	04/24/2020	SECOND SUBMITTAL

Project No: PS28091
 Drawn By: PAM
 Checked By: ABT

MECHANICAL PLAN

M1.01