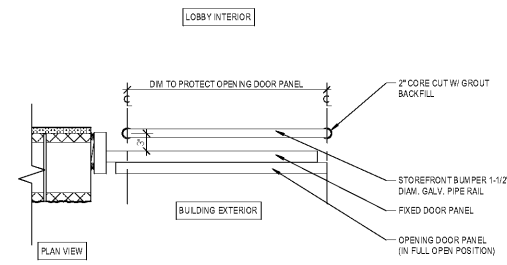


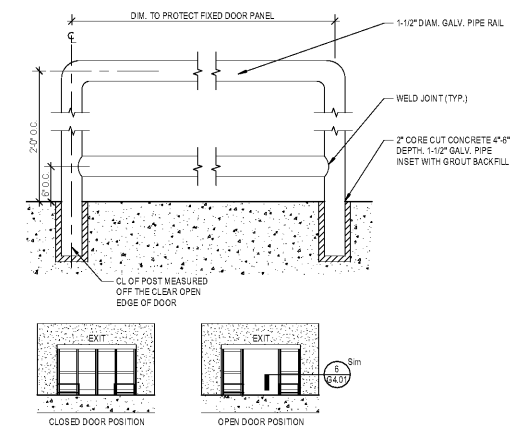
**NOT FOR CONSTRUCTION**

**COPYRIGHT**  
THESE PLANS ARE AN INSTRUMENT OF SERVICE AND ARE THE PROPERTY OF GALLOWAY, AND MAY NOT BE DUPLICATED, REPRODUCED, OR REPRODUCED WITHOUT THE WRITTEN CONSENT OF GALLOWAY. COPYRIGHTS AND INFRINGEMENTS WILL BE ENFORCED AND PROSECUTED.

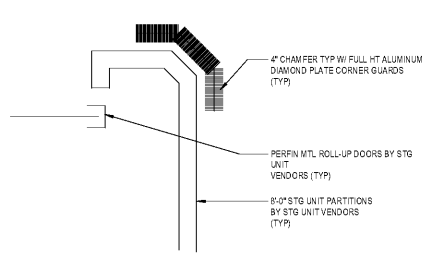
**Public Storage**



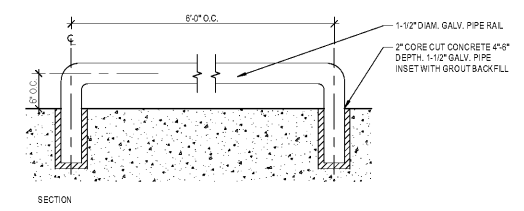
**6 STOREFRONT DOOR BUMPER RAIL PLAN DETAIL**  
SCALE: NTS



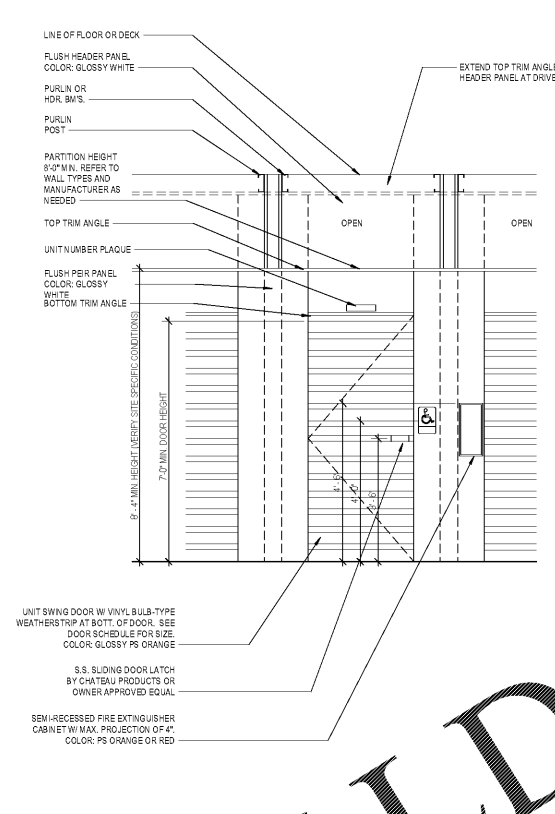
**3 STOREFRONT DOOR BUMPER RAIL SECTION**  
SCALE: NTS



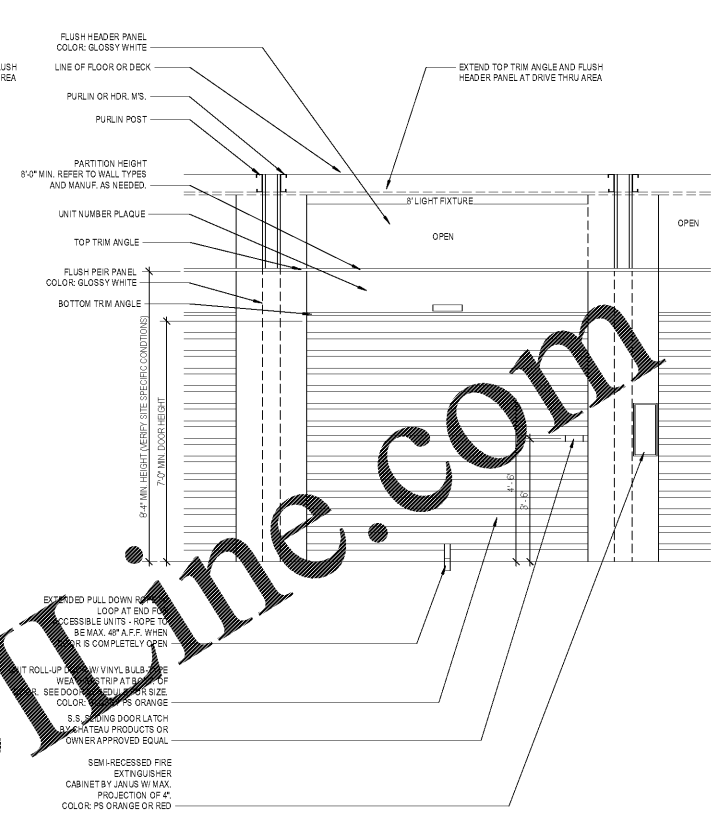
**7 DETAIL OF 4\"/>**



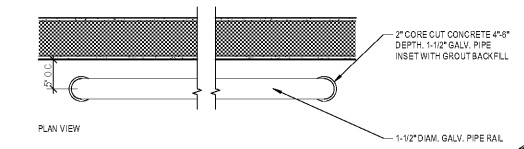
**4 CART STORAGE RAIL DETAIL**  
SCALE: NTS



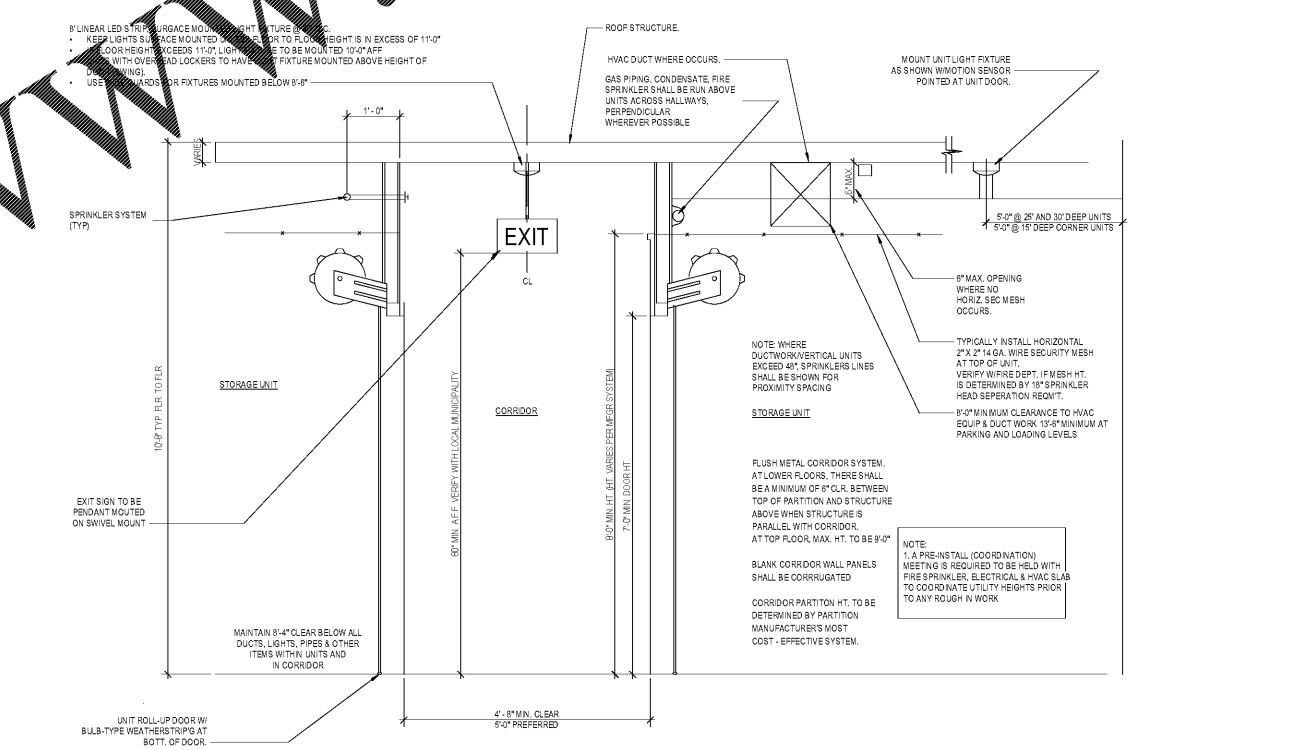
**1 UNIT DETAIL ELEVATION**  
SCALE: 1/2" = 1'-0"



**2 UNIT CORRIDOR SECTION**  
SCALE: 3/4" = 1'-0"



**5 SECURITY MESH OVER HALLWAY SYSTEM**  
SCALE: 3/4" = 1'-0"



**3 UNIT CORRIDOR SECTION**  
SCALE: 1/2" = 1'-0"

**Order Plans @**

**WWW.LDINLINE.COM**

**PUBLIC STORAGE**  
SEMINOLE COUNTY, FL  
PS#28091  
2431 S. Orange Blossom Trail  
Apopka, FL

#	Date	Issue/Description
1	03/02/2020	PERMIT SUBMITTAL
1	04/24/2020	2ND PERMIT SUBMITTAL

Project No: PS000991  
Drawn By: AT  
Checked By: KKS

STANDARD INTERIOR ELEVATIONS & SECTIONS

**G4.01**