

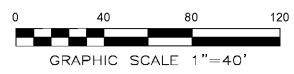
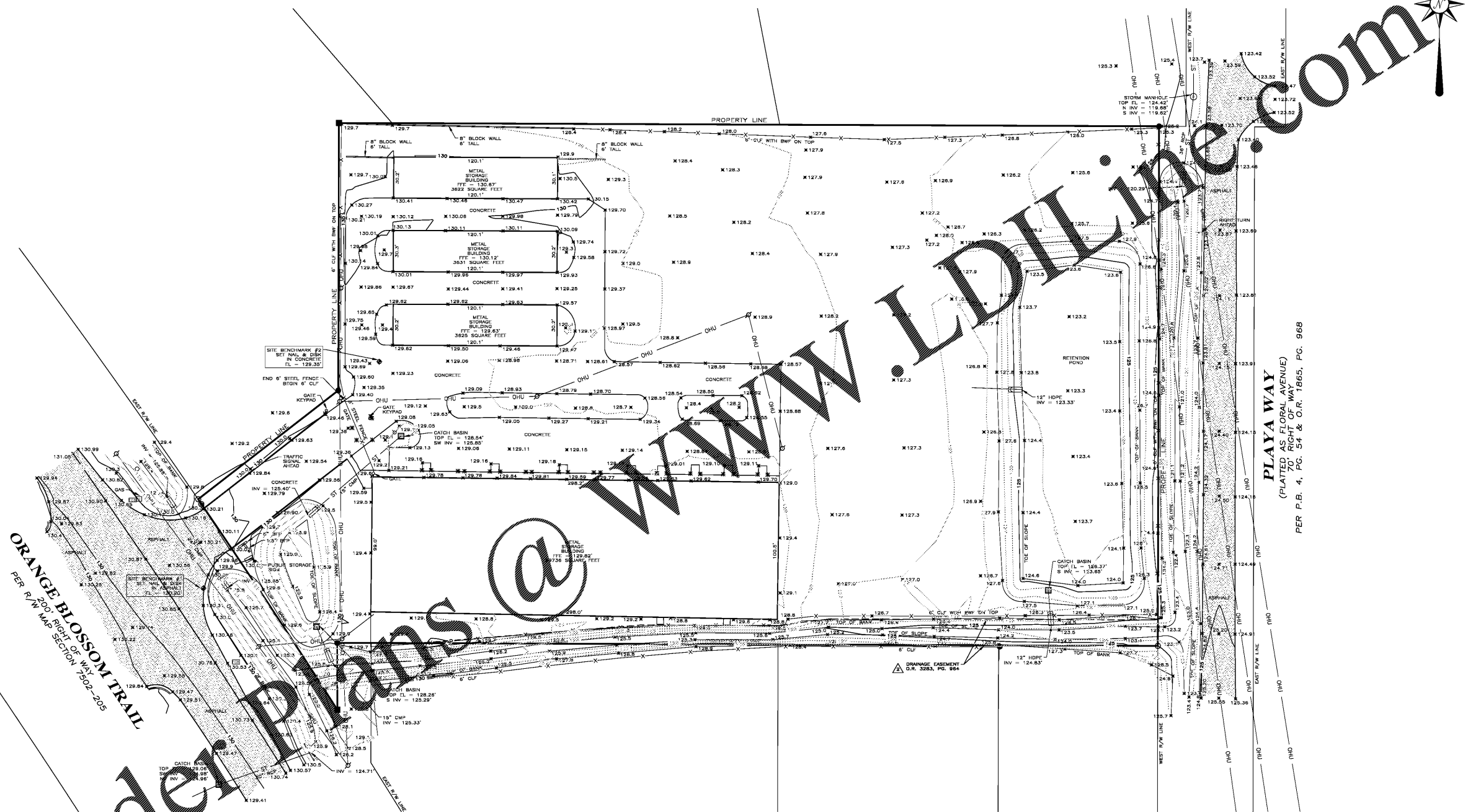
ALTA/NSPS LAND TITLE SURVEY OF APOPKA PUBLIC STORAGE

LOCATED IN SECTION 19, TOWNSHIP 21 SOUTH, RANGE 29 EAST
SEMINOLE COUNTY, FLORIDA



ORANGE BLOSSOM TRAIL
PER P.W. MAP SECTION 7502-205

OrderPlans.com



SEE SHEET 1 OF 2 FOR COMPLETE BOUNDARY DETAILS.

LEGEND	
■	FOUND CONCRETE MONUMENT
●	FOUND IRON ROD & CAP
○	FOUND IRON PIPE
○	SET 5/8" IRON ROD & CAP "LB 6845"
⊕	SITE BENCHMARK
⊠	CATCH BASIN
⊡	STORM MANHOLE
⊞	MITERED END SECTION
⊞	BACKFLOW PREVENTER
⊞	FIRE HYDRANT
⊞	WOOD POWER POLE
⊞	TRAFFIC SIGNAL POLE
⊞	TRAFFIC SIGNAL BOX
⊞	UTILITY MARKER
⊞	BOLLARD
⊞	SIGN
⊞	MONUMENT SIGN
●	SPOT ELEVATION - HARD SURFACE
○	SPOT ELEVATION - GROUND SHOT
△	TITLE COMMITMENT EXCEPTION NUMBER
—ST—	STORM SEWER LINE
—X—	FENCE LINE
—OHU—	OVERHEAD UTILITY LINE
P.O.B.	POINT OF BEGINNING
CONC. MON.	CONCRETE MONUMENT
O.R.	OFFICIAL RECORDS BOOK
P.B.	PLAT BOOK
P.G.	PAGE
R/W	RIGHT OF WAY
(M)	MEASURED
(C)	CALCULATED
(D)	PER DEED
PSM	PROFESSIONAL SURVEYOR & MAPPER
LB	LICENSED BUSINESS
RCP	REINFORCED CONCRETE PIPE
INV	INVERT
EL	ELEVATION
BFP	BACKFLOW PREVENTER
CMP	CORRUGATED METAL PIPE
RCP	REINFORCED CONCRETE PIPE
HDP	HIGH DENSITY POLYETHYLENE
FFE	FINISHED FLOOR ELEVATION
CLF	CHAIN LINK FENCE
—	PROPERTY BOUNDARY LINE

NOT VALID WITHOUT THE SIGNATURE AND THE ORIGINAL RAISED SEAL OF A FLORIDA LICENSED SURVEYOR AND MAPPER (SEE SHEET 1 OF 2)

REVISIONS:

JUNE 19, 2019	FOR SURVEY ADDITIONS AND NOTES
JULY 2, 2019	UPGRADE TO ALTA STANDARDS
SEPTEMBER 16, 2019	FOR CERTIFICATION AND DATE.
OCTOBER 15, 2019	FOR CERTIFICATION, DATE, ANNOTATION AND NOTES.
OCTOBER 16, 2019	FOR ADDITION OF NOTE 14.
APRIL 23, 2020	FOR ADDITIONAL NOTES.

DATE OF DRAWING: 17 JUN 2019
 MANAGER: MAB
 CADD: EAC
 PROJECT NUMBER: 204-19053
 COMPUTER FILE: 204053BT.DWG
 LAST FIELD WORK: 07 JUN 2019
 CREW CHIEF(S): RWE
 SCALE: 1" = 40' SHEET 2 OF 2

ALTA/NSPS LAND TITLE SURVEY
 OF
 APOPKA PUBLIC STORAGE
 2431 SOUTH ORANGE BLOSSOM TRAIL
 APOPKA, FLORIDA 32703
 SECTION 19, TOWNSHIP 21 SOUTH, RANGE 29 EAST
 SEMINOLE COUNTY, FLORIDA
 FOR
KIMLEY-HORN

LEADING EDGE
 LAND SERVICES
 INCORPORATED
 8802 EXCHANGE DRIVE
 ORLANDO, FLORIDA 32809
 PHONE: (407) 351-6730
 FAX: (407) 351-9891
 WEB: www.leadingedgeinc.com
 FLORIDA LICENSED BUSINESS NUMBER LB 6646