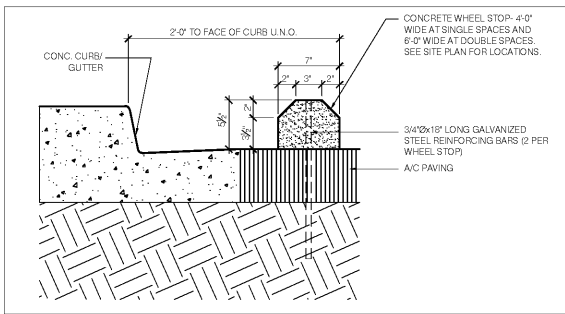
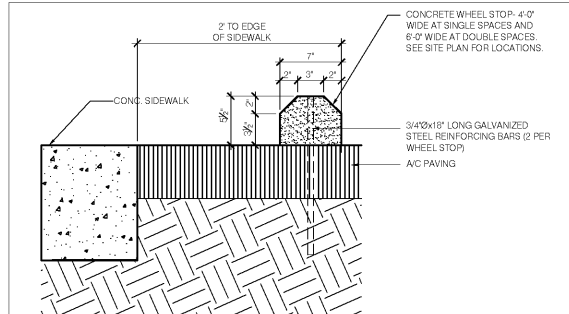


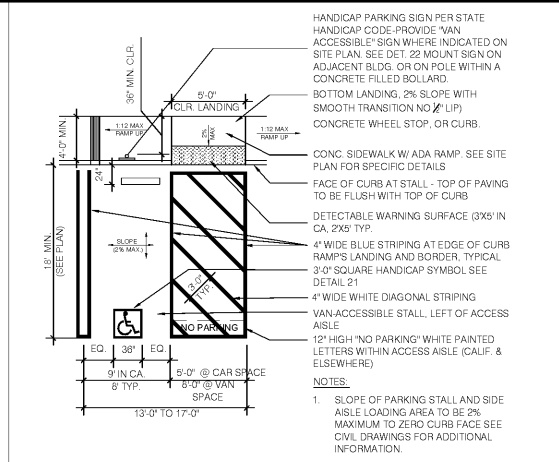
Plotted By Anderson, Sr. on 11/11/2020 06:28:47 PM. K:\VRB\_LDEVA\147654001 - Public Storage - Seminole County\CAD\PlanSheets\C-600 PUBLIC STORAGE DETAILS - 147654001.dwg  
 This document, together with the concepts and designs presented herein, is intended only for the specific purpose and client for which it was prepared. Reuse of and/or modification of this document without written authorization and adaptation by Kimley-Horn and Associates, Inc. shall be without liability to Kimley-Horn and Associates, Inc.



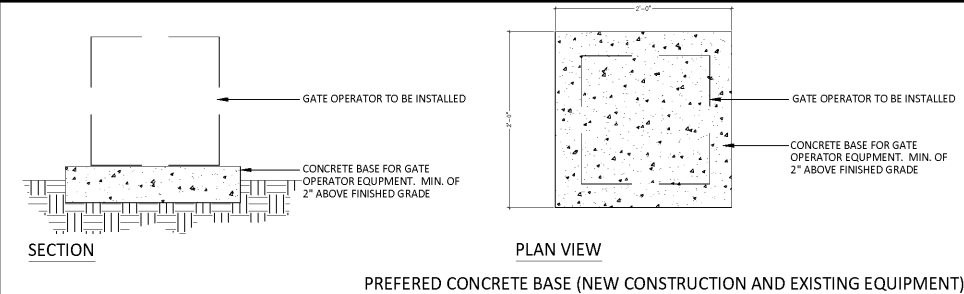
CURB & GUTTER SECTION



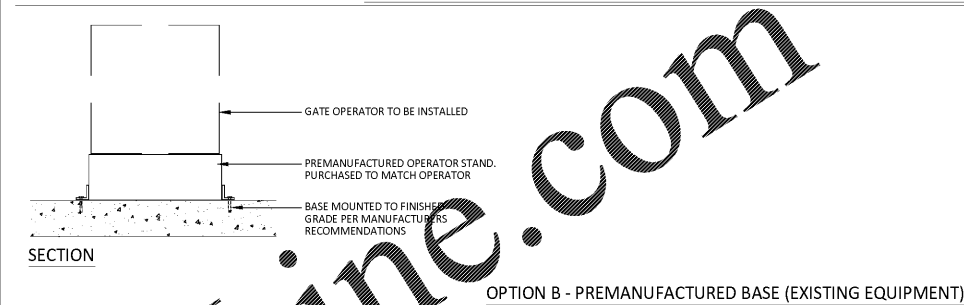
SIDEWALK SECTION



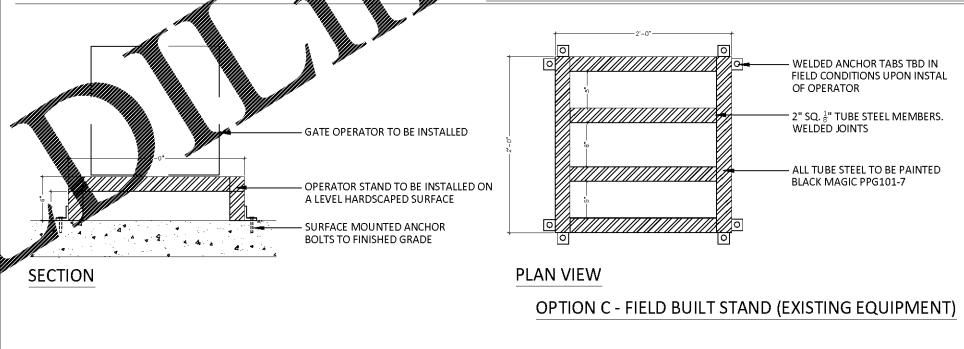
ADA PARKING SPACE PLAN



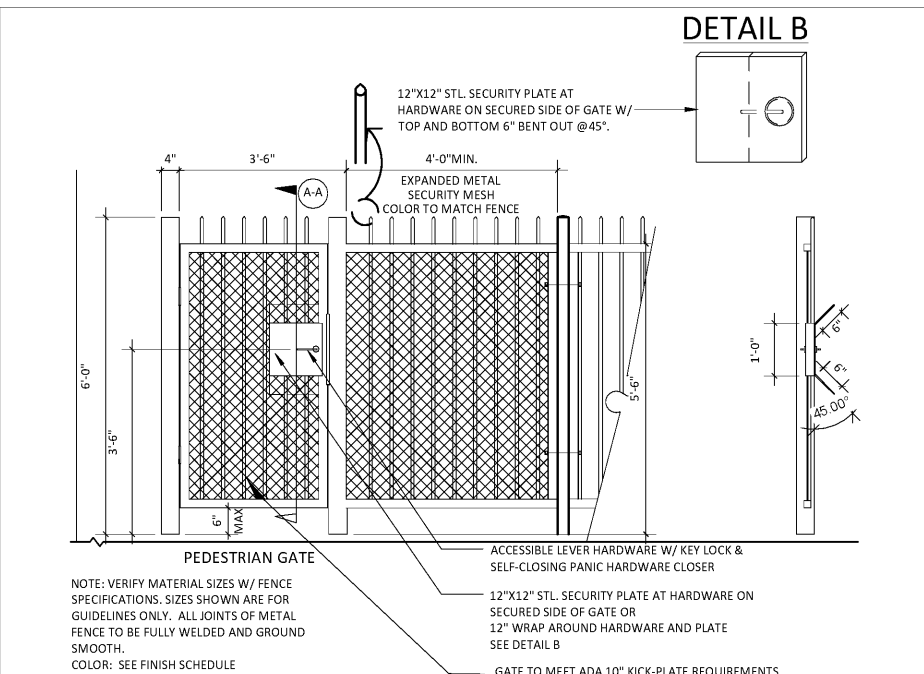
PREFERRED CONCRETE BASE (NEW CONSTRUCTION AND EXISTING EQUIPMENT)



OPTION B - PREMANUFACTURED BASE (EXISTING EQUIPMENT)



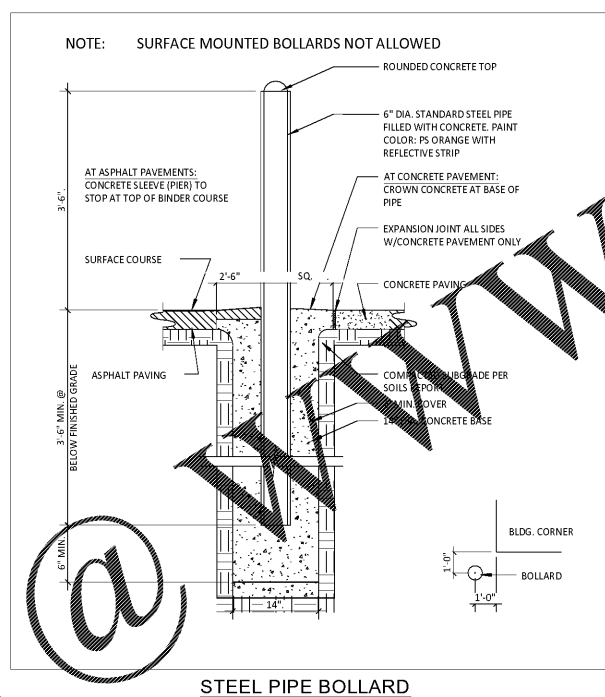
GATE OPERATOR STAND OPTIONS



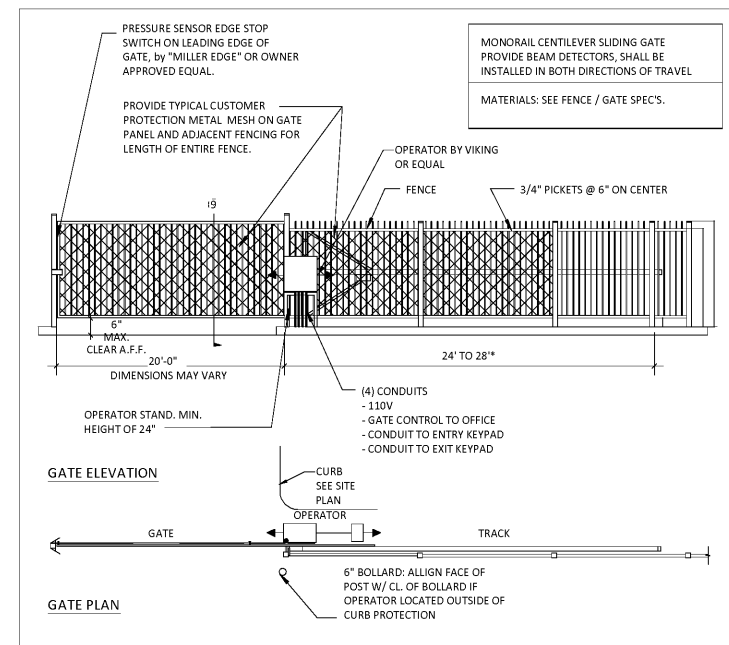
TYP. FENCE

SECTION A-A

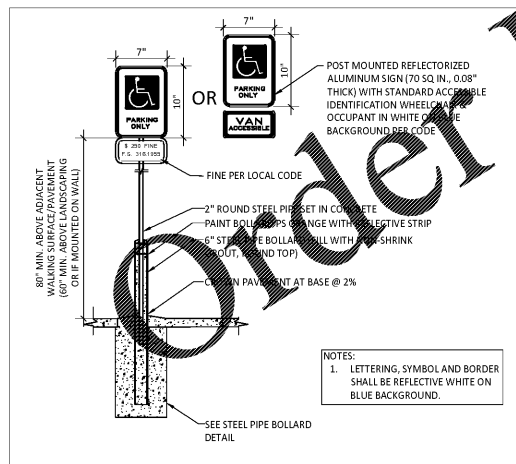
TUBE STEEL FENCE MAN GATE



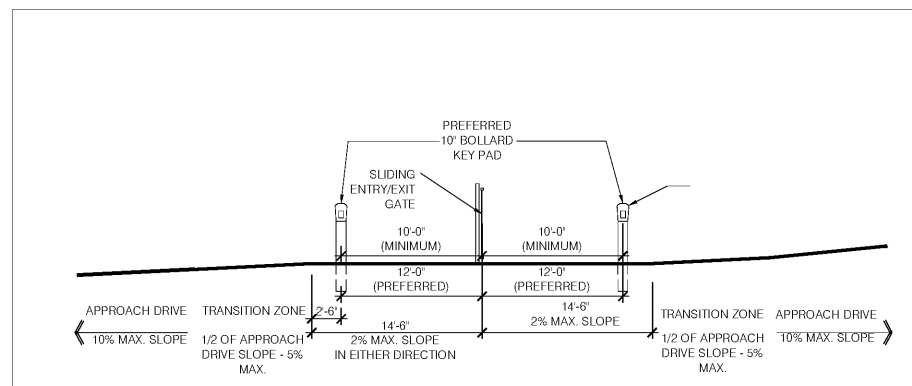
STEEL PIPE BOLLARD



VEHICLE CANTILEVER SLIDING GATE & TUBE STEEL FENCE



PIPE MOUNTED ACCESSIBLE SIGN DETAIL



VEHICLE GATE AND DRIVEWAY SECTION

KIMLEY-HORN		DATE	BY
© 2020 KIMLEY-HORN AND ASSOCIATES, INC. 445 24TH STREET, SUITE 200, VERO BEACH, FL 32960 PHONE: 772-794-1100 WWW.KIMLEY-HORN.COM CA 00000696		REV'S/ONS	DATE
PROFESSIONAL	CHRISTOPHER J. HOLLEN, P.E.	NO.	
FLORIDA LICENSE NUMBER	74685		
SCALE	AS SHOWN		
DESIGNED BY	DFD		
DRAWN BY	DFD		
CHECKED BY	COJH		
K/A PROJECT	147654001		
DATE	10/22/19		
SCALE	AS SHOWN		
DESIGNED BY	DFD		
DRAWN BY	DFD		
CHECKED BY	COJH		
PUBLIC STORAGE APOPKA		FLORIDA	
2431 S. ORANGE BLOSSOM TRAIL		SEMINOLE COUNTY	
SHEET NUMBER		C-600	

