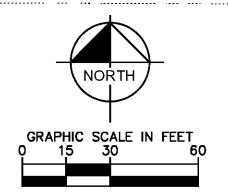


Plotted By: Anderson, Sarah - Sheet Set: 147654001 - Seminole Public Storage - Layout: C-300 UTILITY PLAN - June 11, 2020 06:51:40pm - K:\VIB\DEVA\147654001 - Public Storage - Seminole County\CAD\PlanSheets\C-300 UTILITY PLAN - 147654001.dwg  
 This document, together with the concepts and designs presented herein, is intended only for the specific purpose and client for which it was prepared. Reuse of any part of this document without written authorization and consent of Kimley-Horn and Associates, Inc. shall be without liability to Kimley-Horn and Associates, Inc.

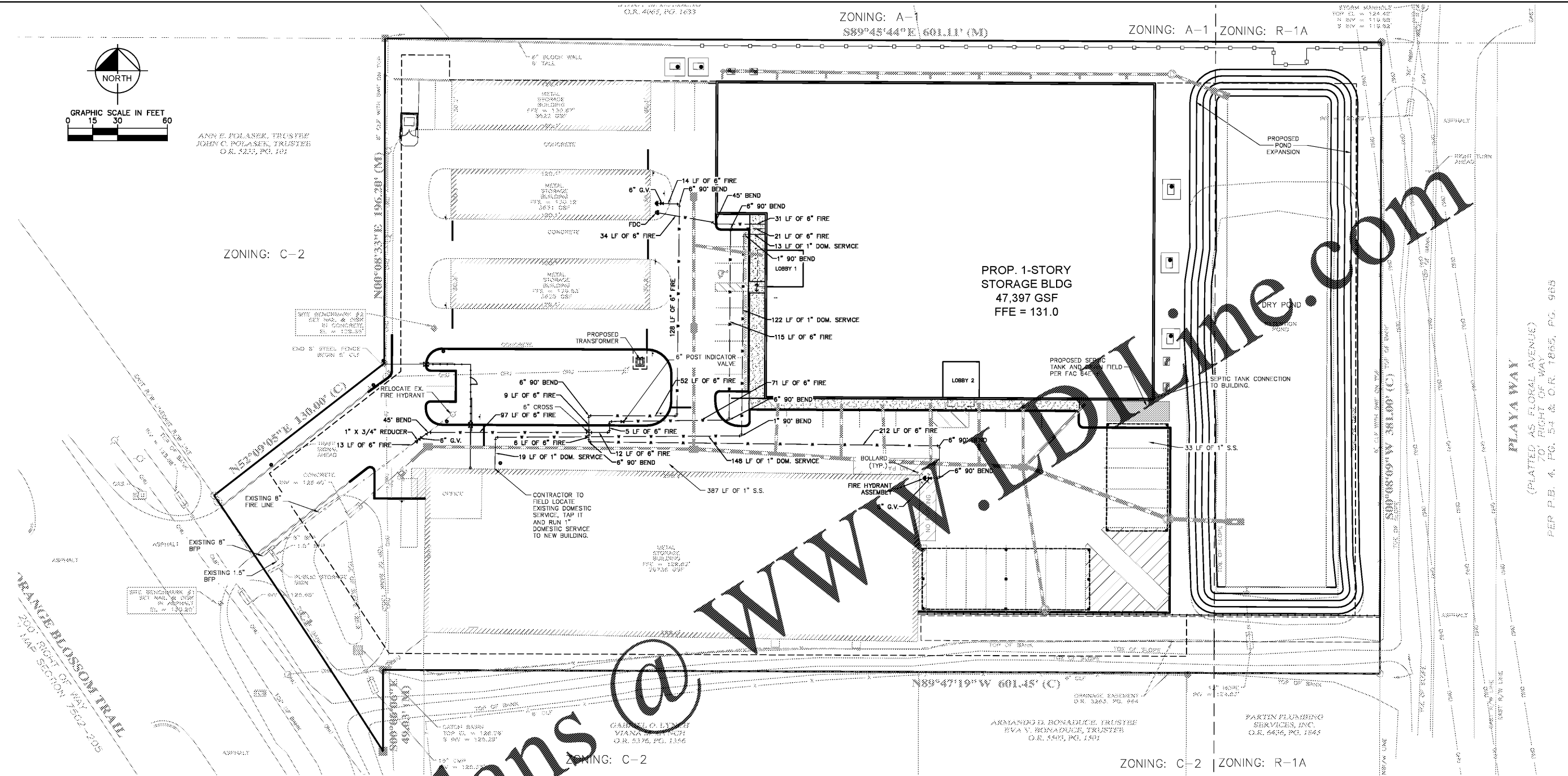


ANN E. POLASEK, TRUSTEE  
 JOHN C. POLASEK, TRUSTEE  
 O.R. 5215, PG. 102

ZONING: A-1  
 889°45'44"E 601.11' (M)  
 ZONING: A-1 ZONING: R-1A

ZONING: C-2

PROP. 1-STORY  
 STORAGE BLDG  
 47,397 GSF  
 FFE = 131.0



Order Plans @

WWW.KIMLEY-HORN.COM

NOTES

- CONTRACTOR TO CONSTRUCT DRAINAGE STRUCTURES WITH USF GRATES, RIMS AND COVERS AS CALLED OUT OR APPROVED EQUAL SHOP DRAWINGS ARE TO BE PROVIDED TO ENGINEER FOR APPROVAL PRIOR TO ANY CONSTRUCTION.
- CONTRACTOR TO REFER TO FOOT DESIGN STANDARD (AND NOT LIMITED TO) INDEX'S 200, 201, 210, 211, 214, 222 & 233 FOR MANHOLE, INLET AND GRATE SPECIFICATIONS.
- ALL DRAINAGE STRUCTURES SHALL BE CONSTRUCTED WITH (4) SIEVE BEARING HEAVY DUTY H-30 RATED TRAFFIC RIMS AND GRATES.
- CONTRACTOR TO VERIFY ALL EXISTING UTILITY RINGS AND COVERS ON SITE ARE HEAVY DUTY TRAFFIC RATED. CONTRACTOR TO REPLACE DEFICIENT RINGS AND COVERS WITH HEAVY DUTY TRAFFIC RATED RINGS AND COVERS. CONTRACTOR TO ADJUST RIM ELEVATIONS TO MATCH PROPOSED FINISHED GRADE OF ANY EXISTING UTILITIES TO REMAIN THAT CHANGE IN ELEVATION DURING CONSTRUCTION.
- ALL CLEANOUT COVERS SHOULD BE RATED FOR HEAVY DUTY TRAFFIC.
- ALL EXISTING PAVEMENT AND CONCRETE TO BE JOINED SHALL BE SAWCUT.
- SIDEWALKS AND CROSWSWALKS SHALL NOT EXCEED 2% CROSS SLOPE NOR 5% LONGITUDINALLY. GRADES IN ACCESSIBLE PARKING SPACES SHALL NOT EXCEED 2% IN ANY DIRECTION. IN CASES OF SIDEWALK AT BUILDING ENTRANCES, GRADES SHALL NOT EXCEED 2% IN ANY DIRECTION. ACCESSIBLE CURB RAMP SHALL NOT EXCEED 6' IN LENGTH, 6" RISE, AND 1:12 SLOPE. LANDINGS ASSOCIATED WITH RAMP AND AT CHANGES IN DIRECTION SHALL BE MINIMUM 60" WIDE AND SHALL NOT EXCEED 2% SLOPE IN ANY DIRECTION. MINIMUM GRADE ON SIDEWALKS IN THE FIRST TEN (10) FEET ADJACENT TO BUILDINGS SHALL BE 1.5% MINIMUM.
- SPOT ELEVATIONS ARE AT FACE OF CURB AND EDGE OF PAVEMENT UNLESS OTHERWISE NOTED.
- EXISTING GRADES AND DRAINAGE HAVE BEEN TAKEN FROM A SURVEY PREPARED BY LEADING EDGE LAND SERVICES, INC., DATED JUNE 17, 2019. THE ELEVATIONS SHOWN HEREON ARE BASED ON THE NORTH AMERICAN VERTICAL DATUM (NAVD) OF 1988. ORANGE COUNTY BENCHMARK NUMBER L991045, A 2-1/2" ORANGE COUNTY CONTROL DISK IN CENTERLINE OF HEADWALL 30 FEET EAST OF OVERLAND ROAD, 120 FEET WEST OF CENTERLINE OF ORANGE BLOSSOM TRAIL PUBLISHED ELEVATION 129.270 FEET. SITE BENCHMARKS ARE AS SHOWN.
- HOPE STORM PIPE CONTRACTOR IS RESPONSIBLE FOR OBTAINING THE STORM DRAINAGE PIPE INSTALLATION MANUAL AND SPECIFICATIONS AND COMPLYING WITH ALL MANUFACTURER'S INSTALLATION PROCEDURES AND REQUIREMENTS. TESTING OF BACKFILL MATERIAL AND COMPACTION OF BACKFILL MATERIAL IS THE CONTRACTOR'S RESPONSIBILITY.
- ALL DRAINAGE PIPE JOINTS SHALL BE FILTER FABRIC WRAPPED PER FOOT INDEX #280. ALL DRAINAGE PIPE JOINTS NEED TO BE FILTER FABRIC WRAPPED REGARDLESS OF MATERIAL.
- EXISTING STORM MAINS AND PIPES ON PROPERTY TO BE JETTED AND CLEANED PRIOR TO ENGINEER'S ACCEPTANCE OF SYSTEM.
- CONTRACTOR SHALL COORDINATE PAVING IMPROVEMENTS TO AVOID TIRE MARKS FROM CONSTRUCTION ACTIVITY. FINAL PAVING SHALL BE AS SMOOTH AS POSSIBLE AND FREE FROM ANY MARKS, SCRAPS, GOUGES, TIRE MARKS, ETC. CAUSED DURING CONSTRUCTION ACTIVITY.
- CONTRACTOR TO ENSURE POSITIVE RUNOFF FROM THE BUILDING. PAVING SHALL BE FREE OF FONDING AND MAINTAIN POSITIVE OUTFALL TO THE DRAINAGE SYSTEM. CONTRACTOR SHALL FIELD VERIFY EXISTING DRAINAGE PATTERNS AND TIE-IN GRADES AND ALERT OWNER AND ENGINEER SHOULD ANY CONFLICTS ARISE.
- DURING CONSTRUCTION AND AFTER FINAL GRADING, NO SURFACE WATER RUNOFF MAY BE DIRECTED TO ADJACENT PROPERTIES, AND ALL SURFACE WATER RUNOFF MUST BE ROUTED TO APPROVED DRAINAGE FACILITIES OR BE RETAINED ON SITE. ALL RUNOFF FROM THE SITE, BOTH DURING AND AFTER CONSTRUCTION, MUST BE FREE OF POLLUTANTS, INCLUDING SEDIMENT, PRIOR TO DISCHARGE.
- ALL SLOPES STEEPER THAN 6:1 SHALL BE SCADED.
- ALL SIDEWALKS BEHIND AND ADJACENT TO LANDSCAPE ISLANDS WILL BE SLOPED TO PREVENT STANDING WATER ALONG THE LANDSCAPE ISLAND.
- STORM PIPE ON THIS PLAN LABELED "SD" MAY BE RCP OR HDPE. SHOP DRAWINGS OF PIPE ARE TO BE PROVIDED TO ENGINEER FOR APPROVAL PRIOR TO ORDERING OR CONSTRUCTION.
- CONTRACTOR TO REFER TO THE ARCHITECTURAL PLANS FOR BUILDING EXTERIOR WALL AND SOILING MATERIAL TO DETERMINE THE GRADING FROM BUILDING FFE FOUNDATION AND IF AN INSPECTION STRIP IS REQUIRED.
  - SLAB WITHOUT COVERING = 0 INCHES
  - WOOD SIDING = 6 INCHES ABOVE GRADE OR 2 INCHES
  - STUCCO = CMU WITH TRUE STUCCO FINISH 5/8 INCH THICK
  - STUCCO (ADJACENT TO CONCRETE OR PAVED AREA) = 2 INCHES
  - LESS THAN 5/8 INCH THICK STUCCO (CEMENTITIOUS COATING) DOES NOT REQUIRE AN INSPECTION STRIP.
  - WOOD FRAME STUCCO = 6 INCHES ABOVE GRADE OR 4 INCHES
  - WOOD SIDING = 6 INCHES ABOVE GRADE OR 2 INCHES
  - WOOD FRAME = 6 INCHES ABOVE GRADE AND 4 INCHES
  - \* FOR ALL OTHER SURFACES, CONTRACTOR TO CONTACT BUILDING DEPARTMENT AND MANUFACTURER
- SEE SHEET C-019 FOR GRADING CROSS SECTIONS.

LEGEND

- PROPERTY LINE
- LANDSCAPE BUFFER
- STANDARD CONCRETE
- PROPOSED BUILDING
- EXISTING BUILDING
- PROPOSED WATER PIPE
- PROPOSED SEWER PIPE
- PROPOSED STORM PIPE
- STORM WATER CATCH BASIN
- TRANSFORMER



<p><b>Kimley»Horn</b>                  © 2020 KIMLEY-HORN AND ASSOCIATES, INC.                  445 24TH STREET, SUITE 200, VERO BEACH, FL 32960                  PH-ONE: 772-794-4100                  WWW.KIMLEY-HORN.COM CA 00000686</p>	
<p>PROFESSIONAL                  LICENSED PROFESSIONAL                  CHRISTOPHER J. HOLLEN, P.E.                  FLORIDA LICENSE NUMBER                  74685</p>	<p>DATE: 10/22/19                  SCALE: AS SHOWN                  DESIGNED BY: DFD                  DRAWN BY: DFD                  CHECKED BY: C-JH</p>
<p><b>UTILITY PLAN</b></p>	
<p><b>PUBLIC STORAGE APOPKA</b>                  2431 S. ORANGE BLOSSOM TRAIL                  SEMINOLE COUNTY, FLORIDA</p>	
<p>SHEET NUMBER  <b>C-300</b></p>	