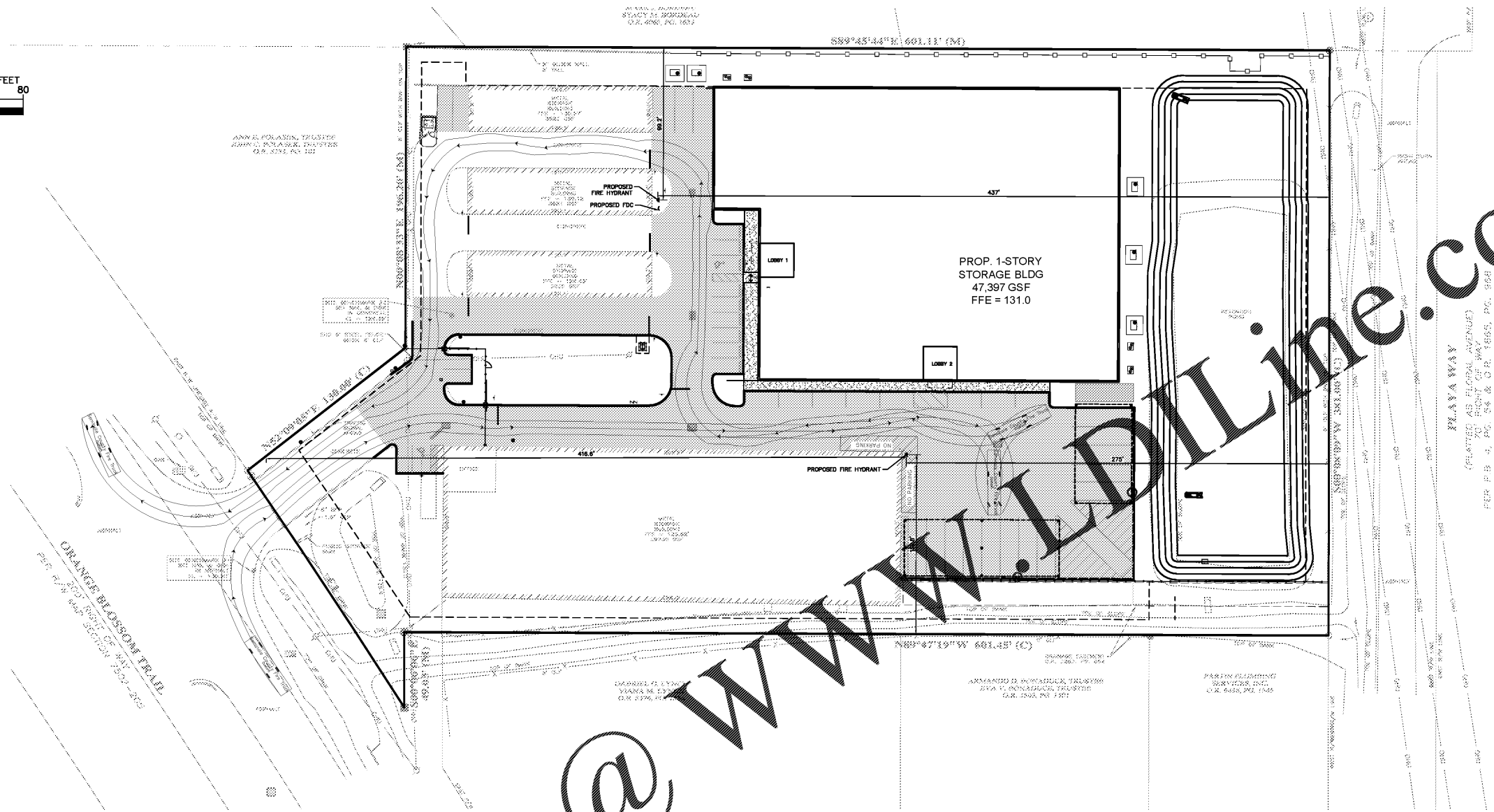
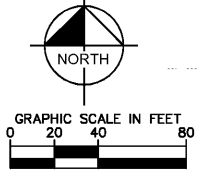


Plotted By: Anderson, Sarah - Sheet Set: 147654001 - Seminole Public Storage - Layout: C-110 FIRE TRUCK TURN EXHIBIT - 147654001 - June 11, 2020 06:28:11pm - C:\VRB_LDEV\147654001 - Public Storage - Seminole County\CAD\PlanSheets\C-110 TRUCK TURN EXHIBIT - 147654001.dwg
 This document, together with the concepts and designs presented herein, is an instrument of service, is intended only for the specific purpose and client for which it was prepared. Reuse of and improper reliance on this document without written authorization and completion by Kimley-Horn and Associates, Inc. shall be without liability to Kimley-Horn and Associates, Inc.



Order Plans @ WWW.LDILLINE.COM

Public Storage - Seminole County Needed Fire Flow (NFF)	
per NFPA 1 and 101 Uniform Fire Code Handbook, Chapter 18, 2015 Edition	
Building Fire Area (SF) =	47,397
Building Type (per NFPA 220) =	II-B (600)
Associated Min. Required Fire Flow (GPM) =	4,500
<small>(per Table 14.5.1 of the NFPA Uniform Fire Code Handbook)</small>	
Fire Sprinkler - Yes or No =	Yes
<small>(75% reduction with approved automatic fire sprinkler credit (per Chapter 18.4.5.2.1 of the NFPA))</small>	
Flow Duration (Hrs)	4
Minimum Fire Flow Required (per NFPA, GPM) =	1,125
Fire Flow Provided (GPM) =	1,125



PUBLIC STORAGE APOPKA 2431 S. ORANGE BLOSSOM TRAIL SEMINOLE COUNTY FLORIDA	KHA PROJECT 147654001 DATE 10/22/19 SCALE AS SHOWN DESIGNED BY DFD DRAWN BY DFD CHECKED BY C-JH	LICENSED PROFESSIONAL CHRISTOPHER J. HOLLEN, P.E. FLORIDA LICENSE NUMBER 74685	Kimley»Horn © 2020 KIMLEY-HORN AND ASSOCIATES, INC. 445 24TH STREET, SUITE 2000, VERO BEACH, FL 32960 PH: 772-794-4100 WWW.KIMLEY-HORN.COM CA 0000686
		REVISIONS No. _____ BY _____ DATE _____	
SHEET NUMBER C-110			