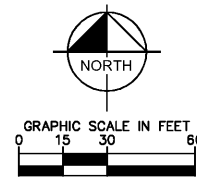
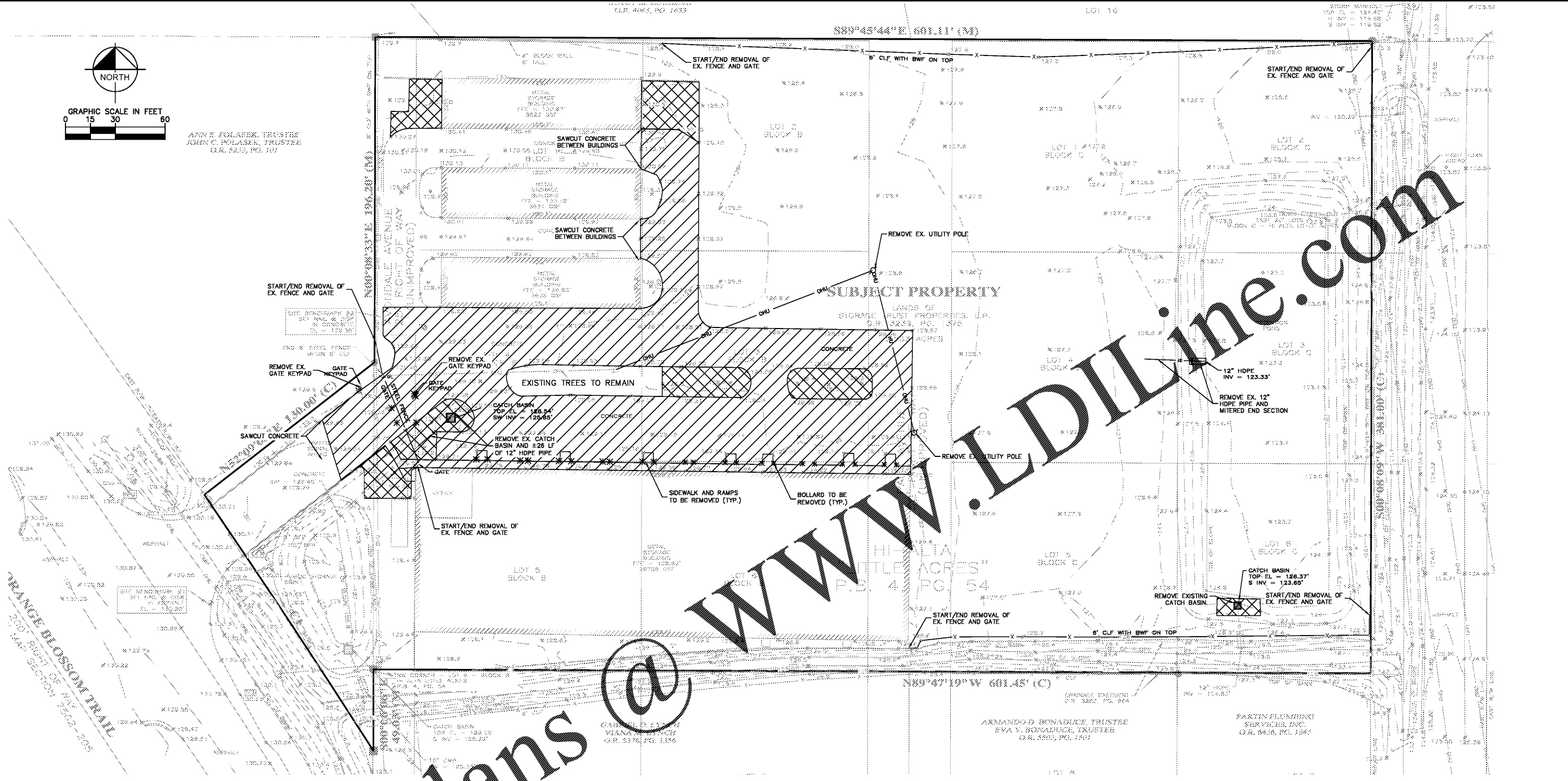


Plotted By: Anderson, Scott - Sheet Set: 147654001 - Seminole Public Storage - Layout C-050 DEMOLITION PLAN - June 11, 2020 06:27:53pm - s:\VRB_LDEV\147654001 - Public Storage - Seminole County - Public Storage - Layout C-050 DEMOLITION PLAN - 147654001.dwg
 This document, together with the concepts and designs presented herein, is intended only for the specific purpose and client for which it was prepared. Reuse of and improper reliance on this document without written authorization and adaptation by Kimley-Horn and Associates, Inc. shall be without liability to Kimley-Horn and Associates, Inc.



ANN E. POLASEK, TRUSTEE
 JOHN C. POLASEK, TRUSTEE
 O.R. 5213, PG. 107

Order Plans @ WWW.LDILine.com

DEMOLITION NOTES

1. THE CONTRACTOR IS RESPONSIBLE FOR THE DEMOLITION, REMOVAL, AND DISPOSAL (IN A LOCATION APPROVED BY ALL GOVERNING AUTHORITIES) ALL STRUCTURES, PADS, WALLS, FLUES, FOUNDATIONS, PARKING DRIVES, DRAINAGE, STRUCTURES, UTILITIES, ETC., SUCH THAT THE IMPROVEMENTS SHOWN ON THE REMAINING PLANS CAN BE CONSTRUCTED. ALL FACILITIES TO BE REMOVED SHALL BE UNDERCUT TO SUITABLE MATERIAL AND BROUGHT TO GRADE WITH SUITABLE COMPACTED FILL MATERIAL PER THE SPECIFICATIONS.
2. THE CONTRACTOR IS RESPONSIBLE FOR REMOVING ALL DEBRIS FROM THE SITE AND DISPOSING OF THE DEBRIS IN A LAWFUL MANNER. THE CONTRACTOR IS RESPONSIBLE FOR OBTAINING ALL PERMITS REQUIRED FOR PAYING ALL FEES AND CHARGES.
3. THE CONTRACTOR SHALL COORDINATE WITH RESPECTIVE UTILITY COMPANIES PRIOR TO THE REMOVAL AND/OR RELOCATION OF UTILITIES. THE CONTRACTOR SHALL COORDINATE WITH THE UTILITY COMPANY CONCERNING PORTIONS OF WORK WHICH MAY BE PERFORMED BY THE UTILITY COMPANY'S FORCES AND ANY FEES WHICH ARE TO BE PAID TO THE UTILITY COMPANY FOR THEIR SERVICES. THE CONTRACTOR IS RESPONSIBLE FOR PAYING ALL FEES AND CHARGES.
4. THE LOCATIONS OF ALL EXISTING UTILITIES SHOWN ON THIS PLAN HAVE BEEN DETERMINED FROM THE BEST INFORMATION AVAILABLE AND ARE GIVEN FOR THE CONVENIENCE OF THE CONTRACTOR. THE ENGINEER ASSUMES NO RESPONSIBILITY FOR THEIR ACCURACY. PRIOR TO THE START OF ANY DEMOLITION ACTIVITY, THE CONTRACTOR SHALL NOTIFY THE UTILITY COMPANIES FOR ONSITE LOCATIONS OF EXISTING UTILITIES.
5. ALL EXISTING SEWERS, PIPING AND UTILITIES SHOWN ARE NOT TO BE INTERPRETED AS THE EXACT LOCATION, OR AS THE ONLY OBSTACLES THAT MAY OCCUR ON THE SITE. VERIFY EXISTING CONDITIONS AND PROCEED WITH CAUTION AROUND ANY ANTICIPATED FEATURES. GIVE NOTICE TO ALL UTILITY COMPANIES REGARDING DESTRUCTION AND REMOVAL OF ALL SERVICE LINES AND CAP ALL LINES BEFORE PROCEEDING WITH THE WORK. UTILITIES DETERMINED TO BE ABANDONED AND LEFT IN PLACE SHALL BE GROUTED IF UNDER BUILDING.
6. ELECTRICAL, TELEPHONE, CABLE, WATER, FIBER OPTIC CABLE AND/OR GAS LINES NEEDING TO BE REMOVED OR RELOCATED SHALL BE COORDINATED WITH THE AFFECTED UTILITY COMPANY. ADEQUATE TIME SHALL BE PROVIDED FOR RELOCATION AND CLOSE COORDINATION WITH THE UTILITY COMPANY IS NECESSARY TO PROVIDE A SMOOTH TRANSITION IN UTILITY SERVICE. CONTRACTOR SHALL PAY CLOSE ATTENTION TO EXISTING UTILITIES WITHIN THE ANY ROAD RIGHT OF WAY DURING CONSTRUCTION.
7. CONTRACTOR MUST PROTECT THE PUBLIC AT ALL TIMES WITH FENCING, BARRICADES, ENCLOSURES, ETC., (AND OTHER APPROPRIATE BEST MANAGEMENT PRACTICES) AS APPROVED BY CONSTRUCTION MANAGER.
8. CONTINUOUS ACCESS SHALL BE MAINTAINED FOR THE SURROUNDING PROPERTIES AT ALL TIMES DURING DEMOLITION OF THE EXISTING FACILITIES.
9. SHOULD REMOVAL AND/OR RELOCATION ACTIVITIES DAMAGE FENCING, CART CORRAL, LIGHTING AND/OR STORM INLET STRUCTURES, THE CONTRACTOR SHALL PROVIDE NEW MATERIALS IN ACCORDANCE WITH THE CONTRACT DOCUMENTS. EXCEPT FOR MATERIALS DESIGNED TO BE RELOCATED ON THIS PLAN, ALL OTHER CONSTRUCTION MATERIALS SHALL BE NEW.
10. CONTRACTOR MAY LIMIT SAW-CUT & PAVEMENT REMOVAL TO ONLY THOSE AREAS WHERE IT IS REQUIRED AS SHOWN ON THESE CONSTRUCTION PLANS BUT IF ANY DAMAGE IS INCURRED ON ANY OF THE SURROUNDING PAVEMENT, ETC. THE CONTRACTOR SHALL BE RESPONSIBLE FOR ITS REMOVAL AND REPAIR.
11. WHERE EXISTING PAVEMENT IS INDICATED TO BE REMOVED AND REPLACED, THE CONTRACTOR SHALL SAWCUT THE FULL DEPTH PAVEMENT FOR A SMOOTH AND STRAIGHT JOINT AND REPLACE THE PAVEMENT WITH THE PROPOSED PAVEMENT UNLESS OTHERWISE INDICATED.

LEGEND

- PROPERTY LINE
- EXISTING WATERLINE TO REMAIN
- EXISTING STORMPIPE TO REMAIN
- EXISTING FENCE TO REMAIN
- EXISTING OVERHEAD UTILITY LINE TO REMAIN
- EXISTING OVERHEAD UTILITY LINE TO BE REMOVED
- EXISTING FENCE TO BE REMOVED

DEMOLITION LEGEND

- [Hatched Box] PAVEMENT AND CONCRETE CURB REMOVAL
- [Cross-hatched Box] LANDSCAPE REMOVAL
- [Star Symbol] EXISTING BOLLARD TO BE REMOVED

NO.	REVISIONS	DATE	BY

Kimley»Horn
 © 2020 KIMLEY-HORN AND ASSOCIATES, INC.
 445 24TH STREET, SUITE 200, VERO BEACH, FL 32960
 PHONE: 772-794-1100
 WWW.KIMLEY-HORN.COM CA 0000096

LICENSED PROFESSIONAL
 CHRISTOPHER J. HOLLEN, P.E.
 FLORIDA LICENSE NUMBER
 74685

KHA PROJECT
 147654001
 DATE
 10/22/19
 SCALE
 AS SHOWN
 DESIGNED BY
 DFD
 DRAWN BY
 DFD
 CHECKED BY
 C/JH

DEMOLITION PLAN

PUBLIC STORAGE APOPKA
 2431 S. ORANGE BLOSSOM TRAIL
 SEMINOLE COUNTY, FLORIDA
Public Storage
 SHEET NUMBER
C-050

