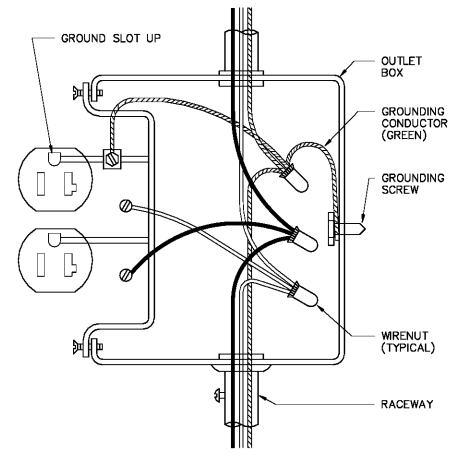
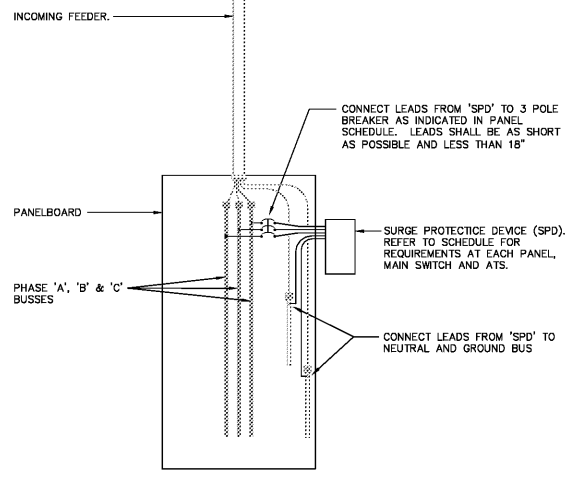


DOOR SECURITY ROUGH-IN DETAIL
 NOT TO SCALE



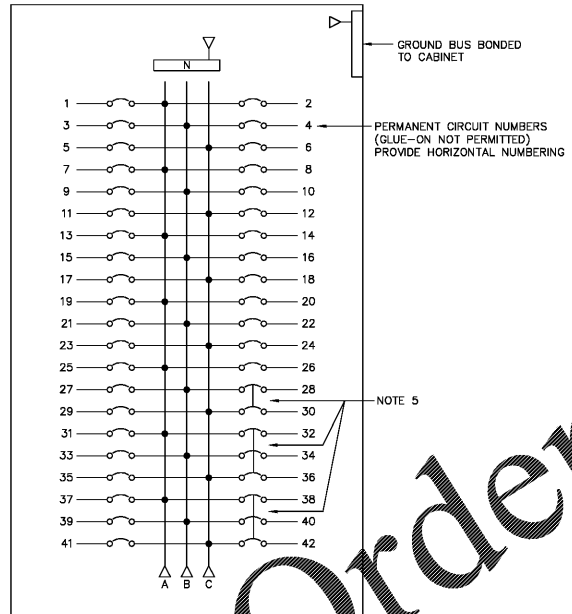
RECEPTACLE INSTALLATION DETAIL
 NOT TO SCALE



SURGE PROTECTIVE DEVICE CONNECTION DETAIL
 NOT TO SCALE

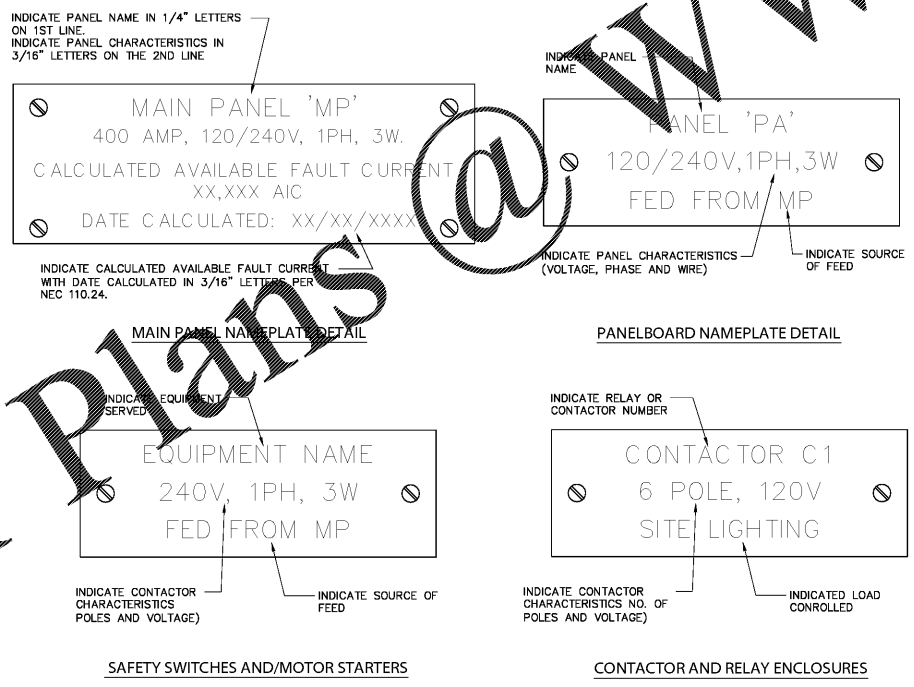
TYPE	DESCRIPTION	MOUNTING		MANUFACTURER	CATALOG NUMBER	L.E.D.			TOTAL WATTS		
		TYPE	HEIGHT			LUMENS	COLOR TEMPERATURE	VOLTS			
R1	RECESSED 2x4 LAY-IN L.E.D. VOLUMETRIC TROFFER LIGHT FIXTURE WITH INTEGRAL DRIVER	RECESSED	CEILING	LITHONIA	2VTL4-48L-ADP-EZ1-LP840	4,351	4000K	1	120	46	
R1E	SAME AS FIXTURE TYPE 'R1' EXCEPT WITH AN EMERGENCY BATTERY PACK TO OPERATE FIXTURE FOR 90 MINUTES UPON LOSS OF POWER	RECESSED	CEILING	LITHONIA	2VTL4-48L-ADP-EZ1-LP840-EL-000	4,351	4000K	1	120	46	
R2	RECESSED 2x4 L.E.D. FLAT PANEL LIGHT FIXTURE WITH INTEGRAL DRIVER	RECESSED	CEILING	LITHONIA	EPANEL 2X4 400LM 50CRI 40K MIN10	4,351	4000K	1	120	38.9	
R2E	SAME AS FIXTURE TYPE 'R2' EXCEPT WITH AN EMERGENCY BATTERY PACK TO OPERATE FIXTURE FOR 90 MINUTES UPON LOSS OF POWER	RECESSED	CEILING	LITHONIA	EPANEL 2X4 400LM 50CRI 40K MIN10 MVOLT E10WCP	4,351	4000K	1	120	38.9	
R3	6" ROUND RECESSED DOWNLIGHT WITH A CLEAR SEMI-DIFFUSE REFLECTOR AND AN INTEGRAL DRIVER	RECESSED	CEILING	PRESCOLITE	LF6SL-DM1-120-6LFSL-15L-40K-8-SS-824	1,000	4000K	1	120	20	
R3E	SAME AS FIXTURE TYPE 'R3' EXCEPT WITH AN EMERGENCY BATTERY PACK TO OPERATE FIXTURE FOR 90 MINUTES UPON LOSS OF POWER	RECESSED	CEILING	PRESCOLITE	LF6SL-DM1-EM-120-6LFSL-15L-40K-8-SS-824	1,000	4000K	1	120	20	
R4	4" ROUND RECESSED DOWNLIGHT WITH A CLEAR SEMI-DIFFUSE REFLECTOR AND AN INTEGRAL DRIVER AND AN EMERGENCY BATTERY PACK TO OPERATE FIXTURE FOR 90 MINUTES UPON LOSS OF POWER	RECESSED	CEILING	PRESCOLITE	LF4SL-DM1-120-6LFSL-10L-40K-8-SS-824	1,000	4000K	1	120	16	
R5	8" SQUARE RECESSED NON-IC DOWNLIGHT	RECESSED	CEILING	TBD	LDRREQ-4090-LS-8-AR-LS-MVOLT-EZ1	6,000	4000K	1	120/277	69.9	
S1	4'-0" SURFACE MOUNTED LED STRIP FIXTURE WITH SNAP ON PROTECTIVE DIFFUSE, WHITE FINISH WITH EMERGENCY BATTERY PACK	SURFACE	CEILING	LITHONIA	2LN L40 3000LM FST MVOLT 40K 50CRI-E10WVLP-WH	3,293	4000K	1	120	25	
W1	2'-0" WALL MOUNTED VANITY LIGHT	WALL	6" ABOVE MIRROR TO BOTTOM	COLUMBIA	CW16-2-40ML-SM-FR-FF-E-U	2,848	4000K	1	120	30	
W2	WALL MOUNTED FIXTURE, TO BE SELECTED AND PROVIDED BY OWNER.	WALL	VERIFY WITH ARCH DWGS	TBD	TBD	TBD	TBD	1	120	TBD	
W3	6'-0" WALL MOUNTED ADJUSTABLE FLOOD LIGHT WITH INTEGRAL DRIVER, COLOR TO BE SELECTED BY THE ARCHITECT.	WALL	VERIFY WITH ARCH DWGS	AMETRIX	A08-S1-A-1-LED-40K-O-277				120	5	
W4	OUTDOOR BACKLIT ATM SIGN, WET LOCATION LISTED	WALL	VERIFY WITH ARCH DWGS	SIGNAL-TECH	PH0719G-125				120/277	5	
FL1	STANCHION MOUNTED ADJUSTABLE L.E.D. FLOOD LIGHT WITH NARROW SPOT DISTRIBUTION, FIXTURE TO BE U.L. LISTED FOR WET LOCATION, COLOR TO BE SELECTED BY THE ARCHITECT.	GROUND	SEE DETAIL	LITHONIA	DS9F1-LED-F1-40K-NSP-MVOLT-TXK	2,876	4000K	1	120	21	
PL2H	LED SITE LIGHTING FIXTURE WITH TYPE IV DISTRIBUTION AND HOUSE SIDE SHIELD ON A 25'-0" SQUARE STRAIGHT STEEL POLE, FINISH TO BE SELECTED BY ARCHITECT.	GROUND	SEE DETAIL	MCGRAW-EDISON	FIXTURE: GLEON-AF-04-LED-E1-SL4-HSS POLE: S584A285FM4	24,062	4000K	1	120	225	
PL3	LED SITE LIGHTING FIXTURE WITH TYPE II DISTRIBUTION AND HOUSE SIDE SHIELD ON A 25'-0" SQUARE STRAIGHT STEEL POLE, FINISH TO BE SELECTED BY ARCHITECT.	GROUND	SEE DETAIL	MCGRAW-EDISON	FIXTURE: GLEON-AF-02-LED-E1-SL4-T POLE: S584A285FM4	12,450	4000K	1	120	113	
PL4	LED SITE LIGHTING FIXTURE WITH TYPE IV DISTRIBUTION AND HOUSE SIDE SHIELD ON A 25'-0" SQUARE STRAIGHT STEEL POLE, FINISH TO BE SELECTED BY ARCHITECT.	GROUND	SEE DETAIL	MCGRAW-EDISON	FIXTURE: GLEON-AF-06-LED-E1-SL4-T POLE: S584A285FM4	34,600	4000K	1	120	333	
PL4H	LED SITE LIGHTING FIXTURE WITH TYPE IV DISTRIBUTION AND HOUSE SIDE SHIELD ON A 25'-0" SQUARE STRAIGHT STEEL POLE, FINISH TO BE SELECTED BY ARCHITECT.	GROUND	SEE DETAIL	MCGRAW-EDISON	FIXTURE: GLEON-AF-06-LED-E1-SL4-HSE POLE: S584A285FM4	34,600	4000K	1	120	333	
X1	SINGLE FACE L.E.D. EDGE LIT EXIT SIGN WITH MIRRORRED BACK AND INTEGRAL BATTERY PACK. VERIFY COLOR OF LETTERS WITH LOCAL AUTHORITY PRIOR TO PURCHASE.	WALL	8'-0" AFF	DUAL LITE	LEW-S-11-WHE14M				FURNISHED WITH UNIT	120	5
XD	WALL MOUNTED EXIT DISCHARGE LIGHT WITH INTEGRAL HEATER AND BATTERY. COLOR TO BE SELECTED BY ARCHITECT.	WALL	8'-0" AFF	DUAL LITE	PG-HTR-11				FURNISHED WITH UNIT	120	15.5

GENERAL NOTES:
 A. MANUFACTURER CATALOG NUMBERS ARE SHOWN FOR GENERAL DESCRIPTIVE PURPOSES AND TO ESTABLISH A STANDARD OF QUALITY. MANUFACTURERS LISTED AS "EQUAL" DOES NOT IMPLY THAT THE PRODUCTS ARE IDENTICAL TO THE PRODUCTS LISTED. ALL PRODUCTS SHALL BE U.L. LISTED.
 B. CONTRACTOR SHALL PROVIDE LUMINAIRES COMPLETE WITH ALL OPTIONS AND ACCESSORIES REQUIRED FOR A COMPLETE INSTALLATION. ALL PRODUCTS SHALL BE U.L. LISTED.
 C. PROVIDE PROPER LAMP FOR REFLECTOR ASSEMBLY SPECIFIED AND AS RECOMMENDED BY LUMINAIRE MANUFACTURER.
 D. PROVIDE FLUORESCENT LAMPS WITH LOW-MERCURY CONTENT, COMPLIANT WITH FEDERAL EPA TOLP REQUIREMENTS, a.k.a. "ECO", "ALTO", OR "ECOLUX".
 E. VERIFY CONSTRUCTION AND TYPE CEILING TO BE INSTALLED AND PROVIDE LUMINAIRES IN APPROPRIATE CONFIGURATION WITH ALL HARDWARE AND ACCESSORIES REQUIRED FOR A COMPLETE INSTALLATION.
 F. PROVIDE LUMINAIRES WITH JOINING PLATES, END CAPS, CANOPIES, MOUNTING HARDWARE, ETC., AS REQUIRED FOR COMPLETE INSTALLATION.
 G. EXIT LIGHTS SHALL BE PROVIDED WITH GREEN LETTERS REQUIRED BY LOCAL CODE AUTHORITY. FURNISH WITH CHEVRON DIRECTIONAL INDICATORS AS INDICATED AND/OR AS REQUIRED.
 H. PROVIDE DEVICES FOR SECURING LAY-IN TYPE LUMINAIRES TO CEILING GRID TO COMPLY WITH ARTICLE 415 OF THE NATIONAL ELECTRICAL CODE.
 I. FURNISH LINEAR LUMINAIRES IN CONTINUOUS ROWS OR PATTERNS AS INDICATED ON DRAWINGS. PROVIDE WITH CORNER, ANGLE, AND END PIECES AS REQUIRED FOR A COMPLETE FINISHED LIGHTING FIXTURES PROVIDED SHALL MEET PERFORMANCE CRITERIA LISTED IN THIS SCHEDULE. IF THERE IS A DISCREPANCY BETWEEN CATALOG NUMBER LISTED AND PERFORMANCE CRITERIA LISTED, CONTRACTOR SHALL REQUEST CLARIFICATION PRIOR TO PURCHASE, BUT ALWAYS ASSUME HIGHEST PERFORMANCE FOR FIXTURES.



PANEL NOTES:
 1. ALL PANELS TO HAVE DOOR-IN-DOOR (HINGE-ON) CONSTRUCTION.
 2. INSTALL NAMEPLATE (PER DETAIL) USING MACHINE SCREWS OR 2 PART EPOXY (12HR)
 3. PANEL TO HAVE WELDED METAL DIRECTORY CARD HOLDER.
 4. ALL MULTI-POLE BREAKERS SHALL HAVE A COMMON TRIP MECHANISM FOR SIMULTANEOUS OPERATION.
 5. PROVIDE HANDLE TIE FOR MULTIPLE BREAKERS WITH CIRCUITS THAT SHARE A COMMON NEUTRAL.

DETAIL: PANELBOARD
 TYPICAL CONNECTION AND NUMBERING SEQUENCE - NO SCALE



DETAIL NOTES:
 1. PROVIDE NAMEPLATES FOR MAIN PANEL, ALL BREAKERS IN TYPE 'CCB' PANELS, TRANSFER SWITCH(ES), PANELBOARDS, ALL SAFETY SWITCHES, MOTOR STARTERS, CONTACTOR AND RELAY ENCLOSURES, ETC.
 2. ALL NAMEPLATES SHALL BE WHITE WITH 1/4" HIGH ENGRAVED LETTERING, BLACK FOR NORMAL POWER AND RED FOR EMERGENCY POWER UNLESS NOTED OTHERWISE.
 3. ALL NAMEPLATES TO BE SECURED TO THE EQUIPMENT WITH SCREWS OR HIGH STRENGTH WATERPROOF EPOXY ADHESIVE.

ELECTRICAL EQUIPMENT NAMEPLATE DETAILS
 NOT TO SCALE

Shendon Thuckestein Architects, PC
 architecture . planning . interior design
 2126 Morris Avenue Birmingham, AL 35203
 Phone: (205) 352-1751
 Fax: (205) 352-1775
 email: info@shendo.com
 www.shendo.com

A New Branch Bank for
Tyndall
 FEDERAL CREDIT UNION
 Dothan, Alabama

RELEASES / DESCRIPTION / DATES
 NOT FOR CONSTRUCTION
 RELEASED FOR CONSTRUCTION
 DATE: 06.23.2020
 DRAWN: ---
 CHECKED: ---
 APPROVED: HHA
 PROJECT NUMBER: 20012.01
 SHEET TITLE: LIGHTING FIXTURE SCHEDULE AND ELECTRICAL DETAILS
 DRAWING NO.: E0.03