

MILLWORK GENERAL NOTES

1. EXPOSED WOOD SURFACES TO BE FINISHED PL-1, UNLESS OTHERWISE NOTED
2. MILLWORK FRONTS & DOORS MATERIAL IS TO BE PLYWOOD.
3. MILLWORK BODIES & CASINGS MATERIAL IS TO BE MDF.
4. ALL MILLWORK IN WET LOCATIONS IS TO BE CONSTRUCTED ON MARINE-GRADE PLYWOOD.
5. DOOR/DRAWER PULLS TO BE HARPLE 117.97.461, CHROME MATTE FINISH, 3 1/2" HOLE SPACING
6. HINGES TO BE CONCEALED, SALIC C2RPA99, SATIN FINISH
7. CABINET SHELF STANDARDS TO BE KV PK255(ZC)
8. INTERIOR SURFACES, INCLUDING INSIDES OF DOORS, ARE TO BE LINED WITH WHITE MELAMINE
9. HARDWARE TO BE SUBMITTED FOR APPROVAL
10. VERIFY EQUIPMENT OPENINGS PRIOR TO FABRICATION



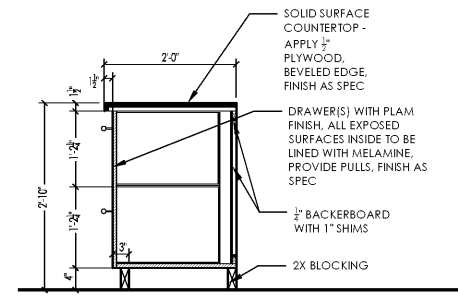
architecture . planning . interior design

2126 Morris Avenue
Birmingham, AL 35203
Phone (205) 322-1751
Fax (205) 322-1778
email info@hplusha.com
www.hplusha.com

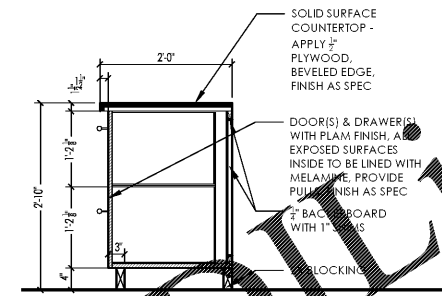
A New Branch Bank for

Tyndall

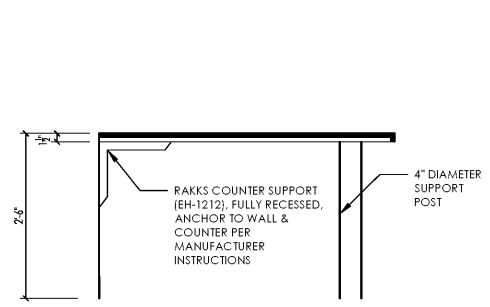
FEDERAL CREDIT UNION
Dothan, Alabama



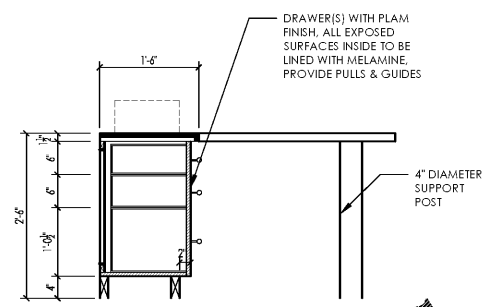
10 OFFICE CABINET - SECTION
A7.6 3/4" = 1'-0"



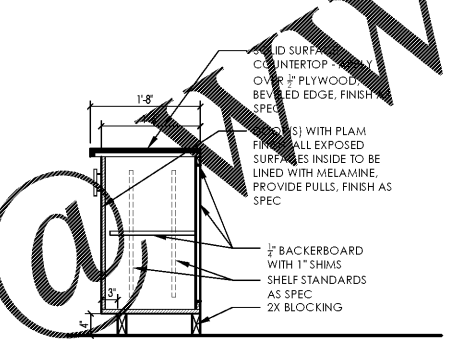
09 OFFICE FILE - SECTION
A7.6 3/4" = 1'-0"



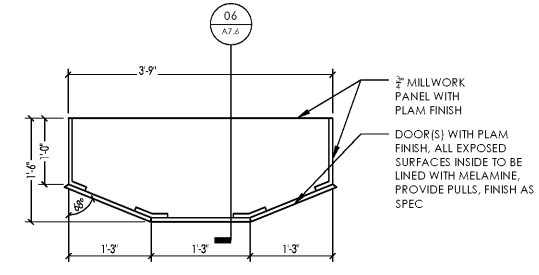
08 FSR WORKSTATION - DESK SECTION
A7.6 3/4" = 1'-0"



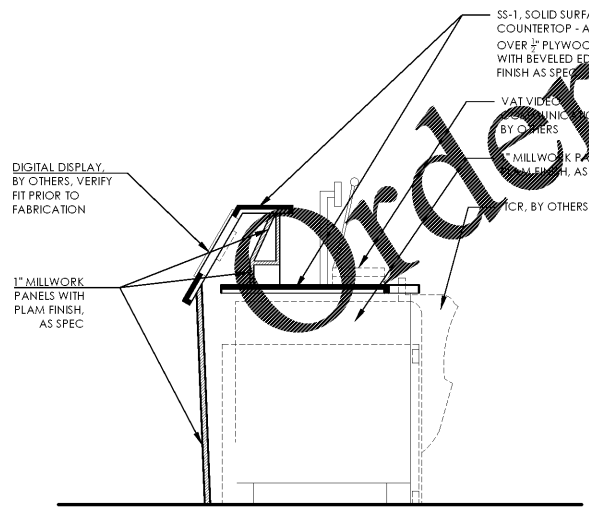
07 FSR WORKSTATION - STORAGE SECTION
A7.6 3/4" = 1'-0"



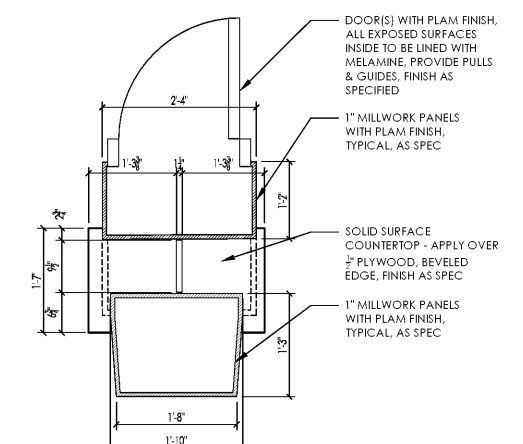
06 COFFEE BAR - SECTION
A7.6 3/4" = 1'-0"



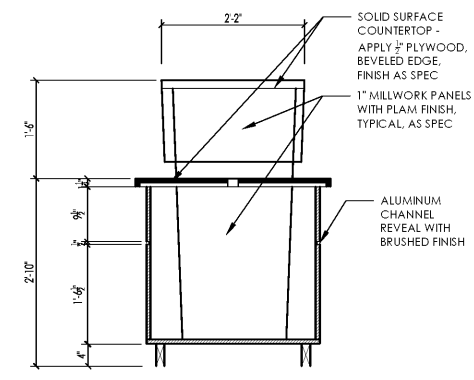
05 COFFEE BAR - PLAN SECTION
A7.6 3/4" = 1'-0"



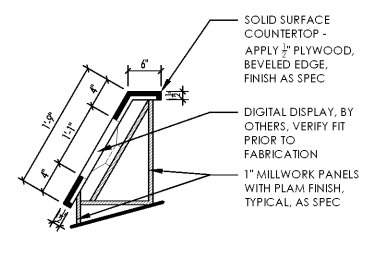
04 TELLER TOWER - SECTION
A7.6 3/4" = 1'-0"



03 CHECK IN STATION - PLAN SECTION
A7.6 3/4" = 1'-0"



02 CHECK IN STATION - SECTION
A7.6 3/4" = 1'-0"



01 CHECK IN STATION - MONITOR SECTION
A7.6 3/4" = 1'-0"

Order Plans

WWW.EDLINE.COM

RELEASES / DESCRIPTION / DATES

NOT FOR CONSTRUCTION
RELEASED FOR CONSTRUCTION

DATE 06.23.2020
DRAWN --
CHECKED --
APPROVED HHA

PROJECT NUMBER 20012.01

SHEET TITLE MILLWORK DETAILS

DRAWING NO. A7.6