

CONSTRUCTION GENERAL NOTES:

- BUILDING TO BE TYPE V(B) UNPROTECTED, UN-SPRINKLERED CONSTRUCTION; GROUP B - BUSINESS OCCUPANCY.
- DIMENSIONS SHOWN ARE TO FACE OF STUD UNLESS NOTED OTHERWISE - TYPICAL.
- REFER TO PLANS, DETAILS AND SECTIONS FOR FURTHER CLARIFICATION OF INTERIOR FINISHES.
- REFER TO REFLECTED CEILING PLAN (A3.1) & ROOM SCHEDULE (A8.1) FOR SPECIFIC CEILING TYPE AND HEIGHT.
- PROVIDE FIRE EXTINGUISHER & CABINET (SEMI-RECESSED). SEE LIFE SAFETY SHEET FOR LOCATION & QUANTITY.

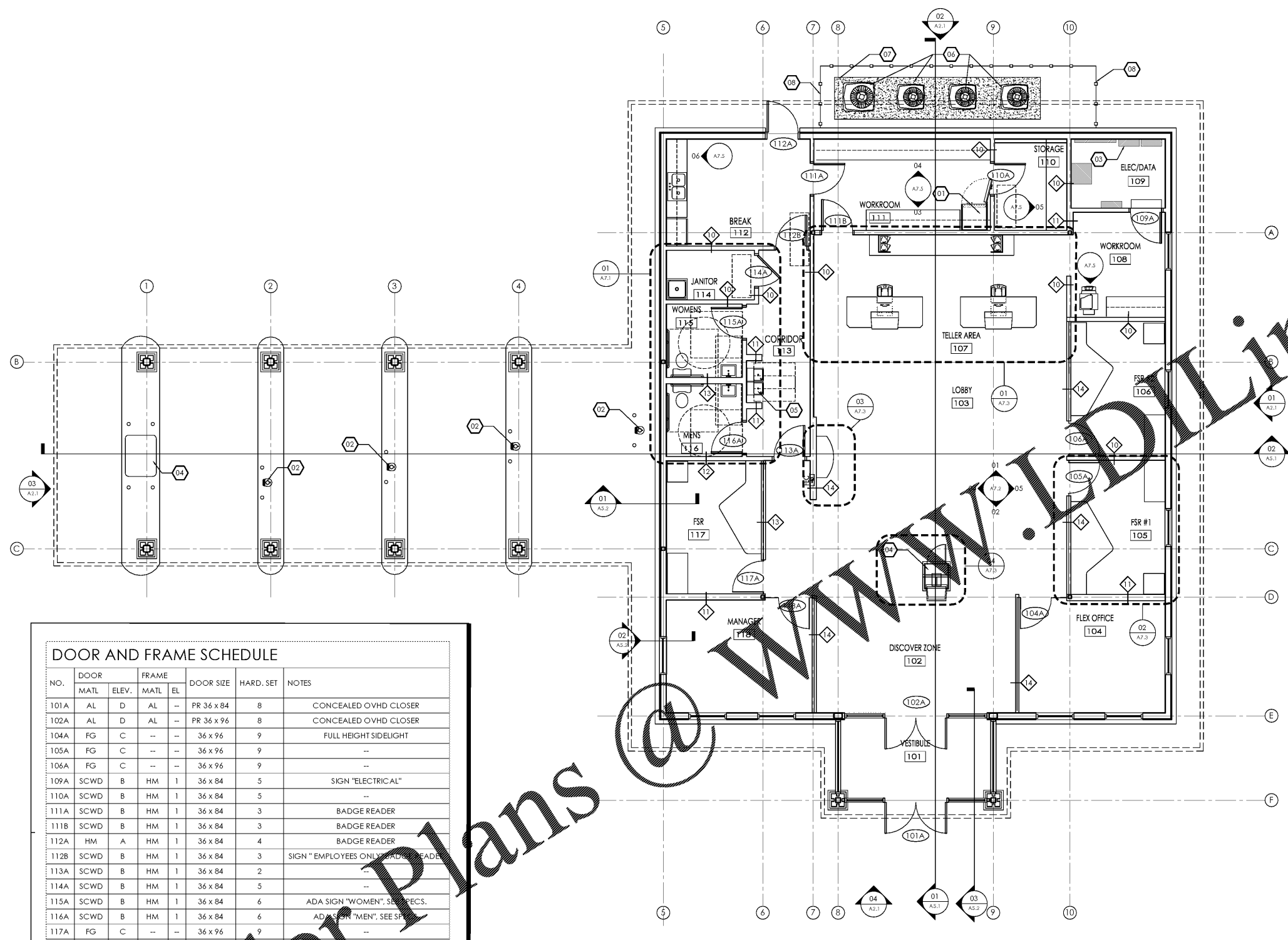
CONSTRUCTION KEYNOTES:

- 01 BANK EQUIPMENT - CASH VAULT, BY OWNER
- 02 BANK EQUIPMENT - REMOTE TELLER UNIT, BY OWNER - SEE EQUIPMENT DRAWINGS FOR DETAILS
- 03 SECURITY EQUIP - SERVER RACK, BY OWNER
- 04 ATM, BY OWNER
- 05 WATER FOUNTAIN
- 06 CASH UNIT, SEE SCHED.
- 07 CONCRETE PAD
- 08 WOOD FENCE - 6" X 48" VERTICAL WOOD SLATS ON 2X4 HORIZONTAL FRAME ON 4X4 POSTS SET IN CONCRETE

PARTITION LEGEND:

- SPACE STUDS @ 16" O.C. @ ALL LOAD-BEARING PARTITIONS.
- ALL BATHROOM WALLS INSULATED.

SYM.	CONSTRUCTION	RTG.	DESCRIPTION
10		N/A	5/8" GYP. BD. SCREWED TO BOTH SIDES OF 3-5/8" METAL STUDS @ 24" O.C.
11		N/A	5/8" GYP. BD. SCREWED TO BOTH SIDES OF 6" METAL STUDS @ 24" O.C.
12		N/A	5/8" GYP. BD. SCREWED TO BOTH SIDES OF 3-5/8" METAL STUDS @ 24" O.C. W/ FULL THICKNESS SOUND ATTENUATION INSULATION
13		N/A	5/8" GYP. BD. SCREWED TO BOTH SIDES OF 6" METAL STUDS @ 24" O.C. W/ FULL THICKNESS SOUND ATTENUATION INSULATION
14		N/A	5/8" GYP. BD. SCREWED TO BOTH SIDES OF 3-5/8" METAL STUDS @ 24" O.C. - SEE A7.2 FOR EXTENTS OF FRAMELESS GLASS DETAIL.



DOOR AND FRAME SCHEDULE

NO.	DOOR		FRAME		DOOR SIZE	HARD. SET	NOTES
	MATL	ELEV.	MATL	EL			
101A	AL	D	AL	--	PR 36 x 84	8	CONCEALED OVHD CLOSER
102A	AL	D	AL	--	PR 36 x 96	8	CONCEALED OVHD CLOSER
104A	FG	C	--	--	36 x 96	9	FULL HEIGHT SIDELIGHT
105A	FG	C	--	--	36 x 96	9	--
106A	FG	C	--	--	36 x 96	9	--
109A	SCWD	B	HM	1	36 x 84	5	SIGN "ELECTRICAL"
110A	SCWD	B	HM	1	36 x 84	5	--
111A	SCWD	B	HM	1	36 x 84	3	BADGE READER
111B	SCWD	B	HM	1	36 x 84	3	BADGE READER
112A	HM	A	HM	1	36 x 84	4	BADGE READER
112B	SCWD	B	HM	1	36 x 84	3	SIGN "EMPLOYEES ONLY" BADGE READER
113A	SCWD	B	HM	1	36 x 84	2	--
114A	SCWD	B	HM	1	36 x 84	5	--
115A	SCWD	B	HM	1	36 x 84	6	ADA SIGN "WOMEN", SEE SPECS.
116A	SCWD	B	HM	1	36 x 84	6	ADA SIGN "MEN", SEE SPECS.
117A	FG	C	--	--	36 x 96	9	--
118A	FG	C	--	--	36 x 96	9	FULL HEIGHT SIDELIGHT

NOTES:

GENERAL NOTE:

- ALL GLASS LOCATED WITHIN 30" OF FLOOR ELEVATION, OR WITHIN 18" HORIZONTALLY OF A DOOR, OR WITHIN A DOOR, TO BE TEMPERED.
- ALL EXTERIOR GLASS UNITS SHALL BE INSULATED EXCEPT DOOR UNITS.
- SEE FINISH SCHEDULE FOR GLASS TYPES (GL) & SEE SPECS FOR INSULATED GLASS TYPES (IG).

LEGEND:

INT = INTERIOR
EXT = EXTERIOR

HM = HOLLOW METAL
SCWD = SOLID CORE WOOD
FG = FRAMELESS GLASS
ALUM = ALUMINUM

ST = STAINED
PNT = PAINTED

TG = TEMPERED GLASS
IG = INSULATED GLASS

CR/ES = CARD READER/ELECTRIC STRIKE

ALL DOORS TO RECEIVE:

HARDWARE INDICATED IN SPECIFICATIONS.

NOTE: COORDINATE KEYING REQUIREMENTS W/ OWNER PRIOR TO ORDERING HARDWARE.

GLASS SCHEDULE
SEE SPECS FOR GLAZING TYPES AND SCHEDULE

CONSTRUCTION FLOOR PLAN
SCALE: 1/8" = 1'-0"

hendon huckestein architects, pc

architecture . planning . interior design

2126 Morris Avenue
Birmingham, AL 35203
Phone (205) 322-1751
Fax (205) 322-1778
email info@hplusna.com
www.hplusna.com

A New Branch Bank for

Tyndall

FEDERAL CREDIT UNION

Dothan, Alabama

RELEASES / DESCRIPTION / DATES

NOT FOR CONSTRUCTION	<input type="checkbox"/>
RELEASED FOR CONSTRUCTION	<input checked="" type="checkbox"/>
DATE	06.23.2020
DRAWN	--
CHECKED	--
APPROVED	HHHA
PROJECT NUMBER	20012.01
SHEET TITLE	CONSTRUCTION FLOOR PLAN
DRAWING NO.	A1.1