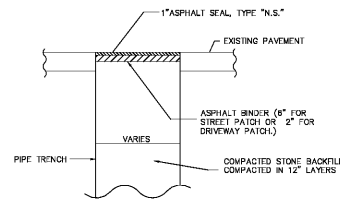
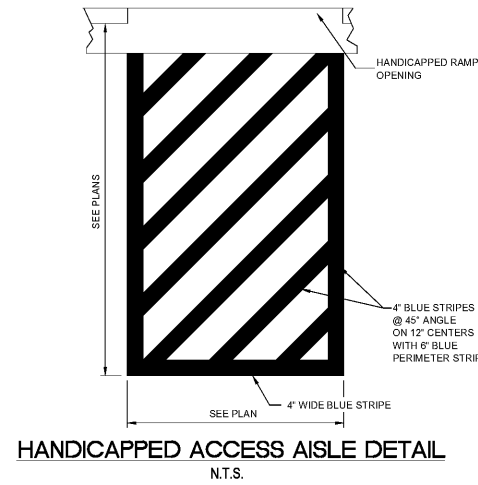


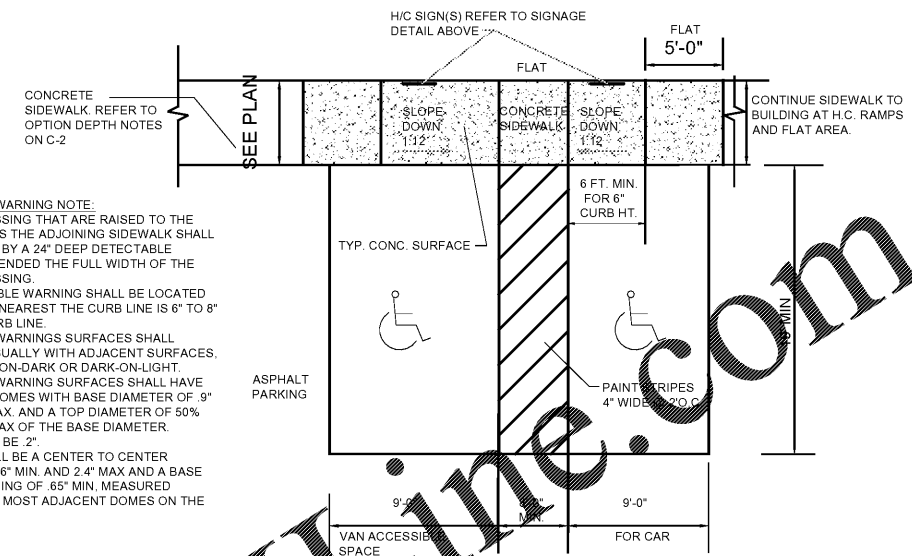
TRENCH BACKFILL DETAILS  
N.T.S.



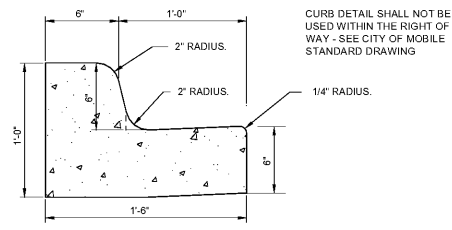
PATCH PAVING DETAIL  
N.T.S.



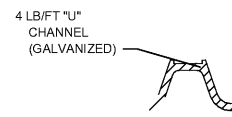
HANDICAPPED ACCESS AISLE DETAIL  
N.T.S.



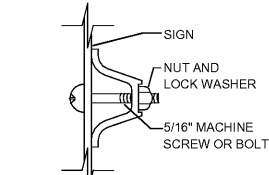
HANDICAPPED RAMP DETAIL  
N.T.S.



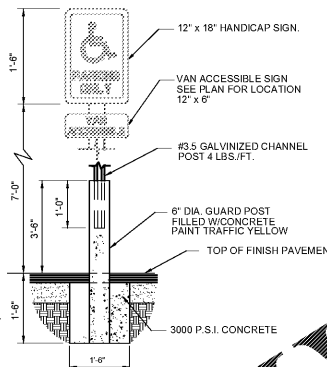
18" CONCRETE CURB AND GUTTER DETAIL  
N.T.S.



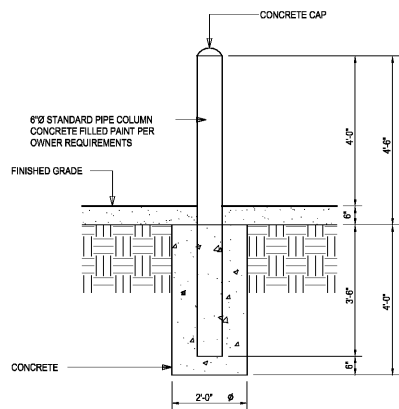
POST SECTION  
N.T.S.



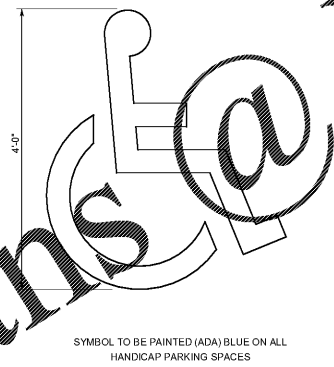
MOUNTING  
N.T.S.



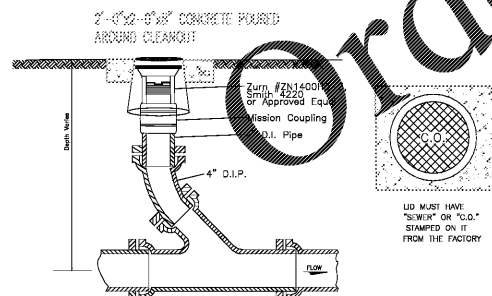
HANDICAPPED SIGN DETAIL  
N.T.S.



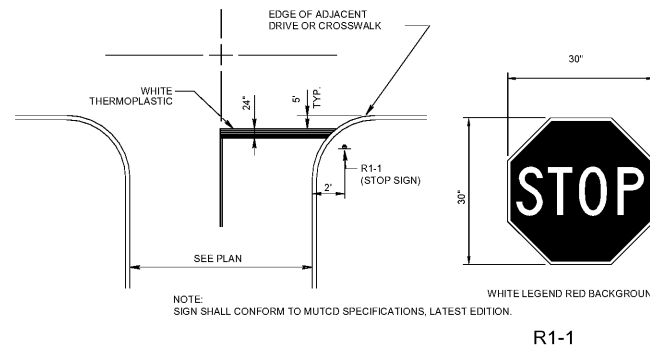
PIPE BOLLARD DETAIL  
N.T.S.



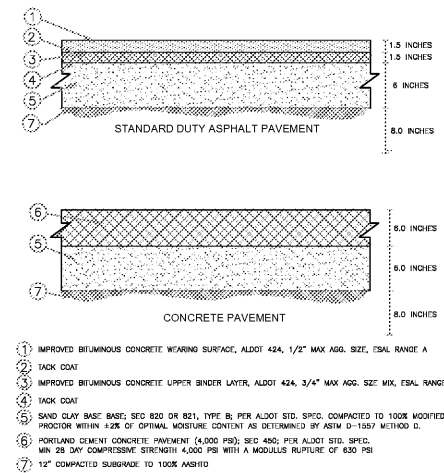
HANDICAPPED SYMBOL DETAIL  
N.T.S.



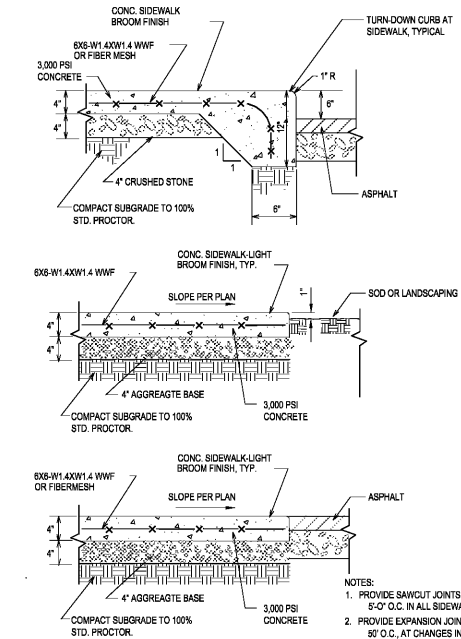
CLEANOUT DETAIL  
N.T.S.



STOP BAR AND STOP SIGN DETAIL  
N.T.S.



PAVING SECTIONS  
N.T.S.



SIDEWALK DETAIL  
N.T.S.

DETECTABLE WARNING NOTE:  
MARKED CROSSING THAT ARE RAISED TO THE SAME LEVEL AS THE ADJOINING SIDEWALK SHALL BE PRECEDED BY A 24" DEEP DETECTABLE WARNING EXTENDED THE FULL WIDTH OF THE MARKED CROSSING.  
THE DETECTABLE WARNING SHALL BE LOCATED SO THE EDGE NEAREST THE CURB LINE IS 6" TO 8" FROM THE CURB LINE.  
DETECTABLE WARNING SURFACES SHALL CONTRAST VISUALLY WITH ADJACENT SURFACES, EITHER LIGHT-ON-DARK OR DARK-ON-LIGHT. DETECTABLE WARNING SURFACES SHALL HAVE TRUNCATED DOMES WITH BASE DIAMETER OF 50% MIN. TO 1.4" MAX. AND A TOP DIAMETER OF 50% MIN. TO 65% MAX OF THE BASE DIAMETER. HEIGHT SHALL BE 2".  
SPACING SHALL BE A CENTER TO CENTER SPACING OF 1.6" MIN. AND 2.4" MAX AND A BASE TO BASE SPACING OF .65" MIN. MEASURED BETWEEN THE MOST ADJACENT DOMES ON THE GRID.



henderson  
thuckestein  
architects, pc

architecture . planning . interior design  
2126 Morris Avenue  
Birmingham, AL 35203  
Phone (205) 322-1751  
Fax (205) 322-1778  
email info@hplusha.com  
www.hplusha.com

A New Branch Bank for  
**Tyndall**  
FEDERAL CREDIT UNION  
Dothan, Alabama

RELEASES / DESCRIPTION / DATES

NOT FOR CONSTRUCTION   
RELEASED FOR CONSTRUCTION

DATE 06.23.2020  
DRAWN T.T.  
CHECKED DAR  
APPROVED H.H.A.

PROJECT NUMBER 20012.01

SHEET TITLE SECTIONS AND DETAILS

DRAWING NO. C7



CONSULTING ENGINEERS-LAND SURVEYORS  
2500 SOUTHLAKE PARK SUITE 100, HOOVER, AL 35224  
TELEPHONE (205) 320-0114