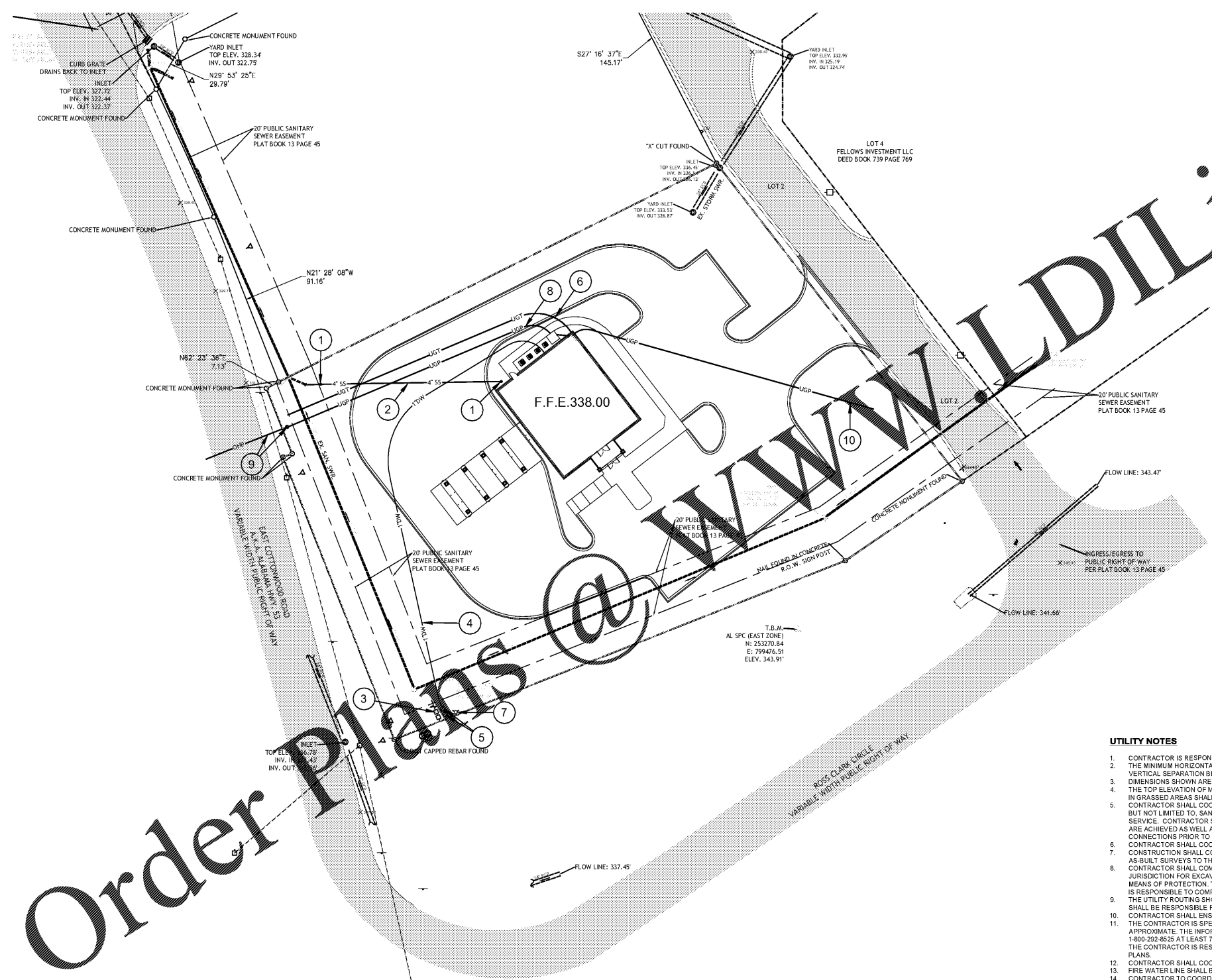
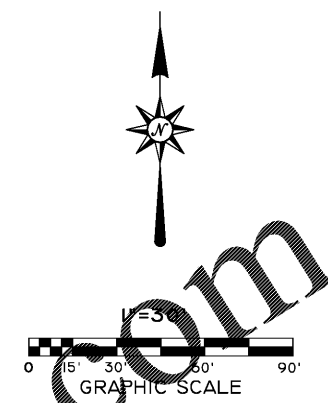




hendon huckestei
architects, p
architecture . planning . interior de
2126 Morris Avenue
Birmingham, AL 35203
Phone (205) 322-1751
Fax (205) 322-1778
email info@hplusha.com
www.hplusha.com



KEY NOTE LEGEND

- 1 SANITARY SEWER CLEAN-OUT REQUIRED. SEE DETAIL - TYPICAL CLEAN OUT MAX SPACING OF 100' C.T.C.
- 2 4" PVC SCHED. 40 SANITARY SEWER SERVICE LATERAL REQUIRED @ 1.0% MIN. GRADE.
- 3 1" IRRIGATION WATER METER AND BACKFLOW PER WATER COMPANY SPECS.
- 4 1.25" PVC SCHED. 40 WATER LINE REQD.
- 5 1" WATER METER AND BACKFLOW PER WATER COMPANY SPECS. 1" WATTS MODEL 007M1QT DOUBLE CHECK VALVE IN BOX WITH LID.
- 6 (2) 2" PVC CONDUITS FOR UNDERGROUND TELEPHONE, AND DATA SERVICE. CONTACT LOCAL UTILITY PROVIDER FOR COORDINATION.
- 7 EXISTING FIRE HYDRANT LOCATION.
- 8 (2) 5" PVC CONDUITS FOR UNDERGROUND POWER SERVICE. CONTACT LOCAL UTILITY PROVIDER FOR COORDINATION.
- 9 PROPOSED NEW POWER POLE AND OVERHEAD SERVICE TO THE SITE RISER DOWN POLE TO TRANSFORMER. CONTRACTOR SHALL CONTACT LOCAL POWER PROVIDER AND COORDINATE AND ASSIST AS NEED TO BRING POWER TO THE SITE AND BUILDING.
- 10 1.5" CONDUIT FROM POWER PANEL TO PRIMARY IDENTIFICATION SIGN REQUIRED.

UTILITY NOTES

1. CONTRACTOR IS RESPONSIBLE FOR REPAIRS TO ANY EXISTING UTILITY DAMAGED DURING CONSTRUCTION AT NO COST TO THE OWNER.
2. THE MINIMUM HORIZONTAL SEPARATION BETWEEN THE CLOSEST TWO POINTS OF THE WATER LINE AND SANITARY SEWER LINE IS 5 FEET, OR MINIMUM VERTICAL SEPARATION BETWEEN THE CLOSEST TWO POINTS OF THE WATER AND SEWER LINE IS 18 INCHES. (WATER LINE ABOVE SEWER LINE)
3. DIMENSIONS SHOWN ARE TO CENTER LINE OF PIPE OR FITTING OR TO CENTER LINE OF MANHOLE.
4. THE TOP ELEVATION OF MANHOLES CONSTRUCTED IN PAVED AREAS SHALL MATCH FINISH GRADE. THE TOP ELEVATION OF MANHOLES CONSTRUCTED IN GRASSY AREAS SHALL BE 6 INCHES ABOVE FINISHED GRADE. (UNLESS OTHERWISE NOTED).
5. CONTRACTOR SHALL COORDINATE WITH ARCHITECTURAL & MEP PLANS FOR ACTUAL NUMBER AND LOCATION OF ALL UTILITY ENTRANCES TO INCLUDE, BUT NOT LIMITED TO, SANITARY SEWER LATERALS, DOMESTIC AND FIRE PROTECTION WATER SERVICE, SITE ELECTRICAL, TELEPHONE AND GAS SERVICE. CONTRACTOR SHALL COORDINATE INSTALLATION OF UTILITIES IN SUCH A MANNER AS TO AVOID CONFLICTS AND ASSURE PROPER DEPTHS ARE ACHIEVED AS WELL AS COORDINATING WITH CITY AND UTILITY COMPANY REQUIREMENTS AS TO LOCATION AND SCHEDULING OF TIE-INS AND CONNECTIONS PRIOR TO CONNECTING TO EXISTING UTILITIES.
6. CONTRACTOR SHALL COORDINATE UTILITY INSPECTION WITH APPROPRIATE AUTHORITIES PRIOR TO COVERING TRENCHES AT INSTALLATION.
7. CONSTRUCTION SHALL COMPLY WITH ALL GOVERNING CODES AND REQUIREMENTS. THE CONTRACTOR SHALL CONDUCT ALL REQUIRED TESTS AND AS-BUILT SURVEYS TO THE SATISFACTION OF THE UTILITY COMPANIES AND OWNER'S INSPECTING AUTHORITIES.
8. CONTRACTOR SHALL COMPLY TO THE FULLEST EXTENT WITH THE LATEST STANDARDS OF OSHA DIRECTIVES OR ANY OTHER AGENCY HAVING JURISDICTION FOR EXCAVATION AND TRENCHING PROCEDURES. THE CONTRACTOR SHALL USE SUPPORT SYSTEMS, SLOPING, BENCHING, AND OTHER MEANS OF PROTECTION. THIS IS TO INCLUDE BUT IS NOT LIMITED TO ACCESS AND EGRESS FROM ALL EXCAVATION AND TRENCHING. THE CONTRACTOR IS RESPONSIBLE TO COMPLY WITH PERFORMANCE CRITERIA FOR OSHA.
9. THE UTILITY ROUTING SHOWN ON THIS PLAN IS A RESULT OF COORDINATION EFFORTS WITH LOCAL UTILITY AUTHORITIES. HOWEVER, THE CONTRACTOR SHALL BE RESPONSIBLE FOR COORDINATING FINAL UTILITY LOCATIONS WITH THE LOCAL GOVERNING UTILITY AUTHORITIES.
10. CONTRACTOR SHALL ENSURE THAT UTILITIES TO ADJOINING PROPERTIES ARE NOT DISRUPTED AND SHALL ADJUST SERVICES AS NECESSARY.
11. THE CONTRACTOR IS SPECIFICALLY CAUTIONED THAT THE LOCATION AND/OR ELEVATION OF EXISTING UTILITIES AS SHOWN ON THESE PLANS ARE APPROXIMATE. THE INFORMATION IS NOT TO BE RELIED ON AS BEING EXACT OR COMPLETE. THE CONTRACTOR MUST CALL ALABAMA ONE CALL 1-800-292-8625 AT LEAST 72 HOURS BEFORE ANY EXCAVATION TO REQUEST EXACT FIELD LOCATION OF UTILITIES. IT SHALL BE THE RESPONSIBILITY OF THE CONTRACTOR IS RESPONSIBLE TO RELOCATE ALL EXISTING UTILITIES WHICH CONFLICT WITH THE PROPOSED IMPROVEMENTS SHOWN ON THE PLANS.
12. CONTRACTOR SHALL COORDINATE WITH ALL UTILITIES TO ASSURE PROPER DEPTH AND PREVENT ANY CONFLICT OF UTILITIES.
13. FIRE WATER LINE SHALL BE DUCTILE IRON PIPE AND SHALL COMPLY WITH CITY UTILITIES SPECIFICATIONS.
14. CONTRACTOR TO COORDINATE WATER LINE INSTALLATION WITH CITY UTILITIES. ALL METERS, VAULTS, BACKFLOW DEVICES, PIPES, FITTINGS, VALVES AND APPURTENANCES SHALL MEET CITY UTILITIES SPECIFICATIONS.
15. CONTRACTOR SHALL INSTALL SANITARY SEWER CLEAN-OUT WITHIN 30' FROM BUILDING FACE, AT EACH BEND AND EVERY 80' O.C. (MAX) FOR ALL LATERALS EXITING BUILDING.
16. ALL UTILITY COVERS (RUBBER BOXES, LIDS, MANHOLE COVERS, ACCESS HATCHES, ETC.) THAT ARE INSTALLED IN PAVED AREAS SHALL BE TRAFFIC-BEARING (H-20 LOAD RATED) AND BE ADJUSTED TO FINISH GRADE.

Order Plans @ WWW.LDILine.com

NOTE:
AS A FIRST ORDER OF BUSINESS THE CONTRACTOR SHALL LOCATE THE EXISTING SANITARY SEWER SERVICE LATERAL AND PROVIDE THE ENGINEER OF RECORD WITH THE INVERT ELEVATION, PIPE SIZE AND CONDITION OF THE PIPE.

NOTE:
CONTRACTOR IS RESPONSIBLE FOR PROVIDING BURIED ELECTRICAL CONDUITS FROM ALL SIGNS, LIGHT STANDARDS, OR OTHER EXTERIOR ELECTRICAL DEVICES ON-SITE TO ELECTRICAL PANEL IN BUILDING. REF. ELECTRICAL PLANS.

NOTE:
CONTRACTOR SHALL COORDINATE ALL PROPOSED ON-SITE CONDUIT ROUTING FOR TELEPHONE, POWER AND CABLE TV SERVICE WITH THE UTILITY COMPANIES. CONTRACTOR SHALL BE RESPONSIBLE FOR INSTALLING ANY APPURTENANCES THAT ARE REQUIRED.



CONSULTING ENGINEERS-LAND SURVEYORS
2500 SOUTHLAKE PARK SUITE 100, HOOPER, AL 35244
TELEPHONE: (205) 320-0114

RELEASES / DESCRIPTION / DATES	
NOT FOR CONSTRUCTION	
RELEASED FOR CONSTRUCTION	
DATE	06.23
DRAWN	
CHECKED	
APPROVED	H
PROJECT NUMBER	20012
SHEET TITLE	UTILITY PLAN
DRAWING NO.	C6

A New Branch Bank for
Tyndall
FEDERAL CREDIT UNION
Nathan Alabama