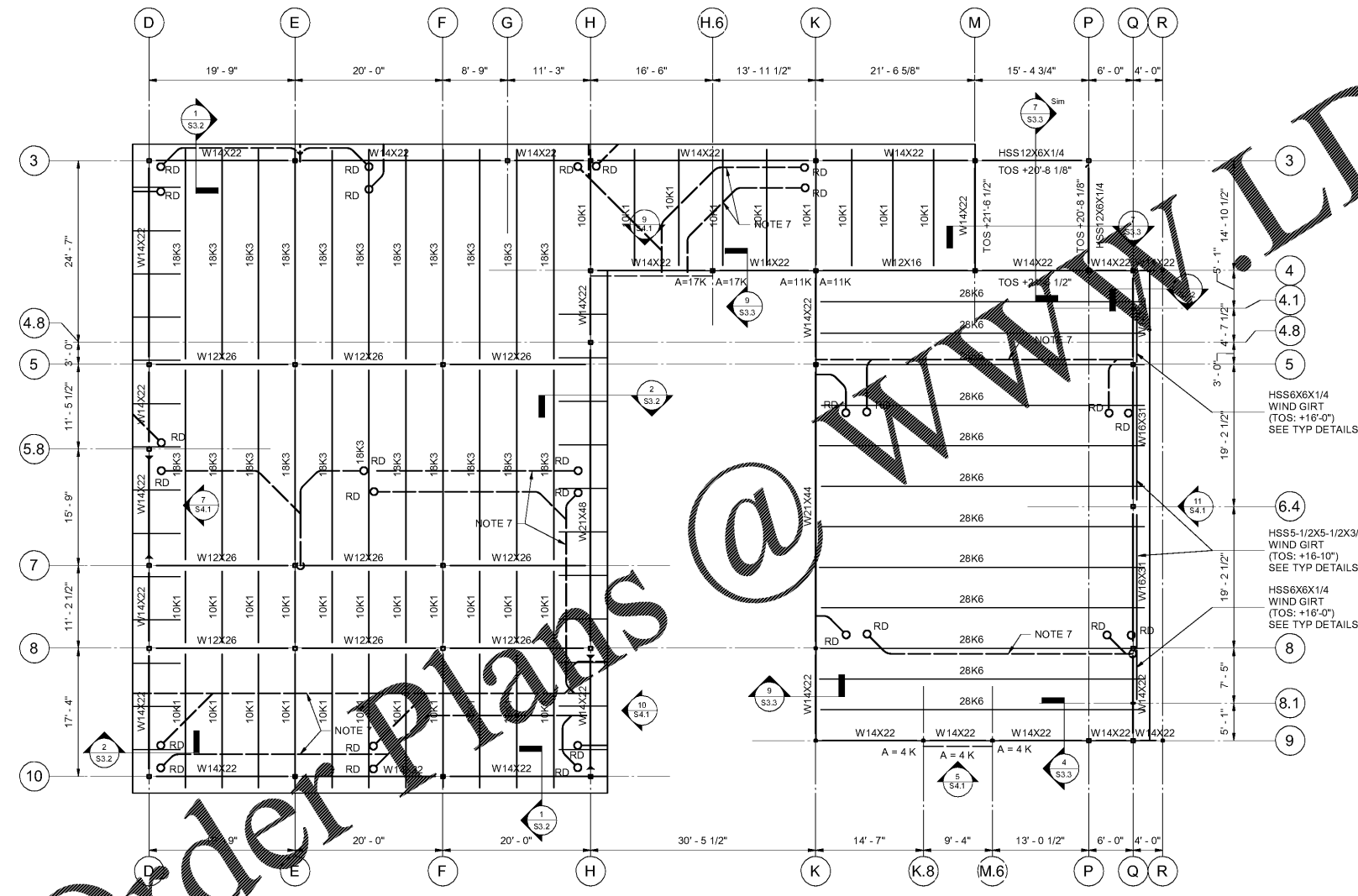


Tower Roof Framing Plan
 1/8" = 1'-0"

1. TOP OF STEEL JOIST BEARING REFERENCED FROM FIRST LEVEL FINISH FLOOR +3'-0" UNLESS NOTED, SEE PLAN.
2. SEE S2.2 FOR ADDITIONAL PLAN NOTES.



High Roof Framing Plan
 1/8" = 1'-0"

1. TOP OF STEEL JOIST BEARING REFERENCED FROM FIRST LEVEL FINISH FLOOR +21'-4" UNLESS NOTED, SEE PLAN.
2. SEE S2.2 FOR ADDITIONAL PLAN NOTES.

Order Plans @

WWW.LDILINE.COM

**NEW LIBRARY
 FOR THE CITY OF OPELIKA**
 GLENN STREET
 OPELIKA, ALABAMA 36601



SHEET TITLE:
 HIGH ROOF FRAMING PLAN

PROJ. MGR.: AC
DRAWN: MBJ
DATE: JUNE 1, 2020
CHECKED BY: BRH
REVISIONS
Description Date

JOB NO. 19-32
 SHEET NO.

S2.3
 13 OF 18

SEQUENCE NO.
 61 / 90

