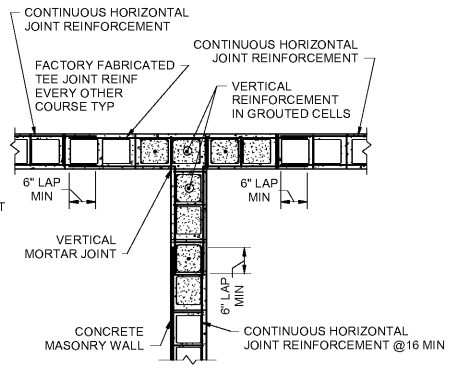
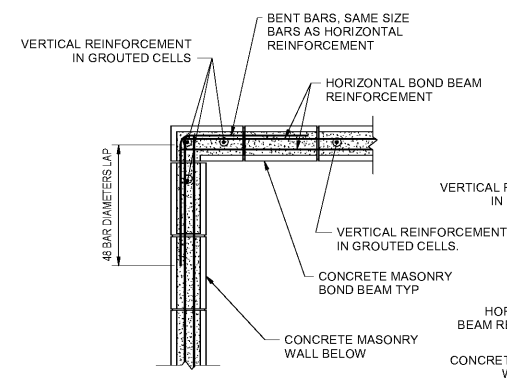


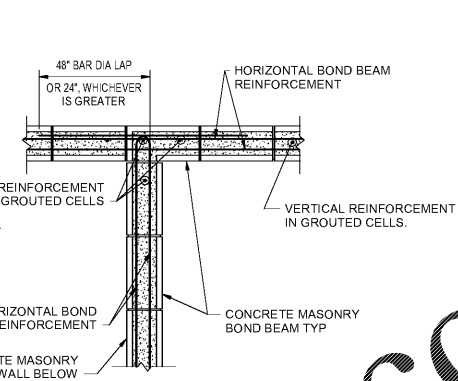
Plan Showing Joint Reinforcement at Wall Corner



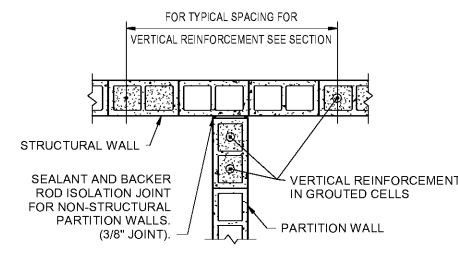
Plan Showing Joint Reinforcement at Structural Wall Intersection



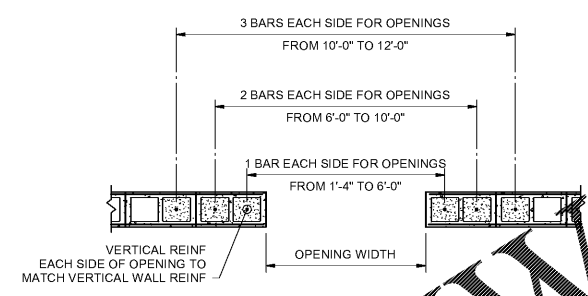
Plan Showing Bond Beam Reinforcement at Wall Corner



Plan Showing Bond Beam Reinforcement at Structural Wall Intersection



Partition Walls Abutting Structural Walls

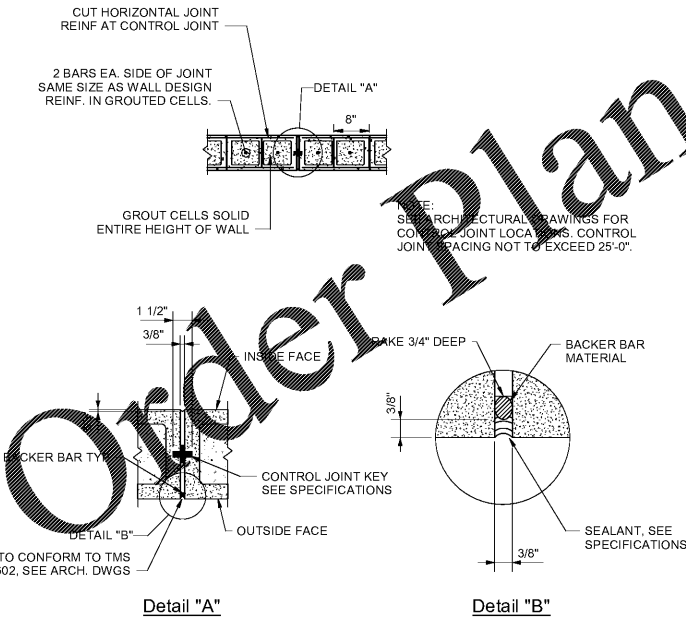


CMU Wall Opening Detail

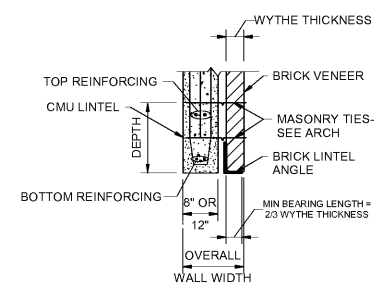
Masonry Tension Lap Splice Lengths

Size	f _m = 2000		
	8" CMU	12" CMU	2" COVER
#3	18"	18"	18"
#4	18"	18"	22"
#5	20"	18"	35"
#6	38"	24"	64"
#7	52"	33"	67"
#8	79"	50"	131"
#9	-	64"	167"

1. THIS TABLE CONTAINS DEVELOPMENT AND SPLICE LENGTHS FOR REINFORCEMENT IN CMU ACCORDING TO ACI 530-13/ TMS 402-13/ASCE 5-13.
 2. VALUES FOR 8" AND 12" CMU TO BE USED FOR BARS CENTERED IN WALL. VALUES FOR 2" COVER TO BE USED FOR DOUBLY REINFORCED WALLS AND BOND BEAMS/LINTELS W/ (2) BARS IN A SINGLE LAYER.
 3. FOR DEVELOPMENT AND SPLICE LENGTHS OF EPOXY COATED BARS, MULTIPLY TABULATED VALUES BY 1.5.
 4. WHERE VERTICAL BAR IS INTERRUPTED BY A BEARING PLATE OR OTHER OBSTRUCTION, PROVIDE BACK DOWEL MATCHING VERTICAL REINFORCEMENT W/ 8" MAXIMUM OFFSET.



Masonry Control Joint

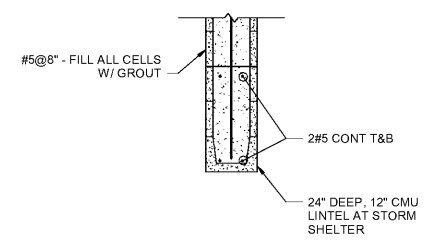


Masonry Lintel Schedule

MAXIMUM OPENING WIDTH	BRICK LINTEL ANGLE (LLH)	DEPTH	CMU LINTEL DIMENSIONS AND REINFORCING	
			8" WALL	12" WALL
2'-0"	L3 1/2x3 1/2x3/8	8	1#4 BOT	1#4 BOT
4'-0"	L3 1/2x3 1/2x3/8	8	1#4 BOT	2#4 BOT
6'-0"	L3 1/2x3 1/2x3/8	8	1#5 BOT & 1#4 TOP	2#5 BOT & 2#4 TOP
8'-0"	L5x3 1/2x3/8	16	1#6 BOT & 1#5 TOP	2#5 BOT & 2#4 TOP
10'-0"	---	16	1#7 BOT & 1#5 TOP	2#6 BOT & 2#4 TOP
12'-0"	---	16	1#8 BOT & 1#5 TOP	2#7 BOT & 2#5 TOP

1. DO NOT USE THIS SCHEDULE IF CONCENTRATED LOAD IS APPLIED TO THE LINTEL AT A HEIGHT LESS THAN HALF THE SPAN ABOVE THE LINTEL, OR IF STACK BOND IS SPECIFIED.
 2. PROVIDE 8" MINIMUM BEARING FOR ALL LINTELS. FOR LINTELS GREATER THAN 8'-0" FILL CELLS SOLID AT EACH SIDE OF OPENING.
 3. DO NOT USE THE CMU LINTEL SHOWN FOR STORM SHELTER, SEE STORM SHELTER LINTEL DETAIL.

Masonry Lintel Detail and Schedule



Storm Shelter Lintel

NEW LIBRARY FOR THE CITY OF OPELIKA
 GLENN STREET
 OPELIKA, ALABAMA 36601



SHEET TITLE:
 TYPICAL DETAILS

PROJ. MGR.: AC
 DRAWN: MBJ
 DATE: JUNE 1, 2020
 CHECKED BY: BRH

REVISIONS	#	Description	Date

JOB NO. 19-32
 SHEET NO. S1.2
 8 OF 18
 SEQUENCE NO. 56 / 90

