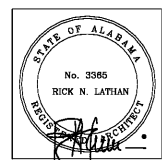




LATHAN ASSOCIATES  
ARCHITECTS, P.C.  
300 CHASE PARK SOUTH  
SUITE 202 HOUSTON, ALABAMA 35244  
PH 205-988-9112 FAX 205-988-9186

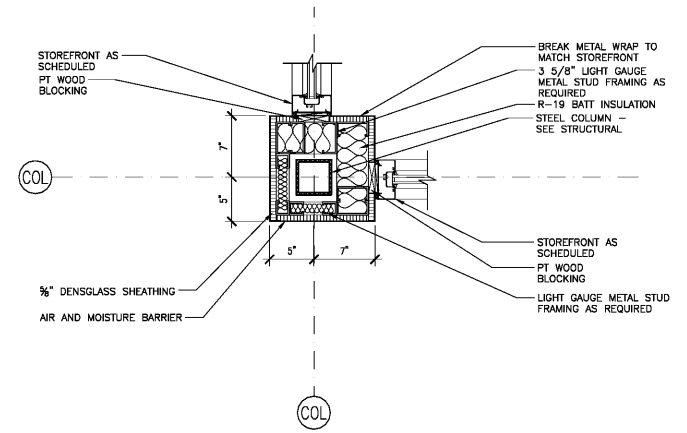
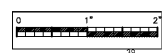
NEW PUBLIC LIBRARY  
FOR THE CITY OF OPELIKA  
GLENN STREET  
OPELIKA, ALABAMA 36801



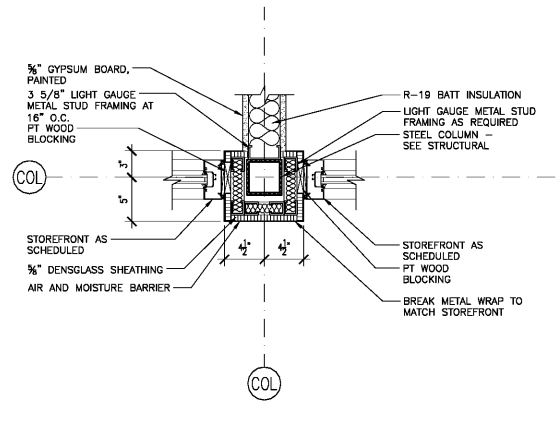
SHEET TITLE:  
PLAN DETAILS

PROJ. MGR.: S. CALMA  
DRAWN: TSS  
DATE: JUNE 01, 2020  
CHECKED BY:  
REVISIONS:

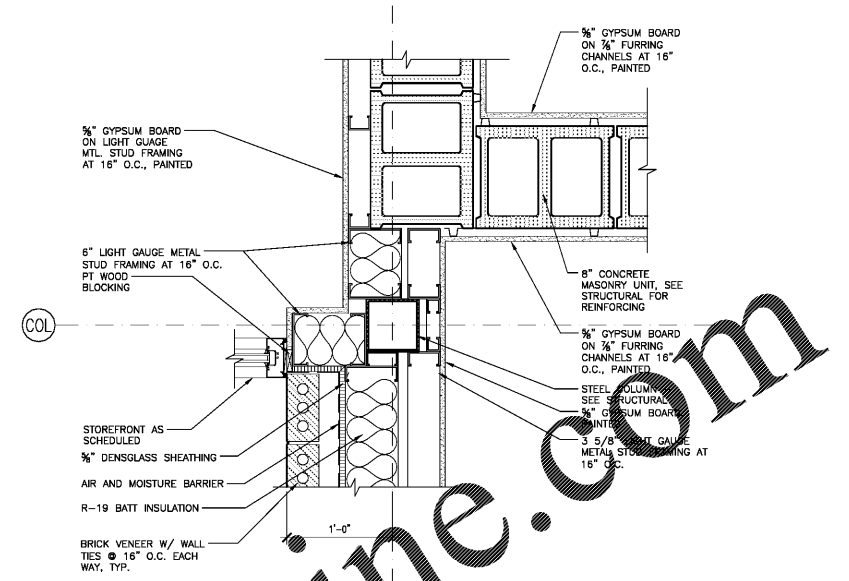
JOB NO. 19-32  
SHEET NO.  
**A3.4.1**  
28 OF 37  
SEQUENCE NO:  
39 / 90



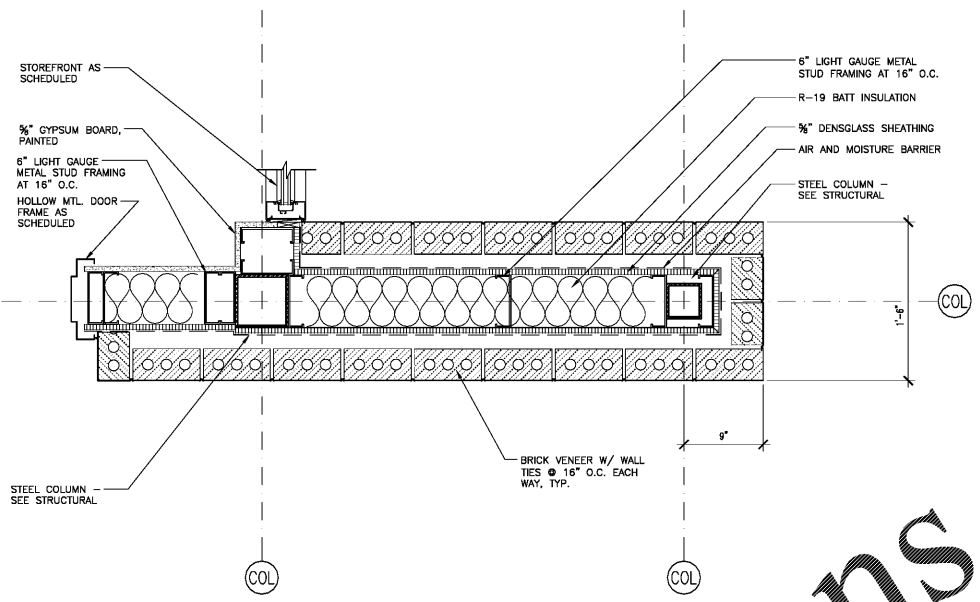
**1 DETAIL**  
SCALE: 1 1/2" = 1'-0"



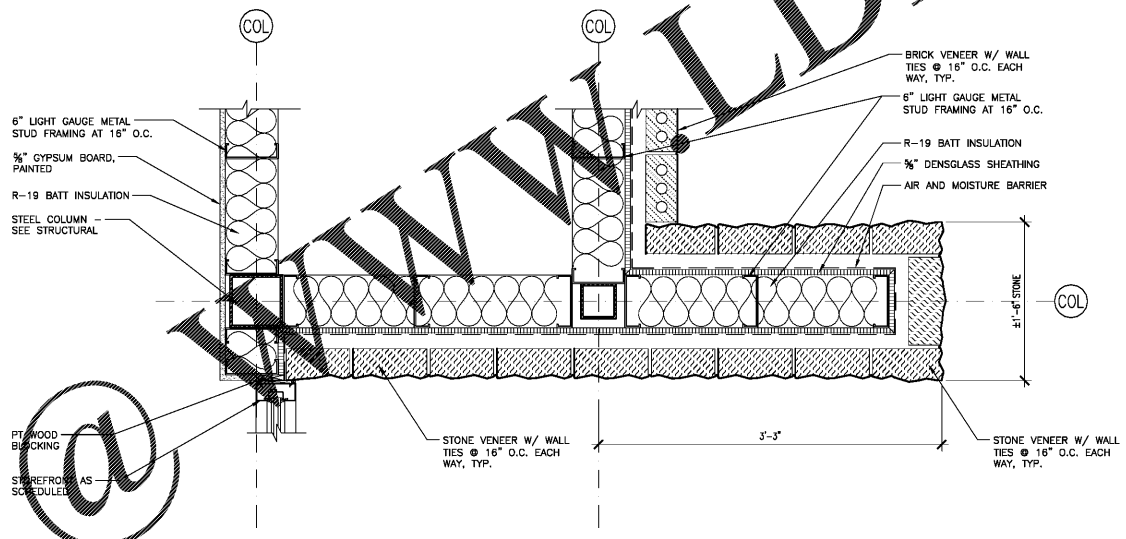
**2 DETAIL**  
SCALE: 1 1/2" = 1'-0"



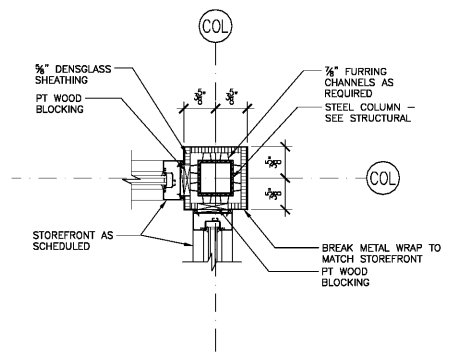
**3 DETAIL**  
SCALE: 1 1/2" = 1'-0"



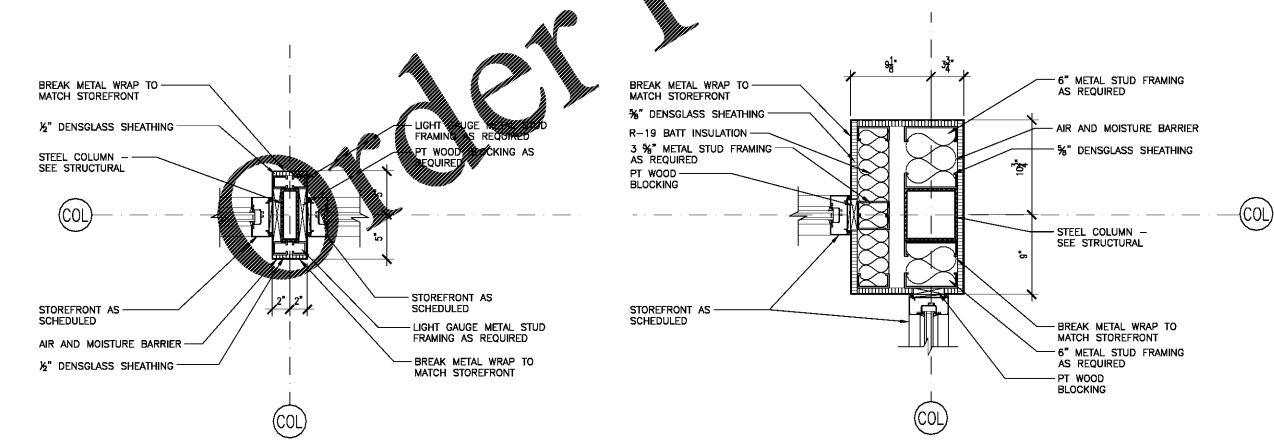
**4 DETAIL**  
SCALE: 1 1/2" = 1'-0"



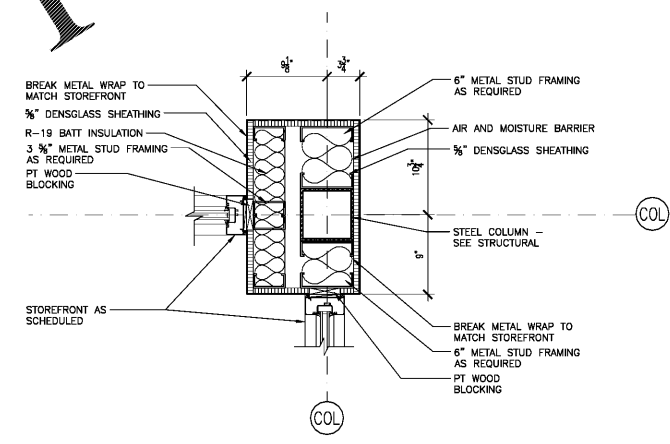
**5 DETAIL**  
SCALE: 1 1/2" = 1'-0"



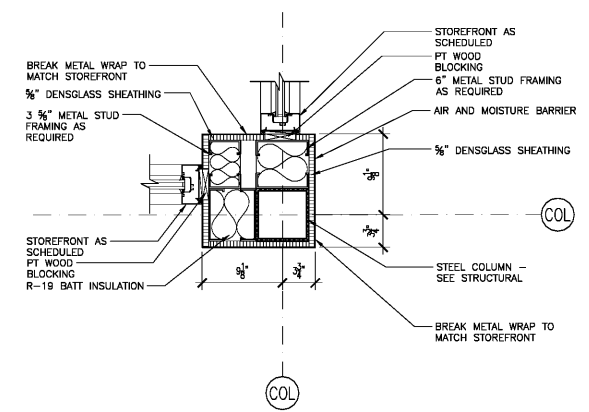
**9 DETAIL**  
SCALE: 1 1/2" = 1'-0"



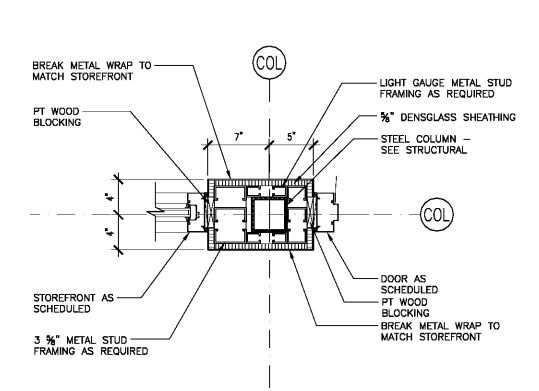
**6 DETAIL**  
SCALE: 1 1/2" = 1'-0"



**7 DETAIL**  
SCALE: 1 1/2" = 1'-0"



**8 DETAIL**  
SCALE: 1 1/2" = 1'-0"



**10 DETAIL**  
SCALE: 1 1/2" = 1'-0"

Order Plans

www.LDILine.com