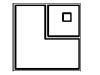
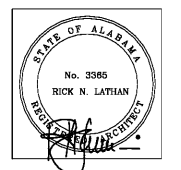


NOTE
REFER TO NOTE ON SHEET A3.1.3 FOR EXTERIOR MOCK-UP DETAIL REQUIREMENTS.



LATHAN ASSOCIATES ARCHITECTS, P.C.
300 CHASE PARK SOUTH
SUITE 202 - HOUSTON, ALABAMA 35244
PH: 205-888-9112 FAX: 205-888-9186

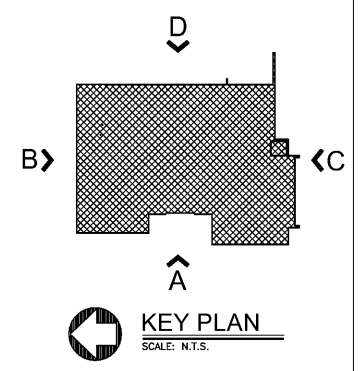
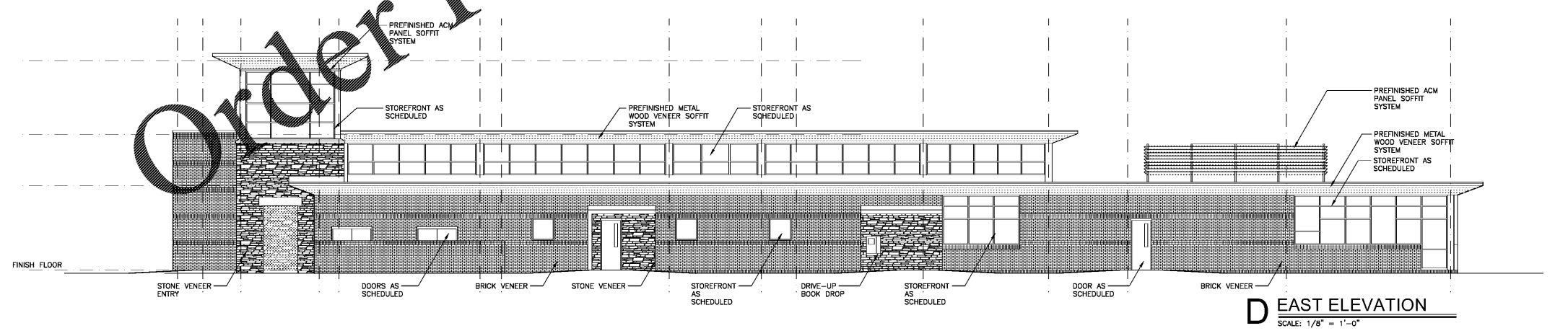
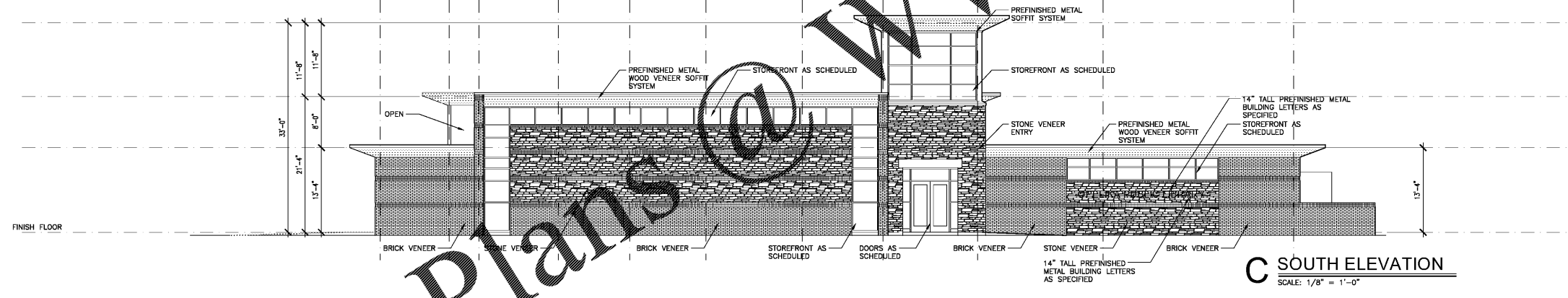
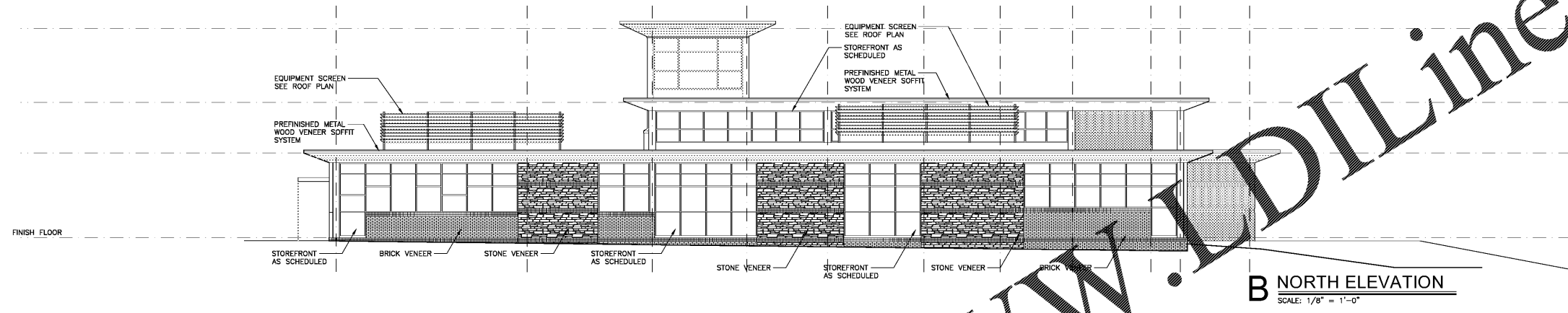
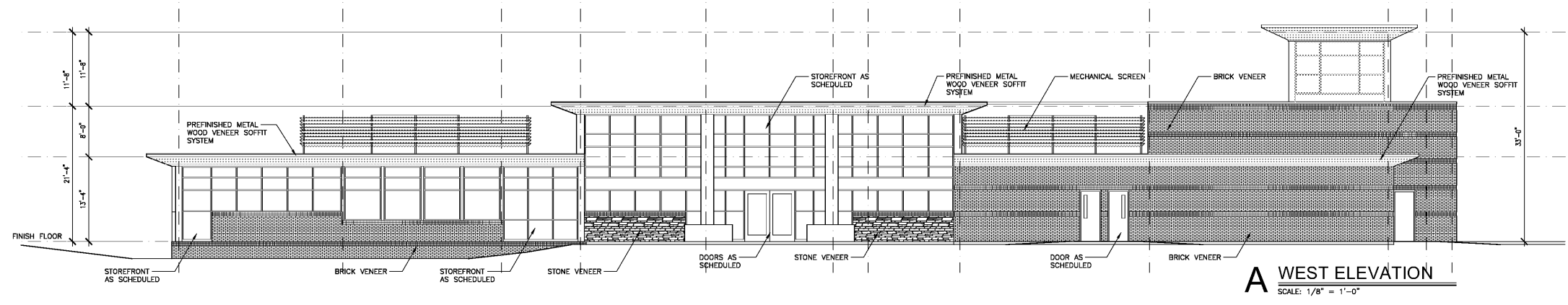
NEW PUBLIC LIBRARY FOR THE CITY OF OPELIKA
GLENN STREET
OPELIKA, ALABAMA 36801



SHEET TITLE:
EXTERIOR ELEVATIONS

PROJ. MGR.: S. CALMA
DRAWN: TSS
DATE: JUNE 01, 2020
CHECKED BY:
REVISIONS:

JOB NO. 19-32
SHEET NO. **A3.1.1**
18 OF 37
SEQUENCE NO. 29 / 90



Order Plans @ WWW.ArchLine.com