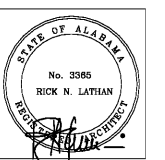


LATHAN ASSOCIATES
ARCHITECTS, P.C.
300 CHASE PARK SOUTH
SUITE 200 HOUSTON, ALABAMA 35244
PH 205-988-9112 FAX 205-988-9198

NEW PUBLIC LIBRARY
FOR THE CITY OF OPELIKA
GLENN STREET
OPELIKA, ALABAMA 36801



SHEET TITLE:
DOOR AND STOREFRONT
SCHEDULES

PROJ. MGR.: S. CALMA
DRAWN: K. WOOD
DATE: JUNE 01, 2020
CHECKED BY:
REVISIONS:

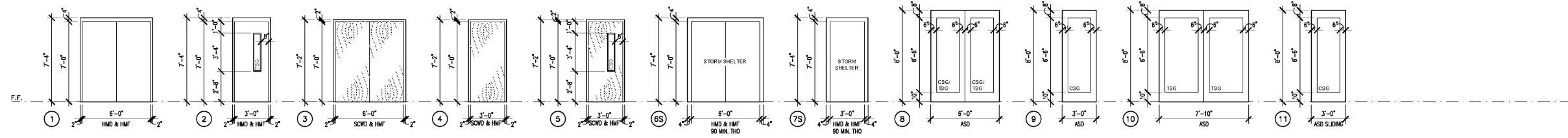
JOB NO. 19-32

SHEET NO:

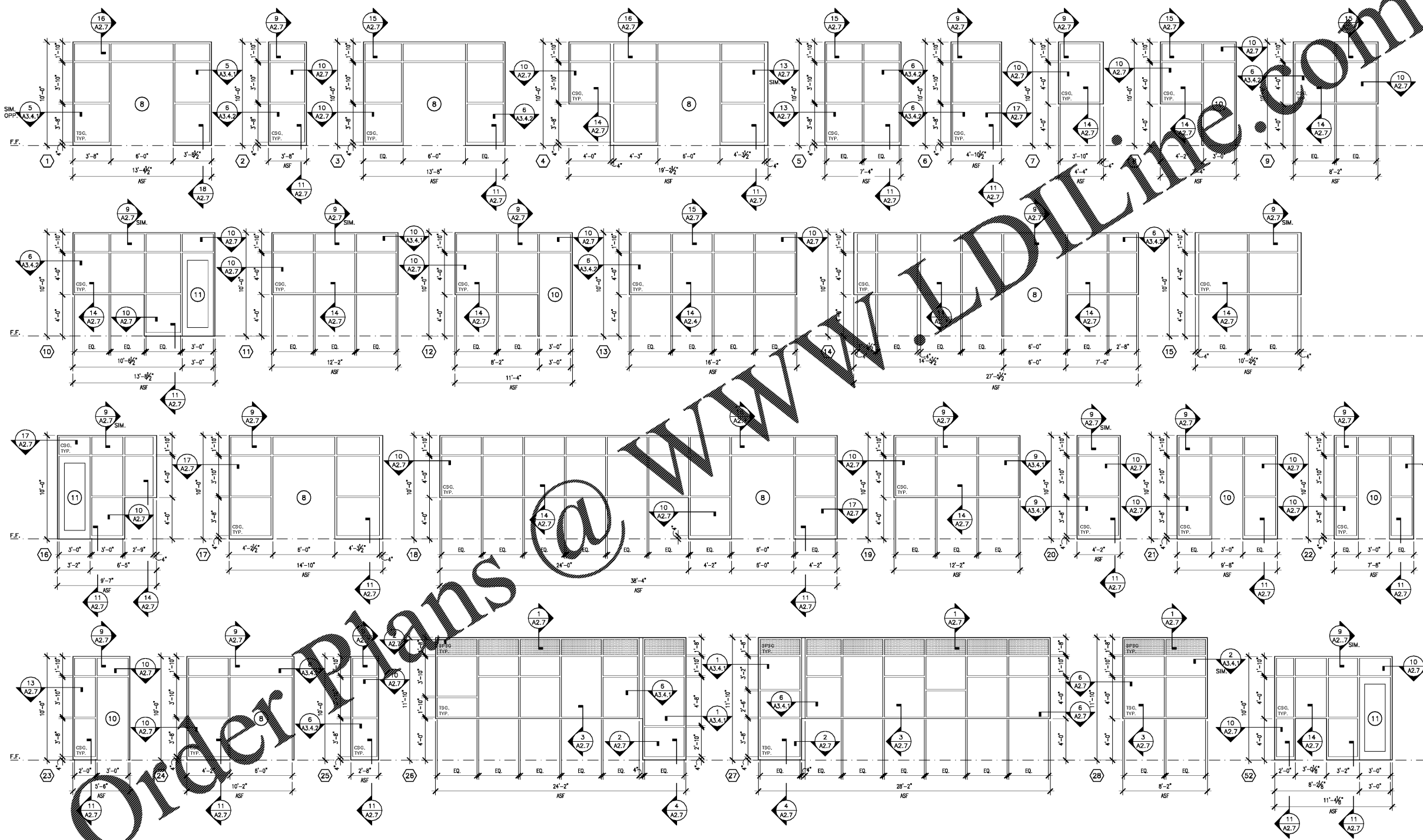
A2.4

12 OF 37

SEQUENCE NO:
23 / 90



1 DOOR SCHEDULE
SCALE: 1/4" = 1'-0"



2 STOREFRONT SCHEDULE
SCALE: 1/4" = 1'-0"

DOOR AND STOREFRONT LEGEND	
CSG	2" THICK CLEAR TEMPERED SAFETY GLASS
CR	ACCESS CONTROLS CARD READER
TBG	1" TINTED INSULATED LOW-E TEMPERED SAFETY GLASS AS SPEC.
SCWD	SOLID CORE WOOD DOOR
HMD	HOLLOW METAL DOOR
HMF	HOLLOW METAL FRAME
ASE	PREFINISHED ALUMINUM STOREFRONT ENTRANCE SYSTEM AS SPECIFIED.
ASF	PREFINISHED ALUMINUM STOREFRONT FRAME SYSTEM AS SPECIFIED.
SPSG	1" SPANREL INSULATED TEMPERED SAFETY GLASS AS SPECIFIED.
THO	TORNADO STORM SYSTEM WITH MECHANICAL HOLD OPENS

Order Plans

WWW.DIPLINE.COM