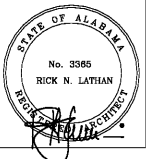


LATHAN ASSOCIATES
ARCHITECTS, P.C.
300 CHASE PARK SOUTH
SUITE 200 - HOUSTON, ALABAMA 35244
PH: 205-988-9112 FAX: 205-988-9186

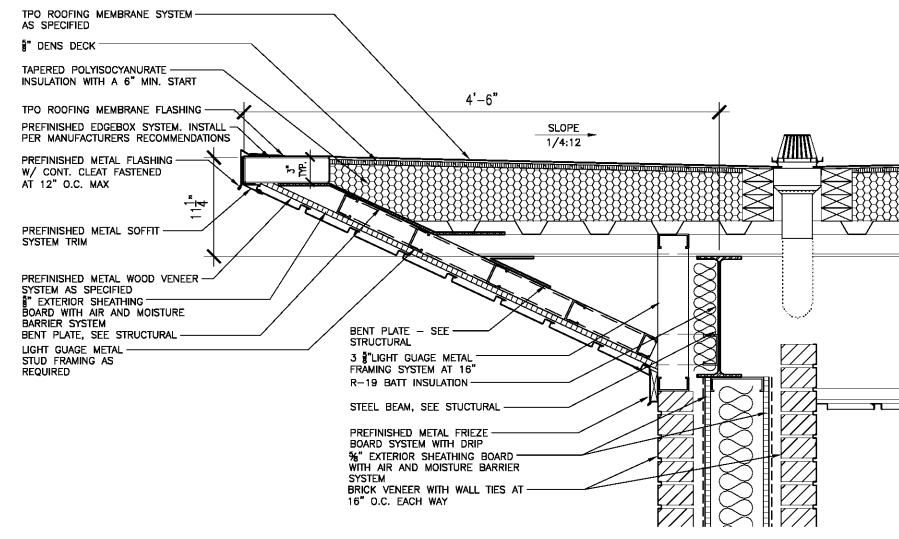
NEW PUBLIC LIBRARY
FOR THE CITY OF OPELIKA
GLENN STREET
OPELIKA, ALABAMA 36801



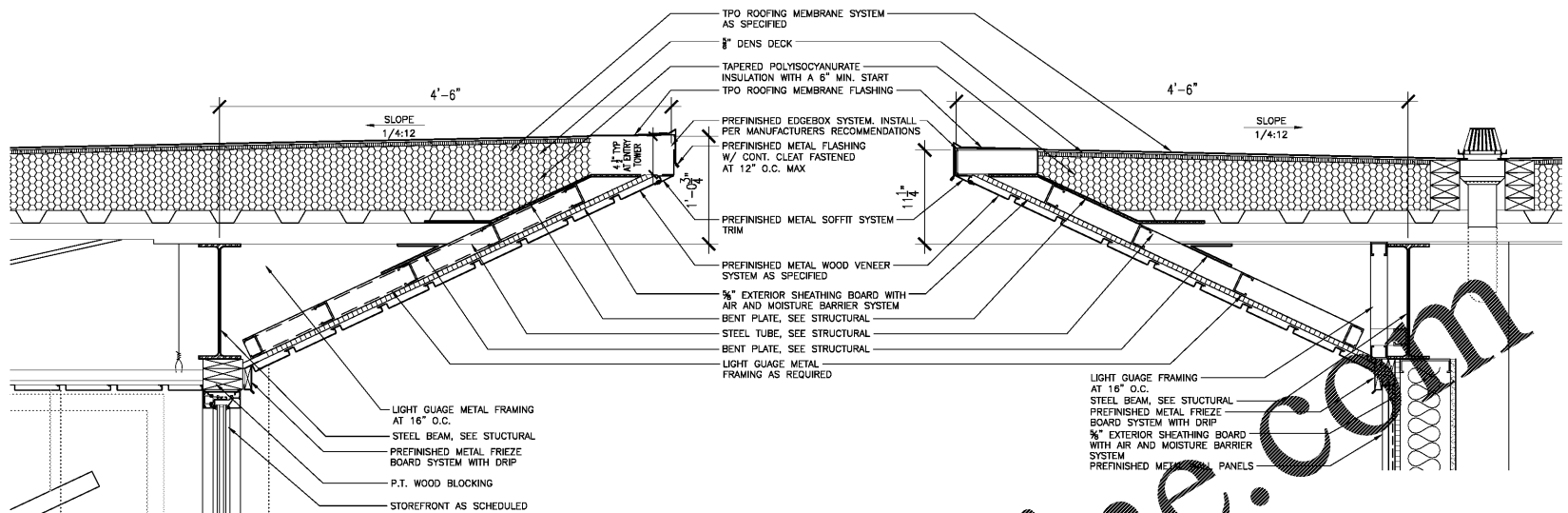
SHEET TITLE:
ROOF DETAILS

PROJ. MGR.: S. CALMA
DRAWN: S.W.
DATE: JUNE 01, 2020
CHECKED BY:
REVISIONS:

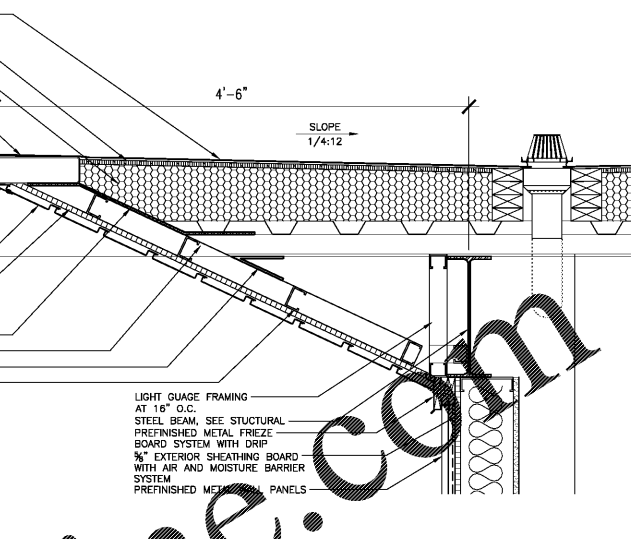
JOB NO. 19-32
SHEET NO:
A1.3.4
8 OF 37
SEQUENCE NO:
19 / 90



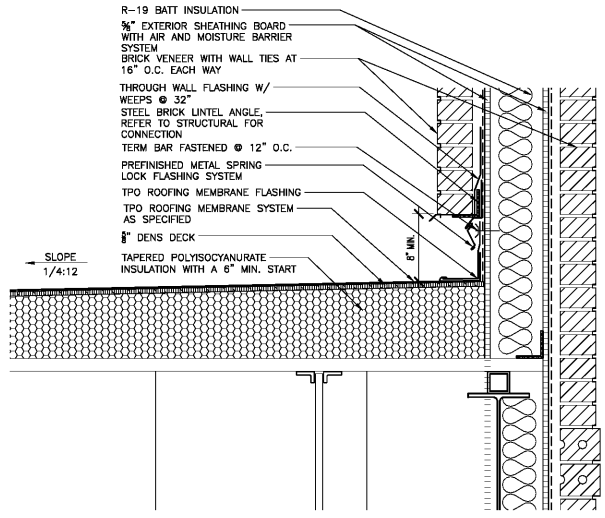
1 HIGH ROOF DETAIL
1 1/2" = 1'-0"



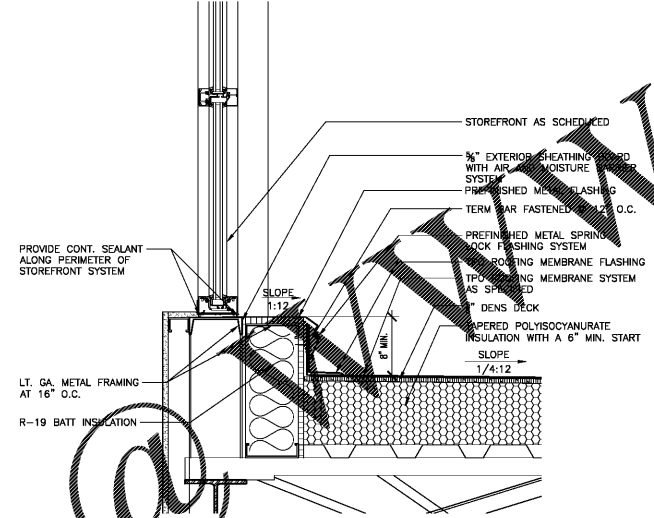
3 HIGH ROOF DETAIL
1 1/2" = 1'-0"



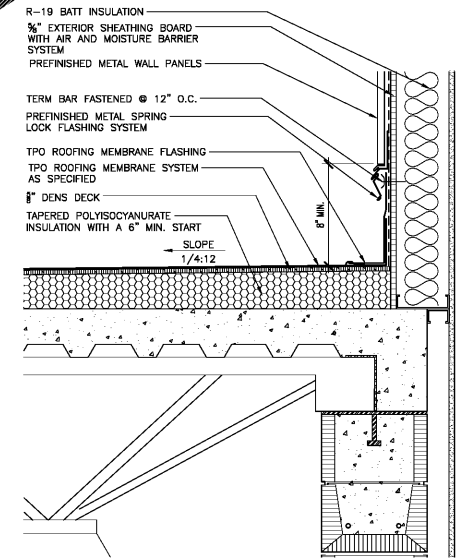
5 HIGH ROOF DETAIL
1 1/2" = 1'-0"



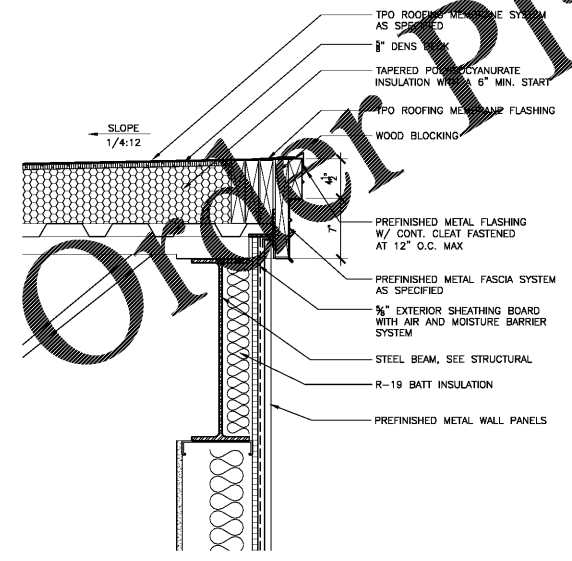
2 HIGH TO LOW ROOF DETAIL
1 1/2" = 1'-0"



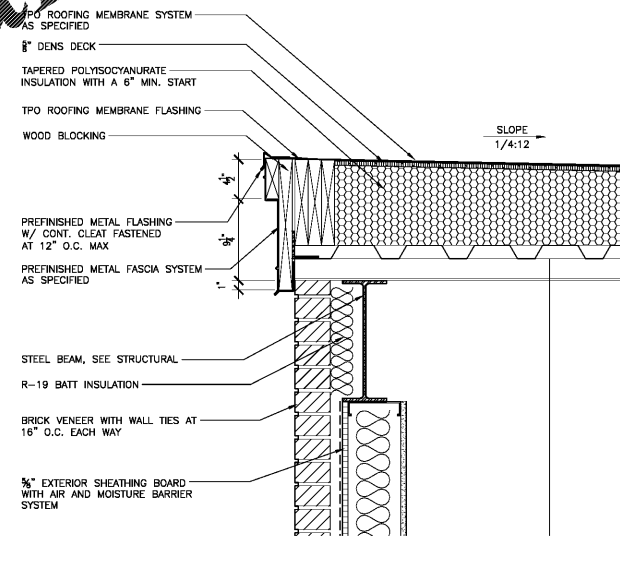
4 HIGH TO LOW ROOF DETAIL
1 1/2" = 1'-0"



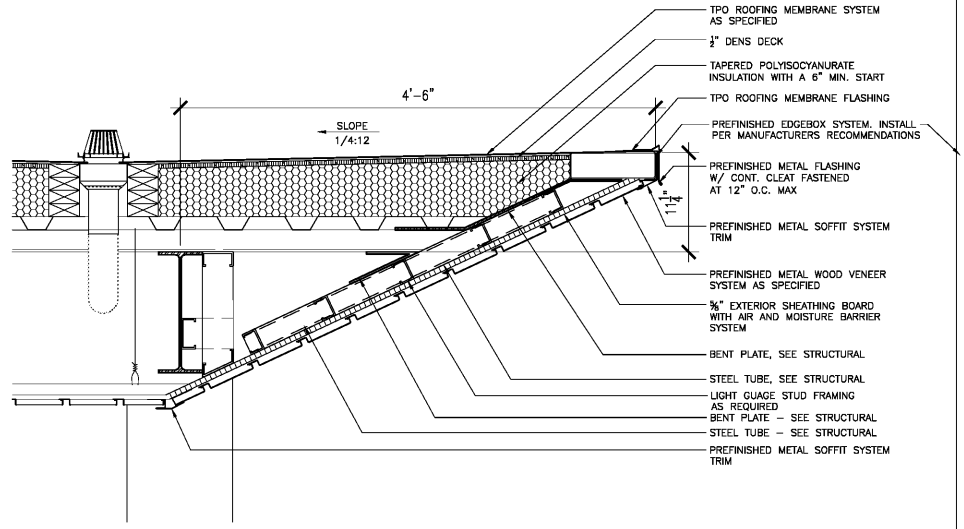
6 HIGH TO LOW ROOF DETAIL
1 1/2" = 1'-0"



7 ROOF DETAIL
1 1/2" = 1'-0"



8 ROOF DETAIL
1 1/2" = 1'-0"



9 ROOF DETAIL
1 1/2" = 1'-0"

Order Plans @ www.ldilina.com