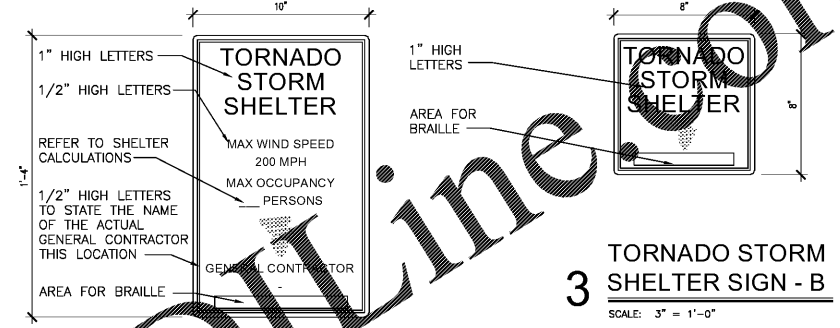


SHELTER LEGEND	
LOCATION	DOOR TYPE
	90 MINUTE TORNADO IMPACT RATED DOOR AND FRAME
	TORNADO IMPACT RATED WINDOW
2 HR FIRE BARRIER	

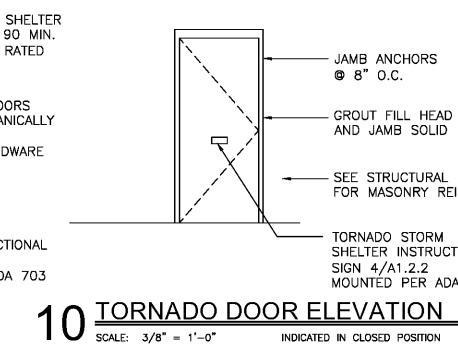
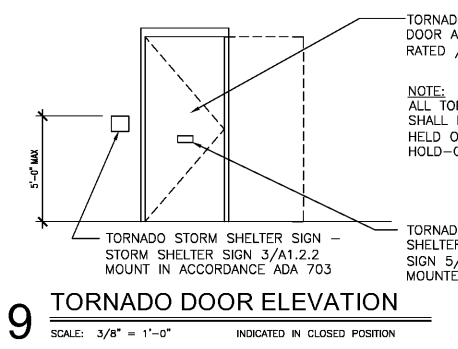
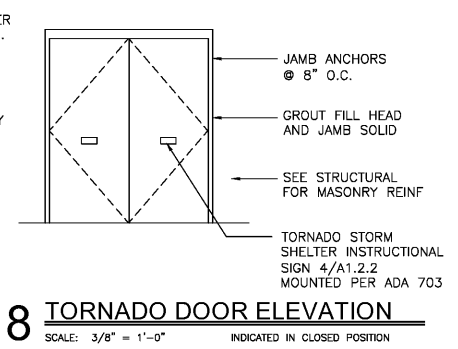
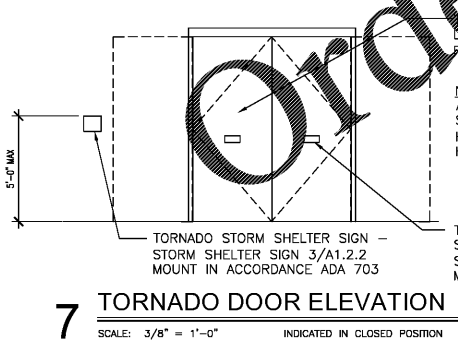
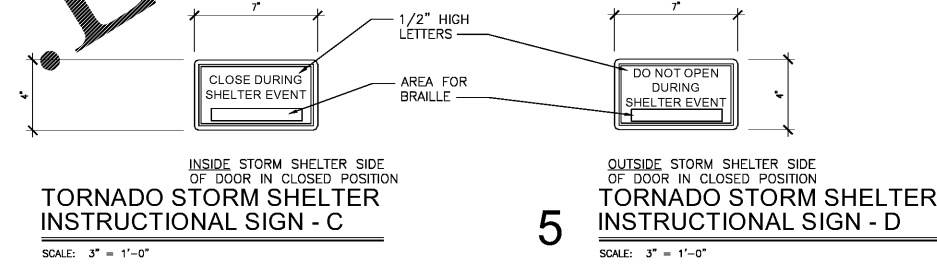
SHELTER SIGN LEGEND	
SYMBOL	DESCRIPTION
A	SIGN TYPE WALL MOUNTED PER ADA 703
.	SEE DOOR ELEVATIONS FOR TYPE
FAK	FIRST AID KIT

TORNADO STORM SHELTER CALCULATION 2014 ICC 500	
PROVIDED USEABLE SHELTER FLOOR AREA:	HALL 111 - 201 S.F. (100% USEABLE) MEETING ROOM 110 - 591 S.F. - 35% = 384.15 S.F. TOTAL USEABLE PROVIDED = 585.15 S.F.
CAPACITY OF STORM SHELTER:	116 : 115(5) + 1 WHEELCHAIR (10) = 585 S.F.
ACTUAL USEABLE CAPACITY OF STORM SHELTER DUE TO SANITATION FACILITIES PROVIDED:	50 PERSONS MAX
NOTE: 1. ALL PENETRATIONS 2" OR GREATER MUST BE PROTECTED WITH A STORM SHELTER BAFFLE OR STORM SHELTER LOUVER SYSTEM. SEE ENGINEER FOR CONDITIONS AND DETAILS. 2. PROVIDE A COLD JOINT AT ALL AREAS WHERE STORM SHELTER SLAB MEETS THE NORMAL SLAB CONDITION, SEE STRUCTURAL. 3. ALL SIGNS SHALL BE IN ACCORDANCE WITH 2010 ADA STANDARD. VERIFY EXACT PLACEMENT WITH ARCHITECT PRIOR TO INSTALLATION.	
TABLE 702.2 - SANITATION FACILITIES	
REQUIRED SANITATION FACILITIES COMMUNITY TORNADO STORM SHELTER > 50 CAPACITY OF SHELTER IS 115 PERSONS	
2 TOILET FIXTURES FIRST 500 + 1 FOR EACH ADDITIONAL 500	
1 PER 1000 OCCUPANTS = 1 HANDWASHING FACILITIES	
REQUIRED TOILET FACILITIES	2
PROVIDED TOILET FACILITIES	1
REQUIRED LAVATORIES	1
PROVIDED LAVATORIES	1
PROVIDED WATER FOUNTAINS	2

**1 TORNADO SHELTER PLAN**  
SCALE: 3/32" = 1'-0"

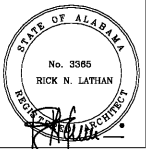


**3 TORNADO STORM SHELTER PLAQUE - A**  
SCALE: 3" = 1'-0"



LATHAN ASSOCIATES ARCHITECTS, P.C.  
300 CHASE PARK SOUTH  
SUITE 202 HOUSTON, ALABAMA 35244  
PH: 205-988-9112 FAX: 205-988-9196

NEW PUBLIC LIBRARY FOR THE CITY OF OPELIKA  
GLENN STREET  
OPELIKA, ALABAMA 36801



SHEET TITLE:  
TORNADO SHELTER PLAN

PROJ. MGR.: S. CALMA  
DRAWN: H. RASCO  
DATE: JUNE 01, 2020  
CHECKED BY:  
REVISIONS:

JOB NO. 19-32  
SHEET NO.:

**A1.2.2**

4 OF 37  
SEQUENCE NO:  
15 / 90

