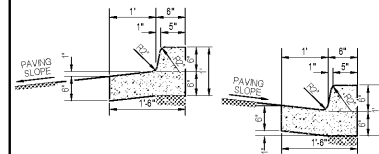
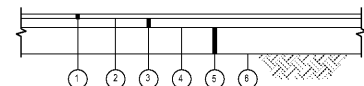


PAINTED STRAIGHT ARROW
N.T.S.



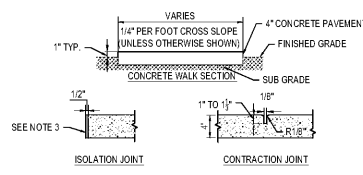
- NOTES:**
- SLOPE GUTTER AS SHOWN ACCORDING TO PAVING SLOPE. THIS SLOPE SHALL NOT EXCEED 5% TO COMPLY WITH ADA REQUIREMENTS AT ANY HANDICAP RAMP.
 - PROVIDE EXPANSION JOINTS WITH PREFORMED JOINT FILLER MATERIAL CUT TO MATCH SHAPE OF CURB AND GUTTER OF AT LEAST 1/2 INCH IN WIDTH AT INTERVALS NOT LESS THAN 30' NOR GREATER THAN 120' AND AT P.C.'S AND P.T.'S OF ALL CURVES, AT STRUCTURES (CURB INLETS, WHEELCHAIR RAMPS, ETC.).
 - SAW CUT 3/4" JOINTS AT SPACING NOT LESS THAN 5' AND NOT TO EXCEED 15' JOINT DEPTH SHALL BE 1/4" DEPTH OF CURB/GUTTER. JOINT TO BE PERPENDICULAR TO THE RUN OF THE CURB AND GUTTER.
 - IF ADJACENT TO CONCRETE PAVING SIDEWALK LINE UP JOINTS WITH ADJACENT CONCRETE JOINTS.
 - 3,500 PSI CONCRETE UNLESS STATED OTHERWISE.
 - PROVIDE 8" CRUSHED STONE BASE UNDER ALL CURBS AND GUTTERS.
 - VERIFY SHAPE OF CURB TO MATCH ANY EXISTING CONDITIONS OR LOCAL STANDARDS.

18" CURB & GUTTER
N.T.S.



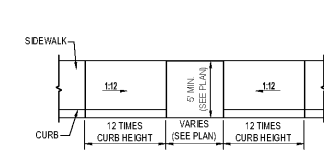
- NOTES:**
- REQUIRED 1.5 INCH BITUMINOUS CONCRETE, WEARING LAYER (ALDOT 424A - 3" MAX AGGREGATE SIZE)
 - REQUIRED TACK COAT (ALDOT 405)
 - REQUIRED 2 INCHES BITUMINOUS CONCRETE, BINDER LAYER (ALDOT 424B - 1" MAX AGGREGATE SIZE)
 - REQUIRED BITUMINOUS TREATMENT (PRIME) (ALDOT 401, TYPE A)
 - REQUIRED 6 INCHES CRUSHED AGGREGATE BASE COURSE, TYPE B, (ALDOT 825)
 - SUBGRADE: TOP 12 INCHES - 98% COMPACTION ASTM D-698
- NOTE: ALL MIX DESIGNS ARE PER THE ALABAMA DEPARTMENT OF TRANSPORTATION STANDARD SPECIFICATIONS FOR HIGHWAY CONSTRUCTION - 2019 EDITION.

STANDARD DUTY ASPHALT PAVING
N.T.S.



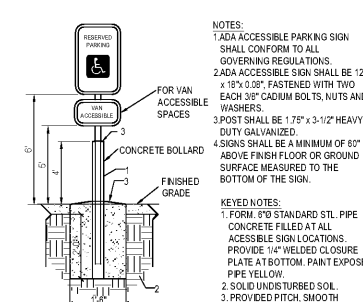
- NOTES:**
- CONTRACTION (SAW CUT) JOINTS TO BE EVERY 5 TO 8 FEET WITH A MAXIMUM SPACING OF TWICE THE SLAB THICKNESS IN FEET, CUT TO A DEPTH OF 1" MINIMUM TO 1 1/2" MAXIMUM.
 - CUT CONTRACTION JOINTS BETWEEN 2 HOURS AND 12 HOURS OF CONCRETE PLACEMENT.
 - PLACE ISOLATION JOINTS WHEN ADJACENT TO BUILDINGS, CURBS, ETC. USE A 1" THICK PREFORMED EXPANSION JOINT FILLER CONFORMING TO ASTM D1751 OR D1752 TO CREATE A BOND BREAK. INSTALL JOINT SEALER OVER JOINT FILLER.
 - CONCRETE TO BE 4000 PSI COMPRESSIVE STRENGTH UNLESS OTHERWISE NOTED.
 - PLACE SIDEWALK ON COMPACTED SUBGRADE - 98% STANDARD PROCTOR DENSITY (ASTM D698) UNLESS OTHERWISE NOTED.

TYPICAL SIDEWALK DETAIL
N.T.S.



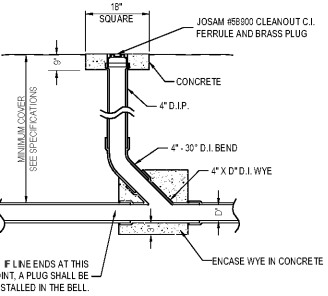
- NOTES:**
- THE FULL WIDTH, DEPTH, AND FLARES SHALL BE PAINTED THE ADA COLOR.
 - ALL WORK SHALL BE IN ACCORDANCE WITH THE AMERICAN DISABILITIES ACT OF 1990 INCLUDING CONTRASTING TEXTURES, AS REQUIRED.

ADA INLINE CURB RAMP
N.T.S.

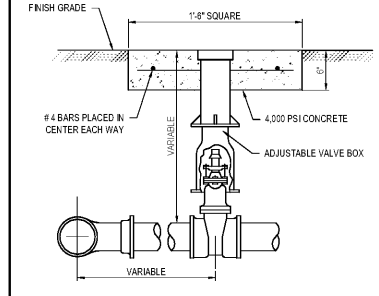


- NOTES:**
- ADA ACCESSIBLE PARKING SIGN SHALL CONFORM TO ALL GOVERNING REGULATIONS.
 - ADA ACCESSIBLE SIGN SHALL BE 12" x 18" x 0.28", FASTENED WITH TWO EACH 3/8" CADMIUM BOLTS, NUTS AND WASHERS.
 - POST SHALL BE 1.75" x 3.12" HEAVY DUTY GALVANIZED.
 - SIGNS SHALL BE A MINIMUM OF 60" ABOVE FINISH FLOOR OR GROUND SURFACE MEASURED TO THE BOTTOM OF THE SIGN.
- KEYED NOTES:**
- FORM #70 STANDARD STL. PIPE CONCRETE FILLED AT ALL ACCESSIBLE SIGN LOCATIONS. PROVIDE 1/4" WELDED CLOSURE PLATE AT BOTTOM. PAINT EXPOSED PIPE YELLOW.
 - SOLID UNDISTURBED SOIL.
 - PROVIDED PITCH, SMOOTH CONCRETE FINISH.

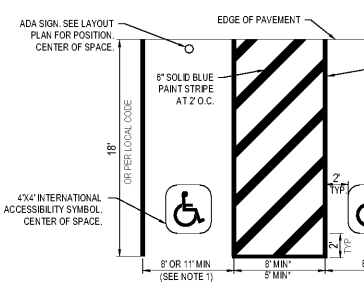
BOLLARD MOUNTED ADA ACCESSIBLE SIGN
N.T.S.



TYPICAL CLEANOUT
N.T.S.

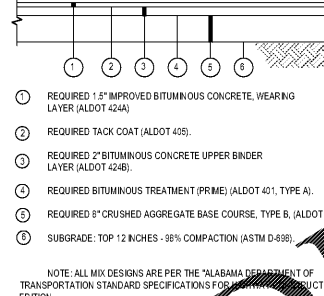


TYPICAL GATE VALVE
N.T.S.



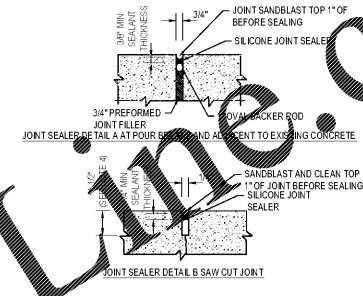
- NOTES:**
- ALL ACCESSIBLE PARKING AND ROUTES TO CONFORM TO THE REQUIREMENTS OF THE AMERICANS WITH DISABILITIES ACT.
 - FOR VAN SPACE, 8" MINIMUM SPACE WITH 8" MINIMUM ACCESSIBLE OR 11" MINIMUM SPACE WITH 5" MINIMUM ACCESSIBLE.
 - CAN REPEAT DETAIL IF ADDITIONAL SPACES ARE REQUIRED. (SEE LAYOUT PLAN).
 - SIGN NOTES:
 - IF SIGN LOCATED IN PAVEMENT SHALL BE BOLLARD TYPE SIGN. SEE BOLLARD MOUNTED ACCESSIBLE SIGN DETAIL.
 - IF SIGN LOCATED BEYOND PAVEMENT SHOULD BE MOUNTED ON POST PER ACCESSIBLE SIGN DETAIL.
 - DO NOT PLACE SIGNS WITHIN THE ACCESSIBLE ROUTE.
 - CONTRACTOR TO VERIFY WITH LOCAL CODES FOR ANY ADDITIONAL REQUIREMENTS.

ACCESSIBLE PARKING
N.T.S.



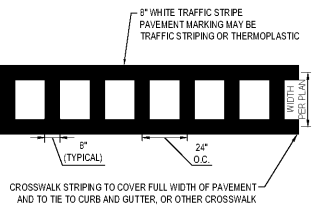
- NOTES:**
- REQUIRED 1.5" IMPROVED BITUMINOUS CONCRETE, WEARING LAYER (ALDOT 424A)
 - REQUIRED TACK COAT (ALDOT 405)
 - REQUIRED 2" BITUMINOUS CONCRETE UPPER BINDER LAYER (ALDOT 424B)
 - REQUIRED BITUMINOUS TREATMENT (PRIME) (ALDOT 401, TYPE A)
 - REQUIRED 8" CRUSHED AGGREGATE BASE COURSE, TYPE B, (ALDOT 825)
 - SUBGRADE: TOP 12 INCHES - 98% COMPACTION (ASTM D-698)
- NOTE: ALL MIX DESIGNS ARE PER THE ALABAMA DEPARTMENT OF TRANSPORTATION STANDARD SPECIFICATIONS FOR HIGHWAY CONSTRUCTION - 2019 EDITION.

HEAVY DUTY ASPHALT PAVING
N.T.S.

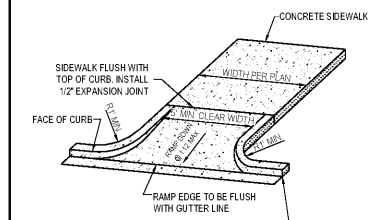


- NOTES:**
- CONTRACTOR SHALL INSTALL 4" OF CRUSHED AGGREGATE BASE COURSE, TYPE B (ALDOT 825) UNDER ALL CONCRETE PAVING.
 - CONCRETE SHALL HAVE 4000 PSI AT 28 DAYS.
 - CONTRACTOR SHALL INSTALL CONTROL JOINTS IN CONCRETE PAVING AT 12' MAX SPACING BOTH WAYS. COORDINATE WITH ARCHITECTURAL PLANS FOR SCORING PATTERN.
 - CONTROL JOINT TO BE 1/4" OF THE SLAB THICKNESS TYPICALLY.
 - EXPANSION JOINTS AT POUR BREAKS AND 120' MAX SPACING. COORDINATE WITH CONTROL JOINTS.
 - IN LIEU OF REINFORCEMENT SHOWN, CONTRACTOR MAY USE #4 W2/W2.9 WELDED WIRE FABRIC.
 - IF DRY-CUTTING OF CONTROL JOINTS IS USED, AN ABRASIVE BLADE MAY BE USED IN LIEU OF SANDBLASTING.

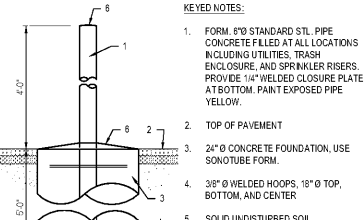
CONCRETE PAVING
N.T.S.



PEDESTRIAN CROSSWALK
N.T.S.

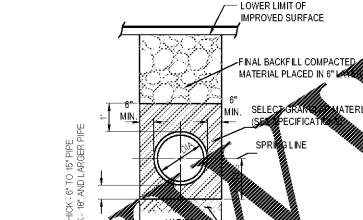


ADA CURB RETURN RAMP
N.T.S.



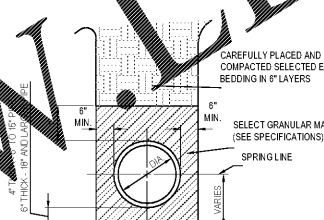
- KEYED NOTES:**
- FORM #70 STANDARD STL. PIPE CONCRETE FILLED AT ALL LOCATIONS INCLUDING UTILITIES, TRASH ENCLOSURE, AND SPILLER RISERS. PROVIDE 1/4" WELDED CLOSURE PLATE AT BOTTOM. PAINT EXPOSED PIPE YELLOW.
 - TOP OF PAVEMENT
 - 24" Ø CONCRETE FOUNDATION, USE SONOTUBE FORM.
 - 3/8" Ø WELDED HOOPS, 18" Ø TOP, BOTTOM, AND CENTER
 - SOLID UNDISTURBED SOIL.
 - PROVIDED PITCH, SMOOTH CONCRETE FINISH.

TYPICAL PIPE BOLLARD GUARD STANDARD
N.T.S.



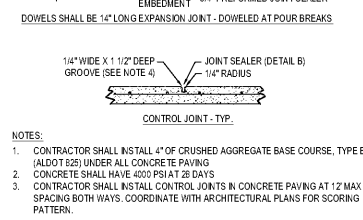
- NOTES:**
- CAREFULLY PLACED AND COMPACTED SELECTED EARTH BEDDING IN 6" LAYERS
 - SELECT GRANULAR MATERIAL (SEE SPECIFICATIONS) SPRING LINE
 - TABLE SUBGRADE APPROVED BY NOTCH

TYPICAL PIPE BEDDING AND INITIAL BACKFILL UNDER IMPROVED SURFACES
N.T.S.



- NOTES:**
- CAREFULLY PLACED AND COMPACTED SELECTED EARTH BEDDING IN 6" LAYERS
 - SELECT GRANULAR MATERIAL (SEE SPECIFICATIONS) SPRING LINE
 - TABLE SUBGRADE APPROVED BY NOTCH

TYPICAL PIPE BEDDING AND INITIAL BACKFILL UNDER UNIMPROVED SURFACES
N.T.S.

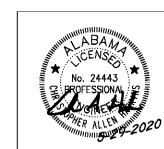


- NOTES:**
- CONTRACTOR SHALL INSTALL 4" OF CRUSHED AGGREGATE BASE COURSE, TYPE B (ALDOT 825) UNDER ALL CONCRETE PAVING.
 - CONCRETE SHALL HAVE 4000 PSI AT 28 DAYS.
 - CONTRACTOR SHALL INSTALL CONTROL JOINTS IN CONCRETE PAVING AT 12' MAX SPACING BOTH WAYS. COORDINATE WITH ARCHITECTURAL PLANS FOR SCORING PATTERN.
 - CONTROL JOINT TO BE 1/4" OF THE SLAB THICKNESS TYPICALLY.
 - EXPANSION JOINTS AT POUR BREAKS AND 120' MAX SPACING. COORDINATE WITH CONTROL JOINTS.
 - IN LIEU OF REINFORCEMENT SHOWN, CONTRACTOR MAY USE #4 W2/W2.9 WELDED WIRE FABRIC.
 - IF DRY-CUTTING OF CONTROL JOINTS IS USED, AN ABRASIVE BLADE MAY BE USED IN LIEU OF SANDBLASTING.

CONCRETE PAVING
N.T.S.



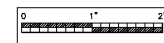
NEW LIBRARY FOR THE CITY OF OPELIKA
GLENNE STREET
OPELIKA, ALABAMA 36801



SHEET TITLE:
CIVIL DETAILS

PROJ. MGR.: CAH
DRAWN: TGB
DATE: JUNE 1, 2020
CHECKED BY: RAN
REVISIONS:

JOB NO. 19-32
SHEET NO. C8.0
9 OF 11
SEQUENCE NO. 10/90



Order Plans @