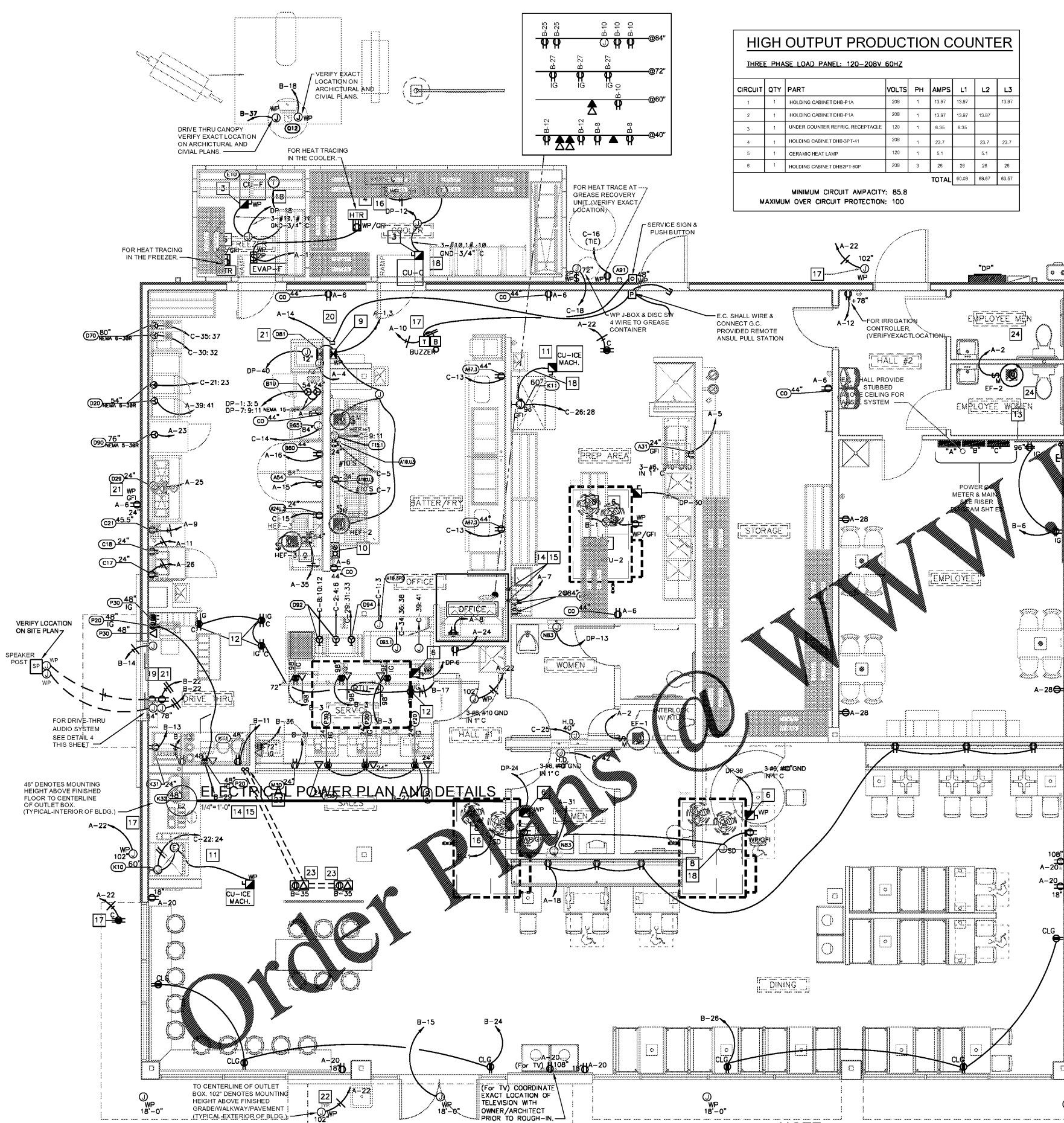
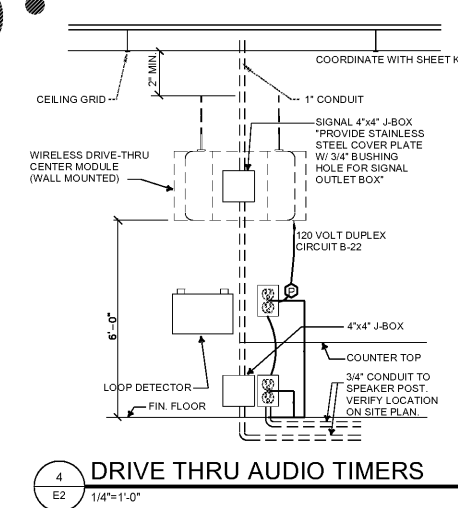
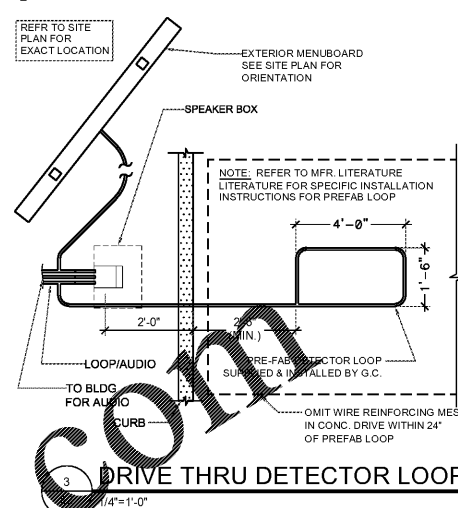
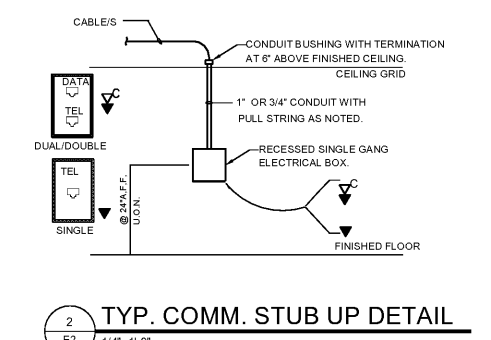


HIGH OUTPUT PRODUCTION COUNTER

THREE PHASE LOAD PANEL: 120-208V 60HZ

CIRCUIT	QTY	PART	VOLTS	PH	AMPS	L1	L2	L3
1	1	HOLDING CABINET DMB-F1A	208	1	13.87	13.87	13.87	13.87
2	1	HOLDING CABINET DMB-F1A	208	1	13.87	13.87	13.87	13.87
3	1	UNDER COUNTER REFRIG. RECEPTACLE	120	1	6.35	6.35		
4	1	HOLDING CABINET DMB-SP1-41	208	1	23.7	23.7	23.7	23.7
5	1	CERAMIC HEAT LAMP	120	1	5.1	5.1		
6	1	HOLDING CABINET DMB-PT-60P	208	3	28	28	28	28
					TOTAL	60.29	68.67	65.57

MINIMUM CIRCUIT CAPACITY: 85.8
MAXIMUM OVER CIRCUIT PROTECTION: 100



- GENERAL NOTES:**
- VERIFY MOUNTING HEIGHTS OF ALL RECEPTACLES WITH EQUIPMENT SUPPLIED PRIOR TO INSTALLATION.
 - ALL EQUIPMENT ELECTRICAL OUTLETS ARE DIMENSIONED TO CENTERLINE OF BOX FROM ABOVE FINISHED FLOOR.
 - ELECTRICAL CONTRACTOR SHALL VERIFY WIRE & PLUG CONNECTIONS FOR EQUIPMENT AS REQUIRED.
 - ALL 120V, 20A RECEPTS IN THE FOOD PREP AREA SHALL BE GROUNDING MULTIPLE OUTLET TYPE.
 - BEFORE PHONE IS INSTALLED THE FOLLOWING SHALL BE IN PLACE: CONDUIT AND PULL STRING, ELEC. BACK BOARD, GROUNDED ON FIRE STAIRWELL WALL.
 - KV FIBER BACK LINE NEEDS TO BE A POLE MOUNT. PROVIDE "UP" OUTLET AT ROOFTOP EQUIPMENT.
- P.O.S. NOTES:**
- ALL P.O.S. (POINT OF SALE) CIRCUITS SHALL HAVE AN ISOLATED GROUND WIRE BACK TO THE PANEL. ALL P.O.S. EQUIP. SHALL BE WIRED INDEPENDENTLY OF ANY NON-P.O.S. EQUIPMENT.
 - ALL RECEPTACLES FOR P.O.S. EQUIPMENT SHALL BE ISOLATED GROUND WITH SURGE SUPPRESSOR TYPE. ALL RECEPTACLES FOR P.O.S. EQUIPMENT SHALL BE SINGLE UNIT, UNLESS A DUPLEX RECEPTACLE CAN BE USED TO SUPPLY TWO P.O.S. UNITS. DUPLEX RECEPTACLES MAY BE USED IN THE MANAGER'S OFFICE FOR NON-P.O.S. EQUIPMENT (COMPUTER, MUSIC, FIRE ALARM, SECURITY, ETC.)
 - ALL CIRCUITS FOR P.O.S. EQUIPMENT SHALL BE CONNECTED TO THE SAME PHASE OF POWER IN THE PANEL. ALL BRANCH CIRCUIT BREAKERS SUPPLYING P.O.S. EQUIPMENT SHALL HAVE LOCKING HANDLES DEVICES.
 - EACH RECEPTACLE TYPE (LOCKING OR STRAIGHT BLADE) SHALL MATCH THAT OF THE EQUIPMENT FURNISHED. WHERE P.O.S. EQUIPMENT IS FURNISHED WITHOUT A PLUS THE RECEPTACLE SHALL BE LOCKING TYPE. COORDINATE RECEPTACLE TYPES WITH THE P.O.S. EQUIPMENT SUPPLIER.

POWER PLAN KEY NOTES

- REFER TO FOOD SERVICE DRAWING K-SHEETS FOR TAG LOCATIONS AND MOUNTING HEIGHTS NOT SHOWN THIS SHEET.
- REFER TO HVAC DRG. M1 FOR EXACT LOCATIONS FOR MECHANICAL HVAC EQUIPMENT.
- 3P30A NEMA 3R FUSED DISC. ON WALK-IN COND. UNIT LOCATED ON ROOF OF UNIT. FUSE PER EQUIPMENT NAMEPLATE. LIQUID TIGHT FLEX CONNECTION.
- MAKE FINAL POWER CONNECTION TO WALK-IN COOLER EVAPORATOR, PROVIDE MOTOR SWITCH IN CAST BOX.
- MAKE FINAL POWER CONNECTION TO WALK-IN FREEZER FREEZER EVAP., DEFROSTER, HEAT TAPE & DOOR HEATER.
- REUSE EXISTING LOCAL 3P30A NEMA 3R NON-FUSED DISC SW. ON A/C RTU'S (RTU-2,2,3) LOCATED ON ROOF. PROVIDE NEW 3P30A NEMA 3R NON-FUSED DISC SW. ON A/C RTU-4 LOCATED ON ROOF. PROVIDE LIQUID TIGHT FLEX CONN. TO UNIT.
- PROVIDE GFCI PROTECTED 5-20R DUPLEX RECEPT. INSTALLED IN WP BOX W/ WP COVER AT RTU. (TYP.)
- PROVIDE 120V WIRING TO DUCT MOUNTED SMOKE DETECTORS AND REMOTE TEST INDICATORS. FOR EXACT LOCATIONS OF DUCT DETECTORS, REMOTE INDICATORS & TEST SW'S. (SEE HVAC PLANS.)
- E.C. SHALL INSTALL AND WIRE RELAY CONTROL PANEL PACKAGE FOR HOOD EXHAUST FANS EF-1 AND EF-2. PROVIDE POWER AND INTERLOCK CONTROL WIRING FOR HP1-F CONTROL PANEL AND HOOD FIRE SUPPRESSION SYSTEM. SEE HOOD FAN CONTROL INTERLOCK WIRING DIAGRAM. SHEET M2. MOUNT STARTERS AND CONTROLS ON WALL.
- "ON/OFF" SELECTOR SWITCH AND PILOT LIGHT IN NEMA 4X STAINLESS STEEL ENCLOSURE MOUNTED ON THE FACE OF THE HOOD. PROVIDED BY HOOD MFR.
- PROVIDE 2P30A NEMA 3R FUSED DISC SWITCH & L.T. FLEX CONNECTION TO ROOF MTD ICE MAKER COND UNIT. FUSE SIZE PER MFG'S NAMEPLATE DATA.
- PROVIDE WALL OUTLET 108" AFF WISOLATED GROUND RECEPTACLES FOR VIDEO MONITOR/PRINTER & OR HEADSET. VERIFY EXACT REQUIREMENTS & LOCATION.
- PROVIDE 3/4" x 1 1/2" x 2 1/2" W. PLYWOOD TELEPHONE BOARD PAINTED WITH 2 COATS OF "LISTED" FIRE RETARDANT LIGHT GRAY COLOR PAINT. AT 96" AFF. PROVIDE QUAD RECEPTACLE ADJACENT TO BOARD. PROVIDE # 6 CU. GROUND TO SERVICE ENTRANCE GROUND, SEE DETAIL ARCHITECTURAL ELEVATIONS.
- PROVIDE ELECTRICAL CONDUIT THROUGH WALL FROM CEILING TO 18" AFF FOR THE PRODUCTION COUNTER. EQUIPMENT REQUIRES ONE 3-PHASE CIRCUIT, AND FIVE 1-PHASE CONDUITS.
- PRODUCTION COUNTER ELECTRICAL POWER CIRCUITS: REFER TO SHEET E3a AND PANEL SCHEDULE "C" FOR CIRCUIT NO'S. CONFIRM WITH EQUIPMENT SUPPLIER SHOP DRAWINGS FOR EXACT LOCATIONS AND TYPE OF CONNECTIONS FOR EQUIPMENT AND HEAT LIGHTS IN/ON PRODUCTION COUNTER.
- BRANCH CIRCUIT(S) CONTINUED TO ADDITIONAL OUTLETS. HOMERUN SHOWN FOR CLARITY ONLY.
- CONNECTION FOR SECURITY CAMERA. VERIFY EXACT LOCATIONS AND TYPE CONNECTIONS FOR INDOOR AND OUTDOOR CAMERAS WITH G.C.
- ROUTE ALL CONDUIT ROOF PENETRATIONS THRU (WITH-IN) ROOF CURBS FOR THE EQUIPMENT. REFER TO MECH. PLANS FOR CURB DETAILS. (TYPICAL)
- PROVIDE 1" CONDUIT TO 6" ABOVE CEILING FOR DATA CABLE.
- HOOD ANSUL FIRE SUPPRESSION SYSTEM.
- MAKE FINAL CONNECTION TO EQUIPMENT.
- COORDINATE EXTERIOR CAMERA LOCATIONS WITH INSTALLED AWNINGS TO AVOID OBSTRUCTED VIEWS.
- PROVIDE ELECTRICAL AND COMMUNICATIONS CONDUITS UNDER SLAB TO NEAREST WALL, THEN UP TO ABOVE LAY IN CEILING. COORDINATE EXACT LOCATION AND CONDUIT SIZE REQUIREMENTS WITH EQUIPMENT MANUFACTURER PRIOR TO ROUGH-IN.
- EXISTING WATER HEATER TO REMAIN. RECONNECT TO PANEL "C" (C-17, C-19). REFER TO PLUMBING PLANS FOR ADDITIONAL INFORMATION.

NOTE:

REFER TO ARCHITECTURAL ELEVATIONS FOR EXACT DIMENSIONED LOCATIONS FOR ALL WALL OUTLETS

ALL CIRCUITS SERVING KITCHEN DEVICES / OUTLETS SHALL BE GFI PROTECTED BY BREAKER OR OUTLET.

REFER TO SHEET E2 FOR KITCHEN EQUIPMENT CONNECTION SCHEDULE. REFER TO KITCHEN DESIGNER PLANS (K-1-K4) FOR ADDITIONAL INFORMATION.



SHULTZ ENGINEERING GROUP
212 N. McDowell St, Suite 204
Charlotte, NC 28204
(P) 704.334.7363 (F) 704.347.0093
www.shultzeg.com | SEG - 20-078
NC FIRM LICENSE NUMBER: C-0898