

LIGHT FIXTURE SCHEDULE

MARK	DESCRIPTION	MANUFACTURER	LIGHT FIXTURE	COLOR	BULBS
A	2 x 4 LED LAY-IN	HERMITAGE	20800844	WHITE	52 WATTS
B	2 x 2 LED LAY-IN	HERMITAGE	MATCH STYLE OF FIXTURE 'A'	WHITE	26 WATTS
CL	COOLER/FREEZER	BY OTHERS	BY COOLER MANUFACTURER		
D	BALCONY RECESSED SOFFIT LIGHT (BY SIGN SUPPLIER/BALCONY)	BY OTHERS	851-DL-100MH-FP-WH-120	WHITE	(1) MH100/UMED
E	MANSARD WALL MOUNT UNIT	HERMITAGE	09700809	CLEAR	(1) 26W
EM	EMERGENCY LIGHTING UNIT	EXITRONIX	90902323	WHITE	(2) 5W
ER	REMOTE EMERGENCY LIGHTING UNIT	EXITRONIX	90901052	WHITE	(1) 5W
EX	LED EXIT EMERGENCY COMBO	EXITRONIX	90902167	WHITE	INCLUDED
H	LED GOOSENECKS - OUTDOOR	HERMITAGE	93102102	CUSTOM	38 WATTS
L1	COMMUNITY TABLE LIGHT	HERMITAGE	H-HLP25TPNSLN	BRUSHED AL	9.12W WARM WHITE
L2	FAMILY NOOK LIGHT	HERMITAGE	H-PP18SHD80P		100 WATTS
L4	PERIMETER WALL BOOTH LIGHTS	HERMITAGE	GALATIN GALA	TAN	LED 2700K
LL5	DINING/FSC/RESTROOM LIGHT FIXTURE	LSI	PDL6KADJL-12-30-12	WHITE	14 WATTS
L7	DINING ACCENT LIGHTING	TRELLIS 2' LED	BY DESIGNER SUPPLIER		LED
WP	WALL PACK w/ PHOTO CELL (REAR DOOR)	SECURITY	SWP-100-120B-M	BRONZE	(1) MH100/UMED

SITE LIGHTING (VERIFY COUNTS AND TYPE WITH SIGN PLAN)

MARK	DESCRIPTION	MANUFACTURER	LIGHT FIXTURE	COLOR	BULBS
LP	166W LED SITE HEAD	CREE	7200452	DARK BRONZE	166 WATTS
LP	25' SQUARE STEEL POLE	CREE	72004957	DARK BRONZE	N/A

SITE LIGHTING - DARK SKY APPROVED (WHERE REQUIRED)

MARK	DESCRIPTION	MANUFACTURER	LIGHT FIXTURE	CORRELATED COLOR TEMPERATURE	COLOR	BULBS
LP-DS	166W LED SITE HEAD	CREE	7200452	3000K	DARK BRONZE	166 WATTS
H-DS	LED GOOSENECKS - OUTDOOR	HERMITAGE	93102318	3K	CUSTOM	38 WATTS
D1	LED SHUTTER LIGHT MOUNT IN FIELD	CREE	72010590	3000K	EVERGREEN	25 WATTS

NOTE:  
1. VERIFY WIND LOAD AND FIXTURE POLE SIZE IS SUFFICIENT.  
2. LABOR WARRANTY FOR TWO YEARS AND AN OVERALL TEN YEAR WARRANTY IS PROVIDED ON ALL PARKING LOT LIGHTING THRU HERMITAGE LIGHTING NATIONAL ACCOUNTS.  
3. PLEASE CONTACT HERMITAGE LIGHTING FOR INFORMATION ON THE APPROVED LIGHTING PACKAGE, AND PRICING TEL: (800) 264-3383  
4. ALL FIXTURES ALLOWED FOR SPECIFIED LIGHT FIXTURES.  
5. APPROVED VENDORS ARE ALLOWED TO BE USED FOR PURCHASING POPEYES LOUISIANA KITCHEN BRAND PRODUCTS.

ALL LIGHT FIXTURES LISTED IN THE ABOVE SCHEDULE SHALL BE FURNISHED AND INSTALLED BY THE ELECTRICAL CONTRACTOR, EXCEPT AS NOTED IN PARAGRAPH, PART 1.1.1 OF ELECTRICAL SPECIFICATIONS.

FIXTURE NOTES:  
1. SEE ARCHITECTURAL DETAILS FOR MOUNTING LOCATIONS.  
2. ALL OUTLETS FOR LIGHTS SHALL BE SUPPORTED INDEPENDENTLY OF CEILING SYSTEM USING 1/4" ALL THREAD ROD.  
3. PROVIDE REMOTE MOUNTED (ON ROOF) PE CELL FOR ALL EXTERIOR FIXTURE, TYPE 'WP' NOT ON THE LIGHTING CONTACTOR.  
4. BALLAST LOCATION FOR GOOSE NECKS INSTALLED PER N.E.C.

SHEET NOTES:

- ALL "EX" EMERGENCY & EXIT LIGHTING FIXTURES SHALL BE CONNECTED AHEAD OF ROOM/AREA SWITCHES PER NATIONAL ELECTRICAL CODE (NEC) ARTICLE 700-12(f).
- VERIFY THE EXACT LOCATION OF SIGNS, AND FASCIA BOXES BEFORE INSTALLATION OF JUNCTION BOXES.
- HOMERUNS MAY BE COMBINED AS ALLOWED BY THE NATIONAL ELECT. CODE ALL CONDUIT SHALL BE SIZED PER THE 2002 NEC.
- ELECTRICAL CONTRACTOR SHALL VERIFY EXACT SIGN(S) WIRING REQUIREMENTS WITH THE SIGN SUPPLIER PRIOR TO SUBMITTING A BID FOR THE ELECTRICAL.
- ELECTRICAL CONTRACTOR SHALL VERIFY THE LOCATION OF THE PYLON SIGN ON THE SITE PLAN.
- PROVIDE 2P/30A NEMA 3R, FUSED DISCONNECT SWITCH W/ LIQUID-TIGHT FLEXIBLE CONNECTION TO PYLON SIGN. FUSE SIZE PER SIGN MFRS RECOMMENDATION.
- THE BUILDING SIGNAGE, PYLON SIGN, FASCIA LIGHTING, BUILDING SIGN LIGHTING, DRIVE-THRU MENU BOARDS(S), AND SITE LIGHTING SHALL BE WIRED THRU THE LIGHTING CONTRACTORS FOR AUTOMATIC & MANUAL CONTROL.
- PROVIDE RACEWAYS, WIRING, AND LAMPS (F40T8) FOR ALL LIGHT FIXTURES FURNISHED W/ THE FREEZER/COOLER/STORAGE UNIT. LIGHT FIXTURES SHALL BE INSTALLED BY ELECTRICAL CONTRACTOR. COORDINATE THE INSTALLATION OF SWITCHES AND PLATES WITH THE EQUIP. SUPPLIER.
- J-BOX ON HOOD FOR PRE-WIRED HOOD LIGHTS.
- G.C. TO VERIFY EXACT ELECTRICAL REQUIREMENTS FOR ILLUMINATED SITE/MONUMENT SIGN STRUCTURE W/ SIGN SUPPLIER PRIOR TO INSTALLATION. G.C. TO PROVIDE FINAL ELECTRICAL HOOK-UP.
- COORDINATE THE INSTALLATION OF THE MANSARD WALL MOUNTED FIXTURE "E" (JELLY JAR LIGHTS) WITH THE AWNING STRUCTURAL LAYOUT. THE LIGHTS SHOULD BE CENTERED ABOVE EACH WINDOW GLAZING.
- ROUTE CIRCUIT VIA EXTERIOR/SIGN LIGHTING CONTRACTOR (SEE CONTROL SCHEMATIC DIAGRAM SHEET E1).
- FIXTURE TYPE "B1" EQUIPPED WITH EMERGENCY LIGHTING BATTERY PACK. THE BATTERY PACK SHALL BE WIRED AHEAD OF ANY SWITCHES.
- 36"x6"x8" SHEET METAL GUTTER FOR BALLAST AND CAPACITORS FOR FIXTURES "H". MOUNT GUTTER ABOVE CEILING TO INTERIOR STUDS.
- ALL GOOSENECK "H" FIXTURES TO BE CENTERED OVER THE SHUTTERS AND THE AWNINGS ACCORDING TO THE ELEVATIONS. THE MIDDLE GOOSENECK SHALL BE CENTERED ON THE FRONT AWNING, AND THE SIDE GOOSENECKS SHALL BE INSTALLED ACCORDING TO THE FRONT ELEVATION.
- CONTRACTOR SHALL INSTALL THE PENDANT LIGHTS AT THE SELF SERVE DRIVE STATION AFTER ALL THE EQUIPMENT HAS BEEN INSTALLED AND SHOWN TO BE OPERATIONAL.

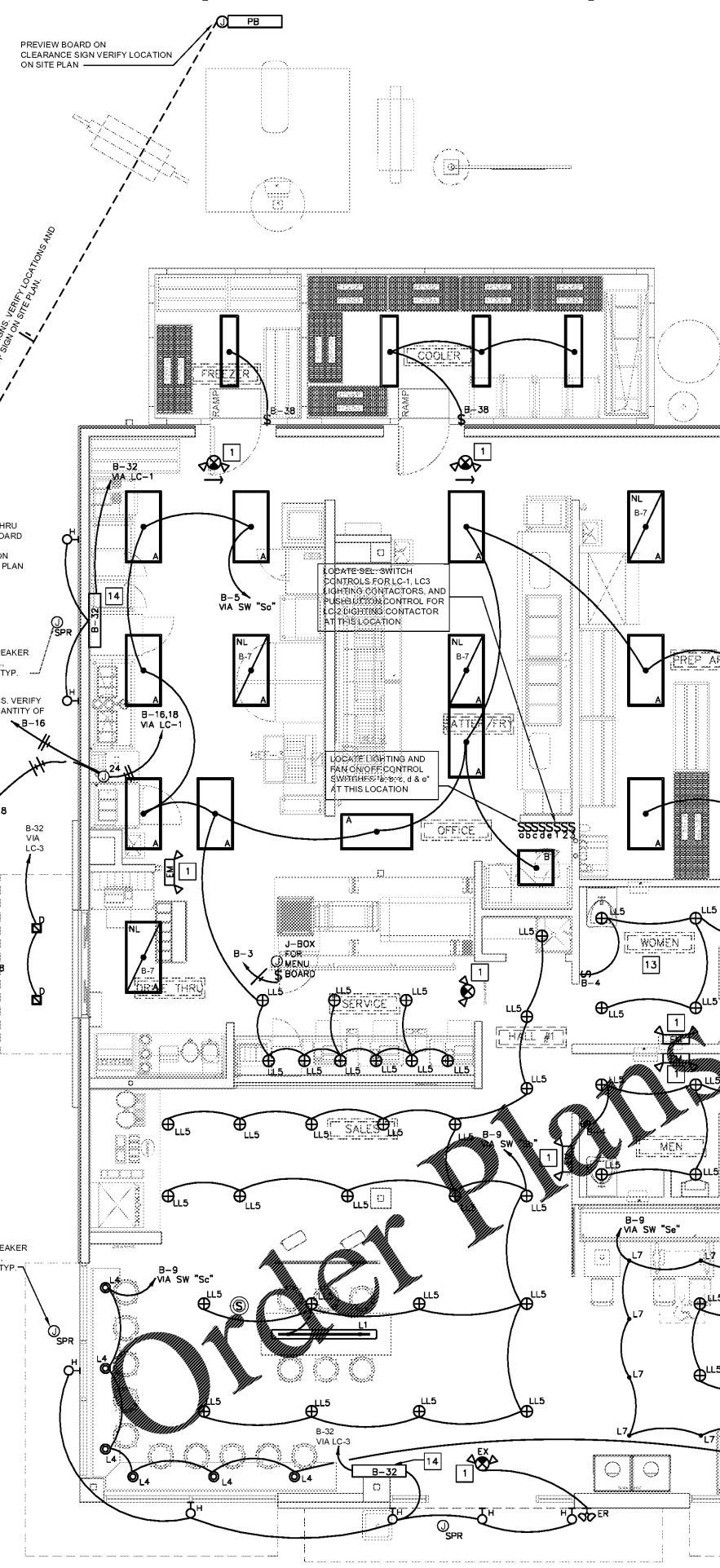
POPEYES RADIO SYSTEM

DESCRIPTION	MAKE	MODEL	QUANTITY
RECESSED SPEAKERS* (DINING)	BOBE	MODEL #16, BLACK	4
RECESSED SPEAKERS* (KITCHEN)	MUZAK	MBB 9-13, BLACK	2
OUTDOOR BOX SPEAKERS*	OWB	701	4
AMPLIFIER	PASO	MM 3130 BGM	1
SPEAKER SUPPORT	QUAM	SBB-2	2
SPEAKER BACKCAN	QUAM	ERD-8	2
CABLE, CONNECTORS, HARDWARE AND SHELF	VARIOUS	VARIOUS	1
AREA VOLUME CONTROL	QUAM	QC-10	3
RECEIVER	ECHO STAR	3000	1
DISH	CHANNEL MASTER	1.0 ANTENNA	1

\* NUMBER OF SPEAKERS MAY VARY DUE TO DESIGN CONSIDERATIONS  
\* LABOR INCLUDES INSTALLATION OF 15' OF 1/2" GAUGE SPEAKER WIRE.  
SEE THE NATIONAL ACCOUNT VENDOR LIST FOR THE CONTACT INFORMATION FOR RETAIL RADIO.

NOTE:  
CRABPOT LIGHTS AT 1" COUNTER TO BE MOUNTED 84" ABOVE FINISH FLOOR.  
PENDANT and CRABPOT LIGHTS AT TABLES TO BE MOUNTED 66" ABOVE FINISH FLOOR.

NOTE:  
REFER TO ARCHITECTURAL REFLECTED CEILING PLAN, EXTERIOR ELEVATIONS AND WALL SECTIONS FOR DIMENSIONED LOCATIONS OF LIGHTING FIXTURES.



1 LIGHTING REFLECTED CEILING PLAN  
1/4"=1'-0"



SHULTZ ENGINEERING GROUP  
212 N. McDowell St, Suite 204  
Charlotte, NC 28204  
(P) 704.334.7363 (F) 704.347.0093  
www.shultzeg.com | SEG - 20-078  
NC FIRM LICENSE NUMBER: C-0898