

ELECTRICAL SPECIFICATIONS
DIVISION 16 - ELECTRICAL SPECIFICATIONS

PART I. GENERAL PROVISIONS

- SCOPE: PROVIDE ALL LABOR, MATERIAL, AND EQUIPMENT IN ACCORDANCE WITH THESE SPECIFICATIONS, AND THE ACCOMPANYING DRAWINGS TO PROVIDE A COMPLETE AND PROPERLY OPERATING ELECTRICAL SYSTEM FOR THE BUILDING.
- THE CONTRACTOR SHALL FURNISH AND INSTALL ALL OF THE FOLLOWING MATERIAL AND EQUIPMENTS UNDER THIS DIVISION OF THE SPECIFICATIONS, UNLESS NOTED OTHERWISE: PANELBOARDS; LIGHTING FIXTURES; LAMPS; RACEWAYS; 600 VOLT WIRE AND CABLE; WIRING DEVICES; DEVICE PLATES; DEVICE, PULL, AND JUNCTION BOXES; SAFETY SWITCHES; MOTOR STARTERS; LIGHTING CONTROLS; CIRCUIT BREAKERS; FUSES; TIME CLOCKS; EQUIPMENT IDENTIFICATION (NAMEPLATES AND DIRECTORIES); WIRE AND CABLE TERMINATIONS; CONNECTIONS TO INDIVIDUAL UNITS OF EQUIPMENT FOR THE WALK-IN FREEZERS AND COOLERS; AND TEMPORARY POWER.
- THE FOLLOWING MATERIAL AND EQUIPMENT SHALL BE FURNISHED AND/OR INSTALLED BY OTHERS, OR UNDER OTHER DIVISIONS OF THE SPECIFICATIONS, UNLESS NOTED OTHERWISE: LOW VOLTAGE (24 VOLT) WIRE AND CABLE; COMMUNICATION DEVICES; SECURITY EQUIPMENT; POINT OF SALE (POS) EQUIPMENT; SIGNAGE; CONCRETE BASES FOR SITE LIGHTING POLES.
- THE FOLLOWING MATERIAL AND EQUIPMENT WILL BE FURNISHED BY OTHERS, OR UNDER OTHER DIVISIONS OF THE SPECIFICATIONS, AND INSTALLED BY THE CONTRACTOR, UNLESS NOTED OTHERWISE: SITE LIGHTING FIXTURES AND POLES.
- GENERAL REQUIREMENTS: ALL WORK SHALL BE PERFORMED BY SKILLED LICENSED ELECTRICIANS IN ACCORDANCE WITH THE BEST PRACTICES OF THE TRADE, MEETING THE REQUIREMENTS OF THE LATEST EDITION OF THE NATIONAL ELECTRICAL CODE, APPLICABLE FEDERAL, STATE AND LOCAL CODES, AND THE REQUIREMENTS OF THE ELECTRICAL UTILITY COMPANY FURNISHING THE SERVICES. ALL NECESSARY CONSTRUCTION PERMITS AND CERTIFICATES OF INSPECTION SHALL BE PURCHASED AND OBTAINED UNDER THIS CONTRACT.
- COORDINATION: ALL OUTLETS MUST BE ACCURATELY LOCATED, PARTICULARLY APPLIANCE OUTLETS WHICH SHALL BE LOCATED FROM THE DIMENSIONS GIVEN ON THE DRAWING AND FIELD VERIFIED. REVIEW THE ARCHITECTURAL, PLUMBING AND HEATING AND VENTILATING PLANS IN ORDER TO COORDINATE THIS WORK WITH OTHER TRADES, AND COOPERATE WITH THEM IN THE ENTIRE INSTALLATION.
- SERVICE VOLTAGE: THESE DRAWINGS ARE FOR A METERED, UNDERGROUND BUILDING SERVICE OF 120/208 VOLT, THREE PHASE, FOUR WIRE, 60 HERTZ. ALL KITCHEN AND AIR CONDITIONING EQUIPMENT HAS BEEN DESIGNED AND PURCHASED FOR USE ON THIS ELECTRICAL SYSTEM. THE CONTRACTOR SHALL CONTACT THE ELECTRICAL UTILITY AND VERIFY ALL OF THE ABOVE SERVICE CHARACTERISTICS, AND THE AVAILABLE FAULT CURRENT.
- SERVICE EQUIPMENT: THE SERVICE SHALL BE LOCATED AS SHOWN ON THE SITE PLAN, OR AS INDICATED IN THE INSTRUCTIONS TO BIDDERS. UTILITY POLES, PADS FOR UTILITY TRANSFORMERS, CURRENT TRANSFORMER ENCLOSURES, METERING EQUIPMENT, SERVICE MASTS, AND OTHER RELATED MATERIALS AND EQUIPMENT SHALL BE APPROVED, FURNISHED, AND INSTALLED AS REQUIRED. INCLUDE THE COST OF ALL THE ABOVE ITEMS. SERVICE CONNECTIONS AND METER CHARGES IN THE BASE BID. MAIN SERVICE SWITCHES AND CURRENT TRANSFORMER CABINETS SHALL BE INCLUDED IN THE BASE BID. UNLESS NOTED OTHERWISE, A MAIN SERVICE SWITCH WITH CURRENT LIMITING FUSES MAY BE USED WHEN THE AVAILABLE FAULT CURRENT (AFC) IS EXCESSIVE, IN ORDER TO USE STOCK PANELBOARDS, WITH 10K OR 22K AIC RATINGS.

PART II. MATERIALS

- MATERIALS: ALL MATERIALS SHALL BE NEW AND OF THE QUALITY INDICATED BY THE SPECIFIED BRAND NAMES. SUBSTITUTIONS OF MATERIAL OF EQUAL QUALITY BY OTHER MAJOR MANUFACTURERS OF COMMERCIAL EQUIPMENT MAY BE ACCEPTABLE, PROVIDED A LIST OF SUCH SUBSTITUTIONS IS APPROVED IN WRITING BY THE POPEYES DESIGN MANAGER, AND THE POPEYES CONSTRUCTION MANAGER. THE CONTRACTOR SHALL SUBMIT A SUBSTITUTION LIST IN TRIPLICATE AT LEAST FIVE DAYS PRIOR TO THE BID OPENING.

- PANELBOARDS: PANELBOARDS SHALL BE BOLT-IN CIRCUIT BREAKER TYPE, AS SHOWN ON THE PLANS. PANELS SHALL BE OF PANELBOARD CONSTRUCTION, 20 INCHES WIDE (MINIMUM), 5-3/4" TO 6-1/2" DEEP, UL LISTED, AND MEET UL 67, UL 50, AND FEDERAL SPECIFICATION WP-11 AS TYPE 1, CLASS 1, FLEXIBLE STEEL CONDUIT CIRCUIT BREAKERS, COPPER BUS BARS, NEUTRAL BUS, GROUND BUS, AND A HINGED LOCKABLE DOOR. CABINETS SHALL BE CODE GAUGE, GALVANIZED STEEL, MOUNTED AS SHOWN. PROVIDE TYPEWRITTEN CIRCUIT DIRECTORIES WITH CLEAR PLASTIC PROTECTORS IN ALL PANELS. ALL WIRES SHALL BE TAGGED WITH PANEL AND CIRCUIT NUMBERS. PANEL "MP" SHALL BE UL LISTED AND LABELED AS SUITABLE FOR USE AS SERVICE ENTRANCE EQUIPMENT. APPROVED MANUFACTURERS OF PANELS ARE SQUARE D/LEMTECHNIQUE, CUTLER-HAMMER, GENERAL ELECTRIC, WESTINGHOUSE, AND SIEMENS (I-T-E).
- LIGHTING FIXTURES: LIGHTING SHALL BE PURCHASED FROM THE POPEYES APPROVED NATIONAL ACCOUNT PARTNER - HERMITAGE LIGHTING. CONTACT HERMITAGE LIGHTING FOR SPECIAL PACKAGE PRICING. IF PRODUCT IS NOT PURCHASED FROM HERMITAGE LIGHTING, THEN THE PRODUCT IS SUBJECT TO POSSIBLE REMOVAL BY CONTRACTOR AND CORRECT PRODUCT INSTALLED AT THE CONTRACTOR'S EXPENSE, AND ALL SUBSTITUTIONS NEED TO BE APPROVED IN WRITING BY A PLK DESIGN MANAGER.
- WIRING DEVICES: ALL WIRING DEVICES SHALL BE UL LISTED, COMMERCIAL SPECIFICATION GRADE. SWITCHES SHALL BE RATED 20 AMPS AT 120/277 VOLTS, AC. STANDARD RECEPTACLES SHALL BE 20 AMP, DUPLEX, GROUNDING TYPE, IN NEMA CONFIGURATIONS, UNLESS NOTED OTHERWISE. SWITCHES IN THE SAME LOCATION SHALL BE GANGED BEHIND A SINGLE PLATE. DEVICE PLATES IN THE KITCHEN AREA SHALL BE METAL, ALUMINUM OR STAINLESS STEEL. DEVICE PLATES IN THE DINING AREA SHALL BE TAMPER RESISTANT, AND THERMOPLASTIC PLASTIC (NYLON) OR METAL, COLOR AS APPROVED BY POPEYES DESIGN. APPROVED MANUFACTURERS OF SWITCHES AND RECEPTACLES ARE HUBBELL, ARROW HART, BRYANT, LEVITON, PASS & SEYMOUR, GENERAL ELECTRIC, SLATER, OR EQUAL.
- SWITCHES:
 - SINGLE POLE: HUBBELL HBL1221-I, OR EQUAL
 - THREE WAY: HUBBELL HBL1223-I, OR EQUAL
- RECEPTACLES:
 - NEMA 5-20R: HUBBELL 5362I, OR EQUAL
 - NEMA 5-20R-IG: HUBBELL IG-5362, OR EQUAL
 - NEMA 5-20R-IG/SS: HUBBELL IG-5362-OS, OR EQUAL
 - NEMA 5-20R-GFCI: HUBBELL GF5362-I, OR EQUAL
 - NEMA 5-20R: HUBBELL 5424-I, OR EQUAL
 - OTHERS: COMMERCIAL OR INDUSTRIAL GRADE, UL LISTED, FEDERAL SPECIFICATION W0596F.
- WP PLATES: WEATHERPROOF COVERS ARE PERMITTED UNDER NEC ARTICLE 406.8(B)(1).
- NATIONAL ACCOUNT: REFER TO THE NATIONAL ACCOUNT DIRECTORY. THE FOLLOWING EQUIPMENT MAY BE AVAILABLE: MAIN SERVICE PANELBOARD WITH BREAKERS INSTALLED, LIGHTING AND DISTRIBUTION PANELBOARDS WITH BREAKERS INSTALLED, ROOF-TOP DISCONNECTS FOR HVAC UNITS AND KITCHEN HOOD FANS, LIGHTING CONTACTOR PANEL, AND SHUNT TRIP SYSTEMS (IF REQUIRED PER LOCAL CODE).
- EXCAVATIONS: PERFORM ALL NECESSARY EXCAVATING AND BACK-FILLING REQUIRED FOR THIS INSTALLATION. ALL EXCAVATIONS BELOW THE BOTTOM OF FOOTINGS SHALL BE BACKFILLED WITH 3000 PSI CONCRETE. WHERE DITCHES ARE CUT FOR OUTSIDE RUNS OF CONDUIT, REPLACE AND TAMP THE EARTH IN 12" LAYERS AND LEAVE THE GROUND LEVEL AND EQUAL TO ITS ORIGINAL CONDITION.
- CONDUIT AND FITTINGS: CONDUIT PERMITTED: (A) RIGID GALVANIZED STEEL (RGS), (B) EMT, (C) PVC, AND (D) ENT. TYPES UTILIZED SHALL BE RUN ONLY AS PERMITTED PER CODE. ALL WIRING SHALL BE RUN IN CONDUIT, CONDUIT PLACED IN CONCRETE OR RUN UNDERGROUND SHALL BE RIGID GALVANIZED CONDUIT OR PVC. IF PVC IS USED, ALL ELBOWS, SWEEPS AND STUB-UPS SHALL BE RGS. CONDUIT EXPOSED OR RUN IN MASONRY WALLS ABOVE GRADE MAY BE PVC OR EMT WHERE ALLOWED BY LOCAL CODES. IF EMT IS NOT PERMITTED, RIGID SCREWED GALVANIZED PIPE CONDUIT AND FITTINGS SHALL BE USED. IF SHIELDED CABLE IS REQUIRED FOR CONTROL CIRCUITRY, IT SHALL BE THE ONLY ANY NEUTRAL COLOR OTHER THAN THAT AS SPECIFIED FOR POWER DISTRIBUTION. NO CONDUIT SMALLER THAN 3/4" SHALL BE INSTALLED EXCEPT FOR TWO-WIRE SWITCH LEGS. ALL CONDUIT BENDS SHALL BE FREE FROM DENTS AND KINKS. ALL CONDUITS SHALL BE ELECTRICAL CONTINUOUS FROM THE SERVICE EQUIPMENT TO ALL OUTLETS, AND SHALL BE SECURED TO ALL METAL BOXES WITH ONE LOCK NUT OUTSIDE, AND ONE INSIDE THE BOX WITH A REINFORCED BAKELITE BUSHINGS. IF PVC OR ENT IS USED, WHEN APPROPRIATE SIZED, ELECTRICALLY CONTINUOUS, BOND WIRE SHALL BE RUN FROM THE SERVICE EQUIPMENT TO ALL OUTLETS. ALL SHALL BE SECURED TO EACH WIRING DEVICE PER THE NATIONAL ELECTRICAL CODE, WHERE CONNECTIONS ARE TO BE MADE.

- BETWEEN CONDUIT TERMINATIONS AND MOTORS, EQUIPMENT, OR APPARATUS NECESSITATING FLEXIBLE CONNECTIONS, APPROVED FLEXIBLE CONDUIT SHALL BE USED. OUTDOOR CONNECTIONS TO FANS, HVAC UNITS, OR ROTATING EQUIPMENT SHALL BE MADE WITH HELICAL WOUND LIQUIDTIGHT FLEXIBLE STEEL CONDUIT. EXPOSED CONDUIT SHALL BE SUITABLY SUPPORTED AT INTERVALS NOT TO EXCEED FIVE (5) FEET. DURING CONSTRUCTION, CONDUIT SHALL BE KEPT FREE OF ALL FOREIGN MATTER BY USE OF CARPETED BUSHINGS AND TURNED UP ENDS. PAPER OR WOOD PLUGS ARE NOT ACCEPTABLE FOR THIS PURPOSE.
- WIRE AND CABLES: ALL WIRE AND CABLES SHALL BE UNDERWRITERS LABORATORIES LISTED, AND LABELED, AND CONFORM WITH APPLICABLE STANDARDS OF UL (44, AND 83), NEMA (WC-5, AND WC-7), IPCEA (S-61-402, AND S-66-524), FEDERAL SPECIFICATIONS (J-C-30A(1), AND HH-1596C), ANSI, AND OTHER APPLICABLE INDUSTRY STANDARDS. CONNECTORS AND LUGS SHALL MEET UL PUBLICATION 486. ALL BRANCH CIRCUIT WIRING SHALL BE 600 VOLT, COPPER, 75 DEGREE C (MIN), TYPE THHN/THWN WITH A MINIMUM SIZE OF #12 AWG, UNLESS NOTED OTHERWISE. WIRE SIZES OF #8 AWG AND LARGER SHALL BE STRANDED COPPER, 75 DEGREE C (MIN), TYPE XHHW. ALL CIRCUITS SHALL HAVE A SEPARATE GROUND CONDUCTOR. PROVIDE GREEN-INSULATED GROUND WIRE IN ALL RACEWAYS, CABLE ASSEMBLIES, AND WHERE NOTED. SIZE EQUIPMENT GROUNDS PER TABLE 250-122 OF THE NATIONAL ELECTRICAL CODE. INSULATION COLOR CODES SHALL BE BLACK, RED, AND BLUE (PHASE), WHITE (NEUTRAL), AND GREEN (GROUND).
- ALL WIRING SHALL BE INSTALLED IN CONDUIT, EXCEPT WHERE SPECIFICALLY SHOWN ON THE DRAWINGS. NON-METALLIC SHEATHED (TYPE NM) CABLE IS NOT PERMITTED.
- ALL BRANCH CIRCUIT, COMMUNICATION, SIGNALING, AND CONTROL WIRING TO KITCHEN, FIRE PROTECTION, AND OTHER EQUIPMENT SHALL BE ROUTED ABOVE THE CEILING. VERIFY WHETHER OR NOT THE SPACE ABOVE THE CEILING IS USED AS A SPACE FOR RETURN AIR FOR THE ENVIRONMENTAL AIR SYSTEM. IF IT IS USED FOR RETURN AIR, PROVIDE APPROVED RACEWAYS FOR ALL OVERHEAD WIRING PER NEC ARTICLE 300-22(B). IF IT IS NOT OTHER SPACE USED FOR ENVIRONMENTAL AIR, APPROVED LOW VOLTAGE CABLES MEETING THE REQUIREMENTS OF NEC ARTICLES 725 AND 760 MAY BE RUN WITHOUT RACEWAYS, UNO. ALL SAFETY CONTROL WIRING FOR FIRE PROTECTION SYSTEMS, SHUNT TRIPS, ETC. SHALL BE RUN IN A RACEWAY IN ACCORDANCE WITH NEC ARTICLES 725.25 AND 725.28.
- SITE LIGHTING: THE NATIONAL ACCOUNT VENDOR SHALL FURNISH THE SITE LIGHTING PACKAGE, AS REQUIRED FOR THE SPECIFIC LOCATION. UNDER THIS SPECIFICATION SECTION, PROVIDED ARE 1" RIGID GALVANIZED STEEL ELECTRICAL CONDUIT, AND THE REQUIRED WIRING FROM THE PANEL TO THE POLE. SET FIXTURES AND POLES ON CONCRETE BASES, AS PROVIDED UNDER SPECIFICATION SECTION 3A. CONCRETE. GROUND/BOND ALL SITE LIGHTING FIXTURE POLES PER THE NEC. THE BRANCH CIRCUIT CONDUCTORS SHALL BE INCREASED FROM #10 AWG TO #8 AWG IF THE HORIZONTAL DISTANCE FROM THE PANEL TO THE POLE IS GREATER THAN EIGHTY (80) FEET. ALL SITE LIGHTING SHALL BE CONTROLLED THROUGH THE LIGHTING CONTROL SYSTEM SHOWN ON THE DRAWINGS. REFER TO THE SITE PLAN FOR QUANTITY AND LOCATION OF ALL SITE LIGHTING. SET FIXTURES AS SPECIFIED, AND AIM AFTER DARK FOR UNIFORM LIGHT DISTRIBUTION. THE NATIONAL ACCOUNT VENDOR SHALL PROVIDE A SITE PHOTOMETRIC AT NO COST, WHICH MAY BE PART OF CONSTRUCTION DOCUMENTS SET, BUT SHALL BE SUBMITTED TO POPEYES DESIGN FOR THEIR RECORDS.
- SIGNAGE LIGHTING: PROVIDE A 1" RIGID GALVANIZED STEEL ELECTRICAL CONDUIT, AND WIRE, FROM THE PANEL TO ALL ILLUMINATED SIGNS AS SHOWN ON THE LIGHTING AND SITE PLAN. GROUND/BOND EACH SIGN. SIGNS SHALL BE FINISHED AND INSTALLED BY THE SIGN COMPANY BY THE GC, OR UNDER A SEPARATE CONTRACT WITH THE SIGNER. POWER AND WIRING SHALL BE FURNISHED AND INSTALLED UNDER THIS SECTION OF THE SPECIFICATIONS.

- OTHER WIRING:
- FURNISH AND INSTALL ALL POWER WIRING AND CONDUIT AS INDICATED ON THE DRAWINGS FOR ROOF-TOP HVAC EQUIPMENT, KITCHEN HOOD FANS, AND WALK-IN FREEZER AND COOLER EQUIPMENT. DISCONNECT SWITCHES, AVAILABLE FROM THE NATIONAL ACCOUNT, SHALL BE FURNISHED AND INSTALLED FOR EACH UNIT OF HVAC EQUIPMENT, AND FOR KITCHEN EQUIPMENT WITHOUT A CORD AND PLUG. BEFORE ENERGIZING ANY EQUIPMENT, VERIFY THAT THE CORRECT POWER SUPPLY VOLTAGE, AMPACITY, AND PHASING HAS BEEN PROVIDED AT THE LOAD SIDE OF THE DISCONNECT.
 - FURNISH AND INSTALL THE LIGHTING CONTACTOR PANEL, AND ALL ASSOCIATED POWER WIRING, AS INDICATED. THE LIGHTING CONTACTOR PANEL IS CUSTOM BUILT, AND AVAILABLE FROM THE NATIONAL ACCOUNT.
 - EMPTY CONDUIT: LEAVE A #12 AWG PULL WIRE IN ALL EMPTY CONDUITS.
 - BOXES AND WIREWAYS: ALL JUNCTION BOXES, PULL BOXES, WIREWAYS, ETC. SHALL BE SIZED IN ACCORDANCE WITH THE NATIONAL ELECTRICAL CODE.
 - EQUIPMENT IDENTIFICATION: PROVIDE NAMEPLATES FOR ALL PANELBOARDS, CONTROLS, AND OTHER ELECTRICAL EQUIPMENT. EQUIPMENT VISIBLE TO THE PUBLIC SHALL BE IDENTIFIED WITH ENGRAVED LAMINATED NAMEPLATES ATTACHED WITH STAINLESS STEEL FASTENERS. ELECTRICAL EQUIPMENT NOT VISIBLE TO THE PUBLIC MAY BE NEATLY IDENTIFIED WITH BLACK PERMANENT MARKERS.

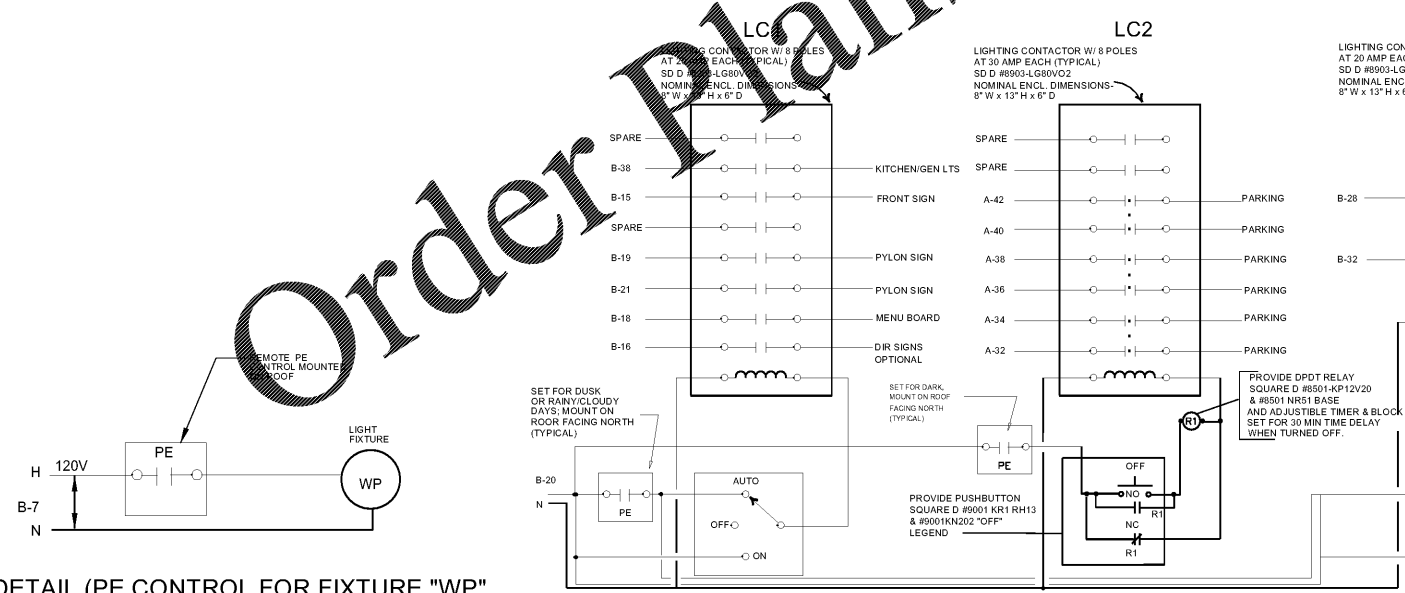
PART III. EXECUTION

- TESTS: MAKE ALL TESTS NECESSARY TO ENSURE THAT THE ENTIRE INSTALLATION IS FREE FROM IMPROPER CONNECTIONS, AND FROM SHORTED AND/OR OPEN CONDUCTORS. VOLTAGE, CURRENT, AND ROTATION TESTS SHALL BE MADE BEFORE ANY MOTORS ARE PLACED IN OPERATION. ALL LOADS SHALL BE BALANCED ACROSS PHASES. CHECK TO SEE THAT ALL CIRCUITS WORK, AND ARE CONTROLLED BY SWITCHES INDICATED ON DRAWINGS, OR CIRCUIT BREAKERS SO INDICATED ON PANEL SCHEDULE.
- GUARANTEE: FURNISH A GUARANTEE IN WRITING TO THE OWNER THAT ALL WORK EXECUTED UNDER THIS SECTION IS FREE FROM DEFECTS OF MATERIALS AND WORKMANSHIP FOR A PERIOD OF ONE (1) YEAR FROM THE DATE OF FINAL ACCEPTANCE. ADDITION, DURING THE TERM OF THIS GUARANTEE, THE OWNER AND/OR REPLACEMENT OF AN EXISTING WORK, AND ALL RESULTING DAMAGES SHALL BE MADE AT NO ADDITIONAL EXPENSE TO THE OWNER.
- TEMPORARY POWER: AT THE PROJECT SITE, PROVIDE A 100 AMP, 120/240 VOLT, SINGLE PHASE SERVICE WITH POWER OUTLETS. DEDICATE FOR TEMPORARY CONSTRUCTION POWER. TEMPORARY WIRING SHALL BE MAINTAINED IN ALL AREAS OF THE BUILDING UNTIL PERMANENT POWER SOURCES HAVE BEEN INSTALLED. TEMPORARY SERVICE SHALL BE PROVIDED UNDER SECTION 16 OF THESE SPECIFICATIONS.
- CLEAN-UP: LEAVE THE ELECTRICAL PORTION OF THE WORK IN A CLEAN AND FINISHED CONDITION.
- AS-BUILT DRAWINGS: MAINTAIN AS-BUILT DRAWINGS, UPDATED DAILY DURING CONSTRUCTION, AND PRESENT THE OWNER WITH ONE SET UPON COMPLETION. PROVIDE THE OWNER'S PERSONNEL WITH ON-SITE INSTRUCTION IN THE OPERATION AND MAINTENANCE OF THE COMPLETED ELECTRICAL SYSTEM.

LEGEND

ELECTRICAL SYMBOLS

- [Symbol] SINGLE FACE EXIT LIGHT W/EMERGENCY BATTERY PACK AND TWO (2) EMERGENCY LIGHT HEADS. SEE FIXTURE SCHEDULE
- [Symbol] BRACKET OR WALL MOUNTED LIGHT FIXTURE. LETTER DENOTES MARK, SEE FIXTURE SCHEDULE.
- [Symbol] LED LIGHT FIXTURE ON NIGHT LIGHT CIRCUIT.
- [Symbol] LED LIGHT FIXTURE
- [Symbol] PENDANT LIGHT FIXTURE.
- [Symbol] 16" PENDANT LIGHT FIXTURE.
- [Symbol] 6" LED DOWNLIGHT
- [Symbol] 6" ADJUSTABLE LED DOWNLIGHT
- [Symbol] TOGGLE SWITCH - SINGLE POLE - HUBBELL HBL1221-I.
- [Symbol] DUPLEX RECEPTACLE. SUBSCRIPT INDICATES LIGHTING HEIGHT. IF DIFFERENT THAN SPECIFIED, HUBELL #5362.
- [Symbol] DUPLEX RECEPTACLE - IN WEATHER PROOF ENCLOSURE OR COVER. GROUND FAULT INTERRUPTER.
- [Symbol] RECEPTACLE FLUSH MOUNTED IN CEILING. VERIFY EXACT LOCATION AND NEMA CONFIGURATION.
- [Symbol] DUPLEX RECEPTACLE - ISOLATED GROUND SURGE PROTECTED - HUBBELL #IG-5362-OSP FOR POS EQUIP. & PRINTERS
- [Symbol] DUPLEX RECEPTACLE - ISOLATED GROUND SURGE PROTECTED; MOUNTED IN CEILING. HUBBELL #IG-5362-OSP FOR MONITORS
- [Symbol] QUAD RECEPTACLE AS LOCATED ON DRAWINGS
- [Symbol] SPECIAL PURPOSE RECEPTACLE
- [Symbol] 208/120 PANELBOARD.
- [Symbol] DISCONNECT SWITCH SIZE AS NOTED.
- [Symbol] DOOR SWITCH MOUNTED IN DOOR FRAME (F.B.C.)
- [Symbol] SEE ELECTRICAL NOTES.
- [Symbol] A.F.C. ABOVE FINISHED CEILING.
- [Symbol] F.B.C. FURNISHED BY CONTRACTOR.
- [Symbol] G.F.I. GROUND FAULT INTERRUPTING WEATHERPROOF
- [Symbol] CONDUIT RUN CONCEALED IN WALLS OR CL. SPACES. ARROWS INDICATE HOMERUNS. SUBSCRIPT INDICATES PANEL AND CIRCUIT NUMBERS. SLASH MARKS INDICATE NUMBER OF CONDUCTORS. EQUIPMENT GROUNDING CONDUCTOR REQUIRED IN ALL CONDUITS NOT INDICATED WITH WITH HASHMARK.
- [Symbol] SAME AS ABOVE NOTE EXCEPT RUN CONDUIT BELOW FLOOR
- [Symbol] EXHAUST FAN.
- [Symbol] SUPPLY FAN.
- [Symbol] JUNCTION OR OUTLET BOX.
- [Symbol] JUNCTION JBOX FOR SIGN-MOUNT SWITCH NEAR SIGN. MAKE ALL CONNECTIONS REQ'D. VERIFY ALL ASPECTS WITH SIGNAGE VENDOR. SEE ARCHITECTURAL ELEVATIONS FOR HEIGHT AND LOCATION AS SHOWN.
- [Symbol] JUNCTION BOX FOR SMOKE DETECTOR (F.B.C.) 120V WIRING BY THIS CONTRACTOR.
- [Symbol] COMBINATION DUAL DATA OUTLET AND TELEPHONE OUTLET HEIGHT AS NOTED ON PLANS WITH 3/4" EMPTY CONDUIT TO ABOVE CEILING. PROVIDE PULL WIRE.
- [Symbol] TELEPHONE OUTLET, WALL TYPE, 24" AFF UN O ON PLANS WITH 3/4" EMPTY CONDUIT TO ABOVE CEILING. PROVIDE PULL WIRE.
- [Symbol] PROVIDE 'ON/OFF' SELECTOR SWITCH AND PILOT LIGHT IN NEMA 4 STAINLESS STEEL ENCLOSURE MOUNTED ON THE FACE OF THE HOOD. PROVIDED BY HOOD MANUFACTURER.
- [Symbol] SPEAKER, CEILING MOUNTED
- [Symbol] SPEAKER OUTLET IN WALL STUB 3/4" CONDUIT TO SPACE ABOVE ACCESSIBLE CEILING. PROVIDE PULL WIRE.



1 1/4"=1'-0"
DETAIL (PE CONTROL FOR FIXTURE "WP")

2 1/4"=1'-0"
LIGHTING CONTACTOR DIAGRAM

POPEYES
 505 BLUE ISLAND DRIVE
 MIAMI, FLORIDA 33128

THESE DRAWINGS ARE THE PROPERTY OF ARCHITRAVE GROUP PC AND SHALL NOT BE USED OR REPRODUCED WITHOUT THE EXPRESS WRITTEN PERMISSION FROM THE OWNER.

Architrave GROUP PC
 Suite 107
 157 Broad Street
 Phone (732) 212-0007 Fax (732) 212-0059
 NJ 08104
 JOSE C. SANTIAGO, RA - NJ 08104
 PA 14432055, RA - NJ 08104
 MD 16687 VA 01862 NC 12765
 NY 52665 SC 507100815

POPEYES
 1702 RALEIGH ROAD PKY NW
 WILSON, NORTH CAROLINA
 LOUISIANA KITCHEN PLK DESIGN STANDARDS
 83 SEATS / DUAL-LINE PRODUCTION / PLK171-DL

LOUISIANA KITCHEN

POPEYES

REVISIONS

03/11/20

SHULTZ ENGINEERING GROUP
 212 N. McDowell St, Suite 204
 Charlotte, NC 28204
 (P) 704.334.7363 (F) 704.347.0093
 www.shultzeg.com | SEG - 20-078
 NC FIRM LICENSE NUMBER: C-0898

E0

DATE: 3/11/2020
 PROJECT NO: G20-05
 CHECKED:RR