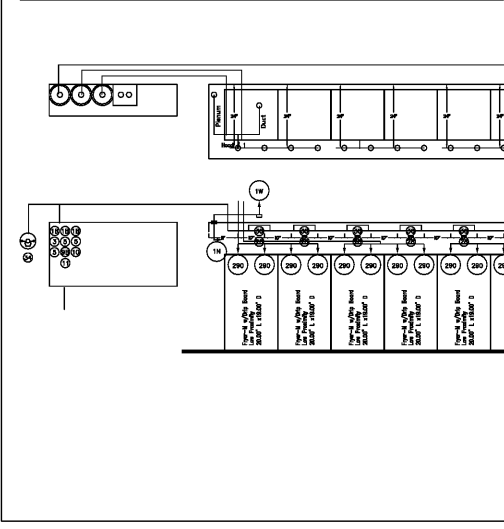
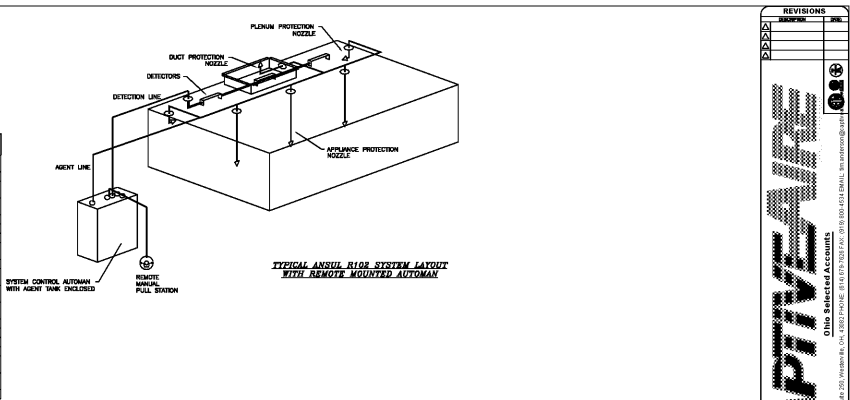


REV	NO.	DATE	DESCRIPTION
1	1	2/9/2016	ISSUE FOR PERMIT

REV	NO.	DATE	DESCRIPTION
1	1	2/9/2016	ISSUE FOR PERMIT

REV	NO.	DATE	DESCRIPTION
1	1	2/9/2016	ISSUE FOR PERMIT



NOTES:

- FIELD PIPE DROPS AS SHOWN
- SLEEVING, ELBOWS, TEES, AND NOZZLES SUPPLIED BY GAS
- RELOCATE NOZZLES IF FLOW PATTERN IS BLOCKED BY SLEEVING, SALAMANDERS, ETC.
- MINIMUM 5' ELBOWS IN SUPPLY LINE
- MINIMUM 72" BENDS OF AGENT LINE FROM TANK TO FIRST NOZZLE
- IF APPLICABLE, PRE-FRIGED CHAMBERED DROPS ARE SHIPPED LOOSE
- FACTORY PIPING EXTENDS A MAXIMUM OF 6" ABOVE THE TOP OF THE HOOD
- APPLIANCE DIMENSIONS LISTED REPRESENT THE COOKING SURFACE SIZE, NOT THE OVERALL APPLIANCE SIZE
- THIS FIRE SYSTEM COMPLIES WITH ULL 300 REQUIREMENTS

LEGEND - WALL MOUNTED ANNUL SYSTEM

- 1A 1.5 GALLON TANK
- 2 AUTOMAX RELEASE
- 3 GALLON TANK ENCLOSURE
- 4 REGULATED ACTUATOR
- 5 ANSULOX LIQUID AGENT (3 GAL.)
- 6 ANSULOX LIQUID AGENT (1.5 GAL.)
- 7 CARTRIDGE (101-10)
- 8 CARTRIDGE (101-10)
- 9A CARTRIDGE (LT-A-101-30)
- 9B DOUBLE TANK CARTRIDGE
- 10 TEST LINK
- 11 DOUBLE MICROSWITCH
- 12 DETECTOR BRACKET
- 13 NOZZLE ASSEMBLY (418330)
- 14 NOZZLE ASSEMBLY (418330)
- 15 NOZZLE ASSEMBLY (418330)
- 16 NOZZLE ASSEMBLY (418330)
- 17/24 NOZZLE ASSEMBLY (418330)
- 245 NOZZLE ASSEMBLY (418340)
- 230 NOZZLE ASSEMBLY (418340)
- 2120 NOZZLE ASSEMBLY (418340)
- 280 NOZZLE ASSEMBLY (418341)
- 28 DETECTOR BRACKET
- 29 LOW TEMP FUSIBLE LINK
- 30 HIGH TEMP FUSIBLE LINK
- 30V MECHANICAL GAS VALVE
- EDV ELECTRICAL GAS VALVE
- 34 REMOTE MANUAL PULL STATION SWIVEL ADAPTOR

REVISIONS

NO.	DATE	DESCRIPTION
1	2/9/2016	ISSUE FOR PERMIT

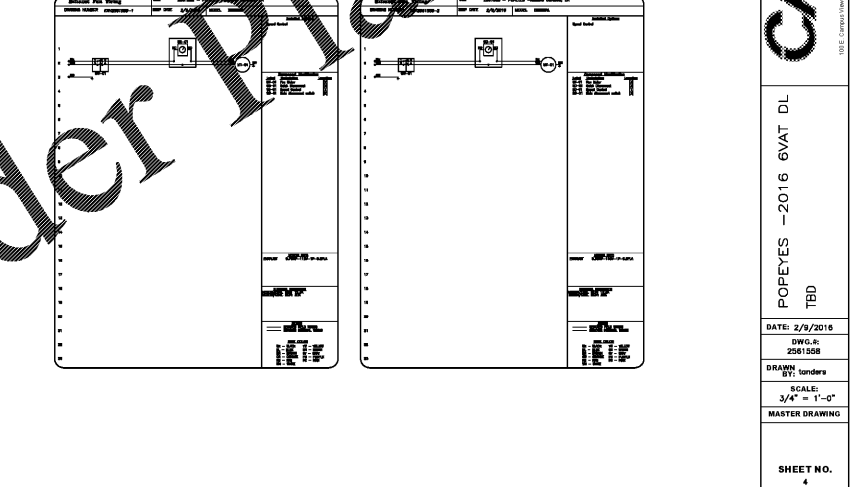
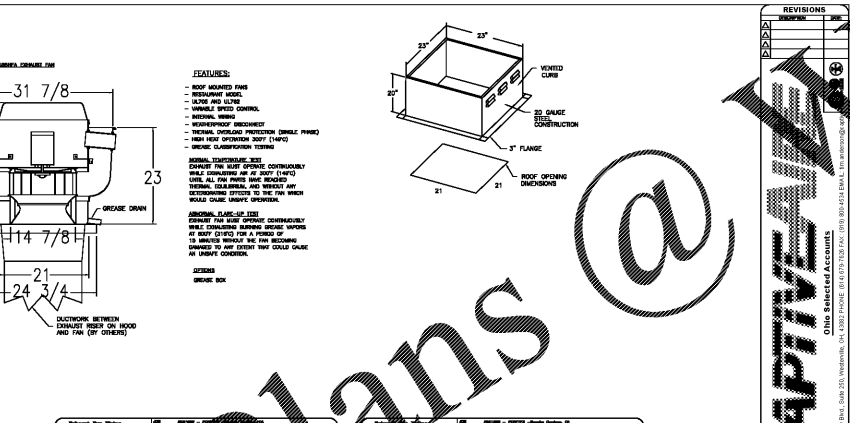
POPEYES - 2016 6VAT DL
TBD

DATE: 2/9/2016
DWG. NO: 2561508
DRAWN BY: [Name]
SCALE: 3/4" = 1'-0"
MASTER DRAWING

SHEET NO. 2

REV	NO.	DATE	DESCRIPTION
1	1	2/9/2016	ISSUE FOR PERMIT

REV	NO.	DATE	DESCRIPTION
1	1	2/9/2016	ISSUE FOR PERMIT



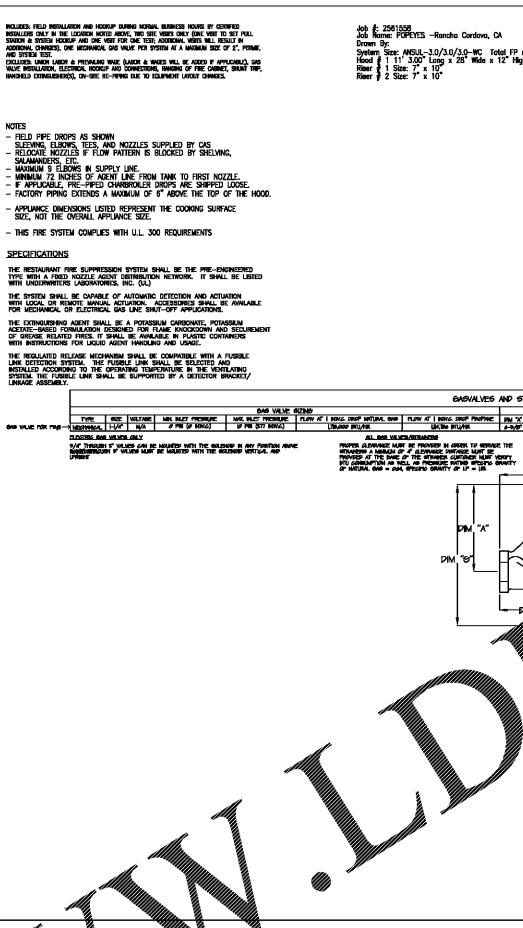
REVISIONS

NO.	DATE	DESCRIPTION
1	2/9/2016	ISSUE FOR PERMIT

POPEYES - 2016 6VAT DL
TBD

DATE: 2/9/2016
DWG. NO: 2561508
DRAWN BY: [Name]
SCALE: 3/4" = 1'-0"
MASTER DRAWING

SHEET NO. 4

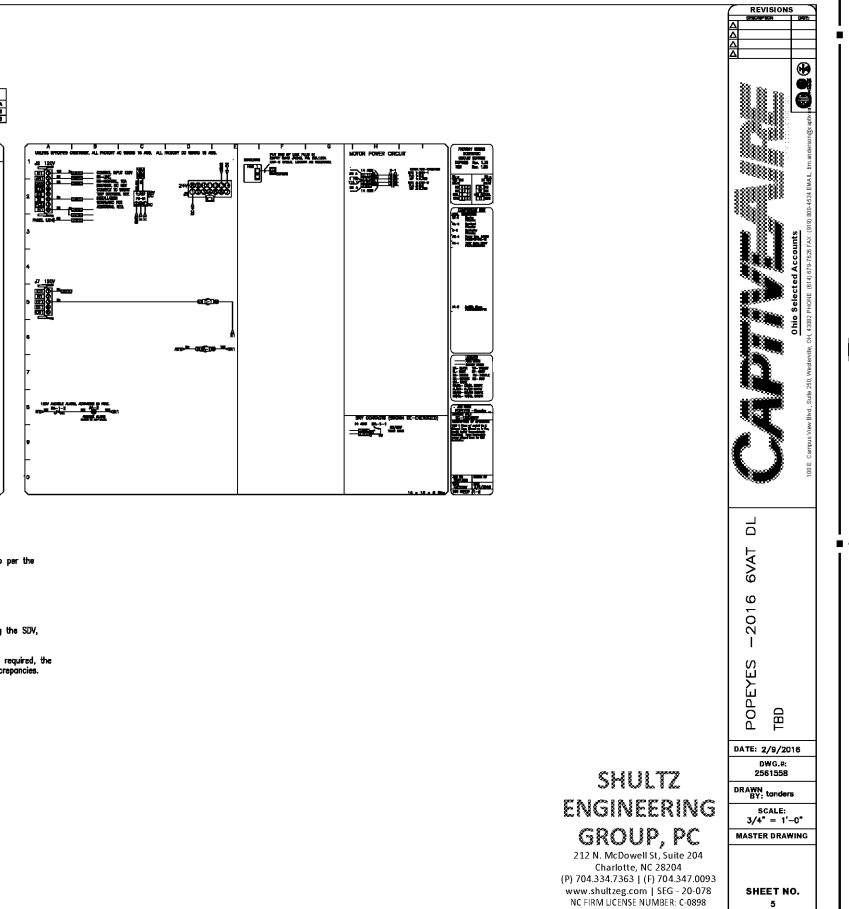
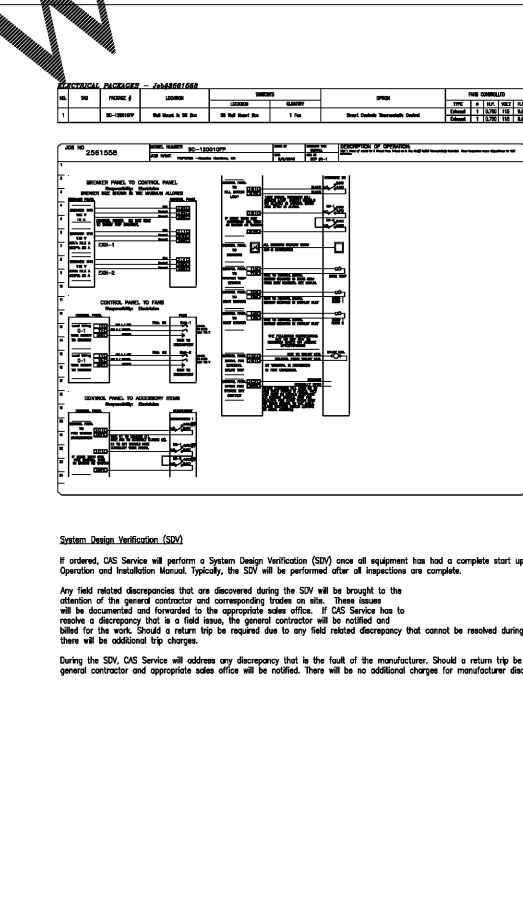


NOTES:

- FIELD PIPE DROPS AS SHOWN
- SLEEVING, ELBOWS, TEES, AND NOZZLES SUPPLIED BY GAS
- RELOCATE NOZZLES IF FLOW PATTERN IS BLOCKED BY SLEEVING, SALAMANDERS, ETC.
- MINIMUM 5' ELBOWS IN SUPPLY LINE
- MINIMUM 72" BENDS OF AGENT LINE FROM TANK TO FIRST NOZZLE
- IF APPLICABLE, PRE-FRIGED CHAMBERED DROPS ARE SHIPPED LOOSE
- FACTORY PIPING EXTENDS A MAXIMUM OF 6" ABOVE THE TOP OF THE HOOD
- APPLIANCE DIMENSIONS LISTED REPRESENT THE COOKING SURFACE SIZE, NOT THE OVERALL APPLIANCE SIZE
- THIS FIRE SYSTEM COMPLIES WITH ULL 300 REQUIREMENTS

LEGEND - WALL MOUNTED ANNUL SYSTEM

- 1A 1.5 GALLON TANK
- 2 AUTOMAX RELEASE
- 3 GALLON TANK ENCLOSURE
- 4 REGULATED ACTUATOR
- 5 ANSULOX LIQUID AGENT (3 GAL.)
- 6 ANSULOX LIQUID AGENT (1.5 GAL.)
- 7 CARTRIDGE (101-10)
- 8 CARTRIDGE (101-10)
- 9A CARTRIDGE (LT-A-101-30)
- 9B DOUBLE TANK CARTRIDGE
- 10 TEST LINK
- 11 DOUBLE MICROSWITCH
- 12 DETECTOR BRACKET
- 13 NOZZLE ASSEMBLY (418330)
- 14 NOZZLE ASSEMBLY (418330)
- 15 NOZZLE ASSEMBLY (418330)
- 16 NOZZLE ASSEMBLY (418330)
- 17/24 NOZZLE ASSEMBLY (418330)
- 245 NOZZLE ASSEMBLY (418340)
- 230 NOZZLE ASSEMBLY (418340)
- 2120 NOZZLE ASSEMBLY (418340)
- 280 NOZZLE ASSEMBLY (418341)
- 28 DETECTOR BRACKET
- 29 LOW TEMP FUSIBLE LINK
- 30 HIGH TEMP FUSIBLE LINK
- 30V MECHANICAL GAS VALVE
- EDV ELECTRICAL GAS VALVE
- 34 REMOTE MANUAL PULL STATION SWIVEL ADAPTOR



REVISIONS

NO.	DATE	DESCRIPTION
1	2/9/2016	ISSUE FOR PERMIT

POPEYES - 2016 6VAT DL
TBD

DATE: 2/9/2016
DWG. NO: 2561508
DRAWN BY: [Name]
SCALE: 3/4" = 1'-0"
MASTER DRAWING

SHEET NO. 8

SHULTZ ENGINEERING GROUP, PC
212 N. McDowell St., Suite 304
Charlotte, NC 28204
(P) 704.334.7363 | (F) 704.347.0093
www.shultzreg.com | SEC - 20-078
NC FIRM LICENSE NUMBER: C 0938

Order Plans @

WWW.LDILine.com

POPEYES
88 SEATS / DUAL-LINE PRODUCTION PLK1771+DL

LOUISIANA KITCHEN PLK DESIGN STANDARDS

POPEYES
1702 RALEIGH ROAD PKY NW
WILSON, NORTH CAROLINA

LOUISIANA KITCHEN
POPEYES

POPEYES - 2016 6VAT DL
TBD

DATE: 2/9/2016
DWG. NO: 2561508
DRAWN BY: [Name]
SCALE: 3/4" = 1'-0"
MASTER DRAWING

SHEET NO. 3

POPEYES - 2016 6VAT DL
TBD

DATE: 2/9/2016
DWG. NO: 2561508
DRAWN BY: [Name]
SCALE: 3/4" = 1'-0"
MASTER DRAWING

SHEET NO. 5

SHULTZ ENGINEERING GROUP, PC
212 N. McDowell St., Suite 304
Charlotte, NC 28204
(P) 704.334.7363 | (F) 704.347.0093
www.shultzreg.com | SEC - 20-078
NC FIRM LICENSE NUMBER: C 0938

POPEYES
1702 RALEIGH ROAD PKY NW
WILSON, NORTH CAROLINA

LOUISIANA KITCHEN
POPEYES

POPEYES - 2016 6VAT DL
TBD

DATE: 2/9/2016
DWG. NO: 2561508
DRAWN BY: [Name]
SCALE: 3/4" = 1'-0"
MASTER DRAWING

SHEET NO. 9