

HOOD INFORMATION - Job#2941439

HOOD NO.	TAG	MODEL	LENGTH	MAX. COOKING TEMP.	TOTAL EXH. CFM	EXHAUST PLENUM RISER(S)					HOOD CONSTRUCTION	HOOD CONFIG.		
						WIDTH	LENG.	HEIGHT	DIA.	CFM		S.P.	END TO END	ROW
1		2812 BLL	11' 3.00"	500 Deg.	1901	7"	10"	4"		950	-0.429"	304 SS	ALONE	ALONE
						7"	10"	4"		950	-0.429"	Where Exposed		

HOOD INFORMATION

HOOD NO.	TAG	FILTER(S)					LIGHT(S)			UTILITY CABINET(S)			FIRE SYSTEM PIPING	HOOD HANGING WGT	
		TYPE	QTY.	HEIGHT	LENGTH	EFFICIENCY @ 9 MICRONS	QTY.	TYPE	WIRE GUARD	LOCATION	SIZE	FIRE SYSTEM			ELECTRICAL
1		SS Baffle with Handles	8	10"	16"	30%	0			Wall Mnt	12"x36"x24"	Anslul R102	3.0/3.0/3.0		206 LBS

HOOD OPTIONS

HOOD NO.	TAG	OPTION
1		BACKSPASH 112.00" High X 208.00" Long 304 SS Vertical
2		OPTIONS ONLY: FIELD WRAPPER 22.50" High x 60.00" Long Left 304 SS
		OPTIONS ONLY: FIELD WRAPPER 22.50" High x 60.00" Long Right 304 SS
		OPTIONS ONLY: FIELD WRAPPER 22.50" High x 60.00" Long Left 304 SS
		OPTIONS ONLY: FIELD WRAPPER 22.50" High x 60.00" Long Right 304 SS
		OPTIONS ONLY: FIELD WRAPPER 37.00" High x 60.00" Long Front 304 SS
		OPTIONS ONLY: FIELD WRAPPER 37.00" High x 60.00" Long Front 304 SS
		OPTIONS ONLY: WRAPPER CHANNEL - 19.00" Long
		OPTIONS ONLY: WRAPPER CHANNEL - 19.00" Long
		OPTIONS ONLY: WRAPPER CHANNEL - 19.00" Long
		OPTIONS ONLY: WRAPPER CHANNEL - 19.00" Long
		OPTIONS ONLY: WRAPPER CHANNEL - 28.00" Long
		OPTIONS ONLY: WRAPPER CHANNEL - 28.00" Long

All enclosure panels 60" tall with vertical grain

BLL Series Specification

The BLL series hood is a low proximity passover type hood. Hood shall have size, shape and performance specified on drawings.

Construction shall be type 430 stainless steel with a #3 or #4 polish where exposed. All seams shall be welded and have stainless steel on exposed surfaces. Unexposed surfaces shall be constructed of aluminized steel. Individual component construction shall be determined by manufacturer and ETL. Construction shall be dependent on the structural application to minimize distortion and other defects. All seams, joints and penetrations of the hood enclosure to its lower outermost perimeter that directs and captures grease-laden vapor and exhaust gases shall have a liquid-tight continuous external weld in accordance with NFPA 96. Hood shall be wall type with provisions to screw to back wall.

Ventilator shall be furnished with UL classified aluminum baffle filters, supplied in size and quantity as required by ventilator. The filters shall extend the full length of the hood and the filter panels shall not be more than 6" in width.

The hood manufacturer shall supply complete computer generated submittal drawings including hood section view(s) and hood plan view(s). These drawings must be available to the engineer, architect and owner for their use in construction, operation and maintenance.

Exhaust duct collar to be 4" high with 1" flange. Duct sizes, CFM and static pressure requirements shall be as shown on drawings. Static pressure requirements shall be precise and accurate; air velocity and volume information shall be accurate within 1-ft increments along the length of the ventilator.

The hood shall have:
-A sloped grease drain system which shall be an enclosed integral part of the hood back with an exposed, removable 1/2 pint grease cup to facilitate cleaning.
-Low profile design to allow plate shelf and passover design.

The hood shall be ETL Listed as "Exhaust Hood Without Exhaust Damper", ETL Sanitation Listed and built in accordance with NFPA 96. The hood shall be listed for 400' F cooking surfaces at 110 CFM/ft.

System Design Verification (SDV)

If ordered, CAS Service will perform a System Design Verification (SDV) once all equipment has had a complete start up per the Operation and Installation Manual. Typically, the SDV will be performed after all inspections are complete.

Any field related discrepancies that are discovered during the SDV will be brought to the attention of the general contractor and corresponding trades on site. These issues will be documented and forwarded to the appropriate sales office. If CAS Service has to resolve a discrepancy that is a field issue, the general contractor will be notified and billed for the work. Should a return trip be required due to any field related discrepancy that cannot be resolved during the SDV, there will be additional trip charges.

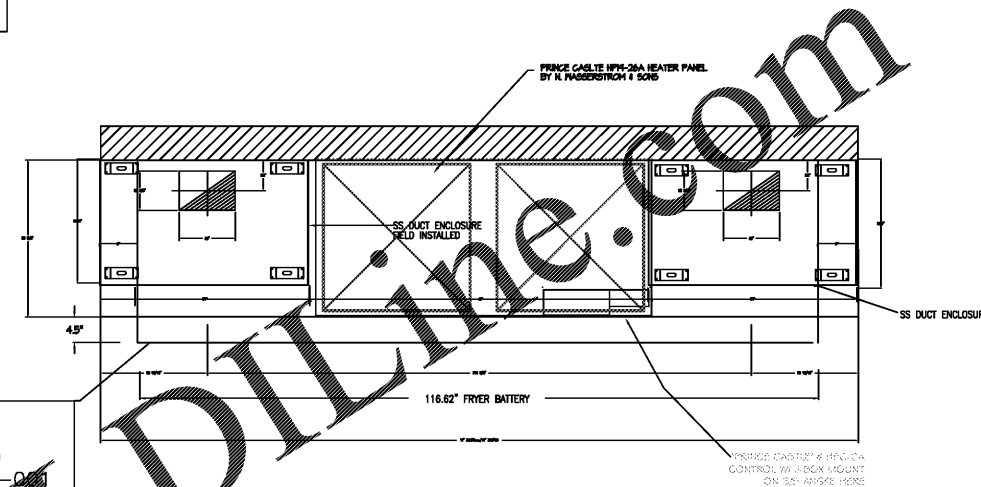
During the SDV, CAS Service will address any discrepancy that is the fault of the manufacturer. Should a return trip be required, the general contractor and appropriate sales office will be notified. There will be no additional charges for manufacturer discrepancies.

FRYER BATTERY WITH MINIMUM 2" MIN. SIDE OVERHANG AND 4.5" FRONT UNDERHANG BY HOOD PER ETL LISTING FILE #3054804-001

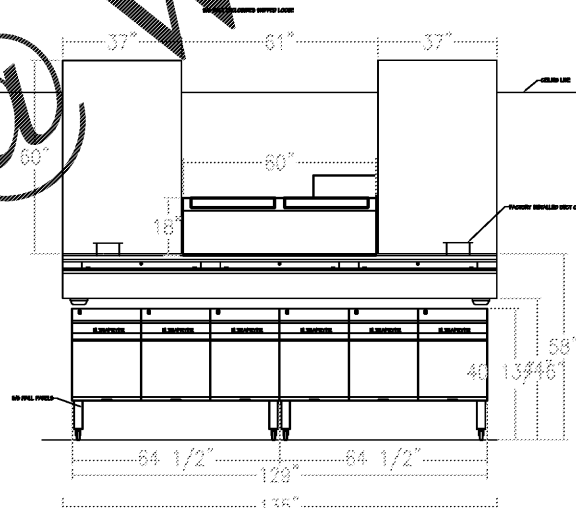
Backshelf Exhaust-Only ETL Ratings - File 3054804-00

HOOD MODEL	MAX TEMP	MAX EXH. CFM/FT	LENGHT RANGE	MAX LENGTH FOR 1 RISER	MIN. RANGE	WILD INCH	SIZE OVERHANG	FRONT OVERHANG	VERTICLE CLEARANCE WITH LIGHTS	VERTICLE CLEARANCE WITHOUT LIGHTS
BLL	400DEG	110	3'-24"	36"-36"			2"	-4.5"	-	8"-26"

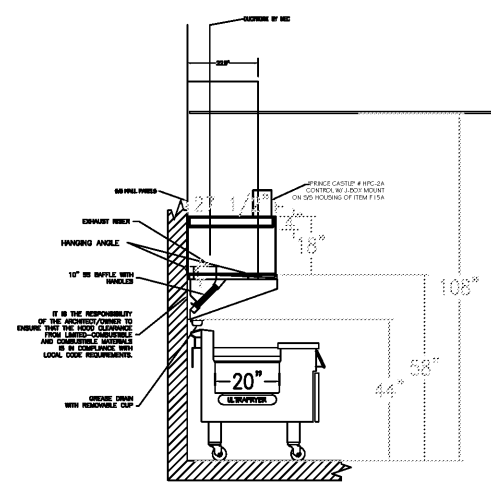
All enclosure panels 60" tall with vertical grain



PLAN VIEW - Hood #1
11' 3.00" LONG 2812BLL



SECTION VIEW - MODEL 2812BLL



SECTION VIEW - MODEL 2812BLL

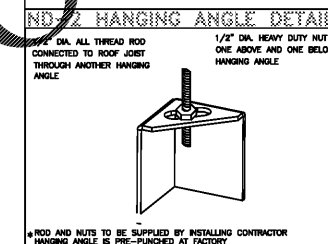
GENERAL NOTES

INSTALLATION

- ALL ELECTRICAL "FIELD" CONNECTIONS AND RELATED INTERCONNECTIONS BY ELECTRICAL CONTRACTORS.
- ALL PLUMBING "FIELD" CONNECTIONS AND RELATED INTERCONNECTIONS BY PLUMBING CONTRACTORS.
- HANGING BRACKETS LOCATED AND WELDED AS SHOWN ON PLANS. ALL OTHER HANGER MATERIALS PROVIDED BY INSTALLING CONTRACTORS.
- ALL CONNECTIONS FROM CAPTIVE-AIR DUCT PER MECHANICAL CONTRACTOR'S PLAN.
- COOKING EQUIPMENT TO SHUTOFF IN EVENT OF FIRE.
- EXHAUST FANS TO TURN ON IN EVENT OF FIRE.
- ALL LIGHTS FIXTURE SHOWN INSTALLED BY CAPTIVE-AIR ARE FACTORY PREWIRED. INTERCONNECTIONS BETWEEN HOODS AND TO SWITCHES BY ELECTRICAL CONTRACTOR.
- LAMPS FOR LIGHT FIXTURES BY INSTALLING CONTRACTOR.
- SEALING RESTAINS ARE RESPONSIBILITY OF INSTALLING CONTRACTOR.
- INSTALLING CONTRACTORS ASSUME ALL RELATED RESPONSIBILITY FOR VERIFICATION OF DIMENSIONAL DATA CONTAINED ON THESE DOCUMENTS FOR ACCURACY, INTEGRATION, AND ADMINISTRATION OF CODE REQUIREMENTS IN EFFECT PRIOR TO ANY RELEASE FOR PRODUCTION OF EQUIPMENT SHOWN.

- BALANCE**
- KITCHEN HOODS MUST BE BALANCED WITH KITCHEN.
 - KITCHEN SHALL BE NEGATIVE WITH RESPECT TO DRINK AREA.
 - RESTAURANT SHALL BE POSITIVE WITH RESPECT TO AMBIENT PRESSURE.

- ADDITIONAL**
- WRITTEN HOOD DIMENSIONS HAVE PRECEDENCE OVER SCALE.
 - SIGNED AND "APPROVED" COPIES OF THIS DOCUMENT SHALL BE PROVIDED TO THE ARCHITECT PRIOR TO COMMENCEMENT OF CONSTRUCTION.



HOOD STYLE	DIM FROM REAR	DIM FROM FRONT (24\"/>	
CANOPY ND2	4.166"	2.246"	2.246"
ND2-PSP-F	4.166"	2.246"	2.246"
BACKSHELF BD-2	4.166"	2.246"	-
VHB/VHB-G	36"x36"	42"x42"	48"x48"
FRONT/BACK DIMS BY SIZE	2.246"	2.246"	2.246"

CALCULATIONS UTILIZED	
EXHAUST CFM=LENGTH OF HOOD X CFM/LIN.FT. (LOAD)	
SUPPLY CFM=EXHAUST CFM X PERCENTAGE REQUIRED	
TOTAL DUCT AREA=144 X CFM	
DUCT LENGTH= TOTAL DUCT AREA / DUCT DEPTH	
*CAPTIVE-AIR DUCT CONNECTION SIZES ARE CALCULATED USING AN EXHAUST VELOCITY OF 1000-1500 FPM AND A SUPPLY VELOCITY OF 300-400 FPM.	
BUILDING CODES	
CAPTIVE-AIR HOODS ARE BUILT IN COMPLIANCE WITH:	
ETL	UL
ETL	UL
ETL	UL
ETL	UL
Listed under ETL File number 3054804-001/002	

CLEARANCE TO COMBUSTIBLES	
CAPTIVE-AIR HOODS HAVE OPTIONAL CLEARANCE REDUCTION SYSTEMS AVAILABLE AS FOLLOWS:	
MATERIAL	CLEARANCE REDUCTION SYSTEM
NON-COMBUSTIBLE	NONE REQUIRED
LIMITED-COMBUSTIBLE	3" UNINSULATED STANDOFF
COMBUSTIBLE	1" INSULATED STANDOFF

Order Plans @ www.LDilLine.com

POPEYES
1835 N. WILSON ROAD
MARIETTA, GA 30067

THESE DRAWINGS ARE THE PROPERTY OF ARCHITRAVE GROUP PC AND SHALL NOT BE USED OR REPRODUCED WITHOUT THE EXPRESS WRITTEN PERMISSION FROM THE OWNER.

Architrave GROUP PC
127 Broad Street
Charlotte, NC 28204
Phone (704) 212-0007 Fax (704) 212-0009
JOSE C. SANTOS, P.E. - N.J. A18745
PA 14405209 VA 018522 NC 055008
MD 10897 NCT 52685

POPEYES
1702 RALEIGH ROAD PKY NW
WILSON, NORTH CAROLINA

LOUISIANA KITCHEN PLK DESIGN STANDARDS
88 SEATS / DUAL-LINE PRODUCTION PLK1711-DL

LOUISIANA KITCHEN

POPEYES

PROFESSIONAL SEAL
17231
ENGINEER
GEORGE W. AUSTIN JR.
05/18/20

SHULTZ ENGINEERING GROUP
212 N. McDowell St, Suite 204
Charlotte, NC 28204
(P) 704.334.7363 (F) 704.347.0093
www.shultzeg.com | SEG - 20-078
NC FIRM LICENSE NUMBER: C-0898

HOOD DETAILS
M5

DATE: 05/18/2020
PROJECT NO: G20-05
CHECKED: JKS