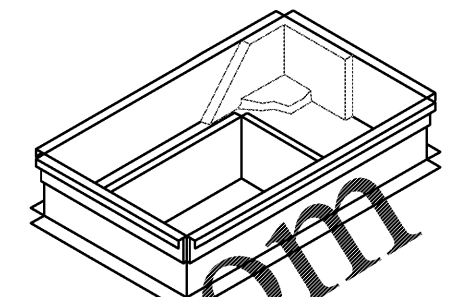
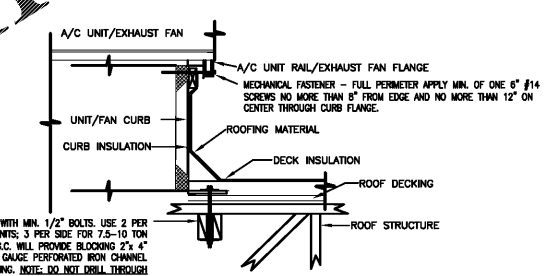


NOTE: FACTORY CURB CONVERSION SHALL NOT BE ACCEPTED. FOR ORDERING INFORMATION REFER TO THE NCA HVAC EQUIPMENT PACKAGE NOTE, SHEET M-1.

ELECTRICAL CONTRACTOR AND PLUMBING CONTRACTOR WILL PROVIDE PITCH POCKETS FOR HVAC EQUIPMENT CONNECTIONS. DO NOT PENETRATE BOTTOM OF FAN OR RTU CURB.

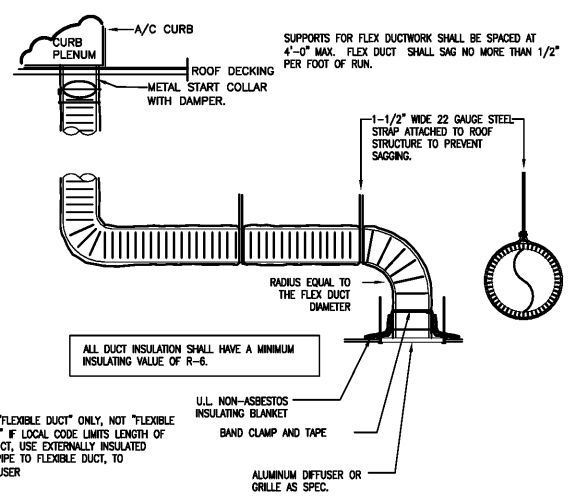


FACTORY CURB CONVERSION SHALL NOT BE ACCEPTED.
NCA PLENUMIZED AC CURB DETAIL
 NOT TO SCALE



SECURE A/C CURB TO STRUCT WITH MIN. 1/2" BOLTS. USE 2 PER SIDE FOR FANS AND 3-6 TON UNITS; 3 PER SIDE FOR 7.5-10 TON UNITS. EQUALLY SPACED. THE G.C. WILL PROVIDE BLOCKING 2" x 4" WOOD, WELDED ANGLE, OR 12 GAUGE PERFORATED IRON CHANNEL (UNSTRUCT) EACH SIDE FOR FRAMING. NOTE: DO NOT DRILL THROUGH ROOF FRAMING MEMBER.

ACCEPTABLE FOR 140 MPH ZONE
ROOF EQUIP. CURB MOUNTING DETAIL
 NOT TO SCALE



NOTE: USE "FLEXIBLE DUCT" ONLY, NOT "FLEXIBLE CONNECTOR." IF LOCAL CODE LIMITS LENGTH OF FLEXIBLE DUCT, USE EXTERNALLY INSULATED SNAPLOCK PIPE TO FLEXIBLE DUCT, TO GRILLE/DIFFUSER.

DUCT SCHEDULE	
SIZE	GAUGE
6" - 8"	28
10" - 12"	26
14" - 16"	24
18" - 20"	22

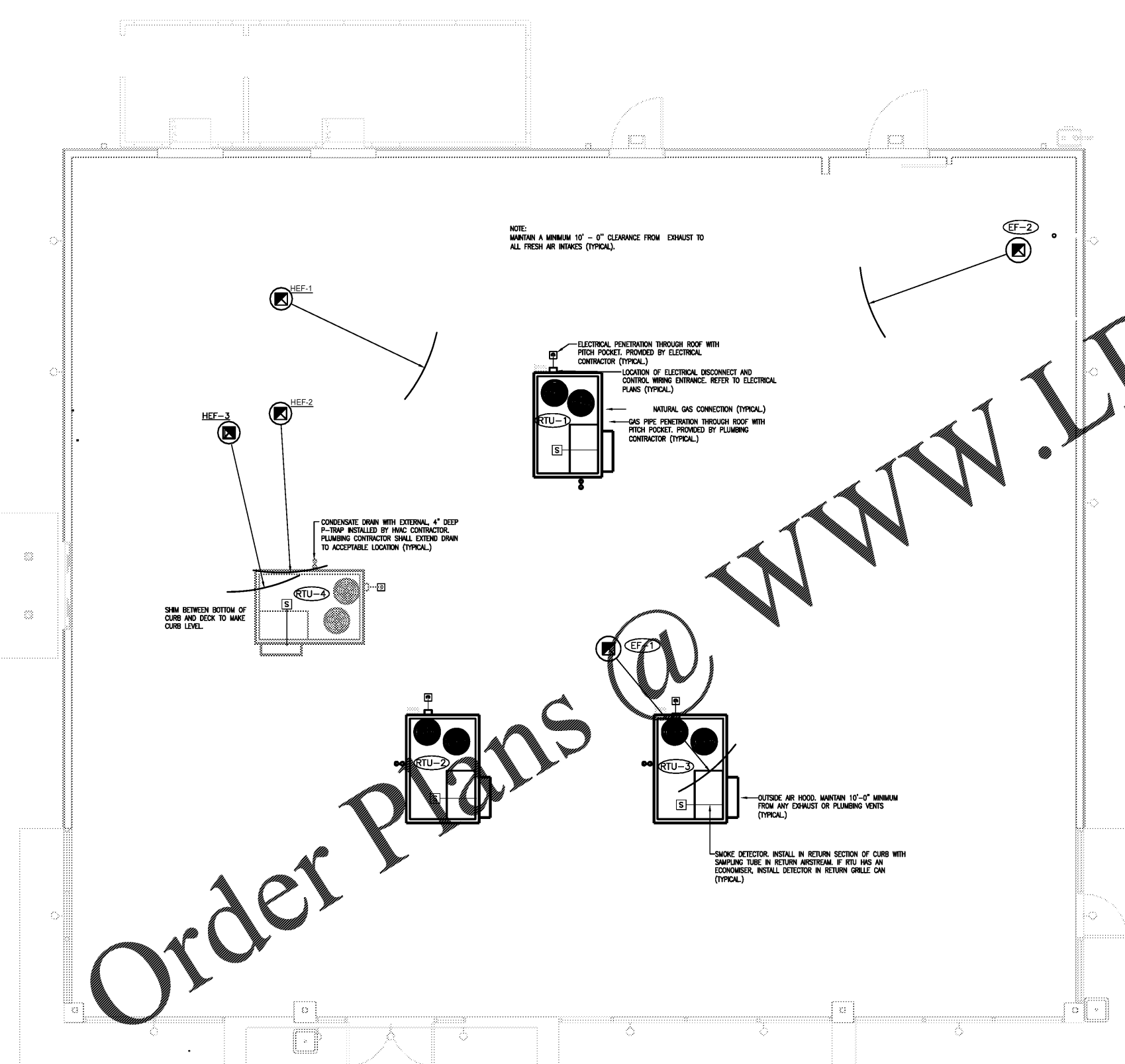
DUCT SUPPORT: SUPPORT DUCTWORK WITH 1-1/2" WIDE 22 GAUGE STEEL STRAPS FIRMLY ATTACHED TO THE BUILDING STRUCTURE. SPACING SHALL BE MAXIMUM 10'-0" FOR RIGID DUCTWORK, AND MINIMUM 4'-0" FOR FLEXIBLE DUCTWORK. 12 GAUGE WIRE MAY BE SUBSTITUTED FOR STRAPS IF 1-1/2" WIDE 22 GAUGE STEEL SADDLES ARE USED TO FULLY ENCLOSE DUCT. REFER TO THE HVAC DUCT CONSTRUCTION STANDARDS PUBLISHED BY SMACNA FOR ADDITIONAL DETAILS. FULLY COMPLY WITH MECHANICAL CODES.

RIGID/FLEXDUCT CONNECTION/INSTALL DETAIL
 NOT TO SCALE

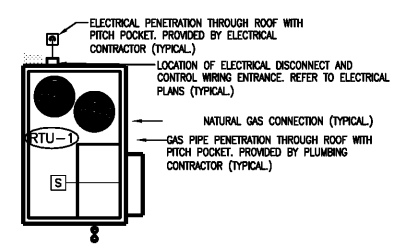
NOTE: DO NOT INSTALL SMOKE DETECTOR ON OUTSIDE OF CURB OR RTU.



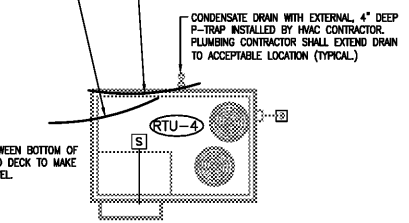
SHULTZ ENGINEERING GROUP
 212 N. McDowell St, Suite 204
 Charlotte, NC 28204
 (P) 704.334.7363 (F) 704.347.0093
 www.shultzeg.com | SEG - 20-078
 NC FIRM LICENSE NUMBER: C-0898



NOTE: MAINTAIN A MINIMUM 10' - 0" CLEARANCE FROM EXHAUST TO ALL FRESH AIR INTAKES (TYPICAL).



ELECTRICAL PENETRATION THROUGH ROOF WITH PITCH POCKET, PROVIDED BY ELECTRICAL CONTRACTOR (TYPICAL).
 LOCATION OF ELECTRICAL DISCONNECT AND CONTROL WIRING ENTRANCE. REFER TO ELECTRICAL PLANS (TYPICAL).
 NATURAL GAS CONNECTION (TYPICAL).
 GAS PIPE PENETRATION THROUGH ROOF WITH PITCH POCKET, PROVIDED BY PLUMBING CONTRACTOR (TYPICAL).



CONDENSATE DRAIN WITH EXTERNAL 4" DEEP P-TRAP INSTALLED BY HVAC CONTRACTOR. PLUMBING CONTRACTOR SHALL EXTEND DRAIN TO ACCEPTABLE LOCATION (TYPICAL).

SHIM BETWEEN BOTTOM OF CURB AND DECK TO MAKE CURB LEVEL.

OUTSIDE AIR HOOD. MAINTAIN 10'-0" MINIMUM FROM ANY EXHAUST OR PLUMBING VENTS (TYPICAL).

SMOKE DETECTOR. INSTALL IN RETURN SECTION OF CURB WITH SAMPLING TUBE IN RETURN AIRSTREAM. IF RTU HAS AN ECONOMISER, INSTALL DETECTOR IN RETURN GRILLE CAN (TYPICAL).

ROOF PLAN - HVAC
 SCALE 1/4" = 1' - 0" WHEN PLOTTED 36" X 24"

Order Plans @ www.LDILine.com