

SEE DOOR SCHEDULE NARROW FRAME  
 TYPE A STOREFRONT PREFINISHED ORANGE  
 TYPE B METAL DOOR 1 3/4" FLUSH DOOR  
 TYPE C SOLID CORE 1-3/4" WOOD DOOR, BIRCH  
 TYPE D SOLID CORE 1-3/4" WOOD DOOR, BIRCH  
 TYPE E SOLID CORE 1-3/4" WOOD DOOR, BIRCH

**1 DOOR ELEVATIONS**  
 A17 3"=1'-0"

MARK	SIZE	DOOR	FRAME	QUANTITY												
				BUTTS	STOP	THRESH	CLOSER	LOCKSET	WEATHER-STRIPPING	LOUVERS	PANIC	KICK PLATE	VIEWER	PUSH/PULL	HDWR. SET	
1	3'-0" X 7'-0" (PAIR)	TYPE A	SF-1	3 PR	1	1	1	1	1	1	-	1	-	-	-	2
2	3'-0" X 7'-0"	TYPE A	SF-1	1.5 PR	1	1	1	1	1	1	-	1	-	-	-	2
3	3'-0" X 6'-8"	TYPE C	HM-1	1.5 PR	-	-	1	1	1	-	-	-	1	1	-	4
4	3'-6" X 7'-0"	TYPE B	HM-1	1.5 PR	1	1	1	1	1	1	-	1	2	1	-	1
5	3'-0" X 6'-8"	TYPE D	HM-1	1.5 PR	1	-	1	1	1	-	-	-	2	-	1	3
6	3'-0" X 5'-0"	TYPE E	HM-1	1.5 PR	1	-	1	1	1	-	-	-	-	-	-	5
7	2'-0" X 5'-0"	TYPE E	HM-1	1.5 PR	1	-	1	1	1	-	-	-	-	-	-	5
8	3'-0" X 6'-8"	TYPE E	HM-1	1.5 PR	1	-	1	1	1	-	-	-	2	-	1	3
9	3'-0" X 5'-0"	TYPE E	HM-1	1.5 PR	1	-	1	1	1	-	-	-	-	-	-	5
10	3'-0" X 6'-8"	TYPE D	HM-1	1.5 PR	1	-	1	1	1	-	-	-	2	-	-	4
11	3'-0" X 6'-8"	TYPE C	HM-1	1.5 PR	-	-	1	1	1	-	-	-	1	1	-	4
12	DOORS BY COOLER MANUFACTURER - SEE SHEET A-14															
13	DOORS BY COOLER MANUFACTURER - SEE SHEET A-14															

**2 DOOR SCHEDULE**  
 A17 3"=1'-0"

**HARDWARE SET NO. 1:** (LOCKNET SERIES DOOR PACKAGE)  
 DOOR FRAME & HARDWARE INCLUDING ONE-WAY VISION PANEL W/ FLAP, CONTINUOUS HINGE, HEAVY DUTY CLOSER AND PANIC HARDWARE ORDERED THROUGH LOCKNET (800) 887-4307  
 1 EA. 3'-0" X 7'-0" X 1/8" X 16 GA. X G90 GALVANIZED LOCKNET SECURITY DOOR  
 1 EA. 3'-0" X 7'-0" X (5/8" OR 3/4") JAMB DEPTH X 14 GA. X G90 GALVANIZED X WELDED IN PLACE EOA X 1/4" X 2-1/2" HR PLATE SPREADER BAR X 4-SIDED WELDED DOOR FRAME X FACTORY FINISH PAINTED  
 8 EA. 3/4" COVER PLUGS (BLACK)  
 1 EA. AIR LOUVER VLF-JG-PVC-1/2" LEXAN - 9" X 9" GALVANIZED SECURITY VISION  
 1 EA. PEMKO CDHFM2SLF-HD FULL MORTISE CONT. GEARED ALUM. HINGE X 628  
 1 EA. SECURITY LATCH GUARD X FULL LENGTH X TORX SD/ST SMS X FACTORY FINISH  
 1 EA. ANKOR 1250S X EO X AL EXIT DEVICE  
 1 EA. DORMA 8616 X DS X FCOV S SNI X AL CLOSER  
 1 EA. ROCKWOOD 24" X 40" X .050 X US22D X SECURITY TORX SD/ST SMS ARMOR PLATE ON PUSH SIDE  
 1 EA. PEMKO 171A X 42" X DOUBLE NOTCH CUT ENDS X THRESHOLD  
 1 EA. PEMKO 346C X 46" AL OVERHEAD RAIN DRIP X SECURITY TORX SD/ST SMS  
 1 EA. PEMKO 221APK X 42" AL COMBINATION KICK PLAT & DOOR SHOE X TORX  
 1 SET. PMS12 X CONT. PERIMETER WEATHER SEAL (BLACK)  
 1 EA. INSTALLATION KIT (PER LOCKNET)  
 1 EA. CARDBOARD PACKAGING (2 PIECE BOX)  
 1 EA. DELIVERED ON FULL LENGTH WOODEN PALLET

**HARDWARE SET NO. 2:** (BY YKK AP AMERICA INC.)  
**DOORS AND FRAMES**  
 QTY PART # FINISH MODEL DESCRIPTION  
 1 4911DOR YBSN YKK AP #200 3' x 7' O.P. OFFSET PIVOTS, HBR RH  
 1 92115FR YBSN 2' x 4-1/2" 3' x 7' O.P. FRAME, W/TRANSOM, RH  
 1 491140OP YBSN 200 6' x 7' O.P. OFFSET PIVOTS, HBR PR  
 1 92118TP YBSN 2' x 4-1/2" 6' x 7' O.P. FRAME, W/TRANSOM, PR  
 3 P61205 335 SM CLOSER W/BACK CHECK N/O PRES  
 3 H1104SD 335 PUSH/PULL 1" DIAM. TYPE SC (9" CTC)  
 3 H1107 YBSN 3.0 BOTTOM RAIL WEATHERSTRIP  
 3 SD101 YBSN 10" BOTTOM RAIL UP TO 3"  
 1 V50 DETEX PANIC HARDWARE W/ DOGGING FEATURE

**STOCK LENGTHS**  
 QTY PART # FINISH LENGTH DESCRIPTION  
 11 BE91503 YBSN 24.0 HEAD / JAMB / VERTICAL  
 3 BE91512 YBSN 24.0 SHALLOW POCKET FILLER  
 2 BE91508 YBSN 24.0 HORIZONTAL  
 2 BE91513 YBSN 24.0 4-1/2" SIDELITE BASE  
 4 E91015 YBSN 24.0 GLASS STOP  
 2 BE91510 YBSN 24.0 SILL FLASHING

**ACCESSORIES**  
 QTY PART # LENGTH PKG DESCRIPTION  
 1 E20020 500/PB SETTING BLOCK  
 1 E20047 500/PB WATER DEFLECTOR  
 1 E20164 500/PB "W" SIDE BLOCK FOR DEEP POCKET  
 1 E10168 200/PB END DAM  
 2 E20062 500/PB GLAZING GASKET  
 2 PC1220 100/PB #12 X 1-1/4" PHSMS TYPE AB  
 1 E11015 500/PB SHEAR BLOCK  
 1 PC1028 100/PB #10 X 1-3/4" PHSMS TYPE AB

**HARDWARE SET NO. 3:**  
 1-1/2 PR. HINGES MCKINNEY BEARING HINGES, 4-1/2" X 4-1/2" US26D  
 1 EA. LATCHSET W/LOCK SCHLAGE SATURN X US26D  
 1 EA. FLOOR STOP BALDWIN #4000 FLOOR MOUNT  
 1 EA. KICKPLATE BURNS 8" X 30" X 8" 16GA. US628  
 1 EA. COAT HOOK JACKNOC #460 WITH RUBBER BUMPER  
 1 EA. CLOSER LCN 1490 ALUMINUM CLOSER

FOLLOWING ITEMS PROVIDED & INSTALLED BY G.C.:  
 1 EA. SIGN HANDICAP ACCESSIBILITY (ADA)  
 1 EA. SIGN AS RECD. DOOR #5 "MEN" 7" X 2" DOOR #6 "WOMEN" 7" X 2"

**HARDWARE SET NO. 4:**  
 1-1/2 PR. HINGES MCKINNEY BEARING HINGES, 4-1/2" X 4-1/2" US26D  
 1 EA. KICKPLATE BURNS 8" X 30" X 8" 16GA. US26D  
 1 EA. LATCHSET W/LOCK SCHLAGE SATURN X US26D  
 1 EA. 6" W/ HEAVY WINDOW BALDWIN #4000 FLOOR MOUNT  
 1 EA. CLOSER LCN 1490 ALUMINUM CLOSER

**HARDWARE SET NO. 5:**  
 1-1/2 PR. HINGES MCKINNEY BEARING HINGES, 4-1/2" X 4-1/2" US26D  
 1 EA. LATCHSET W/LOCK SCHLAGE SATURN X US26D  
 1 EA. CLOSER LCN 1490 ALUMINUM CLOSER

**NOTES:**  
 1. DOOR AND FRAME SHALL BE FULLY ASSEMBLED AND ALL HARDWARE SHALL BE INSTALLED BY SKILLED CRAFTSMEN AT THE FACTORY AND THE UNIT DELIVERED TO THE JOBSITE READY FOR INSTALLATION. THE DOOR, HARDWARE AND THE HARDWARE INSTALLATION SHALL CARRY A MANUFACTURER'S 16 MONTH WARRANTY WITH 24 HOUR SERVICE. (TOLL FREE NUMBER TO BE DISPLAYED ON DOOR). DOORS TO BE FACTORY FINISHED IN DARK BRONZE.  
 2. H101 FLUSH BOLT ON INACTIVE LEAF OF PAIR ONLY.

**SPECIFICATIONS:**  
 DIVISION 8: DOORS, WINDOWS AND GLASS

SECTION 8B: INTERIOR WOOD CORE DOORS AND FRAMES  
 GENERAL PROVISIONS

1. SCOPE: FURNISH AND INSTALL ALL INTERIOR WOOD CORE DOORS AND RELATED ALUMINUM FRAMES. REFER TO NATIONAL ACCOUNT DIRECTORY.

**MATERIALS**  
 1. DOORS ARE WOOD CORE SOLID DOORS. SEE DOOR SCHEDULE FOR SIZE, MATERIAL, HARDWARE, AND FINISH. FRAMES SHALL BE HOLLOW METAL AND FINISHED PER FINISH SCHEDULE.  
 2. SEE HARDWARE SCHEDULE FOR HARDWARE AND MANUFACTURERS.

3. SEE SECTION 10A FOR TOILET STALL DOORS WHERE APPLICABLE.

**PERFORMANCE**  
 1. INSTALLATION: INSTALL IN ACCORDANCE WITH MANUFACTURER'S INSTRUCTIONS. CAULK AROUND ABUTTING EDGES WITH CLEAR SILICONE.

SECTION 8C: STEEL DOORS AND FRAMES

GENERAL PROVISIONS  
 1. SCOPE: THE GENERAL CONDITIONS, SUPPLEMENTARY CONDITIONS, AND APPLICABLE PORTIONS OF DIVISION 1 OF THE SPECIFICATIONS ARE PART OF THIS SECTION.

FURNISH AND INSTALL ALL STEEL DOORS AND FRAMES, COMPLETE WITH JAMB ANCHORS.

**MATERIALS**  
 1. DOORS AND FRAMES BY DOOR AND WINDOW INDUSTRIES, INC. STEELCRAFT, OR CECO.  
 DOOR FRAMES SHALL BE 16 GAUGE COLD ROLLED STEEL. THEY SHALL BE MITERED AND WELDED AT CORNERS. FRAMES SHALL BE FURNISHED FACTORY PRIMED AND SHALL HAVE THREE (3) "T" TYPE JAMB ANCHORS FOR EACH SIDE OF EACH FRAME. CAULK AROUND ALL ABUTTING EDGES WITH CLEAR SILICONE.

DOORS SHALL BE CONSTRUCTED OF TWO (2) SHEETS OF 18 GAUGE COLD ROLLED STEEL, WITH VERTICAL STIFFENERS NOT VERTICALLY APART AT TOP AND BOTTOM EDGES REINFORCED HORIZONTALLY BY STEEL CHANNELS. JOINTS AT EDGES OF DOOR SHALL BE CONTINUOUSLY WELDED. DOORS SHALL BE SOUND DEADENED BY FILLING CORE WITH MINERAL WOOL INSULATION. THEY SHALL BE THOROUGHLY CLEANED OF GREASE AND OTHER IMPURITIES, FILLED FLUSH, AND GIVEN TWO (2) COATS OF BAKED-ON RUST RESISTANT METALLIC PRIMER.

2. SEE HARDWARE SCHEDULE FOR HARDWARE AND MANUFACTURERS.

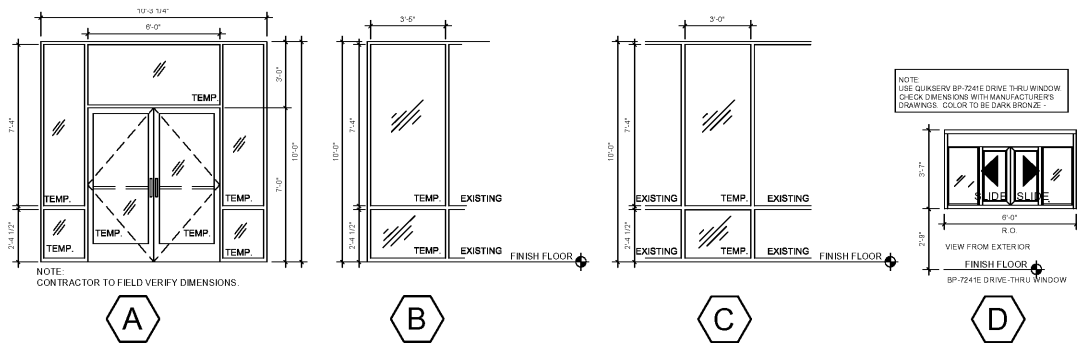
**DOOR & HARDWARE NOTES**

- A. HARDWARE SUPPLIER TO VERIFY STATE/LOCAL HANDICAPPED REQUIREMENTS FOR EXIT HARDWARE.
- B. COMPLETE SUBMITTALS ARE REQUIRED FOR APPROVAL PRIOR TO ANY ORDERING OR WORK.
- C. ALL DOOR HARDWARE MUST HAVE A SHAPE THAT IS EASY TO GRASP WITH ONE HAND AND DOES NOT REQUIRE TIGHT GRASPING, TIGHT PINCHING, OR TWISTING OF THE WRIST TO OPERATE.
- D. IF PANIC HARDWARE IS REQUIRED BY CODE, G.C. TO FURNISH AND INCLUDE PRICE ON BID.
- E. SEAL BOTTOM OF WOOD DOORS.

**STOREFRONT NOTES:**

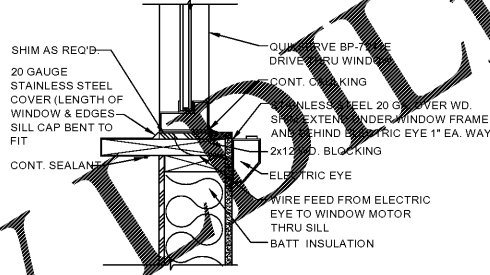
ALUMINUM STOREFRONT FRAME BY YKK AP OF AMERICA (OR EQUAL) SYSTEM=YES 45 TU, 2'x 4 1/2" THERMAL SYSTEM FOR 1" INSULATED LOW "E" GLAZING.

DOORS: YKKAP 20D



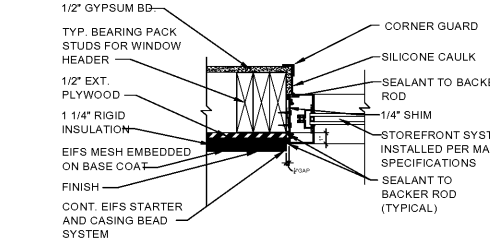
NOTE: CONTRACTOR TO FIELD VERIFY DIMENSIONS

**3 WINDOW ELEVATIONS**  
 A17 1/4"=1'-0"

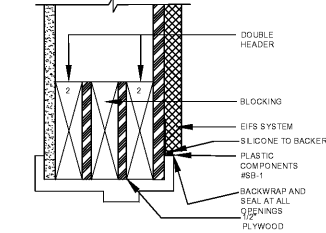


**DRIVE THRU WINDOW SILL DETAIL**  
 A17 3"=1'-0"

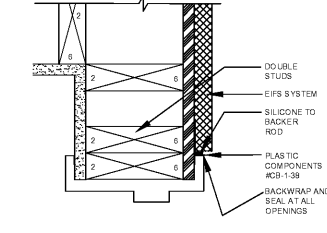
**9 SECTION @ EXT. HEADER**  
 A17 3"=1'-0"



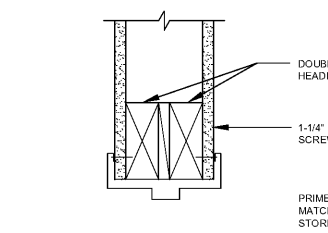
**8 JAMB DETAIL @ EIFS**  
 A17 3"=1'-0"



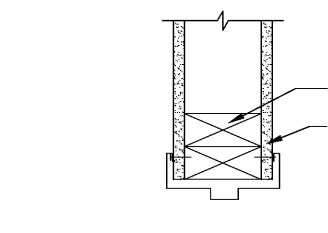
**11 SECTION @ EXT. HEADER**  
 A17 3"=1'-0"



**12 JAMB @ EXT. HEADER**  
 A17 3"=1'-0"



**11 SECTION @ INT. HEADER**  
 A17 3"=1'-0"



**14 JAMB @ INT. HEADER**  
 A17 3"=1'-0"

Order Plans @ WWW.WallLine.com

**POPEYES**  
 505 BLUE LAGOON DRIVE  
 WAMI, FLORIDA 32188

THESE DRAWINGS ARE THE PROPERTY OF ARCHITRAVE GROUP PC AND SHALL NOT BE USED OR REPRODUCED WITHOUT THE EXPRESS WRITTEN PERMISSION FROM THE OWNER.

**Architrave Group PC**  
 1575 Park Avenue • Suite 107  
 Red Bank, New Jersey 07070  
 Phone (732) 212-0007 Fax (732) 212-0099  
 10000 Old Country Road, Suite 100, L.A., NY 11756  
 10000 Old Country Road, Suite 100, L.A., NY 11756  
 10000 Old Country Road, Suite 100, L.A., NY 11756

DE 95-000774 SC 8570  
 NC 12280 SCF 100815  
 05365

**Architrave Group PC**  
 1575 Park Avenue • Suite 107  
 Red Bank, New Jersey 07070  
 Phone (732) 212-0007 Fax (732) 212-0099  
 10000 Old Country Road, Suite 100, L.A., NY 11756  
 10000 Old Country Road, Suite 100, L.A., NY 11756  
 10000 Old Country Road, Suite 100, L.A., NY 11756

**POPEYES**  
 1702 RALEIGH ROAD PKY NW  
 WILSON, NORTH CAROLINA  
 LOUISIANA KITCHEN PLK DESIGN STANDARDS  
 83 SEATS / DUAL-LINE PRODUCTION/ PLK1771-DL

**LOUISIANA KITCHEN**

**REVISIONS:**

**A17**  
 DOOR & WINDOW SCHEDULES, ELEVATIONS, & DETAILS

DATE: 5/18/20  
 PROJECT NO: G20-05  
 CHECKED: JS