

SPECIFICATIONS:

DIVISION 7: THERMAL AND MOISTURE PROTECTION

SECTION 7C: SHEET METAL WORK
 GENERAL PROVISION
 1. SCOPE: FURNISH AND INSTALL GRAVEL STOPS, FLASHING, PARAPET CAP, DOWNSPOUTS, AND GUTTERS

A. ROOFING MEMBRANE FLASHING IS INCLUDED IN SECTION 7B: MEMBRANE ROOFING.

MATERIALS
 1. MATERIALS SHEET METAL: .032 ALUMINUM
 2. NAIL FASTENERS: 1 3/4" X 11 GAUGE GALVANIZED, STAINLESS STEEL, OR ALUMINUM ROOFING NAILS MAY BE USED FOR FASTENERS INTO WOOD WHEN CONCEALED ONLY.
 3. WASHERS: NEOPRENE
 4. SCREW FASTENERS: CORROSION-RESISTANT, SELF-TAPPING, HEX HEAD SCREW, 1/4" MINIMUM DIAMETER WITH SUFFICIENT LENGTH TO PENETRATE 1" MINIMUM INTO WOOD OR 1/2" MINIMUM INTO STEEL. PROVIDE NEOPRENE SEALING WASHER FOR EXPOSED FASTENING.

PERFORMANCE
 1. INSTALLATION: EXPOSED FLASHINGS SHALL BE PAINTED TO MATCH ADJACENT MATERIALS. VERIFY WITH POPEYES' CONSTRUCTION MANAGER.

SECTION 7D: STANDING SEAM CANOPY

1.0 SUBMITTALS
 A. SUBMIT FOR APPROVAL SAMPLES, SHOP DRAWINGS, PRODUCT DATA.

QUALITY ASSURANCE
 A. COMPLY WITH GOVERNING CODES AND REGULATIONS. PROVIDE PRODUCTS OF ACCEPTABLE MANUFACTURERS WHICH HAVE BEEN IN SATISFACTORY USE IN SIMILAR SERVICE FOR THREE YEARS. USE EXPERIENCED INSTALLERS. DELIVER, HANDLE, STORE MATERIALS IN ACCORDANCE WITH MANUFACTURER'S INSTRUCTIONS.

WARRANTY
 METAL ROOF SYSTEM MANUFACTURER, UPON FINAL ACCEPTANCE FOR PROJECT, FURNISH A WARRANTY COVERING BARE METAL AGAINST RUPTURE, STRUCTURAL FAILURE AND PERFORATION DUE TO NORMAL ATMOSPHERIC CORROSION EXPOSURE FOR A PERIOD OF 20 YEARS.

PART 2 - PRODUCTS (UC-4 SERIES, AS MANUFACTURED AND SPECIFIED BY UNA-CLAD, METAL ROOF SYSTEMS)

2.0 MATERIALS
 A. METAL ROOF SYSTEM PROFILE:
 1. UC-4 "NO CLIP", 1 1/2" 12" RIB TO RIB. (SMALL BATTEN TYPE)
 2. CONCEALED FASTENER
 B. GAUGE:
 1. .026 GAUGE - STEEL
 C. TEXTURE:
 1. SMOOTH
 D. FINISH:
 1. PREMIUM FLUOROCARBON COATING PRODUCED WITH KYNAR 500 OR HYLAR 5000 RESIN (20 YEAR WARRANTY.)
 E. MANUFACTURER:
 1. UNA-CLAD OR EQUAL

PART 3 - EXECUTION

3.0 INSTALLATION
 A. COMPLY WITH SMACNA SHEET METAL MANUAL RECOMMENDATIONS. COMPLY WITH ACCESSORY MANUFACTURER'S INSTRUCTIONS AND RECOMMENDATIONS. COORDINATE INSTALLATION WITH INSULATION SYSTEM TO ENSURE WEATHERTIGHT PERFORMANCE.
 B. ANCHOR SECURELY TO STRUCTURE TO WITHSTAND INWARD AND OUTWARD LOADS.
 C. ISOLATE DISSIMILAR METALS TO PREVENT GALVANIC CORROSION.

DIVISION 9: FINISHES

SECTION 9B: EIFS

PART 1 GENERAL

1.01 DESCRIPTION
 A. DESIGN REQUIREMENTS: THE STRUCTURAL WALL SYSTEM TO WHICH THE EIFS IS ATTACHED SHALL MEET L240 MAXIMUM ALLOWABLE DEFLECTION CRITERIA AND APPLICABLE BUILDING CODE REQUIREMENTS.

1.02 SUBMITTALS
 A. SUBMIT SAMPLES FOR APPROVAL AS DIRECTED BY OWNER

1.03 DELIVERY, STORAGE AND HANDLING
 A. ALL EIFS MATERIALS SHALL BE DELIVERED IN THEIR ORIGINAL SEALED CONTAINERS BEARING MANUFACTURER'S NAME AND IDENTIFICATION OF PRODUCT WITH WRITTEN APPLICATION INSTRUCTIONS AND APPROPRIATE HEALTH, HAZARD, AND SAFETY DATA.
 B. ALL EIFS READY-MIXED MATERIALS SHALL BE PROTECTED FROM EXTREME HEAT, SUN AND FROST. FACTORY PROPORTIONED BAGGED MATERIALS SHALL BE STORED OFF THE GROUND AND PROTECTED FROM MOISTURE.

1.04 JOB CONDITIONS
 A. ALL EIFS MATERIALS SHALL NEVER BE APPLIED IF AMBIENT AND SURFACE TEMPERATURES CANNOT BE KEPT ABOVE 40° F DURING APPLICATION AND DRYING PERIOD. FOR INSTALLATION IN TEMPERATURES LESS THAN 40° F SUPPLEMENTARY HEAT SHALL BE PROVIDED. THE INSTALLED EIFS MATERIALS SHALL BE PROTECTED FROM EXPOSURE TO RAIN AND FREEZING UNTIL DRY.
 1.11 WARRANTY
 A. PROVIDE MANUFACTURER'S STANDARD LABOR AND MATERIAL WARRANTY.

PART 2 PRODUCTS

2.01 MANUFACTURERS

A. DRYVIT SYSTEMS, INC.

2.02 ADHESIVES

A. DISPERSION ADHESIVE - NONCEMENTITIOUS, ACRYLIC BASED ADHESIVE.

2.03 INSULATION BOARD

A. NOMINAL 1.0 lb/cubic feet (16 kg/cubic meter) EXPANDED POLYSTYRENE (EPS) INSULATION BOARD IN COMPLIANCE WITH ASTM C 578 TYPE I REQUIREMENTS, AND EIMA GUIDELINE SPECIFICATION FOR EXPANDED POLYSTYRENE (EPS) INSULATION BOARD.

2.04 BASECOAT

A. ONE-COMPONENT POLYMER MODIFIED CEMENTITIOUS BASE COAT WITH FIBER REINFORCEMENT AND LESS THAN 33% PORTLAND CEMENT CONTENT BY WEIGHT.

2.05 REINFORCING MESHES

A. STANDARD MESH
 1. MESH - NOMINAL 4.5 oz/sq. yd. (163 g/sq. meter), SYMMETRICAL, INTERLACED OPEN-WEAVE GLASS FIBER FABRIC MADE WITH MINIMUM 25 PERCENT BY WEIGHT ALKALINE RESISTANT COATING FOR COMPATIBILITY WITH DRYVIT MATERIALS.
 B. HIGH IMPACT MESH
 1. INTERMEDIATE MESH (MESH C) - NOMINAL 11.0 oz/sq. yd. HIGH IMPACT, INTERWOVEN, OPEN WEAVE GLASS FIBER FABRIC WITH ALKALINE RESISTANT COATING FOR COMPATIBILITY WITH DRYVIT MATERIALS.

2.06 PRIMER

A. PRIMER
 ACRYLIC BASED PRIMER (FOR ACRYLIC BASED FINISHES)

2.07 FINISH COAT
 A. ACRYLIC BASED TEXTURED WALL COATINGS. SEE E.I.F.S. FORMULAS FOR FINISH COLOR.

2.08 JOB MIXED INGREDIENTS
 A. PORTLAND CEMENT: ASTM C 150, TYPE I.
 B. WATER: CLEAN AND POTABLE.

PART 3 EXECUTION

A. UNDER NO CIRCUMSTANCES SHALL ANY OF THE PRODUCTS BE ALTERED BY ADDING ADDITIVES, EXCEPT FOR SMALL AMOUNTS OF CLEAN WATER AS DIRECTED ON LABEL. ANTIFREEZE, ACCELERATORS, RAPID BINDERS, ETC., ARE FORBIDDEN.

B. THE SURFACE TO RECEIVE THE EIFS SHALL BE STRUCTURALLY SOUND, CLEAN, DRY AND FREE OF WARPAGE, RESIDUAL MOISTURE OR DAMAGE FROM MOISTURE. SURFACES SHALL BE UNIFORM WITH NO IRREGULARITIES GREATER THAN 1/8" IN 4'-0". SURFACES SHALL BE DEEP INSPECTED FOR COMPLIANCE WITH THE FOLLOWING REQUIREMENTS PRIOR TO INSTALLATION OF THE EIFS:

1. PLYWOOD SHEATHING SHALL MEET A.P.A. (AMERICAN PLYWOOD ASSOCIATION) REQUIREMENTS FOR EXTERIOR OR EXPOSURE 1 CLASSIFICATION. APA DESIGN AND CONSTRUCTION GUIDELINES SHALL BE FOLLOWED FOR STORAGE, HANDLING AND INSTALLATION. MANUFACTURER'S PUBLISHED RECOMMENDATIONS SHALL BE FOLLOWED FOR STORAGE, HANDLING, STORAGE, HANDLING, INSTALLATION AND PROTECTION. ANY SHEATHING NOT IN COMPLIANCE SHALL BE REPLACED TO CONFORM WITH SPECIFICATION REQUIREMENTS PRIOR TO INSTALLATION OF THE EIFS.

2. CONCRETE, MASONRY OR PLASTER SURFACES SHALL BE PROPERLY CURED AND FREE OF DIRT, DUST, OIL, GREASE, MILDEW, FUNGUS, LATENCY, PAINT, EFFLORESCENCE AND ANY OTHER CONTAMINANT. ANY SURFACES NOT IN COMPLIANCE SHALL BE CORRECTED PER MANUFACTURER'S RECOMMENDATIONS PRIOR TO INSTALLATION OF THE EIFS.

C. AFTER SATISFACTORY INSPECTION OF SURFACES AND CORRECTION OF ANY DEVIATIONS FROM SPECIFICATION REQUIREMENTS, THE EIFS INSTALLATION MAY BEGIN PER MANUFACTURER'S INSTRUCTIONS.

D. THE STARTER STRIP OF MESH SHALL BE WIDE ENOUGH TO ADHERE 4" OF MESH ONTO THE WALL, BE ABLE TO WRAP AROUND THE BOARD EDGE AND COVER APPROXIMATELY 4" ON THE OUTSIDE SURFACE OF THE BOARD. THIS "BACKWAP" PROCEDURE SHALL BE FOLLOWED AT ALL EXPOSED BOARD EDGES IN ACCORDANCE WITH DETAILS (EXAMPLE-WINDOW AND DOOR HEADS AND JAMBS).

ALL AREAS WHERE THE EIFS MEETS DISSIMILAR MATERIAL OR TERMINATES (FOR EXAMPLE, WINDOW AND DOOR FRAMES) SHALL HAVE THE INSULATION BOARD CUT BACK FROM THE ADJOINING MATERIAL A MINIMUM OF 1/4" TO FORM AN ISOLATION JOINT.

E. APPLY THE ADHESIVE TO THE BACK OF THE INSULATION BOARD. STAGGER VERTICAL JOINTS AND INTERLOCK BOARDS AT ALL INSIDE AND OUTSIDE CORNERS. APPLY FIRM PRESSURE OVER ENTIRE SURFACE OF THE BOARDS TO INSURE UNIFORM CONTACT. BOARDS SHALL BRIDGE SHEATHING JOINTS BY A MINIMUM OF 2". ALL BOARD JOINTS SHALL BE BUTTED TIGHTLY TOGETHER TO ELIMINATE ANY THERMAL BREAKS IN THE EIFS. CARE MUST BE TAKEN TO PREVENT ANY ADHESIVE FROM GETTING BETWEEN THE JOINTS OF THE BOARDS. ALL OPEN JOINTS IN THE INSULATION BOARD LAYER SHALL BE FILLED WITH SLIVERS OF INSULATION OR AN APPROVED SPRAY FOAM.

F. NAILS, SCREWS, OR ANY OTHER TYPE OF NON-THERMAL MECHANICAL FASTENER SHALL NOT BE USED.

G. EXPANSION JOINTS ARE REQUIRED IN THE EIFS WHERE THEY EXIST IN THE SUBSTRATE, WHERE THE EIFS ADJOINS DISSIMILAR CONSTRUCTION, AND AT FLOOR LINES IN MULTILEVEL WOOD FRAME CONSTRUCTION. THE EIFS SHALL TERMINATE AT THE EXPANSION JOINT TO PROVIDE APPROPRIATE JOINT SIZE (SEE DETAILS) AND ALL BOARD EDGES SHALL BE COATED WITH APPROPRIATE GROUND COAT AND MESH IN ACCORDANCE WITH STANDARD "BACKWRAPPING" PROCEDURE. APPROPRIATE SEALANT/PRIMER AND BACKER SHALL BE INSTALLED AFTER GROUND COAT IS FULLY DRY TO PREVENT ANY WATER FLOW GETTING INTO OR BEHIND THE SYSTEM.

H. USE OF PLASTIC OR METAL CORNER BEADS, STOPBEADS, ETC., IS FORBIDDEN.

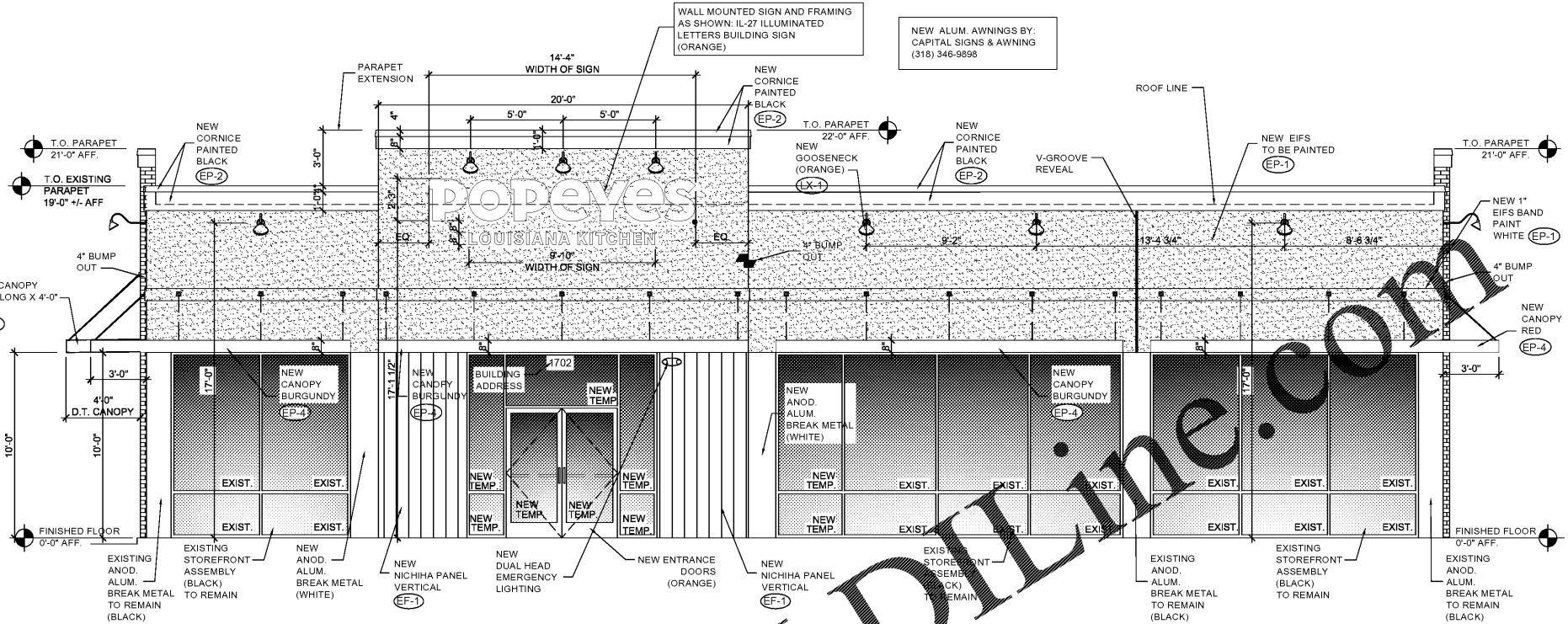
I. APPLY APPROPRIATE GROUND COAT OVER THE INSULATION BOARD WITH PROPER SPRAY EQUIPMENT OR A STAINLESS STEEL TROWEL TO A UNIFORM THICKNESS OF APPROXIMATELY 1/16" WORK HORIZONTALLY OR VERTICALLY IN STRIPS OF 40" AND IMMEDIATELY EMBED STANDARD REINFORCING MESH INTO THE WET GROUND COAT. THE MESH SHALL BE DOUBLE WRAPPED AT ALL CORNERS AND OVERLAPPED NOT LESS THAN 2-1/2" AT MESH JOINTS AVOID WRINKLES IN THE MESH. THE THICKNESS OF THE GROUND COAT SHALL BE SUCH THAT THE MESH IS FULLY EMBEDDED. ALLOW GROUND COAT TO THOROUGHLY DRY BEFORE APPLYING PRIMER OR FINISH.

J. DUPLICATE INSTALLATION PROCESS NOTED IN 3.01 M USING STANDARD MESH CREATING SECOND MESH LAYER AND ADDITIONAL IMPACT RESISTANCE. ALLOW TO DRY BEFORE APPLICATION OF EITHER STO PRIMER (OPTIONAL) OR STO FINISH.

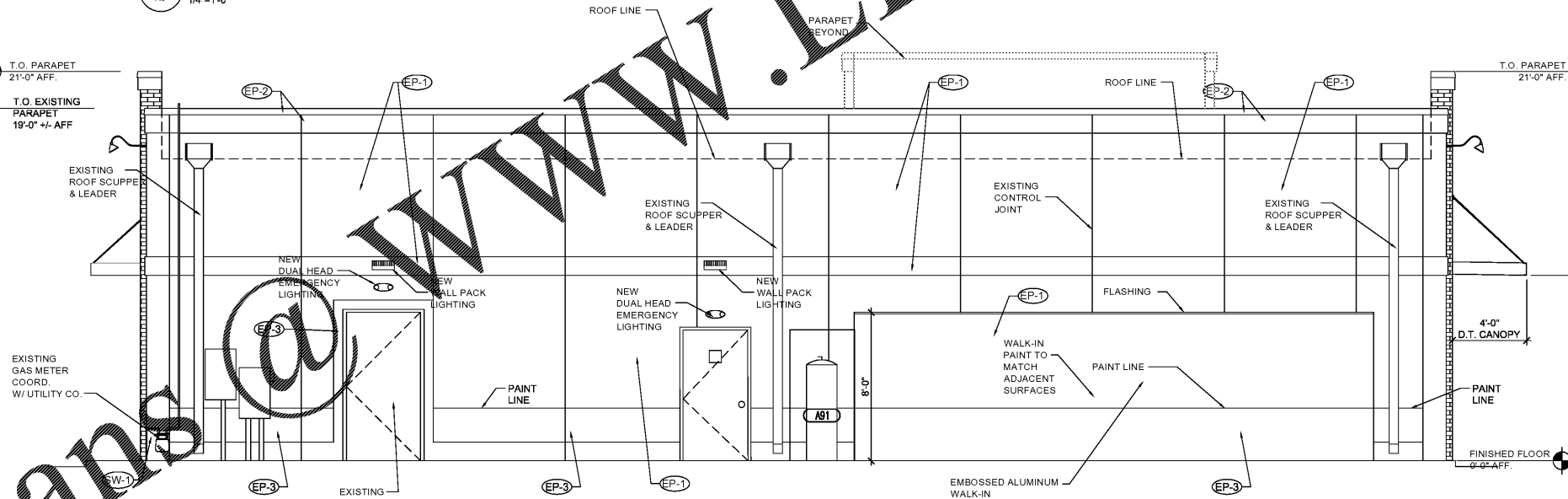
K. IF A PRIMER IS USED, APPLY WITH BRUSH, ROLLER OR PROPER SPRAY EQUIPMENT OVER CLEAN, DRY GROUND COAT AND ALLOW TO DRY THOROUGHLY BEFORE APPLYING FINISH. APPLY FINISH DIRECTLY OVER THE GROUND COAT (OR PRIMED GROUND COAT) ONLY AFTER THE GROUND COAT/PRIMER HAS THOROUGHLY DRIED. THE FINISH SHALL BE APPLIED BY SPRAYING, ROLLING, OR TROWELING WITH A STAINLESS STEEL TROWEL, DEPENDING ON FINISH SPECIFIED. GENERAL RULES FOR APPLICATION OF FINISHES ARE AS FOLLOWS:

1. USE A CLEAN, RUST-FREE, HIGH-SPEED MIXER TO THOROUGHLY STIR THE FINISH TO A UNIFORM CONSISTENCY (SMALL AMOUNTS OF CLEAN WATER MAY BE ADDED TO WORKABILITY).
 2. AVOID APPLICATION IN DIRECT SUNLIGHT.
 3. APPLY FINISH IN TWO APPLICATIONS ALWAYS WORKING TO A WET EDGE.
 4. WEATHER CONDITIONS AFFECT APPLICATION AND DRYING TIME. IN WET CONDITIONS, REDUCE WORKING TIME AND ALLOW EXTRA DRYING TIME. IN WINDY CONDITIONS, REDUCE SCHEDULING OF FINISH TO ACHIEVE DESIRED RESULTS. COOL OR DAMP CONDITIONS EXTEND WORKING TIME AND REDUCE DRYING TIME. FINISHES MAY REQUIRE ADDED MEASURES OF PROTECTION AGAINST WIND, DUST, DIRT, RAIN AND FREEZING.
 5. AESTHETIC "U"-GROOVES MAY BE DESIGNED INTO THE SYSTEM. (A MINIMUM OF 3/4" INSULATION BOARD MUST BE LEFT AFTER ANY GROOVES ARE CUT).
 6. "R" (RILLED TEXTURE) FINISHES MUST BE FLOATED WITH A PLASTIC TROWEL TO ACHIEVE THEIR RILLED TEXTURE.
 7. AVOID INSTALLING SEPARATE BATCHES OF FINISH SIDE-BY-SIDE.
 8. APPLY FINISH COLOR TO EIFS MIXES AND APPLY TO WALL COLOR TO MATCH EXTERIOR FINISH SCHEDULE COLORS.

L. EXTERIOR INSULATION AND FINISH TEXTURE SYSTEM: APPLY HIGH IMPACT SYSTEM ADJACENT TO DOORS FOR ADDITIONAL IMPACT RESISTANCE, USING INTERMEDIATE MESH. USE THE STANDARD SYSTEM SPECIFICATIONS AT ALL OTHER LOCATIONS.



1 FRONT ELEVATION
 1/4"=1'-0"



2 REAR ELEVATION
 1/4"=1'-0"

FINISH NOTES

THE FOLLOWING COMPONENTS CAN BE PURCHASED FROM THE APPROVED SIGN VENDORS:
 * STANDING SEAM ROOF
 * BALCONY RAILING
 * CLEARANCE BAR
 * GUARD RAIL
 * AWNINGS
 * SHUTTERS
 * DUMPSTER GATES
 * INTERIOR LADDER
 * ENCLOSURE GATE

THE FOLLOWING COMPONENTS TO BE MANUFACTURED AND INSTALLED BY THE GENERAL CONTRACTOR:
 * INTERIOR LADDER

E.I.F.S. WALL TEXTURE FINISH	
Manuf.	Texture
STO	STO ESSENCE SWIRL
DRYVIT	QUARTZ PUTZ

POPEYES LOUISIANA KITCHEN
 NEW CONSTRUCTION AND REIMAGING

EXTERIOR FINISH SCHEDULE
 UPDATE: 3/11/2019

Mark	MATERIAL	Location	Supplier / Manuf.	Material	Specification	Color	Finish / Notes
B-1	EXTERIOR PAINT	EXTERIOR TOWERS	DESIGN AND DIRECT SOURCE	THIN SET BRICK	ARCHITECTURAL URBAN SERIES	FLAGSTAFF (RED)	@ DT & RIGHT SIDE BLASF OUT
EP-1	EXTERIOR PAINT	WALL SURFACE, SURFACE ABOVE WAINSCOT ACCENT TRIM	BENJAMIN MOORE	PAINT	#OC-125	WHITE MOONLIGHT WHITE	
EP-2	EXTERIOR PAINT	PARAPET TRIM	BENJAMIN MOORE	PAINT	#3120-23	BLACK BLACK IRON	
EP-3	EXTERIOR PAINT	WAINSCOT ACCENT TRIM AND BELOW	BENJAMIN MOORE	PAINT	#HC-170	GRAY STONINGTON GRAY	
EP-4	EXTERIOR PAINT	SOFFIT WOOD PLYWOOD POLE AND DIRECTIONAL SIGN POLES	BENJAMIN MOORE	PAINT	#0096-10	RED: EXOTIC RED	
EP-5	METAL PAINT	DRIVE THRU CANOPY		PRIMER/PAINT	PRIMER: PRO INDUSTRIAL PRO-CRYL. PRIMER 066-310 PAINT: PRO INDUSTRIAL HIGH PERFORMANCE ACRYLIC 066-600 GLOSS	BLACK FACTORY FINISH	
EP-7	EXTERIOR PAINT	DUMPSTER WALLS	BENJAMIN MOORE	PAINT	#HC-170	GRAY STONINGTON GRAY	
EP-7	EXTERIOR PAINT	DUMPSTER GATES	BENJAMIN MOORE	PAINT	PRIMER: PRO INDUSTRIAL PRO-CRYL. PRIMER 066-310 PAINT: PRO INDUSTRIAL HIGH PERFORMANCE ACRYLIC 066-600 GLOSS	BLACK FACTORY FINISH	
EP-8	EXTERIOR PAINT	ALL EXTERIOR WALLS	BENJAMIN MOORE	PAINT: ALPHATAC ACRYLIC URETHANE CLEAR GLOSS	ANTI CARPENTER PAINT M04-00 100'S 2 COATS ON FULL FACADE SURFACE	CLEAR GLOSS	
EP-1	WOODEN VERTICAL SIDING PANEL	EXTERIOR TOWER	NICHHA	WOOD SIDING	VINTAGE WOOD	CEDAR	@ FRONT BUMP OUT
EP-8	EXTERIOR PAINT	SHUTTERS	BENJAMIN MOORE	PAINT	#OC-689	OCEANIC TEAL	

POPEYES
 505 BLUE LAGOON DRIVE
 WAKULA, FLORIDA 32091

THESE DRAWINGS ARE THE PROPERTY OF ARCHITECTURE GROUP PC AND SHALL NOT BE USED OR REPRODUCED WITHOUT THE EXPRESS WRITTEN PERMISSION FROM THE OWNER.

rchitrave
 GROUP PC
 1375 K.S. ROAD, SUITE 107
 BOYD BARR, NEW JERSEY 07001
 Phone: (732) 212-0007 Fax: (732) 212-0039
 1000 W. WASHINGTON ST., SUITE 100
 WASHINGTON, VA 22206
 1001 W. 10TH ST., SUITE 100
 DENVER, CO 80202

DE: 05-000774 SC: 0570
 SC: 10015
 NC: 12340
 VA: 01002

ARCHITECTURE GROUP PC
 1375 K.S. ROAD, SUITE 107
 BOYD BARR, NEW JERSEY 07001
 Phone: (732) 212-0007 Fax: (732) 212-0039
 1000 W. WASHINGTON ST., SUITE 100
 WASHINGTON, VA 22206
 1001 W. 10TH ST., SUITE 100
 DENVER, CO 80202

POPEYES
 1702 RALEIGH ROAD PKY NW
 WILSON, NORTH CAROLINA
 LOUISIANA KITCHEN FLD DESIGN STANDARDS
 83 SEATS / DUAL-LINE PRODUCTION PLK1771-DL

LOUISIANA KITCHEN

POPEYES

REVISIONS:
 1 CORP COMMENT 3/11/20

A5
 FRONT & REAR EXTERIOR ELEVATIONS
 DATE: 5/18/20
 PROJECT NO: G20-05
 CHECKED: JS