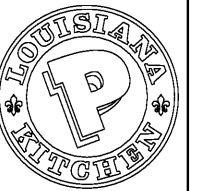


Architrave Group PC
Architrave Group PC
10000 W. BAYVIEW BLVD., SUITE 1000
MIAMI, FLORIDA 33147
Tel: (305) 221-0007 Fax: (305) 221-0099
Louisiana Kitchen Plk Design Standards
88 Seats / Dual-Line Production / PLK1711-DL

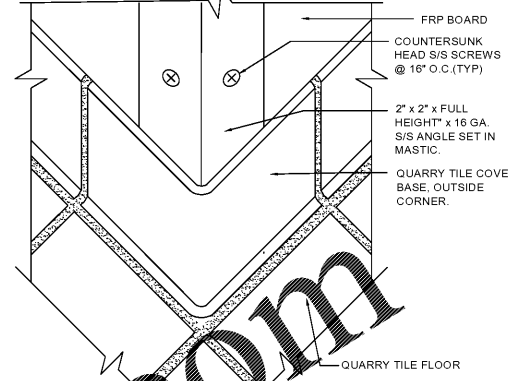


POPEYES
1702 RALEIGH ROAD PKY NW
WILSON, NORTH CAROLINA
LOUISIANA KITCHEN PLK DESIGN STANDARDS
88 SEATS / DUAL-LINE PRODUCTION / PLK1711-DL

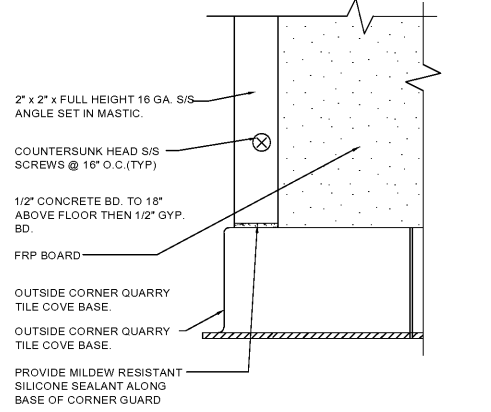


REVISIONS:
1 6/3/20 CITY WILSON COMMENT
2 6/16/20 HEALTH COMMENT

A2
FLOOR FINISH PLAN &
INTERIOR FINISH SCHEDULE
DATE: 5/18/20
PROJECT NO: G20-05
CHECKED: JS



KITCHEN CORNER GUARD ISOMETRIC VIEW



KITCHEN CORNER GUARD ELEVATION VIEW

SPECIFICATIONS:

DIVISION 9: FINISHES

SECTION 9100: TILE

SCOPE: FURNISH AND INSTALL ALL TILE FLOORS AND WALLS.
QUALITY CONTROL: ALL TILE MATERIALS AND INSTALLATIONS SHALL CONFORM TO THE RECOMMENDED PRACTICES OF THE TILE COUNCIL OF AMERICA.
REFER TO NATIONAL ACCOUNTS DIRECTORY FOR TILE SUPPLIER

- MATERIALS**
- CERAMIC AND QUARRY TILE AS SHOWN ON FINISH SCHEDULE.
 - GROUT:
 - JOINTS IN FLOOR AND BASE: EPOXY IS RECOMMENDED - HYDROMENT V-POXY AARII OR ALTERNATE HYDROMENT SANDED JOINT FILLER AS MANUFACTURED BY THE UPCO COMPANY OR EQUAL CUSTOM BUILDING PRODUCTS. COLOR AS SHOWN ON FINISH SCHEDULE.
 - JOINTS IN WALL: HYDROMENT TILE-MATE UNSANDED JOINT FILLER, T19 DRY TILE GROUT AS MANUFACTURED BY THE UPCO COMPANY OR EQUAL CUSTOM BUILDING PRODUCTS. COLOR AS SHOWN ON FINISH SCHEDULE.
 - CONCRETE TILE BACKER BOARD:
 - DUROCK WALLABLE CONCRETE BACKER BOARD BY USG INDUSTRIES, INC., 101 S. DR., CHICAGO, IL 60606 ATTN: DEPT. #TOS-585. TO BE INSTALLED PER MANUFACTURER'S SPECIFICATIONS.

PERFORMANCE

- INSTALLATION:
 - INTERIOR CERAMIC WALL TILE SHALL BE INSTALLED IN ACCORDANCE WITH TILE COUNCIL METHOD W 243 GYPSUM BOARD, LATEX PORTLAND CEMENT BOND COAT WITH HYDROMENT TILE-MATE 710 WITH FLEX-A-LASTIC ADDITIVE.
 - INTERIOR FLOOR TILE AND BASE SHALL BE INSTALLED IN ACCORDANCE WITH TILE COUNCIL THIN-SET METHOD F113 DRY SET MORTAR OR LATEX PORTLAND CEMENT MORTAR WITH HYDROMENT TILE-MATE 760 WITH FLEX-A-LASTIC ADDITIVE IN ALL AREAS EXCEPT KITCHEN & RESTROOMS WHERE SLAB IS DERESSED 2" - USE THICK SET METHOD AS DESCRIBED BELOW IN ITEM #2. -SLOPE FLOOR PER FOUNDATION PLAN.
 - JOINTS IN FLOOR AND BASE JOINTS IN FLOORS AND BASE IN FOOD PREP, SUPPLY, SALES, UTILITY WASH, AND TOILETS TO BE INSTALLED IN ACCORDANCE WITH THE TILE COUNCIL METHOD OF #115 DRY-SET MORTAR WITH EPOXY GROUT IN LIEU OF CEMENT BASE GROUT. GROUT SHALL BE HYDROMENT U-POXY AARII ALTERNATE "HYDROMENT JOINT FILLER" BY THE UPCO CO., IN ACCORDANCE WITH MANUFACTURER'S DIRECTIONS. JOINTS SHALL BE 1/4" WIDE AND COMPLETELY FILLED WITH THE SHOULDER OF THE TILE AND THEN TOOKED TO A SMOOTH DENSE FINISH.
 - JOINTS IN WALL TILE SHALL BE GROUTED WITH HYDROMENT JOINT FILLER IN ACCORDANCE WITH MANUFACTURER'S INSTRUCTIONS AND SHALL BE DAMP CURED. THE TILE SHALL BE CLEANED OF SURFACE GROUT AS WORK PROCEEDS USING DRY GROUT AND BURLAP CLOTH. NO ACID CLEANER SHALL BE USED.
- CLEAR SILICONE SEALANT AROUND PERIMETER TILE EDGES WHEN ABUTTING TO OTHER MATERIALS.

SECTION 9105: PAINTING

GENERAL PROVISIONS

- SCOPE: SUPPLY ALL LABOR, MATERIALS, AND EQUIPMENT NECESSARY FOR THE PROPER PAINTING AND FINISHING OF THE BUILDING.

MATERIALS

- PAINT BRANDS AND COLORS ARE GIVEN IN THE FINISH SCHEDULE TO SHOW EXACT COLOR REQUIRED. UNSPECIFIED BRANDS OF MATERIALS SUCH AS SHELLAC, TURPENTINE, THINNER, ETC., SHALL BE PURE AND OF THE BEST QUALITY OBTAINABLE. ALL MATERIALS SHALL BE USED WITHOUT ALTERATIONS AND ONLY AS SPECIFIED BY THE PAINT MANUFACTURER.
- PUTTY AND FILLERS SHALL BE AS RECOMMENDED BY THE PAINT MANUFACTURER.
- CAULKING MATERIAL SHALL BE "MONO" ACRYLIC TERPOLYMER SEALANT, WHITE COLOR, BY TREMCO MANUFACTURING CO., CLEVELAND, OH, OR APPROVED EQUAL.

PERFORMANCE

- WORKMANSHIP: ALL SURFACES TO BE PAINTED SHALL BE CLEAN AND FREE OF DIRT, DUST, OR GRIT BEFORE PAINTING IS STARTED. PAINTING SHALL NOT BE DONE WHEN THERE IS SWEEPING OR EXCESSIVE DUST IN THE AIR. ALL PITCH STREAKS, RESIN SPOTS, ETC., SHALL BE CLEANED OF ALL RESIDUE AND TOUCHED UP WITH SHELLAC BEFORE PAINTING. PUTTY ALL NAIL HOLES, CRACKS, ETC., IN WOODWORK AFTER THE FIRST COAT IS APPLIED. WHERE THE WOOD DOES NOT DRY TO A UNIFORM SHEEN OVER THE ENTIRE SURFACE, SPOT PRIME THE AREAS THAT INDICATE SUCTION BEFORE APPLYING FINISH COATS. UNDERCOATS OF PAINT SHALL BE TINTED TO A COLOR APPROXIMATING THE FINISH COATS, WITH ENOUGH VARIATION IN COLOR TO PERMIT VISUAL INSPECTION OF MATERIALS DURING THIS WORK. ALL MATERIALS SHALL BE EVENLY SPREAD AND FLOWED ON WITHOUT RUNS, SAP, OR EXCESSIVE BRUSH MARKS.
- STEEL DOORS, FRAMES, GATES, PIPE GUARDS, LIGHT POLES, EXPOSED SIGN SUPPORTS, GAS PIPES, HANDRAILS, AND OTHER FREE-STANDING METAL ACCESSORIES:
 - PRE-PRIMED: TWO (2) ADDITIONAL COATS OF EXTERIOR ENAMEL BENJAMIN MOORE OVER FINELY-SANDED PRIMER. SEE FINISH SCHEDULE FOR COLOR.
 - BARE METAL: TWO (2) COATS BENJAMIN MOORE OVER TWO (2) COATS FINELY-SANDED METAL PRIMER. SEE FINISH SCHEDULE FOR COLOR.

SECTION 96: PREFINISHED PANELS

GENERAL PROVISIONS

- SCOPE: FURNISH AND INSTALL PANELS AND MATCHING TRIM, INTERIOR PREFINISHED PANELS, TRIM, CORNER GUARDS, AND ACCESSORIES.
- NOTES: REFER TO NATIONAL ACCOUNT DIRECTORY.

MATERIALS

- MARLITE PLANKS AND TRIM, 16" X 8'-0" X 1/4", COLOR AND TEXTURE AS SHOWN ON FINISH SCHEDULE. ADHESIVE: MARLITE BRAND C-375 WATERPROOF ADHESIVE. CAULKING: MARLITE BRAND CAULKING.
- FIBERGLASS REINFORCED PANELS
 - MARLITE TYPE 1200 TOS FRP PANELS, 4' X 8' X 1/8" AND MATCHING TRIM, CLASS C/111. (USE 10' LENGTHS FOR COLORS > 8')
 - COLOR: SEE FINISH SCHEDULE. ADHESIVE: MARLITE BRAND C-375 WATERPROOF SOLVENT-BASED ADHESIVE. CAULKING: MARLITE SILICONE BRAND SEALANT.
- WHERE REQUIRED BY CODE ONLY, FIRE-RATED FRP PANELS WITH CLASS A/1 ARE AVAILABLE FOR MARLITE.

EXTRA DUTY CORNER GUARDS AT OUTSIDE WALL CORNERS IN FOOD PREP, POT WASH, AND STORAGE AREAS AS SHOWN SHALL BE MARLITE CORNER GUARDS 2" X 2" #M960FP, 96", TO EXTEND FROM TOP OF TILE BASE TO CEILING, WITH CONCEALED FASTENERS, CAULK TO MATCH.

SUBSTITUTION

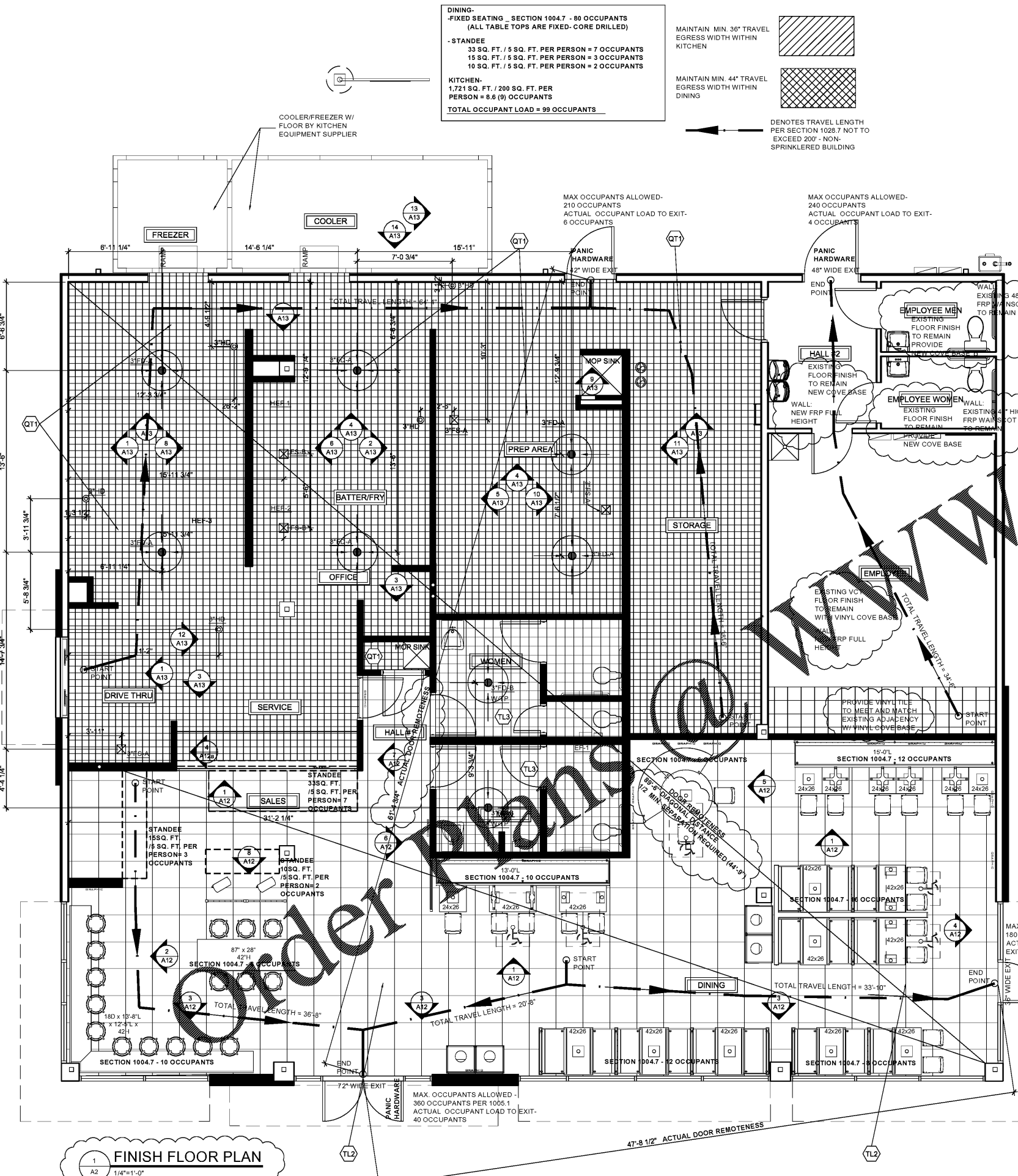
- MARLITE STAINLESS STEEL CORNER GUARDS F-560 X 96" WITH CONCEALED FASTENERS, 48", 16 GAUGE, STAINLESS STEEL CORNER GUARDS WITH 1/8" RADIUS WITH CLEAR CAULK.
- WOOD TRIM INSIDE/OUTSIDE IN DINING AREA SHALL BE 1 1/2" X 1 1/2" X MAPLE INCLUDED IN THE SEATING PACKAGE AND SHALL BE PAINTED C/M BY THE SEATING SUPPLIER AND INSTALLED BY THE G.C.

PERFORMANCE

- INSTALL MARLITE FRP PANELS IN ACCORDANCE WITH MANUFACTURER'S INSTRUCTIONS. APPLY MATCHING TRIM BEFORE INSTALLING PANELS. FLUE UP PANELS ON GYPSUM BOARD, SETTING ALL PANELS INTO TRIM IN A BED OF CLEAR CAULK. USE MARLITE SOLVENT BASED ADHESIVE C-375 OR EQUAL APPROVED BY MANUFACTURER. DO NOT APPLY WHEN TEMPERATURE IS LESS THAN 40 DEGREES F. CAULK AROUND ALL JOINTS, TRIM, AND ABUTTING EDGES WITH CLEAR SILICONE.
- INSTALL CORNER GUARDS IN ACCORDANCE WITH MANUFACTURER'S RECOMMENDATIONS. ENSURE ALL EDGES ARE DE-BURRED AND SMOOTH. CAULK WITH CLEAR CAULKING AROUND EDGES.

SECTION 99: LAMINATE WALLS

- FURNISH AND INSTALL PANELS PER MANUFACTURER'S INSTALLATION REQUIREMENTS. REFER TO FINISH SCHEDULE.
- APPLY LAMINATE TO 1/2" PLYWOOD SUBSTRATE AND ADHERE PANELS WITH MANUFACTURER'S RECOMMENDED GLUE AND ANCHORS.
- ALL JOINTS TO BE BUTTED TOGETHER.



1 FINISH FLOOR PLAN
1/4"=1'-0"

DINING - FIXED SEATING - SECTION 1004.7 - 80 OCCUPANTS
(ALL TABLE TOPS ARE FIXED-CORE DRILLED)
- STANDEE
33 SQ. FT. / 5 SQ. FT. PER PERSON = 7 OCCUPANTS
15 SQ. FT. / 5 SQ. FT. PER PERSON = 3 OCCUPANTS
10 SQ. FT. / 5 SQ. FT. PER PERSON = 2 OCCUPANTS
KITCHEN -
1,721 SQ. FT. / 200 SQ. FT. PER PERSON = 8.6 (9) OCCUPANTS
TOTAL OCCUPANT LOAD = 99 OCCUPANTS

MAINTAIN MIN. 36" TRAVEL EGRESS WIDTH WITHIN KITCHEN
MAINTAIN MIN. 44" TRAVEL EGRESS WIDTH WITHIN DINING
DENOTES TRAVEL LENGTH PER SECTION 1028.7 NOT TO EXCEED 200' - NON-SPRINKLERED BUILDING

MAX OCCUPANTS ALLOWED - 210 OCCUPANTS
ACTUAL OCCUPANT LOAD TO EXIT - 6 OCCUPANTS

MAX OCCUPANTS ALLOWED - 240 OCCUPANTS
ACTUAL OCCUPANT LOAD TO EXIT - 4 OCCUPANTS

MAX OCCUPANTS ALLOWED - 180 OCCUPANTS
ACTUAL OCCUPANT LOAD TO EXIT - 40 OCCUPANTS

MAX OCCUPANTS ALLOWED - 360 OCCUPANTS PER 1005.1
ACTUAL OCCUPANT LOAD TO EXIT - 40 OCCUPANTS

Order Plans