

SPECIFICATIONS:

SECTION 2A: CLEARING THE SITE

GENERAL PROVISIONS
1. SCOPE: FURNISH ALL MATERIALS, EQUIPMENT AND LABOR, CLEARING, EXCAVATING, REMOVAL OF RUBBISH, TRASH AND OTHER NOTED ITEMS...

SECTION 2B: SITE DRAINAGE

GENERAL PROVISIONS
1. SCOPE: FURNISH AND INSTALL STORM DRAIN PIPES, CATCH BASINS, CURBS AND GUTTERS, MANHOLES, AND RELATED ITEMS...

SECTION 2C: EARTHWORK

GENERAL PROVISIONS
1. SCOPE: FURNISH AND INSTALL PERFORM ALL GENERAL EXCAVATION, FOOTING EXCAVATION, FILLING, STRIPPING OF TOPSOIL, SITE GRADING, AND RELATED ITEMS...

SECTION 2D: SOIL POISONING

GENERAL PROVISIONS
1. SCOPE: FURNISH AND INSTALL CHEMICAL TREATMENT TO PREVENT TERMITE INFESTATION FOR AREAS TO BE COVERED BY BUILDING SLABS, FOOTINGS AND SIDEWALKS...

SECTION 2E: ROADS AND WALKS

GENERAL REQUIREMENTS
1. SCOPE: FURNISH AND INSTALL ALL CURBS AND GUTTERS, PAVING, MARKING STRIPES, AND SIDEWALKS AS SHOWN ON THE SITE PLAN AND NOTED HEREIN...

APPLY JUST PRIOR TO INSTALLATION OF VAPOR BARRIER, IF NECESSARY FOR MOISTURE PROTECTION...

GENERAL REQUIREMENTS
1. SCOPE: FURNISH AND INSTALL ALL CURBS AND GUTTERS, PAVING, MARKING STRIPES, AND SIDEWALKS AS SHOWN ON THE SITE PLAN AND NOTED HEREIN...

MATERIALS
1. CONCRETE: CAST-IN-PLACE CONCRETE AS HEREAFTER SPECIFIED IN SECTION 2A, CONCRETE.

PERFORMANCE
1. CONCRETE: EXTERIOR CONCRETE: CURBS AND GUTTERS SHALL BE ACCORDING TO DETAILS ON PLANS...

PERFORMANCE
1. CONCRETE: EXTERIOR CONCRETE: CURBS AND GUTTERS SHALL BE ACCORDING TO DETAILS ON PLANS...

E. DURING - CONCRETE SHALL BE CURED BY PROTECTING IT AGAINST LOSS OF MOISTURE, RAMP TEMPERATURE CHANGE, AND MECHANICAL INJURY FOR AT LEAST THREE (3) DAYS AFTER PLACEMENT...

F. OPENING TO TRAFFIC - THE ENGINEER SHALL DECIDE WHEN THE PAVEMENT SHALL BE OPENED TO TRAFFIC. IT SHALL NOT BE OPENED TO TRAFFIC UNTIL THE FIELD-CURED CONCRETE HAS ATTAINED A FLEXURAL STRENGTH OF 500 PSI...

2. ASPHALT:
A. PAVEMENT PREPARATION FOR SUBGRADE: MATERIAL IN SOFT SPOTS SHALL BE REMOVED TO THE DEPTH REQUIRED TO PROVIDE A FIRM FOUNDATION...

C. COMPACTION - ASPHALT BASE AND SURFACE: ROLLING SHALL START AS SOON AS THE HOT MIX MATERIAL CAN BE COMPACTED WITHOUT DISPLACEMENT. ROLLING SHALL CONTINUE UNTIL THOROUGHLY COMPACTED AND ALL ROLLER MARKS HAVE DISAPPEARED...

D. SPECIFICATIONS FOR SAMPLING AND PATCHING NEW ASPHALTIC CONCRETE PAVEMENTS
1. AT COMPLETION OF PAVING, TEST CORES SHALL BE TAKEN BY AN INDEPENDENT LABORATORY...

E. PATCHING METHOD:
A. A TACK COAT SHALL BE APPLIED TO THE SIDES OF THE CORE HOLES. THE TACK COAT MAY CONSIST OF SS-1, SS-1H, CSB-1H, RS-1, CRB-1, EMB-1, ASPHALT OR RD-TO CUTBACK ASPHALT...

SECTION 2F: SITE IMPROVEMENTS
GENERAL PROVISIONS
1. SCOPE: FURNISH AND INSTALL WOOD POSTS AND INSTALL SIGN FURNISHED BY OWNER...

SECTION 2G: LANDSCAPING

GENERAL PROVISIONS
1. SCOPE: FURNISH AND INSTALL TOPSOIL TO PROPER CONTOUR FOR ALL AREAS NOTED ON THE SITE PLAN TO BE LANDSCAPED...

AFTER CONCRETE HAS BEEN STRUCK OFF AND CONSOLIDATED, A BULLFLOAT MAY BE USED TO REMOVE ANY HIGH OR LOW SPOTS...

PERFORMANCE
1. SCOPE: FURNISH AND INSTALL TOPSOIL TO PROPER CONTOUR FOR ALL AREAS NOTED ON THE SITE PLAN TO BE LANDSCAPED...

GENERAL LANDSCAPE NOTES:

A. DESCRIPTION: WITH THE BUILDING BEING ONE OF THE MOST ATTRACTIVE FACILITIES IN FAST FOOD INDUSTRY, THE LANDSCAPING DESIGN SHOULD APPRECIABLY ENHANCE THE APPEARANCE...
B. GUIDELINES: 1. LANDSCAPE PLANS: a. ACTUAL COLOR OF ALL PLANTS AND GROUND COVER BEDS. b. SCALED AS CLOSE AS POSSIBLE...

4. WINTER CONSTRUCTION GUIDELINES:
UPON NOTIFICATION OF POSSIBLE OPENING DURING THE WINTER MONTHS, STEPS SHOULD BE TAKEN TO PROVIDE AS MUCH LANDSCAPING AS POSSIBLE...
a. POSSIBLE WINTER LANDSCAPE ALTERNATIVE(S)
i. PURCHASING PLANTS FROM MORE TEMPERATE CLIMATE ZONES...

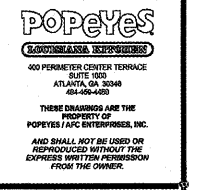
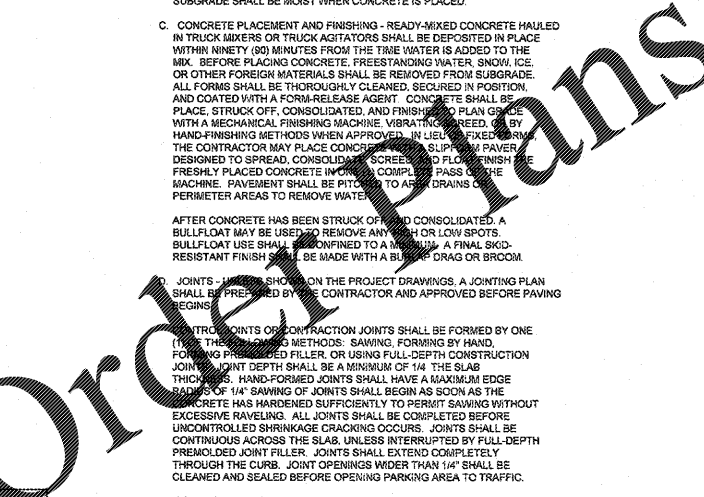
SITE/CIVIL ENGINEERING DESIGN STANDARDS:

I. GREASE WASTE
A. 4" MIN. PIPE.
B. 1,500 GALLON GREASE TRAP (VERIFY WITH LOCAL HEALTH DEPARTMENT)
C. MINIMUM COVER ABOVE INVERT AT INTERCEPTOR IS 3'-0"
D. "OUT" INVERT OF INTERCEPTOR IS 2' BELOW "IN" INVERT...

IV. DRAINAGE
A. MINIMUM 12" C.M.P.
B. MAXIMUM DRAINAGE AREA PER CATCH BASIN = 12,500 SQ. FT. (AS PER ZONING)
C. DESIGN VELOCITY = 2.5' F.P.S. (ALLOWABLE RANGE 1 F.P.S. TO 6 F.P.S.)

DETAIL NOTES:

- 1. CONTRACTOR SHALL REVIEW ALL DETAILS PRIOR TO ANY CONSTRUCTION AND REPORT ANY DISCREPANCIES TO THE OWNER AND ENGINEER IMMEDIATELY.
2. ALL DETAILS ON SHEETS SD-1 THROUGH SD-5 SHALL BE COORDINATED WITH THE OWNER AND GOVERNING JURISDICTION PRIOR TO ANY CONSTRUCTION.
3. THE CONTRACTOR IS RESPONSIBLE FOR ENSURING ALL STANDARDS AND DETAILS SHOWN ON THESE PLANS MEET ALL LOCAL AND STATE REQUIREMENTS PRIOR TO ANY CONSTRUCTION...



THESE DOCUMENTS ARE NOT FOR PERMIT OR CONSTRUCTION. THEY MUST BE COMPLETED AND/OR MODIFIED BY A LICENSED ARCHITECT AND ENGINEER TO CONFORM TO ALL LOCAL AND APPLICABLE CODES AND SPECIFIC SITE CONDITIONS...

POPEYES LK 1260-DL-PLUS PROTOTYPE E.I.F.S. / SIMULATED STONE LOUISIANA KITCHEN LK-PLUS DESIGN STANDARDS 60 SEATS / DUAL-LINE PRODUCTION



REVISIONS:
DATE: 03/29/13
SD5
CHECKED: KR

