

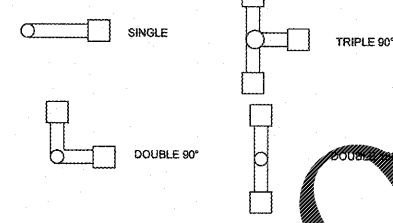
UTILITY NOTES: GENERAL

1. ALL UTILITY CONSTRUCTION SHALL CONFORM TO THE LOCAL UTILITIES DEPARTMENT STANDARDS AND SPECIFICATION, AND WILL BE SUBJECT TO THEIR INSPECTION AND ACCEPTANCE.
2. THE LOCATION OF EXISTING UTILITIES SUCH AS WATER MAINS, SEWERS, GAS LINES, ETC., AS SHOWN ON THE PLANS HAVE BEEN DETERMINED FROM THE BEST AVAILABLE INFORMATION AND IS GIVEN FOR THE CONVENIENCE OF THE CONTRACTOR ASSUME RESPONSIBILITY FOR THE ACCURACY OF THE LOCATED IN THE FIELD PRIOR TO START OF CONSTRUCTION.
3. THE CONTRACTOR SHALL IMMEDIATELY NOTIFY THE ENGINEERS OF ANY DISCREPANCIES FOUND BETWEEN THE PLANS AND FIELD CONDITIONS PRIOR TO START OF CONSTRUCTION.
4. THE CONTRACTOR SHALL COORDINATE ALL WORK WITH THE EXISTING UTILITY EASEMENT.
5. CONTRACTOR SHALL INSPECT PIPING AND MATERIALS BEFORE INSTALLATION TO DETECT APPARENT DEFECTS.
6. CLEAR INTERIOR OF PIPE OF DIRT AND OTHER SUPERFLUOUS MATERIAL AS WORK PROGRESSES. MAINTAIN SWAB OR DRAG IN LINE AND PULL PAST EACH JOINT AS IT IS COMPLETED. PLACE PLUGS IN ENDS OF UNCOMPLETED CONDUIT WHENEVER WORK STOPS.
7. MAINTAIN MINIMUM COVER AND SPACING PER LOCAL CODES.
8. WHERE APPLICABLE, UTILITY TRENCHES CROSSING PAVEMENT AREAS SHALL BE BACK FILLED W/ COMPACTED GRANULAR MATERIAL IN ACCORDANCE WITH A.A.S.H.T.O.-T-99

ORDER CONFIRMATION BOARD INSTALLATION

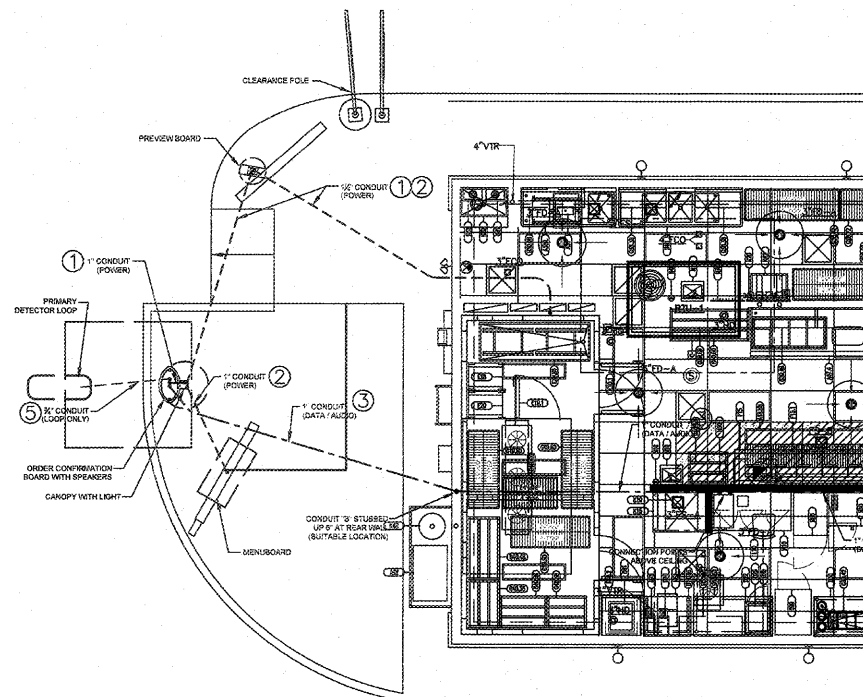
1. PRIOR TO INSTALLATION CONFIRM ALL INSTALLATION REQUIREMENTS WITH THE VENDOR.
2. BEFORE THE OCB CAN BE INSTALLED THERE ARE CERTAIN REQUIREMENTS, WHICH ARE DETAILED BELOW:
 - a. CONCRETE BASE HAS TO BE POURED, CURED AND PROPERLY SET IN PLACE
 - b. THE DIMENSIONS OF THE BASE NEED TO BE A MINIMUM OF:
 - 24 INCHES DEEP
 - 24 INCHES LONG
 - 32 INCHES WIDE
3. THE FOUR ANCHOR BOLTS (INCLUDED WITH THE OCB) NEED TO BE INSERTED TO FORM A RECTANGLE: 13.8 INCHES BY 8.7 INCHES THE LONG SIDE OF WHICH IS PARALLEL TO THE LONGEST SIDE OF THE CONCRETE BASE. THE FRONT TWO BOLTS NEED TO BE DRILLED 0.4 INCHES FROM THE CURB EDGE TO COMPLY WITH THE REQUIREMENTS THAT THE OCB SCREEN BE 11.8 INCHES FROM THE CURB EDGE.
4. THERE ARE FOUR HOLES SET OUT FOR YOU. ENSURE EACH HOLE IS 7.8 INCHES DEEP AND 0.8 INCHES IN DIAMETER. DRILL OUT IF THE CONCRETE HAS FILLED IN.
5. WITHIN THESE HOLES 4 ANCHOR BOLTS (INCLUDED WITH THE OCB) NEED TO BE SECURED WITH 2-PACK RESIN ADHESIVE (INCLUDED WITH THE OCB) WHICH SHOULD COMPLETELY FILL EACH HOLE.
6. THE ANCHOR BOLTS ARE 11.8 INCHES IN LENGTH AND 0.8 INCHES IN DIAMETER.
7. THE ANCHOR BOLTS SHOULD PROTRUDE 3.8 INCHES FROM GROUND LEVEL, IN ORDER TO MOUNT THE OCB PROPERLY.
8. THE ADHESIVE SHOULD BE ALLOWED TO SET FOR 30 MINUTES BEFORE MOUNTING THE OCB.
9. TWO (2) 1 INCH DIAMETER CONDUITS NEED TO OPEN IN THE CENTER OF THE RECTANGLE FORMED BY THE ANCHOR BOLTS TO CARRY:
 - MAIN POWER
 - WIRE FLENUM VISA; AUDIO CABLE; RG59 CABLE FOR CAMERA
10. THE CONDUITS NEED TO BE A MINIMUM OF 1 INCH IN DIAMETER IN ORDER TO HOLD ALL THE REQUIRED CABLING. THERE CAN BE NO BREAKS IN THE CONDUIT AND A FLEXIBLE CONDUIT MUST BE USED. THIS MUST RUN FROM THE OCB BOX TO THE STORE. COMPLETE DRAW WIRING ARE TO BE LEFT IN EACH CONDUIT. ONCE THE CONDUITS HAVE BEEN LAID, AND THE BASE IS CONCRETED IN (AS SHOWN ABOVE), PLEASE ENSURE YOU BAG THE ENDS OF THE CONDUIT TO ENSURE NO MOISTURE OR CONCRETE RUNS DOWN THE CONDUIT.
11. THE MAIN POWER IS TO BE TRENCHED BACK AND RUN THROUGH CONDUIT TO THE RESTAURANT AND THEN TO THE MAIN POWER DISTRIBUTION BOARD. THE POWER CABLE SHOULD BE RUN IN ITS OWN CONDUIT SEPARATE FROM ALL OTHER COMMUNICATIONS CABLES. IF THE CABLES ARE TO BE RUN UP THE WALL THEN 1 INCH X 1 INCH GALVANIZED TRUNKING SHOULD BE USED. ENTRY TO THE BUILDING IS BEST TO BE MADE AT CEILING LEVEL.
12. THE VGA AND AUDIO CABLES SHOULD BE RUN IN THE SECOND ONE-INCH DIAMETER CONDUIT. THEY SHOULD BE TRENCHED AND RUN INTO THE RESTAURANT AS DOCUMENTED. DO NOT RUN POWER AND COMMUNICATION CABLES IN THE SAME CONDUIT!
13. THE ROAD INDUCTION LOOP (ONE 1 INCH DIAMETER FLEXI-TUBING) IS TO BE SET INTO THE ROAD LANE, WITH THE RETURN CABLE ALSO COMING OUT IN THE CENTER OF THE OCB BASE WITH THE 2 OTHER CONDUITS.

HEAD SPECIFICATIONS



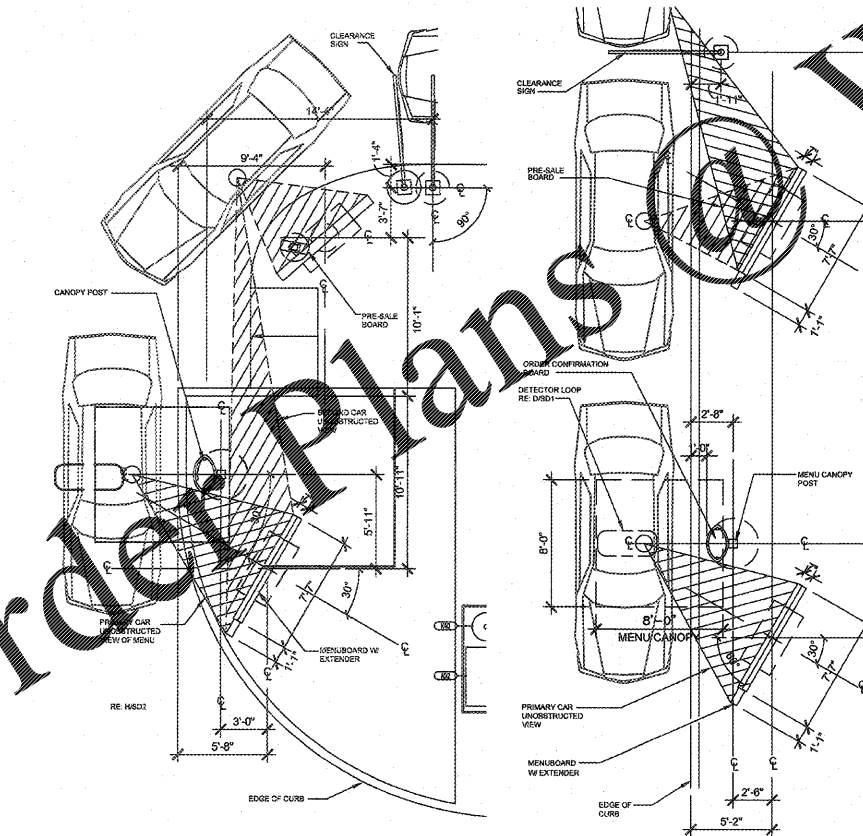
DETAIL NOTES:

1. CONTRACTOR SHALL REVIEW ALL DETAILS PRIOR TO ANY CONSTRUCTION AND REPORT ANY DISCREPANCIES TO THE OWNER AND ENGINEER IMMEDIATELY.
2. ALL DETAILS ON SHEETS SD-1 THROUGH SD-5 SHALL BE COORDINATED WITH THE OWNER AND GOVERNING JURISDICTION PRIOR TO ANY CONSTRUCTION.
3. THE CONTRACTOR IS RESPONSIBLE FOR ENSURING ALL STANDARDS AND DETAILS SHOWN ON THESE PLANS MEET ALL LOCAL AND STATE REQUIREMENTS PRIOR TO ANY CONSTRUCTION. LOCAL AND STATE DETAILS, STANDARDS AND SPECIFICATIONS SHALL ALWAYS TAKE PRECEDENCE.



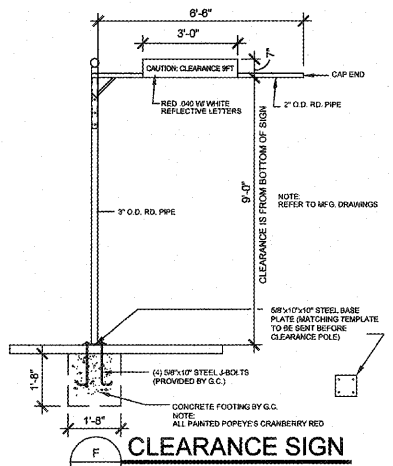
CONNECTION

1	DEDICATED 120V SINGLE PHASE CONSTANT POWER TO OCB
2	120V SINGLE PHASE POWER FOR CANOPY LIGHTS, MENUBOARD AND PREVIEW BOARD
3	OCB DATA AND SPEAKER CABLES CONNECT TO POS RACK IN OFFICE (PULL WITHOUT CONNECTORS)
4	AUDIO CABLES FOR SPEAKERS CONNECT TO MAIN UNIT AT THE DRIVE-THRU WINDOW
5	PRIMARY DETECTOR LOOP WIRE CONNECTS
6	SECONDARY DETECTOR LOOP CONNECTS TO POS THROUGH TRUNKING SYSTEM



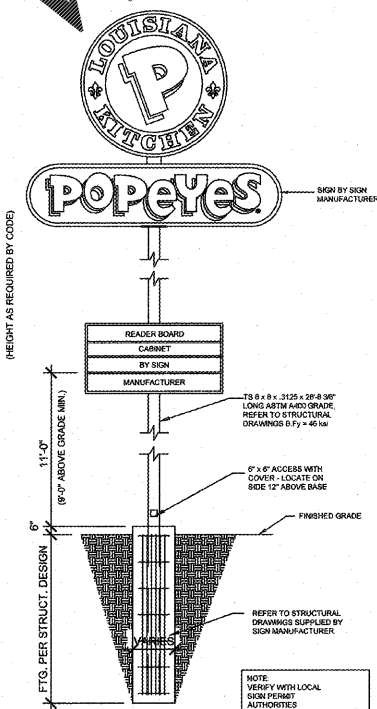
B MENUBOARD/PRESALE
SD2 1:50

C ALT MENUBOARD/PRESALE
SD2 1:50

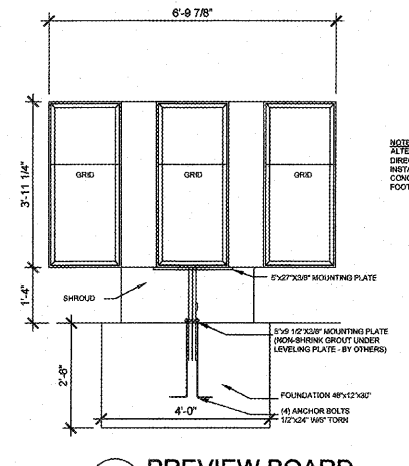


F CLEARANCE SIGN
SD2 NTS

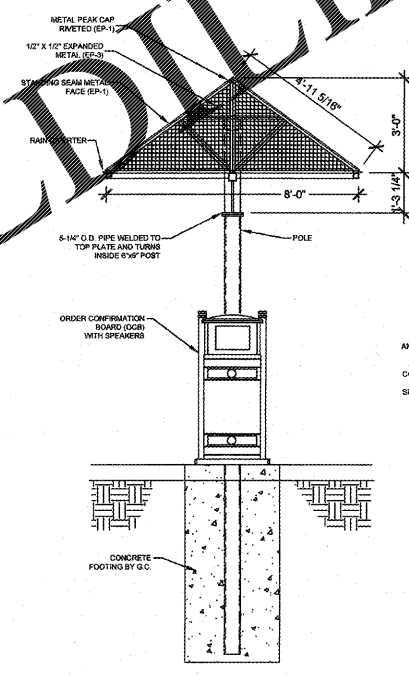
A DRIVE-THRU CONNECTIONS
SD2 3/16"=1'-0"



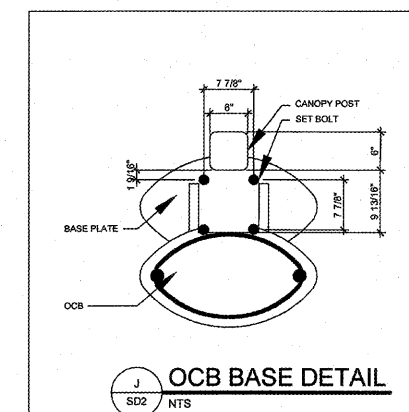
I TYPICAL PYLON SIGN
SD2 NTS



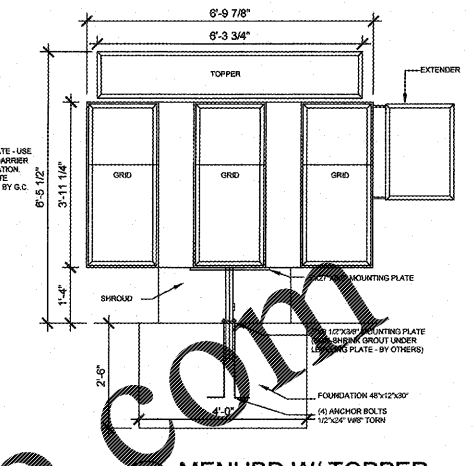
G PREVIEW BOARD
SD2 1/2"=1'-0"



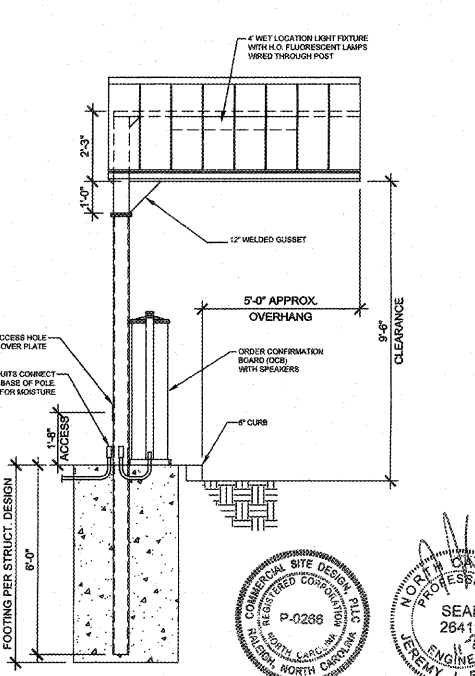
D DRIVE THRU CANOPY W/ ORDER CONFIRMATION BOARD
SD2 3/8"=1'-0"



J OCB BASE DETAIL
SD2 NTS



H MENUBOARD W/ TOPPER
SD2 1/2"=1'-0"



E OCB, LOOP & POST DETAIL
SD2 NTS

POPEYES
LOUISIANA KITCHEN
400 PERIMETER CENTER TERRACE
SUITE 300
ATLANTA, GA 30349
404-485-4485
THESE DRAWINGS ARE THE PROPERTY OF POPEYES / AFC ENTERPRISES, INC. AND SHALL NOT BE USED OR REPRODUCED WITHOUT THE EXPRESS WRITTEN PERMISSION FROM THE OWNER.

THESE DOCUMENTS ARE NOT FOR PERMIT OR CONSTRUCTION. THEY MUST BE COMPLETED AND/OR MODIFIED BY A LICENSED ARCHITECT AND ENGINEER TO CONFORM TO ALL LOCAL AND APPLICABLE CODES AND SPECIFIC SITE CONDITIONS. THERE IS NO WARRANTY, WHETHER IMPLIED OR EXPRESSED, THAT THESE DOCUMENTS MEET THE APPLICABLE CODE REQUIREMENTS. LIABILITY FOR THE DESIGN AND ANY USE OF THE DOCUMENTS IS THE SOLE RESPONSIBILITY OF THE ARCHITECT AND ENGINEER OF RECORD.

POPEYES
LK 1260-DL-PLUS PROTOTYPE
E.I.F.S. / SIMULATED STONE
LOUISIANA KITCHEN LK-PLUS DESIGN STANDARDS
60 SEATS / DUAL-LINE PRODUCTION



REVISIONS:

DATE: 03/29/13

SD2a

CHECKED: KR