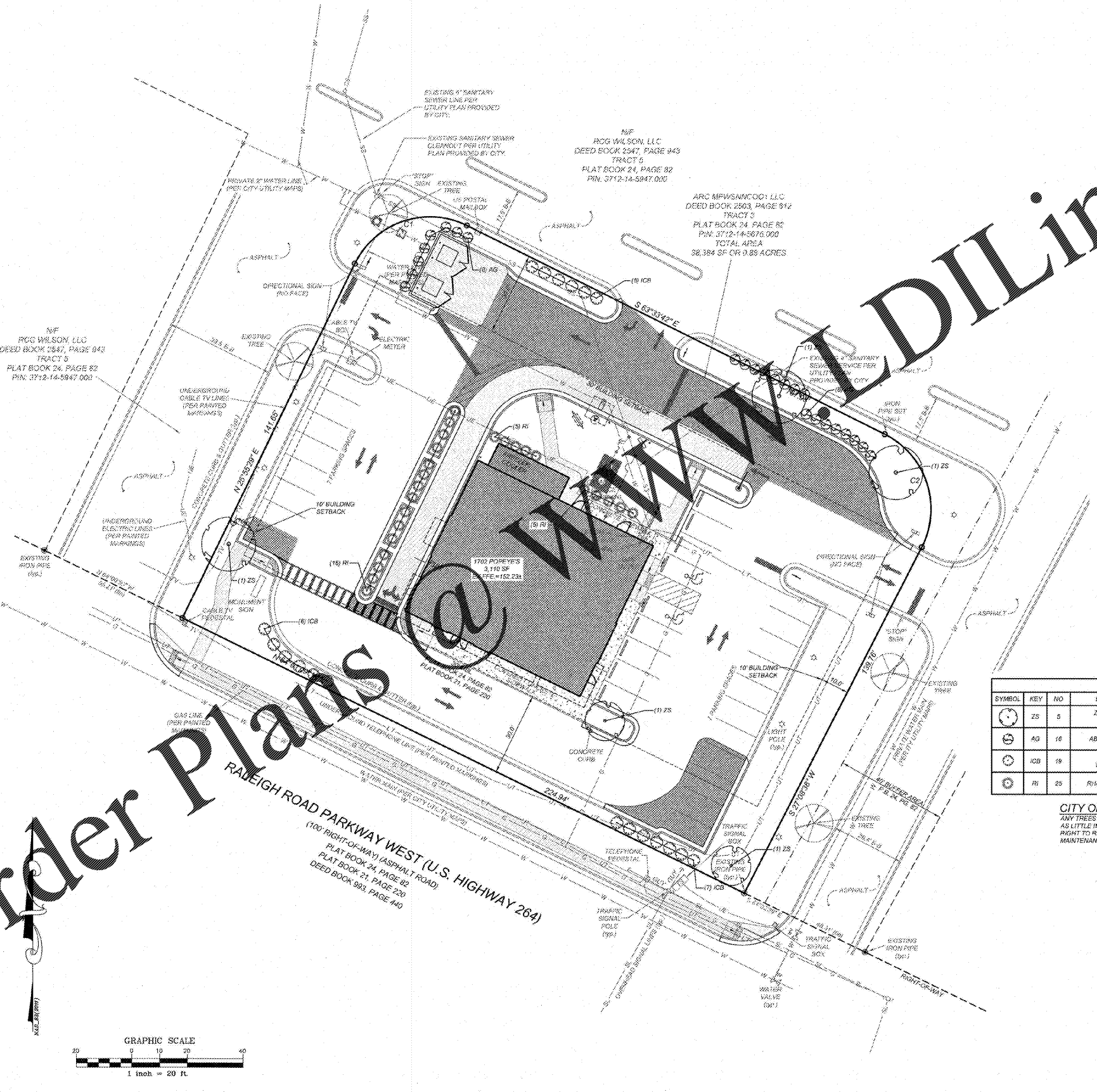


**TURF NOTES:**

- CHISEL COMPACTED AREAS AND SPREAD TOPSOIL 3 INCHES DEEP OVER ADVERSE SOIL CONDITIONS, IF AVAILABLE.
  - RIP ENTIRE AREA TO 6 INCHES IN DEPTH.
  - REMOVE ALL LOOSE ROCK, ROOTS, AND OTHER OBSTRUCTIONS LEAVING SURFACE REASONABLY SMOOTH AND UNIFORM.
  - APPLY AGRICULTURAL LIME, FERTILIZER, AND SUPERPHOSPHATE UNIFORMLY AND MIX WITH SOIL (SEE BELOW).
  - CONTINUE TILLAGE UNTIL A WELL-PULVERIZED, FIRM, REASONABLY UNIFORM SEEDBED IS PREPARED 4 TO 6 INCHES DEEP.
  - SEED ON A FRESHLY PREPARED SEEDBED AND COVER SEED LIGHTLY WITH SEEDING EQUIPMENT OR CULTIPACK AFTER SEEDING.
  - MULCH IMMEDIATELY AFTER SEEDING AND ANCHOR MULCH.
  - INSPECT ALL SEEDING AREAS AND MAKE NECESSARY REPAIRS OR RESEEDINGS WITHIN THE PLANTING SEASON. IF STAND SHOULD BE OVER 60% DAMAGED, RE-ESTABLISH FOLLOWING ORIGINAL LIME, FERTILIZER AND SEEDING RATES.
  - CONSULT CONSERVATION INSPECTOR ON MAINTENANCE TREATMENT AND FERTILIZATION AFTER PERMANENT COVER IS ESTABLISHED.
- \*APPLY: AGRICULTURAL LIMESTONE - 2 TONS/ACRE (3 TONS/ACRE IN CLAY SOILS)  
 FERTILIZER - 1,000 LBS/ACRE - 10 TO 10  
 SUPERPHOSPHATE - 500 LBS/ACRE 20% ANALYSIS  
 MULCH - 2 TONS/ACRE - SMALL GRAIN STRAW  
 ANCHOR - ASPHALT EMULSION @ 300 GAL/ACRE
- SOD PREPARATION:  
 FOLLOW PREPARATION AS DIRECTED FOR STEPS 1-5 ABOVE. IMMEDIATELY WATER SOD UPON INSTALLATION AND CONTINUE UNTIL ROOTS ARE ESTABLISHED.
- CONTRACTOR SHALL WATER AND MAINTAIN ALL LAWN AREAS UNTIL AN ACCEPTABLE STAND OF GRASS HAS BEEN ESTABLISHED.
  - ONCE AN ACCEPTABLE STAND OF GRASS HAS BEEN ESTABLISHED, THE CONTRACTOR SHALL REPAIR ALL DAMAGED AREAS AND MONITOR THE LAWN AREAS UNTIL THE GRASS REACHES A HEIGHT OF 4 INCHES TALL.
  - AT THE TIME THE GRASS REACHES A HEIGHT OF 4 INCHES TALL, THE CONTRACTOR SHALL MOW THE GRASS TO THE HEIGHT OF 3 INCHES AND TURN OVER THE LAWN MAINTENANCE TO THE OWNER.
  - AN ACCEPTABLE STAND OF GRASS SHALL BE 92% COVERAGE OR BETTER.

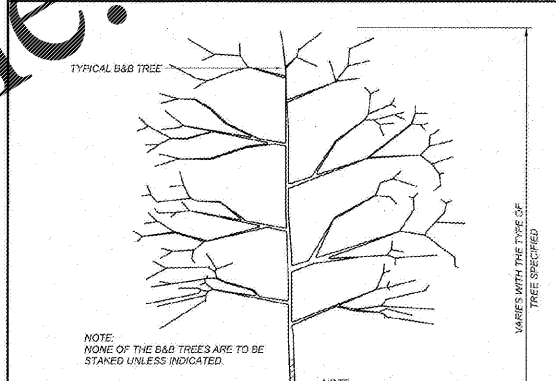
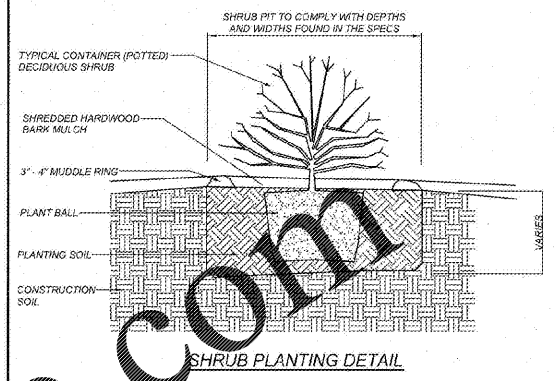
**LANDSCAPE NOTES:**

- THE GENERAL CONTRACTOR SHALL LEAVE THIS SITE AT FINISHED GRADE. THE LANDSCAPE CONTRACTOR SHALL REVISE GRADES AT A MINIMUM TO ENSURE SMOOTH TRANSITIONS BETWEEN PLANTING BEDS AND LAWN AREAS.
- PLANT GUARANTEE: ALL PLANTS SHALL BE GUARANTEED TO LIVE FOR TWELVE MONTHS. THE GUARANTEE SHALL COMMENCE UPON FINAL ACCEPTANCE OF THE PROJECT. IF ANY PLANTS ARE DEAD OR IN AN UNHEALTHY CONDITION BEFORE FINAL ACCEPTANCE, THE LANDSCAPE CONTRACTOR SHALL REPLACE THEM AT HIS EXPENSE. THIS REPLACEMENT SHALL NOT BE CONSIDERED A GUARANTEED REPLACEMENT.
- ALL PLANTING SHALL BE PLACED WITHIN A MULCHED PLANTING BED. ALL STRAPPING AND THE TOP 20% OF WIRE BASKETS MUST BE CUT AWAY AND REMOVED FROM ROOT BALLS PRIOR TO BACKFILLING PLANTING PIT. REMOVE TOP 1/3 OF BURLAP FROM ROOT BALL.
- ALL LANDSCAPE WORK SHALL BE IN ACCORDANCE WITH CURRENT CITY STANDARD DETAILS AND SPECIFICATIONS.
- ALL AREAS NOT MULCHED SHALL BE SEEDED OR SODDED IN ACCORDANCE WITH THE AREA SPECIFIED ON PLANS WITH "REBEL" HYBRID TALL FESCUE OR EQUIVALENT AS PRESCRIBED IN THE SEEDING SCHEDULE AS SHOWN ON THIS SHEET.
- SITE LIGHTING SHALL NOT BE PLACED IN CONFLICT WITH PLANTED TREES.
- TREE PROTECTION FENCINGS TO BE PROVIDED AROUND TREE PRESERVATION AREAS IN ACCORDANCE WITH CITY STANDARDS.
- COORDINATE ALL WORK WITH SITE LAYOUT AND SITE GRADING, DRAINAGE & UTILITIES PLAN.
- VERIFY LOCATION OF UTILITIES BEFORE PLANTING.
- MULCH ALL AREAS THAT ARE NOT SEEDED OR SODDED WITH SHREDDED HARDWOOD MULCH TO A DEPTH OF 3"-4".
- THE SELECTION AND INSTALLATION OF PLANTS AND PLANTING METHODS SHALL CONFORM WITH THE STANDARDS OF THE AMERICAN ASSOCIATION OF NURSERYMEN OR THE CITY STANDARD DETAILS AND SPECIFICATIONS, WHICHEVER IS STRICTER.
- CONTRACTOR IS RESPONSIBLE FOR VERIFYING ALL QUANTITIES. QUANTITIES SHALL RULE OVER PLANT LISTS.
- SUBSTITUTIONS SHALL BE SUBMITTED TO LANDSCAPE ARCHITECT FOR APPROVAL. PRIOR TO INSTALLATION, SUBSTITUTIONS MAY REQUIRE ADDITIONAL APPROVAL BY THE GOVERNING JURISDICTION.
- ALL LANDSCAPING SOIL AND FILL SHALL BE FREE FROM WEEDS, REFUSE, AND DEBRIS AT ALL TIMES.
- TREES AND LARGE SHRUBS SHALL BE ADEQUATELY SUPPORTED, AS NECESSARY USING STAKES AND GUYS. SUCH SUPPORTS SHALL BE DESIGNED SO AS TO PROTECT TREES AND SHRUBS FROM INJURY. TREES AND SHRUBS SHALL BE FASTENED TO THE SUPPORT WITH AN ACCEPTABLE COMMERCIAL TREE TIE OF PLASTIC OR HOSE COVERED WIRE.
- THE MAXIMUM GROWTH HEIGHT OF ANY LANDSCAPING WITHIN THE SIGHT TRIANGLE SHALL BE THREE (3) FEET IN HEIGHT.



NOTE: IN SOME CASES THE MULCH IS ONLY A SPECIFIED DIAMETER. SEE PLANS AND SPECIFICATIONS FOR FURTHER COORDINATION OF MULCHING.

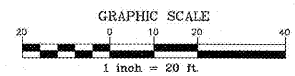
NOTE: PRUNE SHRUB AS RECOMMENDED BY GROWER ONLY AFTER THE PLANT HAS BEEN WATERED INTO THE PLANTING SOIL.



PLANTING SCHEDULE (SEE LANDSCAPING NOTE #12)

SYMBOL	KEY	NO	BOTANICAL NAME	COMMON NAME	CALIPER	HEIGHT	ROOT	COMMENTS
⊙	ZS	5	ZELKOVA SERRATA VILLAGE GREEN	VILLAGE GREEN ZELKOVA	1.5" - 2"	8' - 10'	B & B	CANOPY TREE
⊙	AG	16	ABELIA GRANDIFLORA	GLOSSY ABELIA	-	24"	CONT. 1 GAL. MIN	EVERGREEN SHRUB
⊙	ICB	19	ILEX CORNUTA BURFORDII WANK	DWARF BURFORD HOLLY	-	24"	CONT. 3 GAL. MIN	EVERGREEN SHRUB
⊙	RI	25	RHAPHOLEPSIS INDICA	PINK INDIAN HAWTHORNE	-	24"	CONT. 3 GAL. MIN	EVERGREEN SHRUB

**CITY OF WILSON NOTE:**  
 ANY TREES TO BE LOCATED NEAR NATURAL GAS FACILITIES WILL NEED TO BE PLANTED SO AS TO HAVE AS LITTLE IMPACT ON THE FACILITIES AS POSSIBLE WHEN FULLY MATURE. THE CITY WILL RESERVE THE RIGHT TO REMOVE TREES, WITHOUT ADDITIONAL TREES BEING REPLANTED, SHOULD FUTURE MAINTENANCE ISSUES EMERGE.



**COMMERCIAL SITE DESIGN**

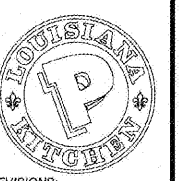
882 CREEDMOOR ROAD  
 RALEIGH, NORTH CAROLINA 27603

(919) 848-6021 FAX: (919) 848-5781  
 WWW.CSITDESIGN.COM

CLIENT:  
 WILDOOR RESTAURANT GROUP  
 7488 SIEMENS ROAD  
 WENDELL  
 NORTH CAROLINA 27591

PROJECT:  
 POPEYES  
 1702 RALEIGH ROAD PARKWAY WEST  
 WILSON, NORTH CAROLINA

LANDSCAPE PLAN



REVISIONS:

DATE	COMMENTS
11-12-19	CITY COMMENTS
12-06-19	CITY COMMENTS #2
06-10-20	BUILDING FOOTPRINT

PROJECT NO: POP-1904  
 FILENAME: POP1904-LS  
 DRAWN BY: DDH  
 SCALE: 1" = 20'  
 DATE: 10-02-2019  
 SHEET NO: C-9

**COMMERCIAL SITE DESIGN**

882 CREEDMOOR ROAD  
 RALEIGH, NORTH CAROLINA 27603

(919) 848-6021 FAX: (919) 848-5781  
 WWW.CSITDESIGN.COM