

SUPPLIERS, OR VENDORS, ANY SHEET NUMBERING SYSTEM USED WHICH IDENTIFIES DISCIPLINES IS SOLELY TO SEPARATE ARCHITECT'S AND ENGINEER'S SCOPE. IT DOES NOT DEFINE A SUBCONTRACTOR'S SCOPE OF WORK. ANY DISCREPANCIES BETWEEN DRAWINGS, SPECIFICATIONS, CODES OR CONSTRUCTION SEQUENCING SHALL BE BROUGHT TO THE ATTENTION OF THE ARCHITECT PRIOR TO PROCEEDING. NO CONSIDERATION WILL BE GIVEN TO REQUESTS FOR CHANGE ORDERS FOR FAILURE TO OBTAIN AND REVIEW THE COMPLETE SET OF CONSTRUCTION DOCUMENTS, OR FOR FAILURE TO SEEK INTERPRETATION FROM ARCHITECT FOR DISCREPANCIES.



421 Penman Street, Suite 200, Charlotte, NC 28203  
 Email: esd@esdarch.com • Phone: 704-373-1900



6/5/2020

STRICKLAND BROTHERS  
 10 MINUTE OIL CHANGE  
 810 SOUTH MAIN STREET  
 GRAHAM, NC



ELECTRICAL  
 POWER PLAN

ISSUE DATE: 6/5/20

REVISION 1: \_\_\_\_\_  
 REVISION 2: \_\_\_\_\_  
 REVISION 3: \_\_\_\_\_  
 REVISION 4: \_\_\_\_\_

PROJECT #: 20-127  
 CONTENT: \_\_\_\_\_

PROJECT ARCHITECT: ECE  
 DRAWN BY: VW

CADD FILE NAME:  
 20-127

THIS DRAWING AND THE DESIGN SHOWN ARE THE PROPERTY OF SAFF'S EXPRESS CAR WASH, LLC. THE REPRODUCTION OR USE OF THIS DRAWING WITHOUT THEIR WRITTEN CONSENT IS PROHIBITED. ANY INFRAVIOLATION IS SUBJECT TO LEGAL ACTION.  
 Sheet

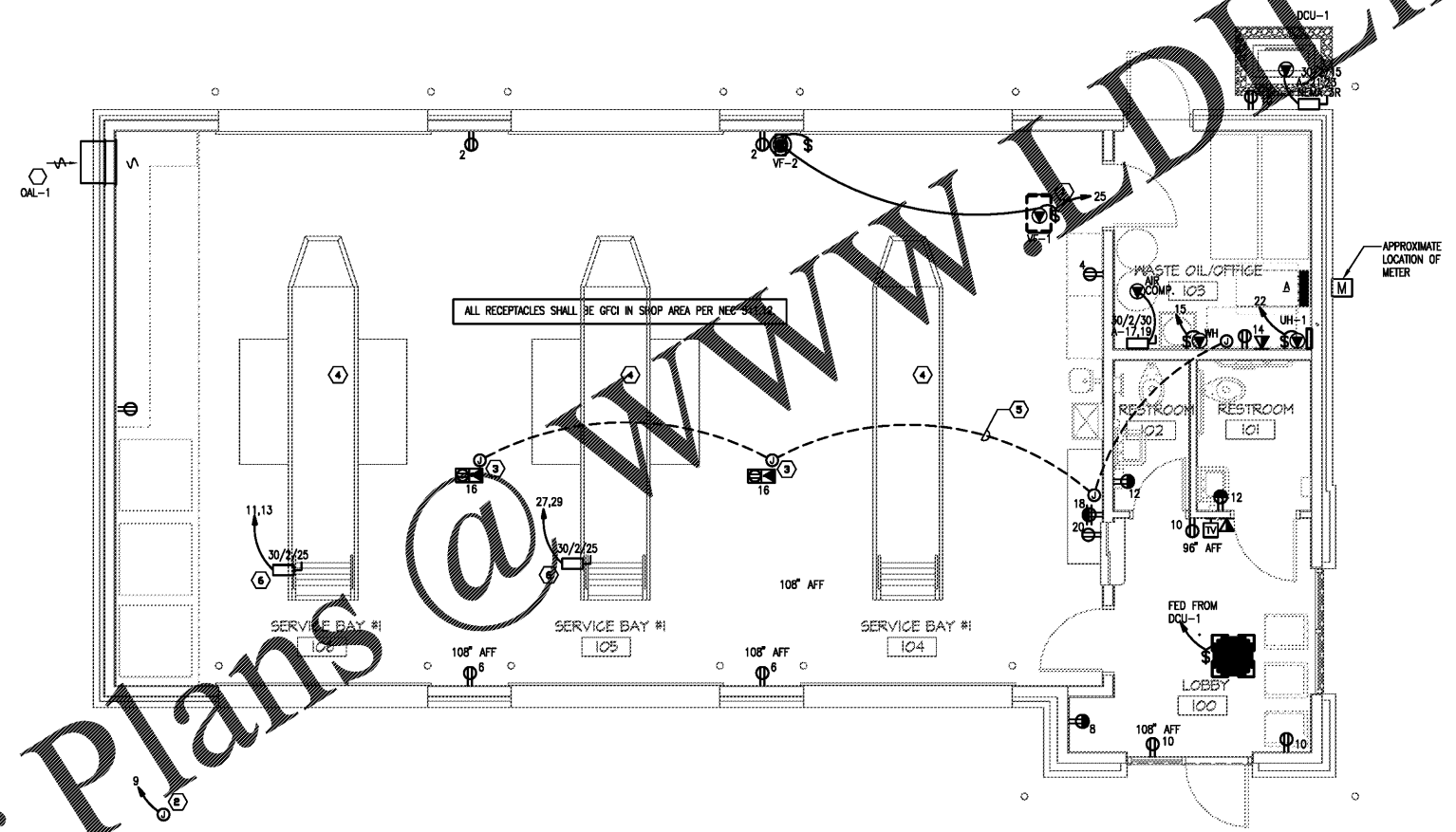
E2.0

GENERAL NOTES:

- A. FOR BATHROOMS, USE 3-POLAR AND UNIVERSAL SERIES MANUATED LED SWITCH.
- B. ALL EXTERIOR LIGHTS SHALL BE CONNECTED TO NEAREST CIRCUIT AREA OF SWITCHING.
- C. ALL EXTERIOR LIGHTING SHALL BE MONITORED BY TIMECLOCK 'ON' AND TIMECLOCK 'OFF'.

NEW NOTES:

- ① PROVIDE 2-CIRCUIT, 7-DAY ASTRONOMICAL DIGITAL TIMECLOCK (INTERMATIC ET8000 SERIES) FOR CONTROL OF VF-1/VF-2 AND MONUMENTAL SIGN. PROGRAM ONE CIRCUIT TO TURN VF-1 ON WHEN BUILDING IS OCCUPIED UNTIL ONE HOUR AFTER BUILDING IS UNOCCUPIED. PROGRAM OTHER CIRCUIT TO CONTROL MONUMENTAL SIGN PER OWNER'S DIRECTION.
- ② COORDINATE CONNECTION REQUIREMENTS FOR MONUMENT LIGHT AND LOCATION WITH EQUIPMENT PROVIDED. COORDINATE EXACT LOCATION WITH CIVIL DRAWINGS.
- ③ FOR COMPUTER PEDESTAL EQUIPMENT, CENTERED BETWEEN PITS. PROVIDE (2) FS BOXES ON 3/4" GRC CONDUITS STUBBED UP 6" ABOVE FLOOR. PROVIDE GFCI QUAD RECEPTACLE IN ONE BOX AND COVERPLATE WITH GROMMETTED OPENING FOR DATA WIRING IN THE OTHER BOX. COORDINATE LOCATION AND EXACT REQUIREMENTS WITH OWNER AND WITH THE EQUIPMENT PROVIDED.
- ④ PIT IS MECHANICALLY VENTILATED BY FAN VF-2 PER NEC 511.3(C), RESULTING IN UNCLASSIFIED DESIGNATION.
- ⑤ GC TO PROVIDE UNDER SLAB CONDUITS FOR CAT5 LOW VOLTAGE CABLING. COORDINATE EXACT LOCATION OF JUNCTION BOXES WITH OWNER PRIOR TO ROUGH-IN.
- ⑥ EC SHALL COORDINATE ALL ELECTRICAL REQUIREMENTS AND CONNECTIONS FOR THE LIFTS WITH LIFT INSTALLER.



1 ELECTRICAL PLAN  
 E2.0 1/4"=1'-0"

\*GC TO PROVIDE LOW VOLTAGE CABLING FOR OWNERS FF&E ITEMS. GC TO RECEIVE AND INSTALL OWNERS FF&E ITEMS PER LATEST OWNERS FF&E MANUAL. CONTACT MARK AGAN-VP OF OPERATIONS & FRANCHISING AT 336-995-8510 AND COORDINATE FINAL LOCATION OF OWNERS FF&E ITEMS.

THE GARAGE AREA IS DEFINED AS A MINOR REPAIR GARAGE PER 2017 NEC 511.2. NO VEHICLES USING LIGHTER-THAN-AIR GASEOUS FUELS WILL BE STORED OR REPAIRED.

Order Plans

WWW.IDLine.com

Z:\Users\Ryan\AppData\local\temp\AcPublish\_49448\Electrical.dwg, Plotted By: Ryan, Plotted: Jun 09, 2020 - 8:36am



1401 CENTRAL AVE., SUITE 200-J CHARLOTTE, NC 28205  
 704.266.0942  
 CERTIFICATE NO. P1340