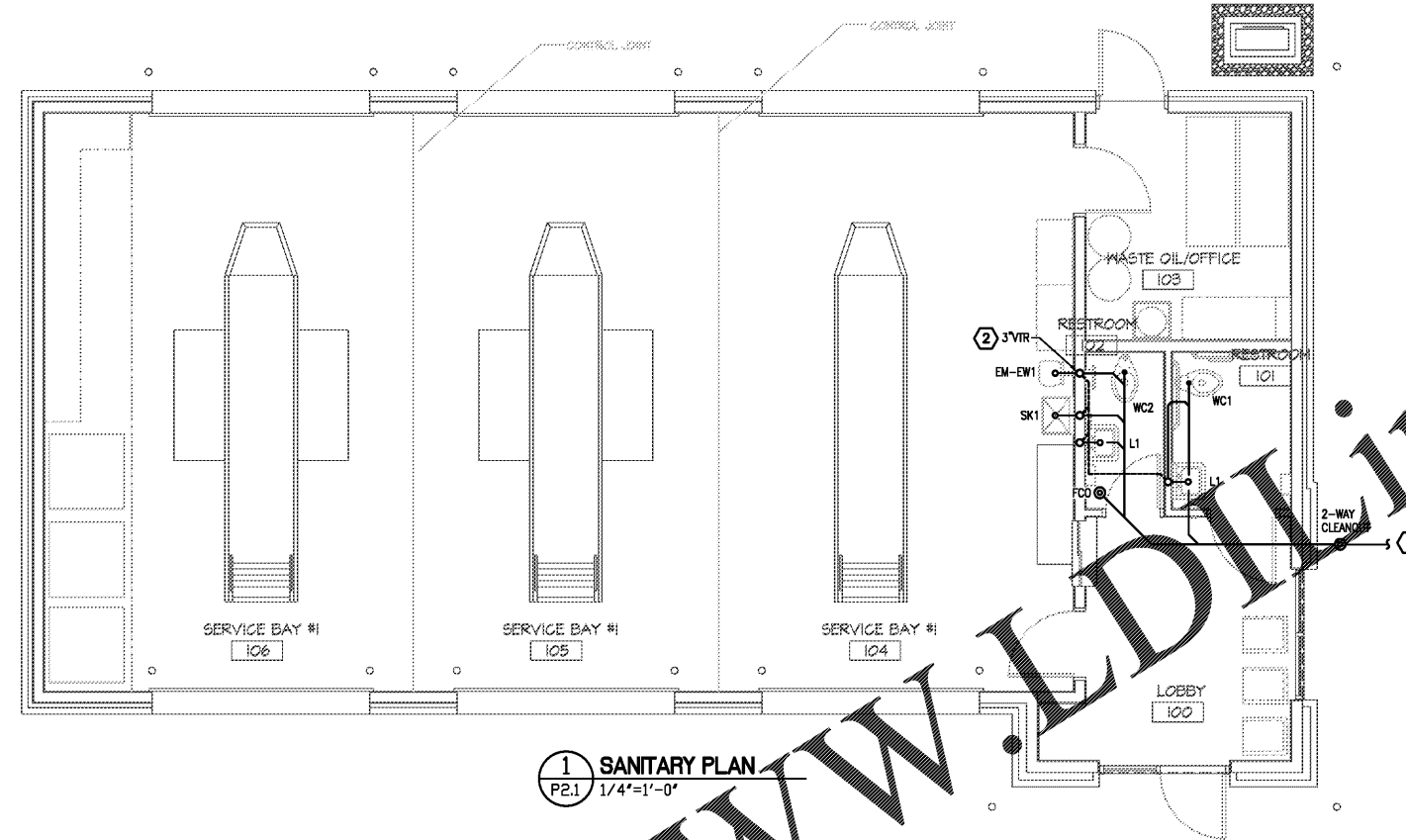
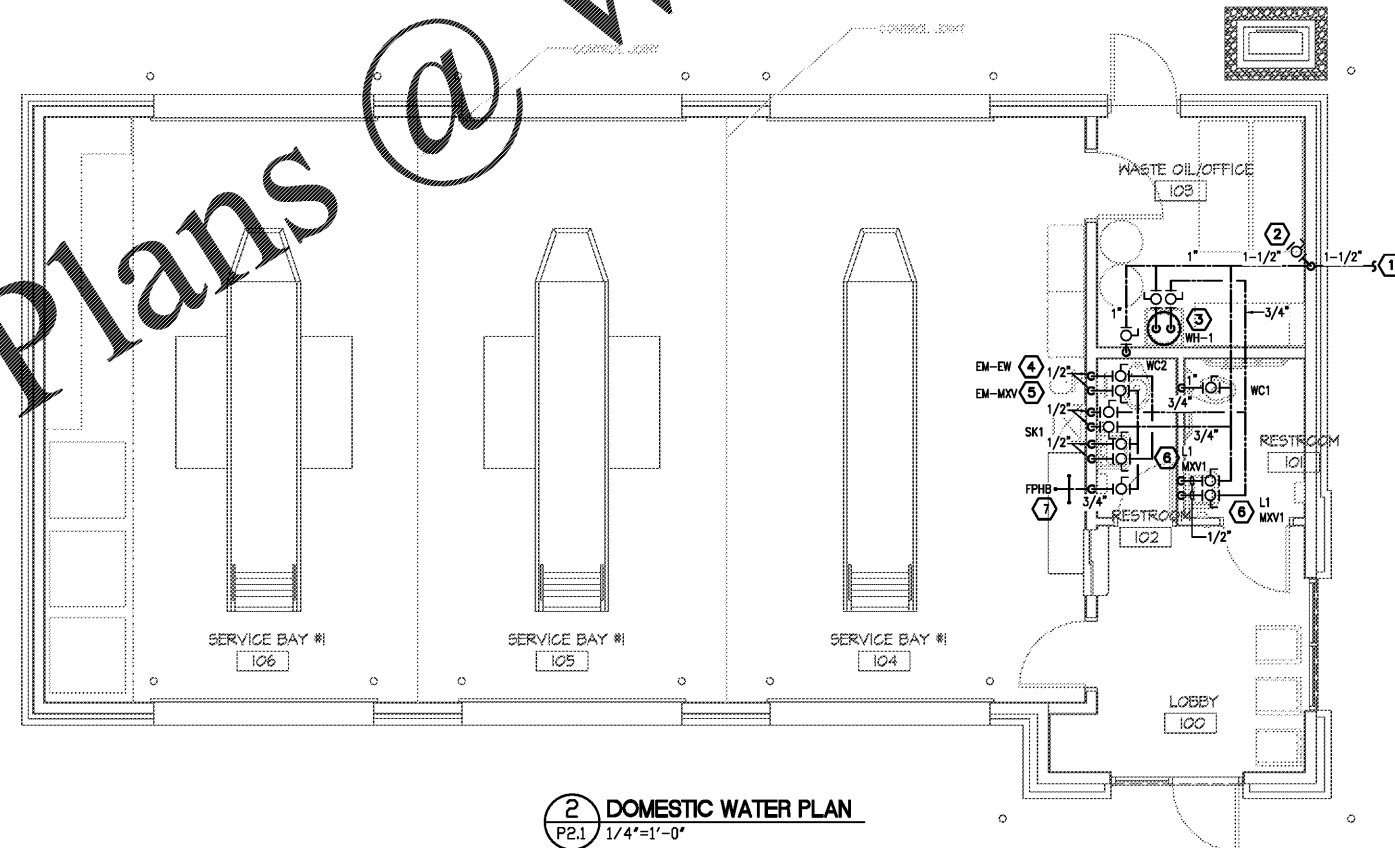


THE ARCHITECT/ENGINEER DOES NOT DEFINE THE SCOPE OF INDIVIDUAL TRADES, SUBCONTRACTORS, MATERIAL SUPPLIERS, OR VENDORS. ANY SHEET NUMBERING SYSTEM USED WHICH IDENTIFIES DISCIPLINES IS SOLELY TO SEPARATE ARCHITECT'S AND ENGINEER'S SCOPE. IT DOES NOT DEFINE A SUBCONTRACTOR'S SCOPE OF WORK. ANY DISCREPANCIES BETWEEN DRAWINGS, SPECIFICATIONS, CODES OR CONSTRUCTION SEQUENCING SHALL BE BROUGHT TO THE ATTENTION OF THE ARCHITECT PRIOR TO PROCEEDING. NO CONSIDERATION WILL BE GIVEN TO REQUESTS FOR CHANGE ORDERS FOR FAILURE TO OBTAIN AND REVIEW THE COMPLETE SET OF CONSTRUCTION DOCUMENTS, OR FOR FAILURE TO SEEK INTERPRETATION FROM ARCHITECT FOR DISCREPANCIES.



1 SANITARY PLAN
P2.1 1/4"=1'-0"

- KEY NOTES 1/P2.1
- NEW 4" SAN MAIN EXTENDED OUT TO 5'-0" BEYOND WALL. CONTINUATION TO MAIN SEWER BY G.C. REFER TO CIVIL DRAWINGS. THE FOOTING AT THIS LOCATION IS STEPPED DOWN TO -24" BFF. COORDINATE DURING INSTALLATION TO BE AT THIS LOWERED FOOTING. REFER TO STRUCTURAL FOUNDATION PLAN.
 - EXTEND 3" V THROUGH ROOF. PROVIDE PIPE ROOT AND COORDINATE WITH ROOFING SUBCONTRACTOR TO FLASH AND SEAL PENETRATION.



2 DOMESTIC WATER PLAN
P2.1 1/4"=1'-0"

- KEY NOTES 2/P2.1
- NEW 1 1/2" CW UNDERGROUND MAIN FROM CITY WATER SUPPLY. METER AND BACKFLOW PREVENTER PROVIDED BY G.C. AND SHOWN ON CIVIL SITE DRAWINGS. P.C. SHALL CONNECT TO WATER LINE AT 5'-0" OUTSIDE BUILDING.
 - TURN UP 1 1/2" CW INTO EXTERIOR WALL AT 8" AFF. PROVIDE PRV AND MAIN SHUT OFF VALVE. PROVIDE ACCESS PANEL IN WALL AND LABEL AS "MAIN WATER VALVE". CONTINUE PIPING UP TO ABOVE CEILING. ALL WATER PIPING SHALL BE INSTALLED ON THE INTERIOR SIDE OF THE EXTERIOR WALL INSULATION.
 - 10-GALLON WATER HEATER, IN DRAIN PAN, MOUNTED ON APPROVED WATER HEATER WALL SHELF. PROVIDE COMPLETE WITH SERVICE VALVES, VACUUM BREAKER AND EXPANSION TANK. SET OUTLET TEMP TO 120°F. INSTALL WITH SHELF AT 84" AFF MINIMUM. ROUTE HEATER T&P AND DRAIN PAN DISCHARGE TO SERVICE SINK (SK1) AND TERMINATE 3" ABOVE SINK RIM. ATTACH PIPE TO WALL BEHIND SINK.
 - WALL MOUNTED EMERGENCY EYE WASH. INSTALL AT MANUFACTURERS RECOMMENDED HEIGHT.
 - EMERGENCY FIXTURE THERMOSTATIC MIXING VALVE LOCATED INSIDE VALVE BOX ON WALL. ROUTE 1/2" CW & 1/2" HW TO MIXING VALVE, THEN EXTEND 1/2" TW (TEPID WATER 75°F) TO FIXTURE.
 - AT PUBLIC HANDWASHING LAVATORY, PROVIDE ASSE 1070 APPROVED POINT OF USE MIXING VALVE. SET VALVE OUTLET TEMP TO 110°F.
 - PC SHALL COORDINATE EXACT LOCATION OF HOSE BIBB WITH OWNER.



STRICKLAND BROTHERS
10 MINUTE OIL CHANGE
810 SOUTH MAIN STREET
GRAHAM, NC



Sanitary and Domestic Water Plans

ISSUE DATE: 6/5/20
REVISION 1: _____
REVISION 2: _____
REVISION 3: _____
REVISION 4: _____
PROJECT #: 20-127
CONTENT: _____

PROJECT ARCHITECT: ECE
DRAWN BY: VW
CADD FILE NAME: 20-127

THIS DRAWING AND THE DESIGN SHOWN ARE THE PROPERTY OF SAFF'S EXPRESS CAR WASH, LLC. THE REPRODUCTION, OR USE OF THIS DRAWING WITHOUT THEIR WRITTEN CONSENT IS PROHIBITED. ANY INFRINGEMENT IS SUBJECT TO LEGAL ACTION.
Sheet

P2.1

ENGINEERING SOLUTIONS
1401 CENTRAL AVE, SUITE 200-J CHARLOTTE, NC 28205
704.266.0942
CERTIFICATE NO. P1340

Order Plans @ WWW.LDILine.com

C:\Users\Ryan\AppData\Local\Temp\AcPublish_4948\Plumbing.dwg, Plotted By: Ryan, Plotted: Jun 09, 2020 - 8:37am