

THE ARCHITECT/ENGINEER DOES NOT DEFINE THE SCOPE OF INDIVIDUAL TRADES, SUBCONTRACTORS, MATERIAL SUPPLIERS, OR VENDORS. ANY SHEET NUMBERING SYSTEM USED WHICH IDENTIFIES DISCIPLINES IS SOLELY TO SEPARATE ARCHITECT'S AND ENGINEER'S SCOPE. IT DOES NOT DEFINE A SUBCONTRACTOR'S SCOPE OF WORK. ANY DISCREPANCIES BETWEEN DRAWINGS, SPECIFICATIONS, CODES OR CONSTRUCTION SEQUENCING SHALL BE BROUGHT TO THE ATTENTION OF THE ARCHITECT PRIOR TO PROCEEDING. NO CONSIDERATION WILL BE GIVEN TO REQUESTS FOR CHANGE ORDERS FOR FAILURE TO OBTAIN AND REVIEW THE COMPLETE SET OF CONSTRUCTION DOCUMENTS, OR FOR FAILURE TO SEEK INTERPRETATION FROM ARCHITECT FOR DISCREPANCIES.

PLUMBING FIXTURE SCHEDULE										
PLAN ID	MANUFACTURER	MODEL	SIZE	MATERIAL	FAUCET OR FLUSH VALVE	ROUGH-IN SCHEDULE				REMARKS
						SAN	VENT	CW	HW	
WC1	ZURN	Z5665-BWL	ELONGATED 17" H 10" ROUGH-IN	VITREOUS CHINA	ZURN Z6000-WS1-YJ	4"	2"	1/2"	N/A	FLOOR MOUNTED ELONGATED TANK TYPE WATER CLOSET. OPEN ELONGATED SEAT WITH SELF SUSTAINING CHECK HINGE, CLOSET BOLT AND WAX RING KIT. MANUAL 1.6 GPF FLUSH VALVE WITH SPLIT RING PIPE SUPPORT. TRIP LEVER HANDLE SHALL BE ON THE WIDE SIDE OF THE TOILET STALL. (ADA COMPLIANT).
WC2	ZURN	Z5655-BWL	ELONGATED 15" H 10" ROUGH-IN	VITREOUS CHINA	ZURN Z6000-WS1	4"	2"	1/2"	N/A	FLOOR MOUNTED ELONGATED TANK TYPE WATER CLOSET. OPEN ELONGATED SEAT WITH SELF SUSTAINING CHECK HINGE, CLOSET BOLT AND WAX RING KIT. MANUAL 1.6 GPF FLUSH VALVE WITH SPLIT RING PIPE SUPPORT. INSTALL TRIP LEVER HANDLE ON SAME SIDE OF FIXTURE AS ADA TOILET ADJACENT. (STANDARD HEIGHT)
L1	ZURN	Z5340	20"x18"x6-5/8"	VITREOUS CHINA	ZURN Z81101-XL-G-HCT-3M	2"	2"	1/2"	1/2"	WALL HUNG LAVATORY WITH MANUAL TWO HANDLE FAUCET FAUCET ON 4" CENTERS AND OPEN GRID STRAINER. PROVIDE WITH 0.5 GPM AERATOR. PROVIDE WITH WALL CARRIER AND SCALD GUARD COVERS ON TRAP AND SUPPLY LINES. HOT AND COLD FAUCET INDEXES AND STOP AND SUPPLY PROTECTORS. (ADA COMPLIANT).
SK1	FIAT	FL-1	20-1/4"x17-1/4"x13"	MOLDED PLASTIC	FIAT A-1	2"	2"	1/2"	1/2"	FLOOR MOUNTED LAUNDRY TUB SINK. PROVIDE COMPLETE WITH SWIVEL GOOSENECK FAUCET ON 4" CENTERS. BOLT SINK TO FLOOR THROUGH LEGS.
FPHB	WOODFORD	25	N/A	BRASS	N/A	N/A	N/A	3/4"	N/A	FREEZE PROOF, AUTOMATIC DRAINING WALL FAUCET WITH WHEEL HANDLE OPERATION AND 3/4" MALE HOSE THREAD NOZZLE. INSTALL AT 18" AFF.
MXV1	LAWLER	TMM-1070	N/A	BRONZE	N/A	N/A	N/A	N/A	1/2"	MECHANICAL POINT OF USE MIXING VALVE WITH 120 DEG F CUT-OFF LIMIT. SET OUTLET TO 110 DEG F.
EM-EW1	BRADLEY	S19224B	N/A	STEEL BODY WITH STAINLESS STEEL BOWL	N/A	N/A	N/A	N/A	1/2" TEPID	ANSI Z358.1 COMPLIANT, ADA COMPLIANT WALL MOUNTED EMERGENCY EYE WASH STATION. MOUNT WITH BOTTOM OF BOWL AT 27-1/4" AFG. PROVIDE WITH ALL HARDWARE TO MOUNT TO WALL AND ROUGH IN THE WATER LINES. FIXTURE TO DRAIN TO SANITARY SEWER IN WALL. PADDLE ACTIVATED WATER FLOW WITH ANSI REQUIRED FLOW RATE. PROVIDE COMPLETE WITH MIXING VALVE (EM-MXV).
EM-MXV	BRADLEY	S19-2000 EFX8-R-B-SE	N/A	BRASS	N/A	N/A	N/A	1/2"	1/2"	THERMOSTATIC MIXING VALVE FOR EMERGENCY FIXTURES MATCH EYE WASH STATION. PROVIDE COMPLETE WITH SURFACE MOUNTED BOX FOR THE WALL.

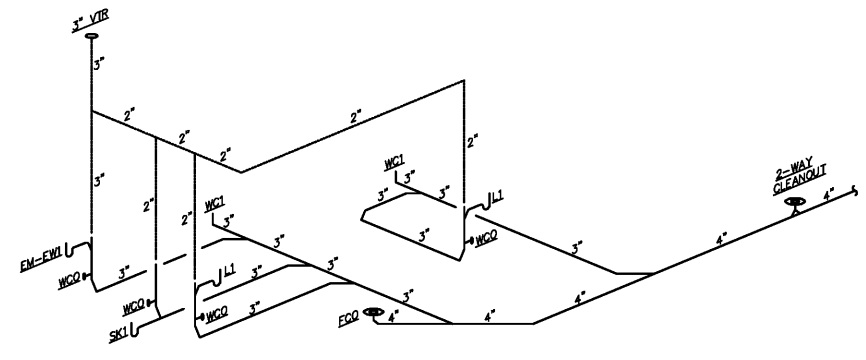
EQUIPMENT & MATERIALS LIST	
THE FOLLOWING EQUIPMENT AND MATERIALS ARE REQUIRED FOR THE OPERATION OF THIS FACILITY AND ARE TO BE PURCHASED BY THE OWNER AND INSTALLED BY THE PLUMBING CONTRACTOR.	
THE PLUMBING CONTRACTOR SHOULD REFERENCE THE PROJECT FF&E (FURNISHES, FINISHES & EQUIPMENT) MANUAL FOR EQUIPMENT LIST. ALL PART NUMBERS LISTED BELOW CORRESPOND TO THE FF&E MANUAL.	
(A)	WASTE OIL PUMP: GCO-647016
(B)	WASHER FLUID PUMP: GCO-647016
(C)	ANTI-FREEZE PUMP: GCO-647016
(D)	AIR COMPRESSOR: VT-735-80-1-B
(E)	ROLLING OIL TANKS: E203-30
(F)	OIL SPASH GUARD: DG203
(G)	WASHER FLUID NOZZLES: GCO-180685
(H)	ANTI-FREEZE NOZZLES: GCO-180685
(J)	FLEXIBLE WASTE OIL LINES: LISTED UNDER "MISC ITEMS". P.C. TO SPECIFY LENGTH REQUIRED PRIOR TO ORDERING.
(K)	LOW RISE LIFT: BL-BLAZER 9000
(L)	FLEXIBLE WASHER FLUID HOSE: A-CH-4-25-PR14-25-A-B (GREEN)
(M)	FLEXIBLE ANTI-FREEZE HOSE: A-CH-4-25-PR14-25-A-C (GREEN)
(N)	FLEXIBLE GENERAL AIR HOSE: A-AC-4-25-PR14-25-A-50A-B

SHOCK ARRESTOR SCHEDULE		
P.D.I. SIZE	FIXTURE UNITS	MANUFACTURER OR EQUAL
SA'A	1 - 11	ZURN, SMITH, PPI, SIOUX-CHIEF
SA'B	12 - 32	.
SA'C	33 - 60	.
SA'D	61 - 113	.
SA'E	114 - 154	.
SA'F	155 - 330	.

LOCATE SHOCK ARRESTORS IN AN ACCESSIBLE LOCATION OR PROVIDE SIOUX-CHIEF SHOCK ARRESTORS ONLY.
 PROVIDE SHOCK ARRESTORS AS INDICATED PER SCHEDULE. MINIMUM. SHOCK ARRESTORS SHALL BE SAME SIZE AS PIPE INSTALLED.
WATER HAMMER ARRESTER REQUIREMENTS
 1. PROVIDE WATER HAMMER ARRESTERS CONFORMING TO PDI-WH201 OR ASSE 1010, INSTALLED PER MANUFACTURER'S SPECIFICATIONS, WHERE QUICK CLOSING VALVES UTILIZED. A QUICK CLOSING VALVE IS A VALVE OR FAUCET THAT CLOSURES INSTANTANEOUSLY WHEN RELEASED, OR THAT IS CONTROLLED BY MECHANICAL OR ELECTRICAL MEANS FOR FAST-ACTION CLOSING. REFER TO WATER HAMMER ARRESTER SCHEDULE.
 2. AS A MINIMUM, PROVIDE ONE WATER HAMMER ARRESTER FOR EACH BRANCH LINE TO EACH TOILET ROOM LESS THAN 20' IN LENGTH, LOCATED BETWEEN THE LAST TWO FIXTURES SERVED. FOR BRANCH LINES GREATER THAN 20' IN LENGTH, A SECOND WATER HAMMER ARRESTER IS REQUIRED.

ELECTRIC WATER HEATER SCHEDULE								
PLAN IDENTITY	MANUFACTURER	MODEL	STORAGE CAPACITY	RECOVERY @ 90° RISE	ELEMENTS		ELECTRICAL VOLTAGE	REMARKS
					WATTAGE	QUANTITY		
WH1	AO SMITH	PROMAX EJC-10	10 GAL	8	1650	1	120/1	TANK TYPE ELECTRIC WATER HEATER. ELEMENT WATTAGE SHALL BE RATED AT THE INDICATED VOLTAGE. COORDINATE ELECTRICAL WITH E.C. PROVIDE DRAIN PAN UNDER HEATER. DRAIN T&P TO DRAIN PAN ROUTE DRAIN PAN DISCHARGE PER PLANS. PROVIDE WALL MOUNTED SUPPORT SHELF WITH INTEGRAL DRAIN PAN SIMILAR TO "HOLDRITE 40-SWHP-W". PROVIDE COMPLETE WITH DRAIN PAN TANK. SET HEATER OUTLET TO 120 DEG F.

PLUMBING DRAIN SCHEDULE					
PLAN ID	MANUFACTURER	MODEL	TOP SIZE	CONNECTION SIZE	REMARKS
FCO	ZURN	C02451-VP	5.25	4"	PVC CLEANOUT, ABOVE GROUND, SCHEDULE 40, ROOF SECURED TOP.



SANITARY ISOMETRIC

Order Plans @ www.lidill.com

C:\Users\Ryan\AppData\Local\Temp\AcPublish_4948\Plumbing.dwg, Plotted By: Ryan, Plotted: Jun 09, 2020 - 8:37am



STRICKLAND BROTHERS
 10 MINUTE OIL CHANGE
 810 SOUTH MAIN STREET
 GRAHAM, NC



PLUMBING SCHEDULES

ISSUE DATE: 6/5/20
 REVISION 1:
 REVISION 2:
 REVISION 3:
 REVISION 4:
 PROJECT #: 20-127
 CONTENT:

PROJECT ARCHITECT: ECE
 DRAWN BY: VW
 CADD FILE NAME: 20-127



1401 CENTRAL AVE, SUITE 200-J CHARLOTTE, NC 28205
 704.266.0942
 CERTIFICATE NO. P1340

THIS DRAWING AND THE DESIGN SHOWN ARE THE PROPERTY OF SAFF'S EXPRESS CAR WASH, LLC. THE REPRODUCTION, OR USE OF THIS DRAWING WITHOUT THEIR WRITTEN CONSENT IS PROHIBITED. ANY INFRINGEMENT IS SUBJECT TO LEGAL ACTION.
 Sheet

P0.2