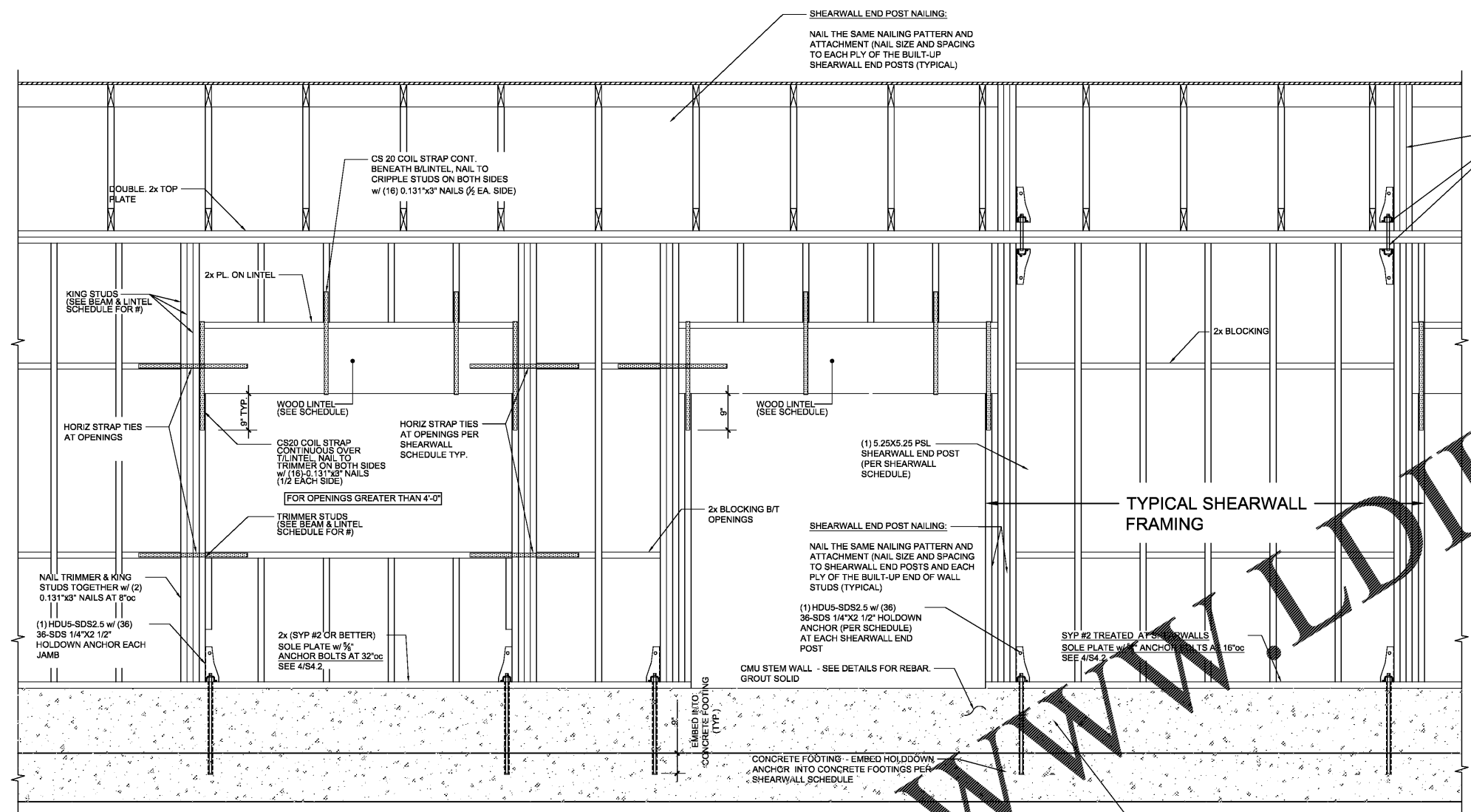


THE ARCHITECT/ENGINEER DOES NOT DEFINE THE SCOPE OF INDIVIDUAL TRADES, SUBCONTRACTORS, MATERIAL SUPPLIERS, OR VENDORS. ANY SHEET NUMBERING SYSTEM USED WHICH IDENTIFIES DISCIPLINES IS SOLELY TO SEPARATE ARCHITECTS AND ENGINEERS' SCOPE. IT DOES NOT DEFINE A SUBCONTRACTOR'S SCOPE OF WORK. ANY DISCREPANCIES BETWEEN DRAWINGS, SPECIFICATIONS, CODES OR CONSTRUCTION SEQUENCING SHALL BE BROUGHT TO THE ATTENTION OF THE ARCHITECT PRIOR TO PROCEEDING. NO CONSIDERATION WILL BE GIVEN TO REQUESTS FOR CHANGE ORDERS FOR FAILURE TO OBTAIN AND REVIEW THE COMPLETE SET OF CONSTRUCTION DOCUMENTS, OR FOR FAILURE TO SEEK INTERPRETATION FROM ARCHITECT FOR DISCREPANCIES.



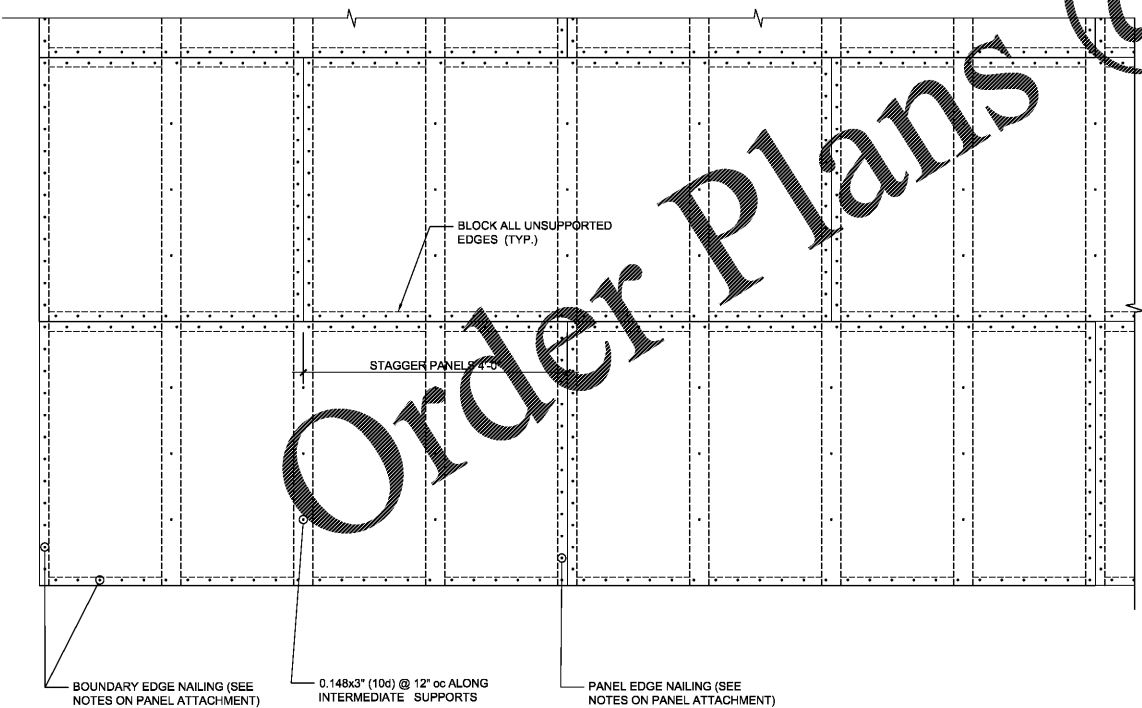
PROVIDE THE SAME NUMBER OF END POST AS CALLED FOR IN THE SHEARWALL SCHEDULE FROM TOP PLATE TO ROOF SHEATHING.

PROVIDE SAME HOLDDOWN ANCHOR AS CALLED FOR IN THE SHEARWALL SCHEDULE (EA. END)

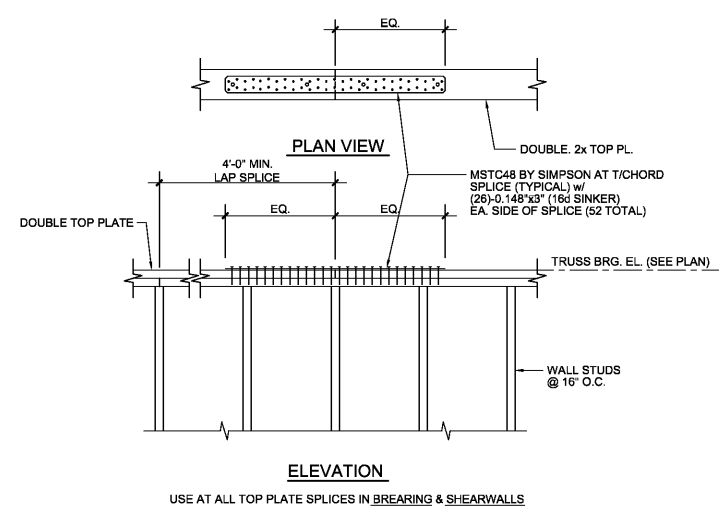
TYPICAL SHEARWALL NOTES:

1. ALL DIMENSIONED LUMBER SHALL BE SYP No. 2 OR BETTER
 2. SEE GENERAL NOTES FOR WALL SHEATHING.
 3. BLOCK ALL PANEL EDGES w/ 2x BLOCKING
 4. FASTENERS SHALL BE 0.148"x3" MIN. GALV. NAILS (TYPICAL U.N.O.), NAIL SHEATHING TO STUDS AND BLOCKING AS SPECIFIED IN SHEARWALL ELEVATION.
 5. END POSTS SHALL BE NAILED TOGETHER w/ (2) 0.162"x3 1/2" GALV. NAILS AT 8" OC. NAIL SHEATHING TO EACH PLY OF EACH END POSTS AT SAME SPACING AS PANEL EDGES.
- SHEARWALL END POST NAILING:**
- NAIL THE SAME NAILING PATTERN AND ATTACHMENT (NAIL SIZE AND SPACING TO EACH PLY OF THE BUILT-UP SHEARWALL END POSTS (TYPICAL))
6. PROVIDE HOLD DOWN AT EACH END POST AS SPECIFIED IN SHEARWALL DESCRIPTION, INSTALL PER MANUFACTURER'S INSTRUCTIONS AND RECOMMENDATIONS.
 7. PROVIDE ASTM A36 ANCHOR RODS AT EA. HOLD DOWN, EMBED 15" MIN. w/ DOUBLE NUT AND WASHER INTO CONCRETE FOOTING. PROVIDE NUT AND WASHER AT HOLD DOWN, EXCAVATE FTG. AS REQ'D TO MAINTAIN 3" COVER BELOW A.B.
 8. COORDINATE ALL OPENING LOCATIONS AND DIMENSIONS WITH ARCHITECTURAL DRAWINGS.
 9. NO PENETRATIONS OR OPENINGS ARE PERMITTED IN SHEARWALLS.

1 TYPICAL DETAIL AT WALL OPENINGS/SHEARWALLS - USE IN CONJUNCTION WITH 2/S4.1
S-4.1 NOT TO SCALE



3 TYPICAL - ROOF SHEATHING PLAN VIEW
S-4.1 NOT TO SCALE



5 TYPICAL TOP PLATE SPLICE DETAIL
S-4.1 3/4" = 1'-0"

ED

ARCHITECTS & ENGINEERS

401 Pioneer Street, Suite 200, Charlotte, NC 28203
Phone: 704.375.1100
Fax: 704.375.1101

SEAL

18427

DEAN ARP

6/05/20

STRICKLAND BROTHERS
10 MINUTE OIL CHANGE
810 SOUTH MAIN STREET
GRAHAM, NC



ISSUE DATE: 6-05-2020

REVISION 1: _____

REVISION 2: _____

REVISION 3: _____

REVISION 4: _____

AEI PROJECT #: 20065

CONTENT: SHEARWALL TYPICAL DETAILS

ENGINEER OF RECORD: LDA

DRAWN BY: DS

ARP ENGINEERING
CONSULTING ENGINEERS

202 EAST FRANKLIN STREET, SUITE A
PO BOX 587 - MONROE - NC 28111
(704) 225-0079
NC COA C2424

Sheet
S-4.1