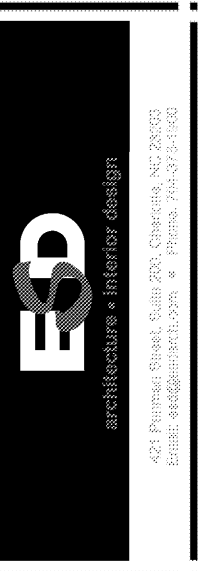
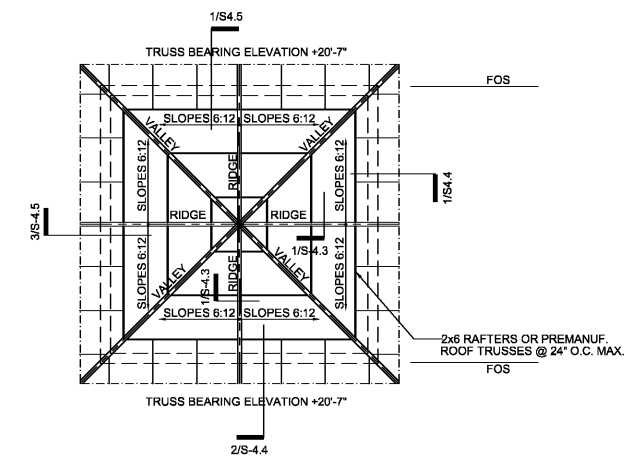
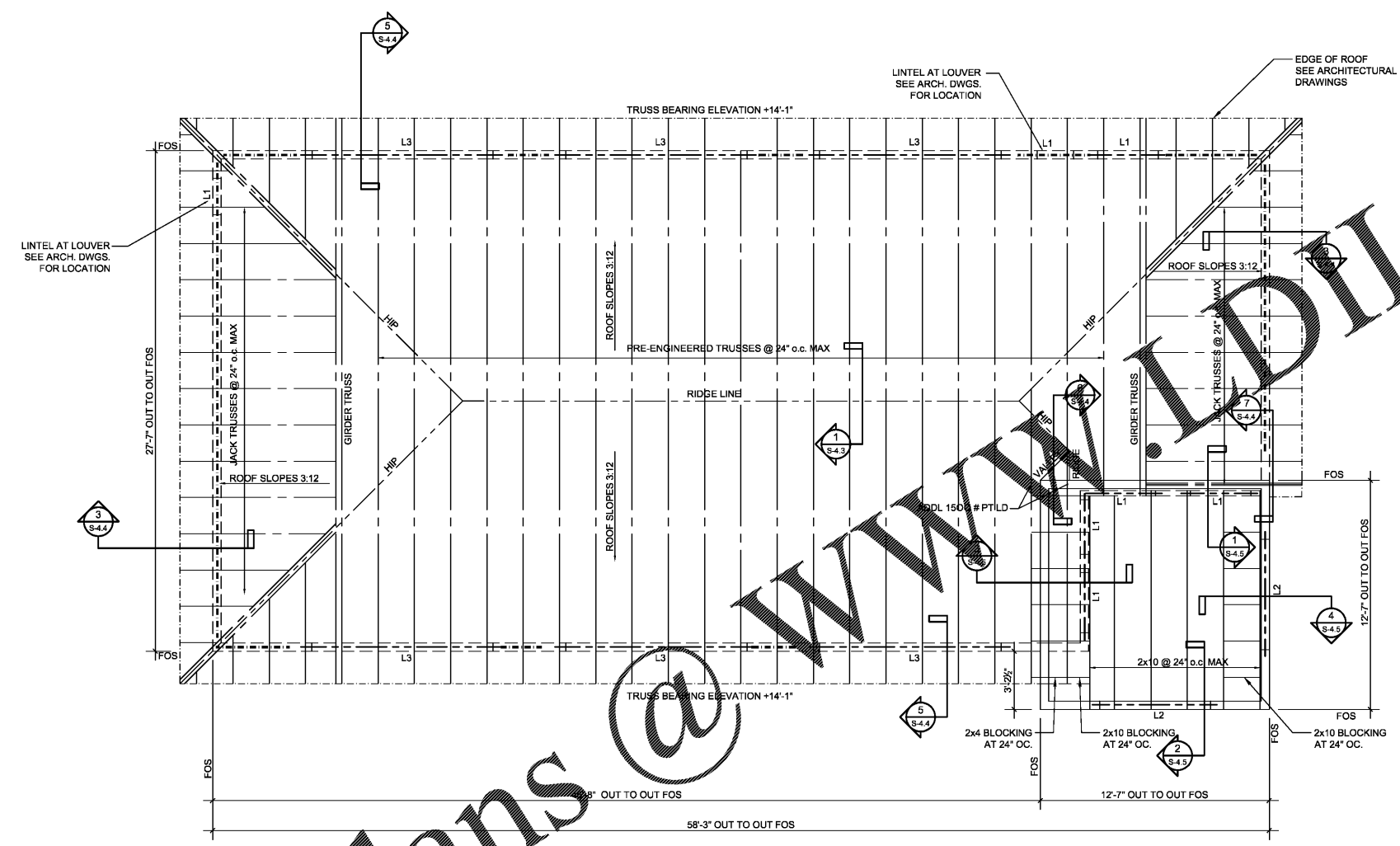


THE ARCHITECT/ENGINEER DOES NOT DEFINE THE SCOPE OF INDIVIDUAL TRADES, SUBCONTRACTORS, MATERIAL SUPPLIERS, OR VENDORS. ANY SHEET NUMBERING SYSTEM USED WHICH IDENTIFIES DISCIPLINES IS SOLELY TO SEPARATE ARCHITECTS AND ENGINEERS' SCOPE. IT DOES NOT DEFINE A SUBCONTRACTOR'S SCOPE OF WORK. ANY DISCREPANCIES BETWEEN DRAWINGS, SPECIFICATIONS, CODES OR CONSTRUCTION SEQUENCING SHALL BE BROUGHT TO THE ATTENTION OF THE ARCHITECT PRIOR TO PROCEEDING. NO CONSIDERATION WILL BE GIVEN TO REQUESTS FOR CHANGE ORDERS FOR FAILURE TO OBTAIN AND REVIEW THE COMPLETE SET OF CONSTRUCTION DOCUMENTS, OR FOR FAILURE TO SEEK INTERPRETATION FROM ARCHITECT FOR DISCREPANCIES.



STRICKLAND BROTHERS
10 MINUTE OIL CHANGE
810 SOUTH MAIN STREET
GRAHAM, NC



1 ROOF FRAMING PLAN
SCALE: 1/4"=1'-0"

2 HI ROOF FRAMING PLAN
SCALE: 1/4"=1'-0"

LINTEL SCHEDULE					
MARK	MAX. OPNG.	WALL CONSTRUCTION	LINTEL TYPE & DESCRIPTION	REMARKS	BEAR ON
L1	6'-0"	2x6 WALL STUDS	TYPE I - (3) 2x10's (8" STUD WALL) TYPE I - (2) 2x10's (4" STUD WALL)	INTERIOR EXTERIOR WALLS SYN NO. 2	1 TRIMMER W/2 KING STUDS
L2	8'-0"	2x6 WALL STUDS	TYPE I - (3) 2x10's (8" STUD WALL)	INTERIOR EXTERIOR WALLS SYN NO. 2	2 TRIMMER W/3 KING STUDS
L3	10'-1"	2x6 WALL STUDS	TYPE II - (3) 2x10's (8" STUD WALL) 1 1/2" x 11 1/2" LVL	INTERIOR EXTERIOR WALLS 1.9E Fb=2,600 PSI	3 TRIMMER W/4 KING STUDS

TYPE I

TYPE II

NOTES:
1. WIDTH OF OPENING ALONE, DOES NOT CONTROL LINTEL SIZE. ALL LINTEL SIZES SHALL BE AS NOTED ON THE PLANS. IF A LINTEL MARK IS MISSING ON THE PLANS, THE G.C. SHALL CONTACT ARP ENGINEERING, AND ASK FOR THE APPROPRIATE LINTEL MARK REQUIRED. SCHEDULE IS FOR REFERENCE ONLY.
2. SEE DETAIL 7/S-4.3 FOR MULTI-PLY INSTRUCTIONS.

ROOF FRAMING PLAN NOTES:

- ALL ELEVATIONS REFERENCED FROM FIN. FL. (0-0)
- TRUSS BEARING IS SHOWN ON THE PLANS.
- CONTRACT DRAWINGS SHALL NOT BE USED FOR SHOP DRAWINGS.
- SEE SHEET S-0.1 FOR GENERAL NOTES.
- ROOF SHEATHING IS APA RATED SHEATHING, EXPOSURE 1. SEE WOOD CONSTRUCTION NOTE 8 IN THE GENERAL NOTES FOR ATTACHMENT REQUIREMENTS
- SEE SHEET S-1.1 FOR BUILDING DIMENSIONS, COORDINATE WITH ARCHITECTURAL
- L* INDICATES LINTEL. SEE LINTEL SCHEDULE THIS SHEET.
- L* INDICATES SHEAR WALL. SEE SHEETS S-1.1 FOR SW SCHEDULE

MICROLAM HEADER NOTE:
PROVIDE (1) PIECES OF 1/2" PLYWOOD FILLER BETWEEN MICROLAM HEADER MEMBERS TO ACHIEVE 5 1/2" WALL THICKNESS. GLUE AND FASTEN MEMBERS W/ (3) ROWS OF 10d NAILS @ 12" OC. SEE S-4.1 FOR HEADER BEARING CONNECTION.

2X SAWN LUMBER HEADER:
PROVIDE (2) PIECES OF 1/2" PLYWOOD FILLER BETWEEN 2X HEADER MEMBERS TO ACHIEVE 5 1/2" WALL THICKNESS. FASTEN 2X MEMBERS W/ (2) ROWS OF 10d NAILS @ 12" OC. SEE 6/S-4.1 FOR HEADER BEARING CONNECTION.

2X SAWN LUMBER HEADER:
PROVIDE (1) PIECES OF 1/2" PLYWOOD FILLER BETWEEN 2X HEADER MEMBERS TO ACHIEVE 3 1/2" WALL THICKNESS. FASTEN 2X MEMBERS W/ (2) ROWS OF 10d NAILS @ 12" OC. SEE 6/S-4.1 FOR HEADER BEARING CONNECTION.

GANG STUD NOTE:
FASTEN GANGED 2X WALL STUDS W/ (1) ROW OF 10d NAILS @ 12" OC (TYP.)

BEAM & LINTEL NOTES FOR OPENINGS GREATER THAN 6'-4" :

- BEAR ON STUDS CALLED OUT IN SCHEDULE @ EA. END & PROVIDE FULL HT. STUDS PER SCHEDULE AT EA. END.
- PROVIDE CS16 STRAP TO BEARING STUDS AT EA. END OF LINTEL. RUN STRAP CONTINUOUS OVER TOP OF LINTEL WITH 16" MIN. OF END LENGTH ON BOTH SIDES OF THE STUD
- PROVIDE LTT19 ANCHOR AT BASE OF BEARING STUDS.

ROOF SHEATHING ATTACHMENT:

- ROOF SHEATHING AS SPECIFIED IN GENERAL NOTES.
- STAGGER END BUTT JOINTS OF PLYWOOD ROOF SHEATHING PANELS BY 4 FT.
- FASTENER TYPE: 8d COMMON NAILS (0.131x3" MIN. SHAFT DIA.)
- FASTENING PATTERN:
4" OC AT SUPPORTED PLYWOOD EDGES
12" OC ALONG EACH INTERMEDIATE SUPPORT OF EACH PLYWOOD PANEL
4" OC AT PERIMETER BLOCKING, DRAG STRUT TRUSSES, & SHEARWALLS

WOOD TRUSS BRACING NOTES:

- PROVIDE PERMANENT DIAGONAL 2 X 4 BRACING AT EACH END OF EACH GROUP OF TRUSSES IN THE PLANE OF EACH WEB MEMBER WHICH REQUIRES CONTINUOUS LATERAL BRACING BY TRUSS DESIGN. PROVIDE PERMANENT TOP CHORD AND BOTTOM CHORD LATERAL BRACING MEMBERS 2 X 4 S AT 10 FEET ON CENTER MAX. SPACING. SEE TRUSS DRAWINGS FOR BRACING DETAILS & LOCATIONS.
- PROVIDE PERMANENT 2 X 4 DIAGONAL BRACING ON BOTTOM CHORDS AT EACH END OF EACH GROUP OF TRUSSES.
- ATTACH ALL BRACING WITH TWO 16d NAILS AT EACH MEMBER. EACH BRACING MEMBER SHALL BE A MINIMUM OF 8' LONG AND SPAN A MINIMUM OF FOUR TRUSSES. LAP BRACING MEMBERS OVER AT LEAST TWO TRUSSES.

ISSUE DATE: 6-05-2020
REVISION 1: _____
REVISION 2: _____
REVISION 3: _____
REVISION 4: _____
AEI PROJECT #: 20065
CONTENT: ROOF FRAMING PLAN
ENGINEER OF RECORD: LDA
DRAWN BY: DS
Sheet
S-2.1

ARP ENGINEERING
CONSULTING ENGINEERS
202 EAST FRANKLIN STREET, SUITE A
PO BOX 587 - MONROE - NC 28111
(704) 225-0079
NC COA C2424