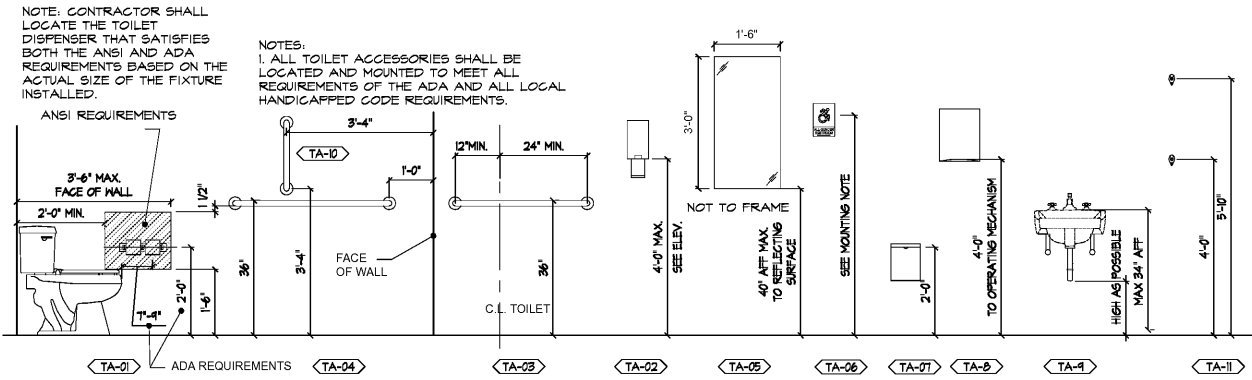
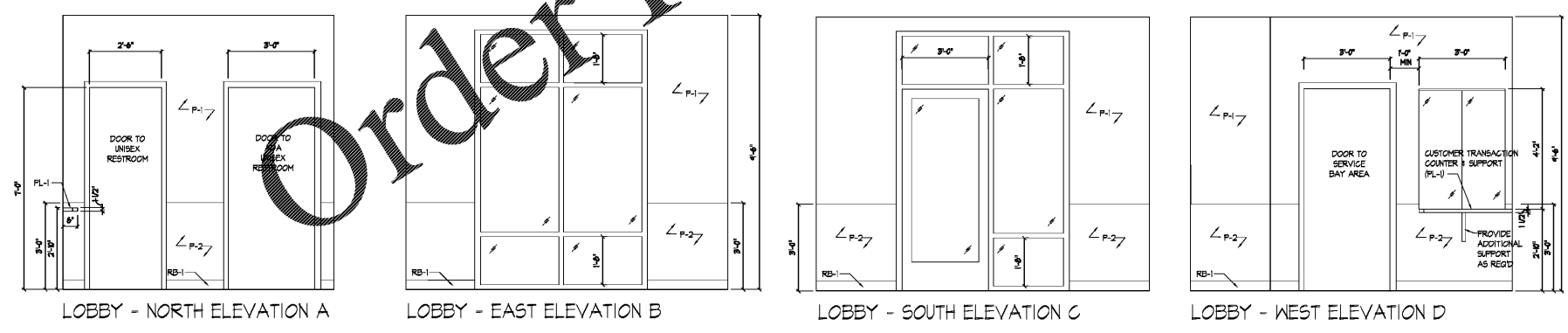


TOILET ACCESSORY NOTES:
 1. ALL TOILET ACCESSORIES SHALL BE LOCATED AND MOUNTED TO MEET ALL REQUIREMENTS OF THE ADA AND ALL LOCAL ACCESSIBILITY CODE REQUIREMENTS.
 2. MANUFACTURER NUMBERS REFERENCE BRADLEY MODEL NUMBERS AS BASIS OF DESIGN. U.N.O. OWNER TO SELECT FINAL ACCESSORIES.
 3. SIGN MOUNTING NOTE: TACTILE CHARACTERS ON SIGNS SHALL BE LOCATED 48 INCHES (1220 MM) MINIMUM ABOVE THE FINISH FLOOR OR GROUND SURFACE, MEASURED FROM THE BASELINE OF THE LOWEST TACTILE CHARACTER AND 60 INCHES (1525 MM) MAXIMUM ABOVE THE FINISH FLOOR OR GROUND SURFACE, MEASURED FROM THE BASELINE OF THE HIGHEST TACTILE CHARACTER. HEIGHT FROM FINISH FLOOR OR GROUND. VISUAL CHARACTERS SHALL BE 48 INCHES (105 MM) MINIMUM ABOVE THE FINISH FLOOR OR GROUND.

MARK	LOCATION	DESCRIPTION	MFR. / MODEL #	REMARKS
TA-01	RM. 102/103	SURFACE MTD TOILET PAPER DISPENSER	BRADLEY, MODEL 5425	DIMENSIONS ARE TO OPER. PARTS. *OWNER FURNISHED, GC INSTALL*
TA-02	RM. 102/103	SURFACE MOUNTED SOAP DISPENSER	BRADLEY, MODEL 655	DIMENSIONS ARE TO OPER. PARTS. *OWNER FURNISHED, GC INSTALL*
TA-03	RM. 103	36" GRAB BAR-W/ CONCEALED MOUNTING	BRADLEY, 812 SERIES	--
TA-04	RM. 103	42" GRAB BAR-W/ CONCEALED MOUNTING	BRADLEY, 812 SERIES	--
TA-05	RM. 102/103	18" X 36" UNFRAMED WALL MIRROR	BRADLEY, MODEL 141	*OWNER FURNISHED, GC INSTALL* SEE MOUNTING NOTE BELOW
TA-06	RM. 102/103	BRAILLE H.C. TOILET SIGN ALL GENDER	--	--
TA-07	RM. 102/103	SANITARY NAPKIN DISPOSAL	BRADLEY, MODEL 440-II	*OWNER FURNISHED, GC INSTALL*
TA-08	RM. 102/103	SURFACE MOUNT PAPER TOWEL DISPENSER	BRADLEY, MODEL 2A10-II	*OWNER FURNISHED, GC INSTALL*
TA-09	RM. 102/103	UNDER-LAVATORY GUARD	--	LAVATORY SUPPLY AND DRAIN PIPES
TA-10	RM. 103	18" VERTICAL GRAB BAR	BRADLEY, 812 SERIES	--
TA-11	RM. 102/103	SURFACE MOUNT COAT HOOK WITH BUMPER	BRADLEY, MODEL 415	CENTER HOOKS ON INTERIOR OF DOOR AT 48" AFF AND 10" AFF



4 TOILET ACCESSORIES
SCALE: N/A



3 LOBBY ELEVATIONS
SCALE: 3/8"=1'-0"

- TOILET ROOM CLEAR FLOOR NOTES:**
- (A) 30X48 CLEAR FLOOR AT LAV & EYE WASH & COUNTER
 - (B) 30X48 CLEAR FLOOR
 - (C) 60X56 CLEAR FLOOR AT TOILET
 - (D) 48X48 AT PUSH SIDE OF DOOR
 - (E) 54X60 AT FULL SIDE OF DOOR
 - (F) 60" TURNING RADIUS
 - (G) 36" X 48" AT PUSH SIDE OF DOOR WITHOUT CLOSER

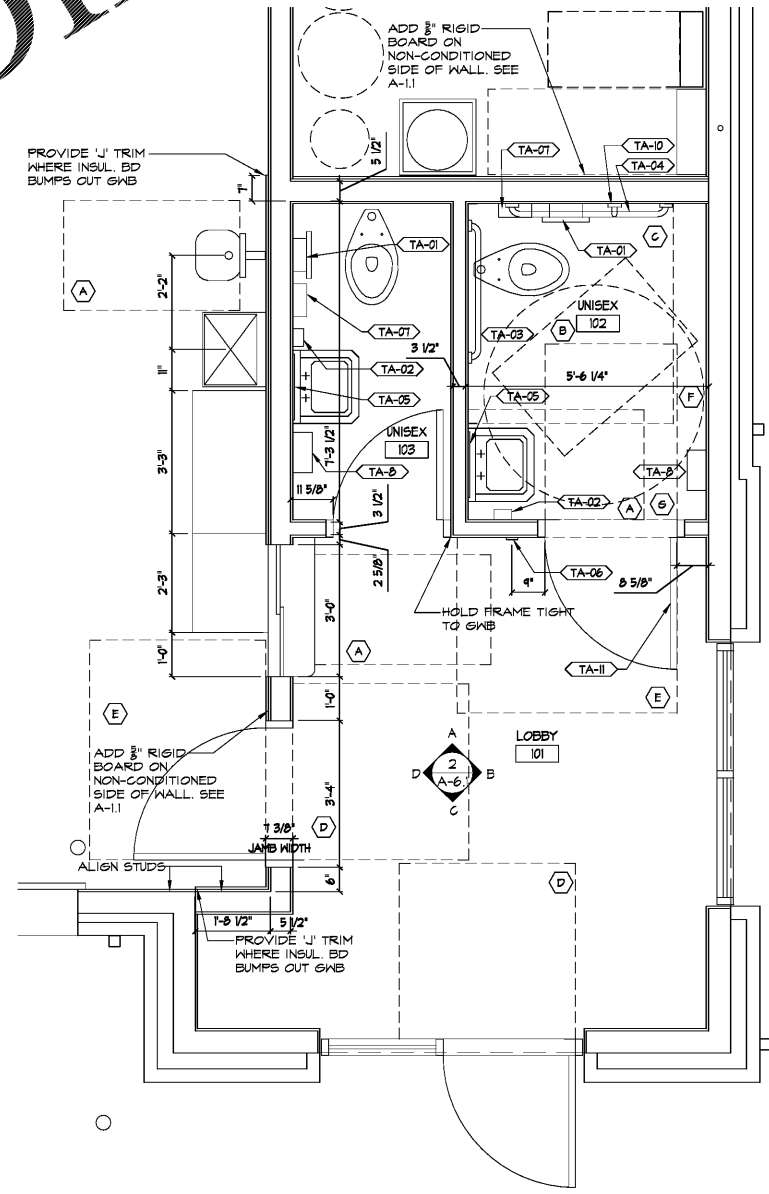
RM. NO.	ROOM	FLOOR	BASE	WALLS				CEILING	REMARKS
				NORTH	EAST	SOUTH	WEST		
101	LOBBY	LVY-1	RB-1	P-2 TO 36" AFF, P-1 ABOVE, TYP ALL LOBBY WALLS				ACT-1	
102	UNISEX RESTROOM	LVY-1	RB-1	P-4	P-4	P-4	P-4	ACT-1	
103	UNISEX RESTROOM	LVY-1	RB-1	P-4	P-4	P-4	P-4	ACT-1	
104	WASTE OIL/ OFFICE	CONC	RB-1	P-1	P-1	P-1	P-1	ACT-1	
105	SERVICE BAY #1	CONC	RB-1	P-1	P-1	P-1	P-1	GP-1	
106	SERVICE BAY #2	CONC	RB-1	P-1	P-1	P-1	P-1	GP-1	
107	SERVICE BAY #3	CONC	RB-1	P-1	P-1	P-1	P-1	GP-1	

THE ARCHITECT/ENGINEER DOES NOT DEFINE THE SCOPE OF INDIVIDUAL TRADES, SUBCONTRACTORS, MATERIAL SUPPLIERS, OR VENDORS. ANY SHEET NUMBERING SYSTEM USED WHICH IDENTIFIES DISCIPLINES IS SOLELY TO SEPARATE ARCHITECT'S AND ENGINEER'S SCOPE. IT DOES NOT DEFINE A SUBCONTRACTOR'S SCOPE OF WORK. ANY DISCREPANCIES BETWEEN DRAWINGS, SPECIFICATIONS, SCHEDULES, OR CONSTRUCTION SEQUENCING SHALL BE BROUGHT TO THE ATTENTION OF THE ARCHITECT PRIOR TO PROCEEDING. NO CONSIDERATION WILL BE GIVEN TO REQUESTS FOR CHANGE ORDERS FOR FAILURE TO OBTAIN AND REVIEW THE COMPLETE SET OF CONSTRUCTION DOCUMENTS, OR FOR FAILURE TO SEEK INTERPRETATION FROM ARCHITECT FOR DISCREPANCIES.

FINISH CODE	ITEM/DESCRIPTION	MANUFACTURER	STYLE	COLOR	SIZE/INSTALLATION	CONTACT
LVY-1	LUXURY VINYL TILE	MANNINGTON	ACCESS/STONE	CERAMIC FLINT-SX553566	11.7" X 17.7" X 5MM THICK	KEITH WALL (704) 488-1383 KEITH.WALL@MANNINGTON.COM
CONC	SEALED CONCRETE / DENSIFIER	ASHFORD OR EQUAL	NONSLIP	NATURAL	--	--
ST-1	STOREFRONT	SHERWIN WILLIAMS	PROGREEN 220 LVOC	SH6234 UNCERTAIN GRAY	--	RUSSELL HANSEN (980) 207-4410 RUSSELL.HANSEN@SHERWIN.COM
P-1	PAINT- GENERAL	SHERWIN WILLIAMS	PROGREEN 220 LVOC	SH144 INKY BLUE	--	RUSSELL HANSEN (980) 207-4410 RUSSELL.HANSEN@SHERWIN.COM
P-2	PAINT- ACCENT STRIPE	SHERWIN WILLIAMS	PROGREEN 220 LVOC	SH1074 SOFTWARE	--	RUSSELL HANSEN (980) 207-4410 RUSSELL.HANSEN@SHERWIN.COM
P-3	PAINT- ACCENT EXTERIOR	SHERWIN WILLIAMS	PROGREEN 220 LVOC	SH6234 UNCERTAIN GRAY	--	RUSSELL HANSEN (980) 207-4410 RUSSELL.HANSEN@SHERWIN.COM
P-4	PAINT- RESTROOM, DOORS & FRAMES	SHERWIN WILLIAMS	PRO INDUSTRIAL WATER-BASED CATALYZED EPOXY	SH6234 UNCERTAIN GRAY	--	RUSSELL HANSEN (980) 207-4410 RUSSELL.HANSEN@SHERWIN.COM
ACT-1	ACOUSTIC CEILING TILE	ARMSTRONG	TEGLAR EDGE LAY-IN	WHITE W/ WHITE GRID	24"X24"X5/8", W/ 15/16" GRID	ANGELA DANFORTH (704) 363-4979 ACDUNFH@ARMSTRONG.COM
CP-1	CEILING PAINT	SHERWIN WILLIAMS	PRO INDUSTRIAL WATER-BASED CATALYZED EPOXY	SK1071 CEILING BRIGHT WHITE	MATTE	RUSSELL HANSEN (980) 207-4410 RUSSELL.HANSEN@SHERWIN.COM
RB-1	RUBBER BASE	TARKETT	VINYL WALL BASE W/ TGE	20 CHARCOAL	4"	KIM KRIEGER (980) 240-4270
PL-1	PLASTIC LAMINATE	WILSONART	5604-31 TRACELESS FINISH	CHARCOAL VELVET	--	ALANEA KRIEGER (980) 240-4270 ALANEA.KRIEGER@WILSONART.COM

2 FINISH LEGEND & SCHEDULE
SCALE: N/A

- GENERAL NOTES:**
- MAXIMUM HEIGHT OF ANY FLOORING TRANSITION IS 1/2" (SLOPED) OR 1/4" (VERTICAL).
 - ANY FLOORING TRANSITIONS AT DOORWAYS ARE TO OCCUR AT THE CENTERLINE OF THE DOOR IN ITS CLOSED POSITION, TYPICAL.
 - PAINTED WOOD, IF APPLICABLE, SHALL BE POPLAR.
 - GYPSUM BOARD CEILINGS ARE TO BE PAINTED FLAT, EXCEPT RESTROOM CEILING, TO BE SEMI-GLOSS.
 - ALL TILE MORTAR AND GROUT IS TO RECEIVE A LATEX MIXTURE TO ENSURE RESISTANCE TO CHEMICAL DETERIORATION.
 - REFER TO SUBMITTALS SECTION OF THESE SPECIFICATIONS FOR ALL SAMPLE SUBMITTAL PROCEDURES.
 - FOLLOW ALL MANUFACTURER GUIDELINES FOR INSTALLATION.



1 ENLARGED RESTROOM AND LOBBY PLAN
SCALE: 1/2"=1'-0"



STRICKLAND BROTHERS
 10 MINUTE OIL CHANGE
 810 SOUTH MAIN STREET
 GRAHAM, NC



ISSUE DATE: 6/5/20
 REVISION 1: --
 REVISION 2: --
 REVISION 3: --
 REVISION 4: --
 PROJECT #: 20-127
 CONTENT: FINISH SCHEDULES

PROJECT ARCHITECT: ECE
 DRAWN BY: VW
 CADD FILE NAME: 20-127.CSDA461

THIS DRAWING AND THE DESIGN SHOWN ARE THE PROPERTY OF SAM'S EXPRESS CAR WASH, LLC. THE REPRODUCTION, OR USE OF THIS DRAWING WITHOUT THEIR WRITTEN CONSENT IS PROHIBITED. ANY INFRINGEMENT IS SUBJECT TO LEGAL ACTION.