

THE ARCHITECT/ENGINEER DOES NOT DEFINE THE SCOPE OF INDIVIDUAL TRADES, SUBCONTRACTORS, MATERIAL SUPPLIERS, OR VENDORS. ANY SHEET NUMBERING SYSTEM USED WHICH IDENTIFIES DISCIPLINES IS SOLELY TO SEPARATE ARCHITECT'S AND ENGINEER'S SCOPE. IT DOES NOT DEFINE A SUBCONTRACTOR'S SCOPE OF WORK. ANY DISCREPANCIES BETWEEN DRAWINGS, SPECIFICATIONS, CODES OR CONSTRUCTION SEQUENCING SHALL BE BROUGHT TO THE ATTENTION OF THE ARCHITECT PRIOR TO PROCEEDING. NO CONSIDERATION WILL BE GIVEN TO REQUESTS FOR CHANGE ORDERS FOR FAILURE TO OBTAIN AND REVIEW THE COMPLETE SET OF CONSTRUCTION DOCUMENTS, OR FOR FAILURE TO SEEK INTERPRETATION FROM ARCHITECT FOR DISCREPANCIES.



421 Penman Street, Suite 200, Charlotte, NC 28203
 Email: esd@esdarch.com • Phone: 704-373-1900



STRICKLAND BROTHERS
 10 MINUTE OIL CHANGE
 810 SOUTH MAIN STREET
 GRAHAM, NC

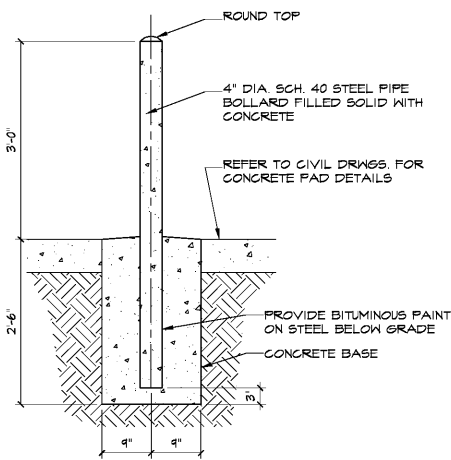


6-5-2020

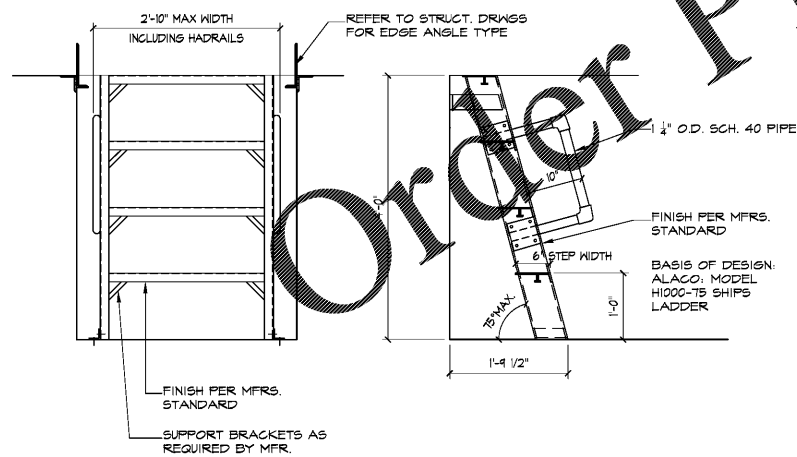
ISSUE DATE: 6/5/20
 REVISION 1: ---
 REVISION 2: ---
 REVISION 3: ---
 REVISION 4: ---
 PROJECT #: 20-127
 CONTENT: BUILDING SECTIONS
 PROJECT ARCHITECT: ECE
 DRAWN BY: VW
 CADD FILE NAME: 20-127_CDSB4.1

THIS DRAWING AND THE DESIGN SHOWN ARE THE PROPERTY OF SAM'S EXPRESS CAR WASH, LLC. THE REPRODUCTION, OR USE OF THIS DRAWING WITHOUT THEIR WRITTEN CONSENT IS PROHIBITED. ANY INFRINGEMENT IS SUBJECT TO LEGAL ACTION.

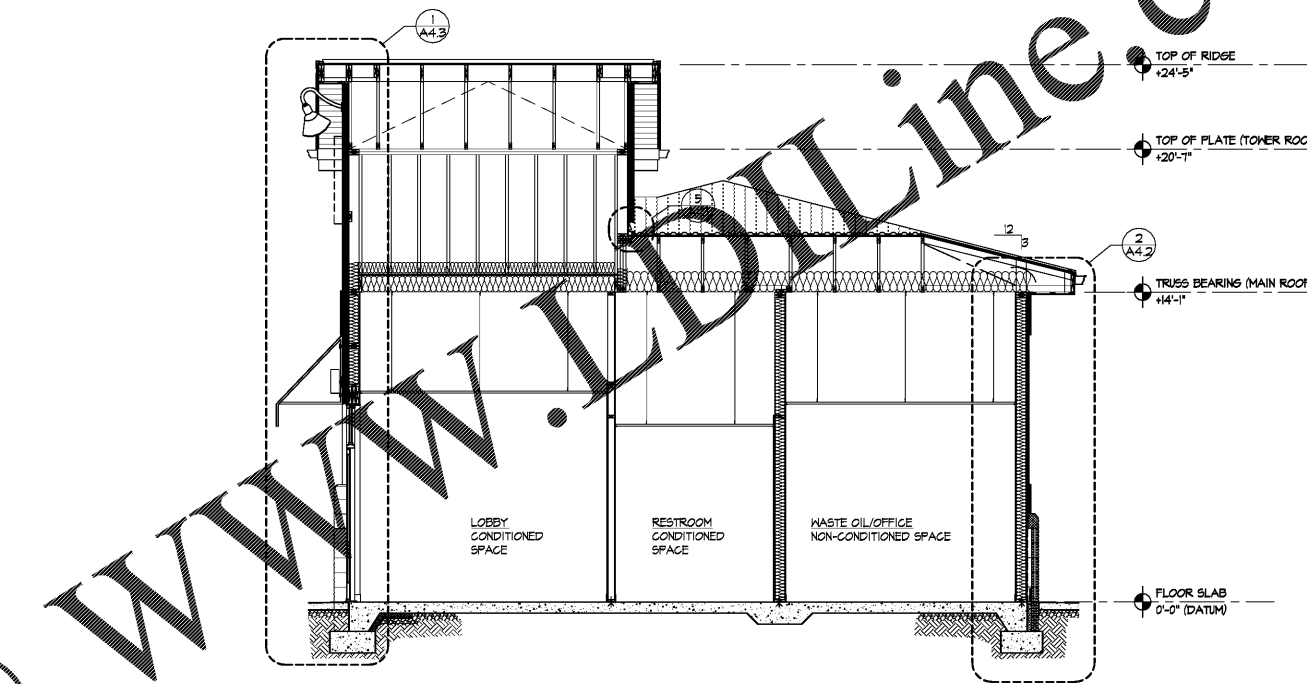
Sheet
A-4.1



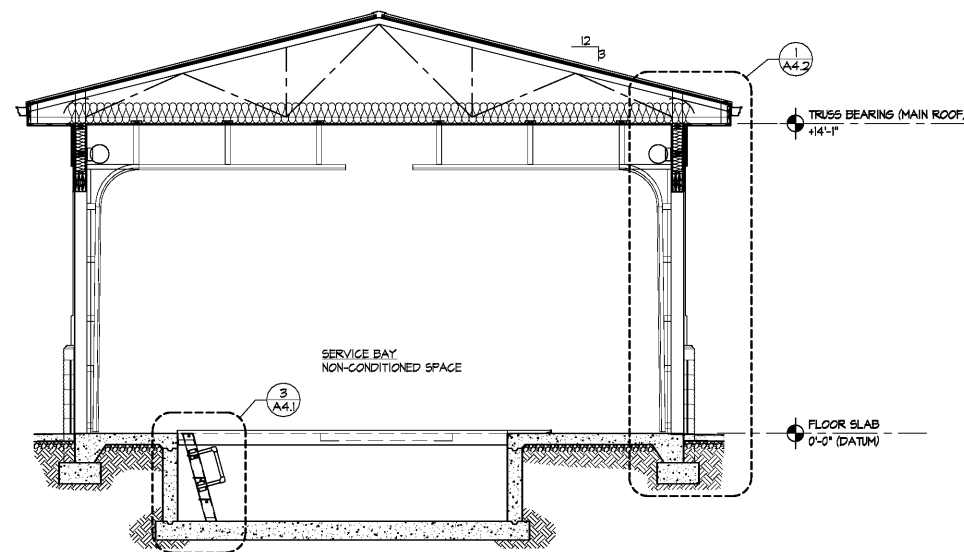
4 BOLLARD DETAIL
 SCALE: 3/4"=1'-0"



3 PIT LADDER DETAIL
 SCALE: 3/4"=1'-0"



2 SECTION @ OFFICE/LOBBY
 SCALE: 1/4"=1'-0"



1 SECTION @ SERVICE BAYS
 SCALE: 1/4"=1'-0"

GENERAL NOTES:
 NOTE 1: ALL MASONRY KEEPS ARE TO HAVE A SPACER WHICH ALLOWS MOISTURE TO PASS THROUGH, BUT NOT ALLOW INSECTS INTO THE WALL. USE CELL-VENT D1006 BY DUR-O-WALL. COLOR IS TO MATCH MORTAR.
 NOTE 2: REFER TO ELEVATION FINISH SCHEDULE ON SHEET A-3.2 FOR EXTERIOR FINISHES.
 NOTE 3: FOR AIR & WATER RESISTIVE BARRIER (WRB) INSTALLATION SHALL BE IN STRICT ACCORDANCE WITH MFR'S INSTRUCTIONS & ALL LAPS TAPED.
 WRB: PROVIDE LIQUID, SPRAY APPLIED CONTINUOUSLY TO ALL SHEATHING SURFACES THROUGHOUT THE BUILDING. PRODUCT TO BE STO "GOLD COAT" OR ARCHITECT'S APPROVED SUBSTITUTION. INSTALLATION SHALL BE IN STRICT ACCORDANCE WITH MFR'S INSTRUCTIONS. WRB SHALL BE CONTINUOUS AT ENTIRE EXTERIOR OF BUILDING. WRB SHALL BE SHINGLED TO SHED WATER. RETURN WRB AT JAMES OF ALL OPENINGS, ANY AND ALL PENETRATIONS SHALL BE PATCHED & SEALED, WATER AND AIR TIGHT WITH MATERIALS APPROVED BY WRAP MFR.
 NOTE 4: SEE STRUCTURAL DRAWINGS FOR HEADERS, BEAMS, STUD SIZES & SPACING.
 NOTE 5:
 -PROVIDE MIN R-42 BATT INSULATION AT RAFTERS ABOVE CONDITIONED SPACES. (LOBBY AND UNSEX TOILETS). FILL ALL VOID AND GAPS.
 -PROVIDE R-30 AT ROOF TRUSSES ABOVE UN-CONDITIONED SPACES. (SERVICE BAYS & OFFICE) PROVIDE BAFFLES TO ALLOW PROPER VENTING OF RAFTERS TO RIDGE/HIP VENTS. FILL ALL VOID AND GAPS.
 -PROVIDE MIN R-5 XPS RIGID INSULATION BOARD FROM TOP OF FOOTING TO 24\"/>

Order Plans @ WWW.LDOLINE.COM