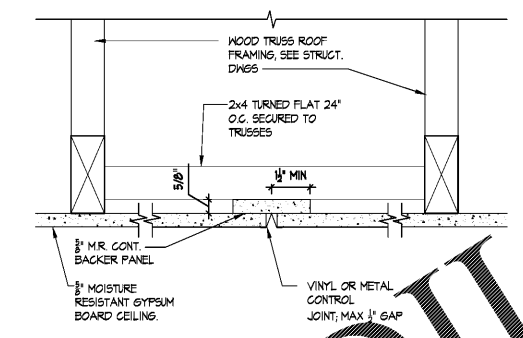
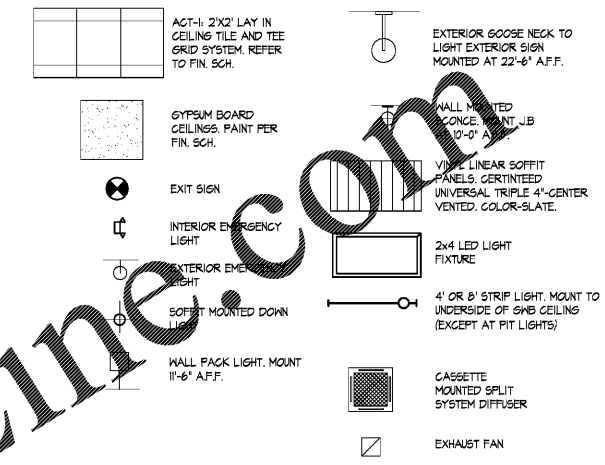


THE ARCHITECT/ENGINEER DOES NOT DEFINE THE SCOPE OF INDIVIDUAL TRADES, SUBCONTRACTORS, MATERIAL SUPPLIERS, OR VENDORS. ANY SHEET NUMBERING SYSTEM USED WHICH IDENTIFIES DISCIPLINES IS SOLELY TO SEPARATE ARCHITECT'S AND ENGINEER'S SCOPE. IT DOES NOT DEFINE A SUBCONTRACTOR'S SCOPE OF WORK. ANY DISCREPANCIES BETWEEN DRAWINGS, SPECIFICATIONS, CODES OR CONSTRUCTION SEQUENCING SHALL BE BROUGHT TO THE ATTENTION OF THE ARCHITECT PRIOR TO PROCEEDING. NO CONSIDERATION WILL BE GIVEN TO REQUESTS FOR CHANGE ORDERS FOR FAILURE TO OBTAIN AND REVIEW THE COMPLETE SET OF CONSTRUCTION DOCUMENTS, OR FOR FAILURE TO SEEK INTERPRETATION FROM ARCHITECT FOR DISCREPANCIES.

LIGHTING & CEILING LEGEND

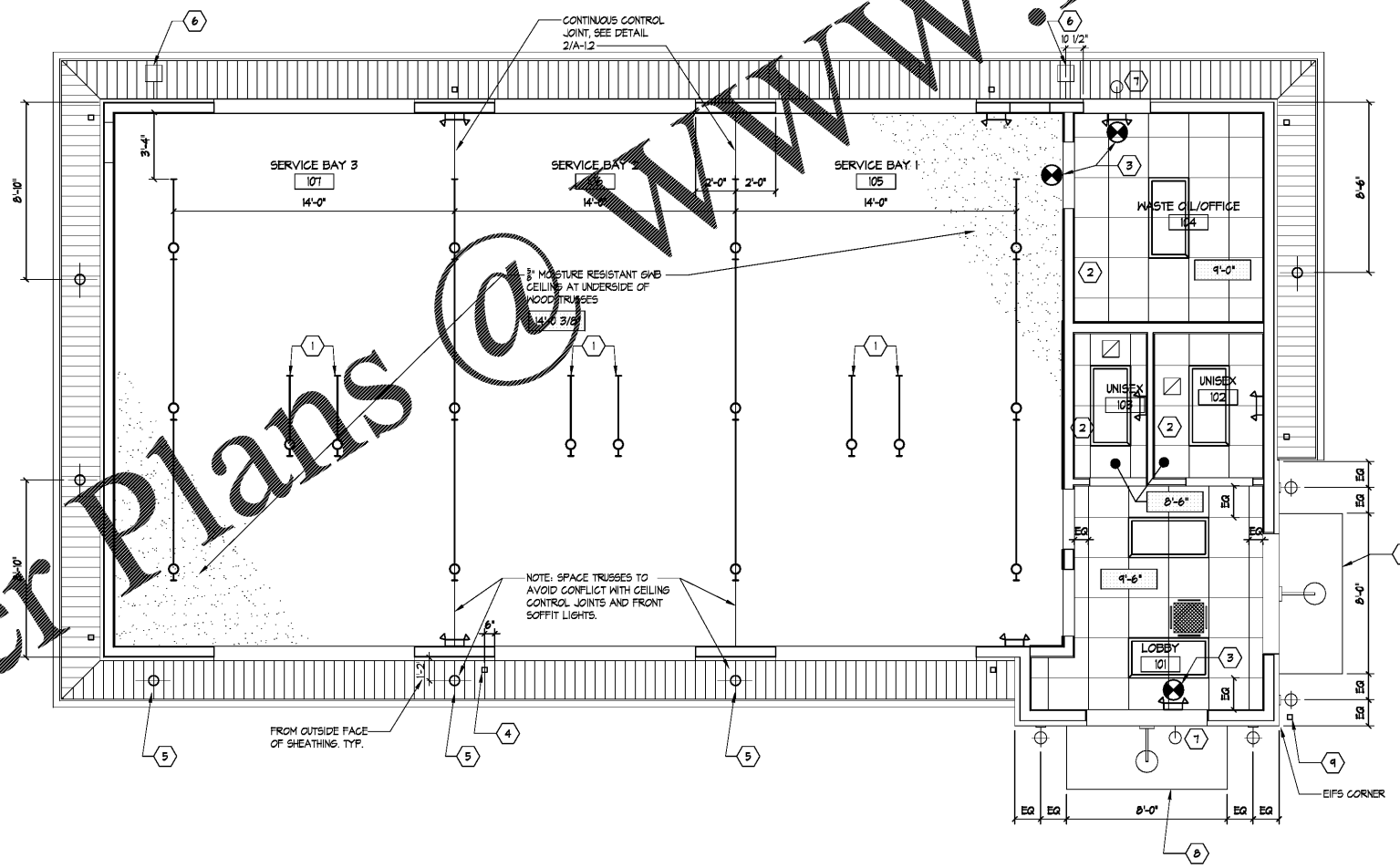


2 CEILING CONTROL JOINT
SCALE: 3/8"=1'-0"

- CEILING NOTES:
- GENERAL CONTRACTOR SHALL NOTIFY ARCHITECT OF ANY PROBLEMS WITH CEILING HEIGHTS OR LIGHT FIXTURES BEFORE FINISH CEILINGS ARE INSTALLED. IF THE CONTRACTOR FAILS TO DO SO, HE SHALL BE RESPONSIBLE FOR TAKING DOWN THE CEILING & LIGHT FIXTURES AND REINSTALLING THEM IN A CONFIGURATION ACCEPTABLE TO THE ARCHITECT AT NO ADDITIONAL COST.
 - COORDINATE WORK WITH OTHER TRADES HAVING WORK IN THE CEILING INCLUDING, BUT NOT LIMITED TO: TELEPHONE, SECURITY, CABLE COMPANIES WHEREVER THEIR RESPECTIVE WORK IS CONTIGUOUS.
 - PROVIDE CUTOUTS AND OTHER SPECIAL PROVISIONS IN ACoustICAL WORK AS REQUIRED FOR LIGHTING FIXTURES, REGISTERS, DIFFUSERS, AND OTHER INSERTED ITEMS.
 - ALL MATERIALS SHALL HAVE CLASS I FLAME SPREAD RATING AND BE INSTALLED IN ACCORDANCE WITH MANUFACTURER'S WRITTEN SPECIFICATIONS AND CODES.
 - ALL JOINTS IN THE TILE SHALL BE SQUARE, LEVEL AND ALIGNED WITH EACH OTHER.
 - ALL CEILING FIXTURES, EXIT SIGNS, SPEAKERS, ETC., SHALL BE CENTERED IN CEILING TILE, UNLESS NOTED OTHERWISE.
 - SEE ENGINEER'S DRAWINGS FOR LIGHTING AND MECHANICAL LAYOUTS. CONTRACTOR SHALL NOTIFY ARCHITECT IMMEDIATELY OF ANY DISCREPANCIES NOTED BETWEEN ARCHITECTURAL AND ENGINEERING DRAWINGS OR BETWEEN ENGINEERING DISCIPLINES. C.G. COORDINATE ALL DUCT DAMPERS TO BE IN REACH FROM ACCESSIBLE CEILINGS.
 - RECESSED CEILING SPEAKERS TO BE INSTALLED BY OWNER'S VENDOR. SC COORDINATE.
 - DIMENSIONS SHOWN ON CEILING GRID PROVIDED TO LOCATE GRID AS SHOWN ON PLAN.

REFLECTED CEILING PLAN KEY NOTES:

- COORDINATE FINAL LOCATION OF PIT LIGHTS WITH OWNER.
- CENTER GRID AND LIGHT IN ROOM.
- EXIT SIGN, CENTER OF DOOR OPENING.
- LOCATE DOWNSPOUT OFF CENTER AT PIER DOWN LIGHT.
- CENTER SOFFIT DOWN LIGHT ON EIFS PIER.
- CENTER WALL PACK ON EIFS PIER UNLESS OTHERWISE NOTED.
- CENTER EMERGENCY LIGHT OVER DOOR OPENING.
- FABRIC ANNING ON ALUM. FRAME.
- LOCATE DOWNSPOUT OFF CENTER AT PIER WALL SCOSGE.



1 REFLECTED CEILING PLAN
SCALE: 1/4"=1'-0"

SEISMIC COMPLIANCE NOTE (SEISMIC DESIGN CATEGORY B): ALL SUSPENDED ELEMENTS IN THE STRUCTURE, INCLUDING CEILINGS, SHALL BE FURNISHED & INSTALLED IN ACCORDANCE WITH THE SEISMIC REQUIREMENTS OF THE INTERNATIONAL BUILDING CODE, CHAPTER 16 (FOR SEISMIC DESIGN CATEGORY 'B') REQUIREMENTS OF ASTM E580 AND THE LATEST VERSION OF CISCA GUIDELINES FOR ZONES 1&2.

Order Plans @



421 Penman Street, Suite 200, Charlotte, NC 28203
Email: esd@esdarch.com • Phone: 704-373-1900



STRICKLAND BROTHERS
10 MINUTE OIL CHANGE
810 SOUTH MAIN STREET
GRAHAM, NC



ISSUE DATE: 6/5/20
REVISION 1: ---
REVISION 2: ---
REVISION 3: ---
REVISION 4: ---
PROJECT #: 20-127
CONTENT: REFLECTED CEILING PLAN & DETAILS
PROJECT ARCHITECT: ECE
DRAWN BY: VW
CADD FILE NAME: 20-127.CDS.A-1.2

THIS DRAWING AND THE DESIGN SHOWN ARE THE PROPERTY OF SAM'S EXPRESS CAR WASH, LLC. THE REPRODUCTION, OR USE OF THIS DRAWING WITHOUT THEIR WRITTEN CONSENT IS PROHIBITED. ANY INFRINGEMENT IS SUBJECT TO LEGAL ACTION.
Sheet

A-1.2