



THE ARCHITECT/ENGINEER DOES NOT DEFINE THE SCOPE OF INDIVIDUAL TRADES, SUBCONTRACTORS, MATERIAL SUPPLIERS, OR VENDORS. ANY SHEET NUMBERING SYSTEM USED WHICH IDENTIFIES DISCIPLINES IS SOLELY TO SEPARATE ARCHITECT'S AND ENGINEER'S SCOPE. IT DOES NOT DEFINE A SUBCONTRACTOR'S SCOPE OF WORK. ANY DISCREPANCIES BETWEEN DRAWINGS, SPECIFICATIONS, CODES OR CONSTRUCTION SEQUENCING SHALL BE BROUGHT TO THE ATTENTION OF THE ARCHITECT PRIOR TO PROCEEDING. NO CONSIDERATION WILL BE GIVEN TO REQUESTS FOR CHANGE ORDERS FOR FAILURE TO OBTAIN AND REVIEW THE COMPLETE SET OF CONSTRUCTION DOCUMENTS, OR FOR FAILURE TO SEEK INTERPRETATION FROM ARCHITECT FOR DISCREPANCIES.

STRICKLAND BROTHERS 10 MINUTE OIL CHANGE

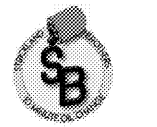
810 SOUTH MAIN STREET
GRAHAM, NC



421 Penman Street, Suite 200, Charlotte, NC 28203
Email: esd@esdarch.com • Phone: 704-373-1900



STRICKLAND BROTHERS
10 MINUTE OIL CHANGE
810 SOUTH MAIN STREET
GRAHAM, NC



6-5-2020

ISSUE DATE: 6/5/20
REVISION 1: _____
REVISION 2: _____
REVISION 3: _____
REVISION 4: _____
PROJECT #: 20-127
CONTENT: COVER SHEET

PROJECT ARCHITECT: ECE
DRAWN BY: VW
CADD FILE NAME: 20-127.CDSIA-01

THIS DRAWING AND THE DESIGN SHOWN ARE THE PROPERTY OF SAM'S EXPRESS CAR WASH, LLC. THE REPRODUCTION OR USE OF THIS DRAWING WITHOUT THEIR WRITTEN CONSENT IS PROHIBITED. ANY INFRINGEMENT IS SUBJECT TO LEGAL ACTION.

Sheet
A-0.1

SHEET INDEX:

COVER/CODES

A-0.1 COVER SHEET
A-0.2 APPENDIX B, LIFE SAFETY PLAN & GENERAL NOTES

SITE/CIVIL

C-1 COVER
C-2 ABBREVIATIONS & LEGEND
C-3 EXISTING CONDITIONS
C-4 DEMOLITION PLAN
C-5 SITE PLAN
C-6 GRADING PLAN
C-7 EROSION CONTROL - STAGE 1
C-8 EROSION CONTROL - STAGE 2
C-9 DETAILS
C-10 EROSION DETAILS

ARCHITECTURAL

A-1.1 FLOOR PLAN
A-1.2 REFLECTED CEILING PLAN & DETAILS
A-1.3 ROOF PLAN & DETAILS
A-3.1 EXTERIOR ELEVATIONS
A-3.2 EXTERIOR ELEVATIONS
A-4.1 BUILDING SECTIONS
A-4.2 WALL SECTIONS
A-4.3 WALL SECTIONS
A-5.1 DOOR & WINDOW SCHEDULES
A-5.2 CASEWORK ELEVATIONS AND DETAILS
A-6.1 FINISH SCHEDULES
A-12.1 ARCHITECTURAL SPECIFICATIONS
A-12.2 ARCHITECTURAL SPECIFICATIONS
A-12.3 ARCHITECTURAL SPECIFICATIONS
A-12.4 ARCHITECTURAL SPECIFICATIONS
A-12.5 ARCHITECTURAL SPECIFICATIONS

STRUCTURAL

S-0.1 STRUCTURAL GENERAL NOTES
S-1.1 FOUNDATION & SLAB PLAN
S-2.1 ROOF FRAMING PLAN
S-3.1 FOUNDATION SECTIONS & DETAILS
S-3.2 SECTIONS & DETAILS
S-4.1 SHEARWALL TYPICAL DETAILS
S-4.2 FRAMING SECTIONS & DETAILS
S-4.3 FRAMING SECTIONS & DETAILS
S-4.4 FRAMING SECTIONS & DETAILS
S-4.5 FRAMING SECTIONS & DETAILS

PLUMBING

P0.1 PLUMBING COVER SHEET
P0.2 PLUMBING SCHEDULES
P2.1 SANITARY AND DOMESTIC WATER PLANS
P2.2 USED OIL, VEHICLE FLUID AND COMP. AIR PLANS

MECHANICAL

M0.1 MECHANICAL COVER SHEET
M1.0 MECHANICAL FLOOR PLAN

ELECTRICAL

E0.1 ELECTRICAL COVER SHEET
E1.0 ELECTRICAL LIGHTING PLAN
E2.0 ELECTRICAL POWER PLAN
E3.0 ELECTRICAL DETAILS
E4.0 ELECTRICAL RISER AND SCHEDULES

SYMBOLS LEGEND

	DETAIL SCALE: ?"=1'-0"	XXXXXX	ROOM INDICATOR
	CENTERLINE INDICATOR	XXXXXX	ROOM TAG WITH FINISHES
	SECTION INDICATOR	000	DOOR TYPE INDICATOR
	EXTERIOR ELEVATION INDICATOR	◇	WINDOW TYPE INDICATOR
	INTERIOR ELEVATION INDICATOR	□	EQUIPMENT INDICATOR
	INTERIOR MULTI-ELEVATION INDICATOR	○	KEYNOTE INDICATOR
	DETAIL INDICATOR (LARGE AREA)	○	CONTROL POINT
	DETAIL INDICATOR (SMALL AREA)	△	REVISION
	WALL TYPES	00'-0"	CEILING HEIGHT INDICATOR
		X 00'-0"	CEILING HEIGHT INDICATOR W/ CEILING TYPE TAG
		← XX-0	FINISH TYPE INDICATOR
		—	MATCHLINE INDICATOR
		—	MATCHLINE INDICATOR

DESIGN TEAM:

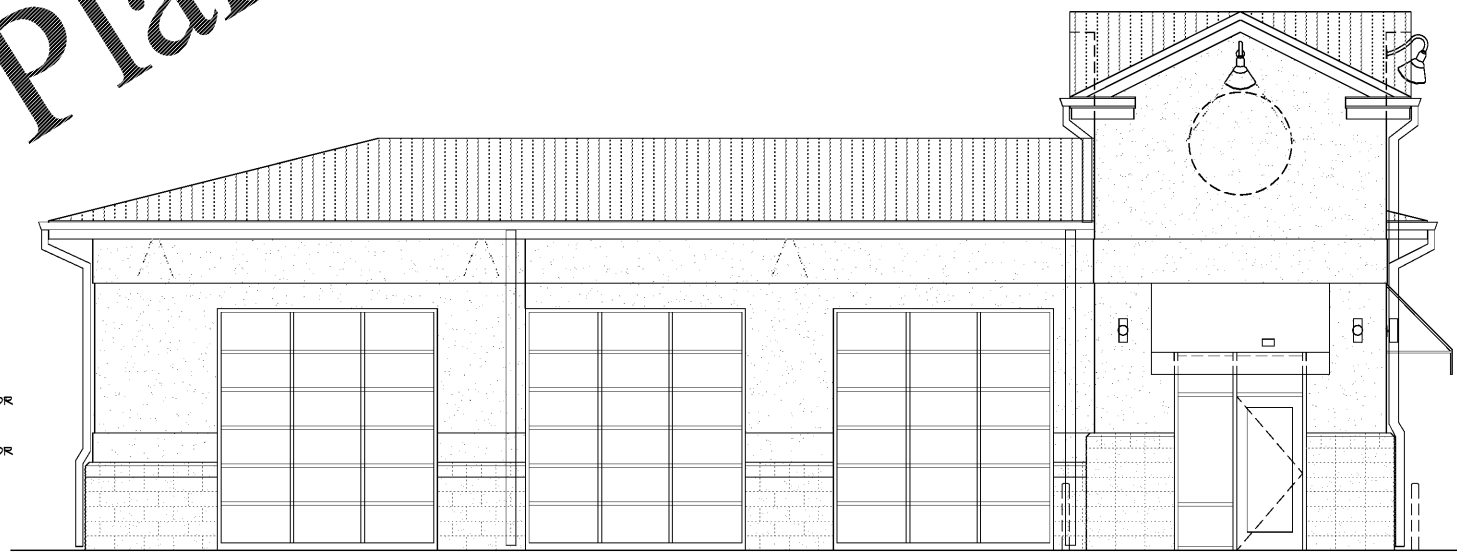
ARCHITECT & INTERIORS:
ESD PARTNERS
421 PENMAN STREET, SUITE 200
CHARLOTTE, NC 28203
CONTACT PERSON: VICTOR MORONTSOFF
EMAIL: vmorontsoff@esdarch.com
TEL: 704-373-1900

CLIENT:
GENERAL DEVELOPMENT
419 NORTH MONROE STREET
SUITE 201
WINSTON-SALEM, NC 27101
EMAIL: BRIAN@GEMCAPDEVELOPMENT.COM
TEL: 336-724-7953

CIVIL ENGINEER:
TEL CONSULTING
8519 TRIAD DRIVE
COLLEGE PARK, NC 27229
EMAIL: rriserame@telconsulting.com
TEL: 336-852-4141

STRUCTURAL ENGINEER:
ARP ENGINEERING
222 EAST FRANKLIN STREET
SUITE A
MONROE, NC 28221
CONTACT PERSON: DEAN ARP
EMAIL: dean@arpeng.com
TEL: 704-225-0714

PME ENGINEER:
G2E SOLUTIONS
147 CENTRAL AVENUE
SUITE 200-C
CHARLOTTE, NC 28205
CONTACT PERSON: RYAN GAY
EMAIL: ryg@e2esolutions.com
TEL: 540-514-9718



VICINITY MAP

