

Floor Finish (F):

- F-1 QUARRY TILE**
Vendor/Manufacturer: Trinity Tile / Metropolitan Ceramics
Pattern/Color: QuarryBasics / 57X Stone Gray
Description: 6" x 6" unglazed quarry tile
Grout: Mapei, color #35 Navajo Brown
- F-2 PORCELAIN FLOOR TILE**
Vendor: Interceramic
Pattern/Color: Montreaux / Gris
Description: 13x13 tile in monolithic layout with borders.
Grout: Mapei, 11 Sahara Beige
- F-3 TUFTED LOOP MODULAR CARPET**
Manufacturer: Interface
F-3.1 Open Circle Pattern: M0581
Style No.: 149000250H, Carrera Colores pattern library, 18z
Color No.: 99
Sample No./Date: 256622-022, 11/14/12
Layout: Brick layout with background stripe oriented perpendicular to length of corridor.
F-3.2 Solid Circle Pattern: M0579
Style No.: 148000250H, Carrera Colores pattern library, 18z
Color No.: 99
Sample No./Date: 256622-021, 11/14/12
Layout: Quarter-turn unless otherwise noted.
F-3.3 Basketweave Pattern: M0056
Style No.: 148010250H, Santiago Colores pattern library, 18z
Color No.: 99
Sample No./Date: 256622-016, 11/5/12
Layout: Brick layout with background stripe oriented as shown on finish plan.
F-3.4 Border Pattern: Farmland Loop
Style No.: 147150250, 18z
Color No.: 99
Sample No./Date: 256622-033, 05/01/19
Layout: Full-tile border unless otherwise noted, background stripe oriented perpendicular to length of border and mitered corners.
Description: Tufted textured loop 50cm x 50cm carpet tile; 18 oz. Universal type 6.6 nylon fiber, 100% solution dyed, GlasBac non-virgin PVC backing, Interscept lifetime anti-microbial, Protek soil-stain protection. Direct glue installation per manufacturer's recommendations.
- F-4 LUXURY VINYL PLANK FLOORING**
Vendor/Manufacturer: Tarkett
Pattern/Color: Woodland Path / T1072-1 Seasoned Cypress
Description: 6"x36"x3mm thick luxury vinyl plank flooring.
- F-5 PORCELAIN FLOOR TILE - UNITS**
Vendor: Daltile
F-5.1 Field Tile Pattern/Color: 12x12 Exquisite / EQ11 Chantilly
F-5.2 Pattern/Color: 2x4 Mosaic Exquisite / EQ11 Chantilly
Grout: Mapei, 11 Sahara Beige

Base Finish (B):

- B-1 RUBBER COVE BASE**
Manufacturer: Johnsonite
B-1.1 Color: 85 Hunter Green
B-1.2 Color: 32 Pebble
- B-2 PORCELAIN TILE BASE**
Vendor: Interceramic
Pattern/Color: Montreaux / Gris 3x13 bullnose with schluter cove
Grout: Mapei, 11 Sahara Beige
- B-3 PAINTED WOOD BASE**
Paint Manufacturer: Sherwin Williams
Color: SW7551 Greek Villa
Description: Semi-gloss enamel paint; low VOC
- B-4 QUARRY TILE BASE**
Vendor/Manufacturer: Trinity Tile / Metropolitan Ceramics
Pattern/Color: QuarryBasics / 57X Stone Gray Q365
Description: 6" x 6" unglazed quarry tile cover/bullnose base
Grout: Mapei, color #35 Navajo Brown

Wall Finish (W):

- W-1 VINYL WALL COVERING w/ MICRO-VENTING**
W-1.1 Pattern: MDC 2859KP4149 Kampala Linen
W-1.2 Pattern: MDC MDD332B4149 Plaid Hatter White Queen
W-1.3 Pattern: MDC MSE1601 Seville Santa Fe
- W-2 CULTURED STACKED STONE**
Manufacturer: Boral
Pattern/Color: Country LedgeStone / Ashfall
- W-3 GLASS TILE w/ METAL TILE ACCENT**
Vendor/Manufacturer: Interceramic
Pattern/Color - field tile: Interglass Shimmer Blends / Ocean 1x1
Vendor: Daltile
Pattern/Color - accent lattice tile: Metallica / Stainless Steel SS50
Description: 1x1 mesh mounted glass tile field on diagonal with accent stainless steel tile lattice; 1x1 stainless steel tiles in 1" w diagonal lattice pattern with 12x12 mesh-mounted segments of 1x1 glass tiles on diagonal between lattice bands.
Grout: Mapei, 02 Pewter
- W-4 RIGID VINYL SHEET**
Manufacturer: InPro Corporation
W-4.1 Pattern/Color-unit corridors: #305 / 0124 Hunter Green
W-4.2 Pattern/Color-dining room: #305 / 0119 Pepperdust
Description: 100' roll x 36" w x .040" thick rigid vinyl sheet and accessories required for complete installation including 407 top cap and 409 inside corner.
- W-5 WALL PAINT**
Manufacturer: Sherwin Williams
Color: SW7029 Agreeable Gray
Description: Flat latex paint on drywall; semi-gloss epoxy paint on CMU; low VOC
- W-6 WALL PAINT**
Manufacturer: Sherwin Williams
Color: SW7551 Greek Villa
Description: Flat latex paint on drywall; masonry paint on CMU; low VOC
- W-7 FRP PANELS**
Manufacturer: Marite
Pattern/Color: Standard FRP Pebbled Surface / P145 Silver
- W-8 PORCELAIN WALL TILE**
Vendor: Daltile
Field Tile Pattern/Color: 4x16 Elevare / EL40 Lunar
Description: 4x16 field tile in brick pattern to ceiling.
Grout: Mapei, 11 Sahara Beige

W-9 THEMED DINING BACKSPLASH TILE

Vendor: Daltile
Pattern/Color: Ayers Rock 6.5x6.5 and 13x13 / AY04 Majestic Mound
Pattern/Color: Matte Wall Tile 2x6 Chair Rail / Matte Biscuit K775
Pattern/Color: Matte Wall Tile 12x6 Liner / Matte Biscuit K775
Description: Layout includes typical area between base and upper cabinets with accent area below arched bridge; typical area layout - top and bottom rows of 6.5x6.5 field tile with center row of 6.5x6.5 tile on diagonal - rows separated horizontally by 1/2x6 liner. Accent area below bridge - 13x13 field tile on diagonal with vertical border of chair rail @ edge of wall cabinets; vertical chair rail at exposed ends of backsplash; 5.5x6.5 field tile on diagonal at pass-thru backsplash.
Grout: Mapei, 11 Sahara Beige

Ceiling Finish (C):

C-1 PAINTED DRYWALL
Manufacturer: Sherwin Williams
Color: SW7551 Greek Villa
Description: Flat latex paint; low VOC

Trim Finish (T):

T-1 PAINTED TRIM
Manufacturer: Sherwin Williams
Color: SW7551 Greek Villa
Description: Semi-gloss enamel paint; low VOC

Millwork (M):

M-1 MILLWORK GROUP 1
Description: Finger-joint white pine or equal; semi-gloss enamel; S4S profiles to have eased edges.
1-piece base (shoe mould) at hardwood and luxury vinyl flooring only - 3/4" x 5-1/2" S4S
2-piece crown - 3/4" x 5-1/2" S4S apron; 2" x 2" cove
1-piece casing - 3/4" x 5-1/2" S4S

Countertop (CR):

CR-1 GRANITE COUNTERTOP
Color: Verde Butterfly
Description: 3cm granite countertop & splash; polished finish, eased edges

CR-2 GRANITE VANITY TOP
Color: Costa Esmeralda
Description: 3cm vanity top & splash; polished finish, eased edges

CR-3 CULTURED STONE VANITY TOP
Manufacturer: Pariahandic Marble - US
Pattern/Color: White on White 12-12
Description: Cultured stone vanity top w/ integral bowl and splash.

Casework (CS):

CS-1 STAINED WOOD CASEWORK - RECEPTION
Description: Kneewall to have stained wood paneling on front and side. Work area to have pencil drawers and drawer pedestals - lockable. Transaction height counter on front side to include stone and glass surfaces. Accessible height counter on side to include stone surface.
Stain Color: Match Wilsonart 7943K-07 Colombian Walnut
Cabinet Hardware: Atlas Homewares
Bronte Collection
352-BRN 5-1/16" c-c pull
Brushed Nickel finish

CS-2 PLASTIC LAMINATE BATHROOM VANITY
Description: Plastic laminate sloped vanity skirt
Laminate manufacturer: Wilsonart
Pattern/Color: 7943K-07 Colombian Walnut

CS-3 PLASTIC LAMINATE CABINETS
Description: Plastic laminate base and wall cabinets; adjustable shelves; lockable.
Laminate manufacturer: Wilsonart
Pattern/Color: 7943K-07 Colombian Walnut
Cabinet Hardware: Brushed Stainless 4" ADA compliant "C" pulls

CS-4 STAINED WOOD COMPUTER WORK STATIONS - LIBRARY
Description: Stained hardwood vertical supports to create individual work stations with vertical curved top dividers above counter; grommets at each work station as required; accessible height 3/4 length panels below counter to hide wiring installed 6" from back of casework with tough-latch hardware.
Stain Color: Match Wilsonart 7943K-07 Colombian Walnut

CS-5 STAINED WOOD SERVING CASEWORK - DINING ROOM

Description: Stained hardwood base cabinets with top drawers and adj. shelves; wall cabinets to have adj. shelves, crown moulding & undercabinet lighting; all cabinet doors and drawers to be lockable. Cabinet doors to be milled stick/flat panel style; drawer fronts to be flat; wall cabinets to have clear glass panels.
Stain Color: Match Wilsonart 7943K-07 Colombian Walnut

Cabinet Hardware: Atlas Homewares
Bronte Collection
352-BRN 5-1/16" c-c pull
Brushed Nickel finish

CS-6 STAINED WOOD BOOKCASES - LIVING ROOM

Description: Stained hardwood base cabinets with open shelf hutch; milled stick/flat panel style doors & adj shelves; adjustable wood shelves at hutch; crown moulding; all cabinets lockable.
Stain Color: Match Wilsonart 7943K-07 Colombian Walnut
Cabinet Hardware: Atlas Homewares
Bronte Collection
352-BRN 5-1/16" c-c pull
Brushed Nickel finish

CS-7 THERMOFOL/LAMINATE VANITY SKIRT

Description: Plastic laminate apron and end panels as required as exposed ends; thermofoil sloped panel with milled panels
Color: To be selected by designer from manufacturer's standard colors.

SOURCE LIST

Interface	Trinity Tile	Daltile
Alison Millsaps-Morris	Andy King	Fergus Hill
Alison.Millsaps-Morris@interface.com	aking@trinitysurfaces.com	fergus.hill@daltile.com
Interceramic	Teknoffor / Spartan Surfaces	MDC Wall Covering
Kevin Musser	Nicole Quinn	David Hale
kmusser@interceramic.com	nquinn@spartansurfaces.com	dhale@mdcwall.com

END OF COLOR SCHEDULE

PRUITTHEALTH - SAVANNAH ADDITION
Project No.: 201909

ROOM FINISH SCHEDULE

May 22, 2019

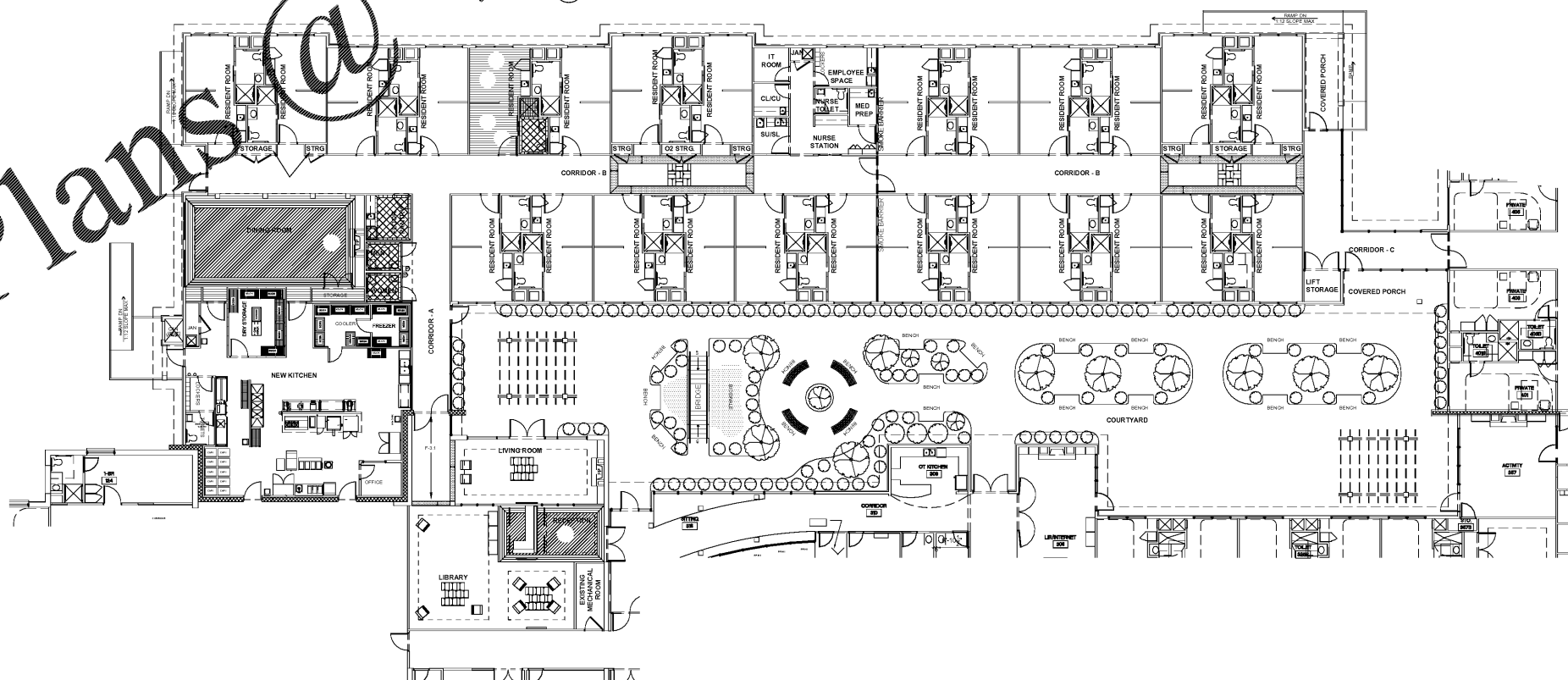
Rm #	Room Name	Floor	Base	Wall	Ceiling	Trim	Millwork	Countertop	Casework	Notes
	Reception	F-4	B-3	W-1.1	C-1	T-1	M-1	CR-1	CS-1	N-10
	Library	F-3	B-3	W-1.1	C-1	T-1	M-1	CR-1	CS-1	
	Living Room	F-3.3, F-3.4	B-3	W-1.1, W-2	C-1	T-1	M-1	CR-1	CS-6	N-11, N-12
	Corridor - A	F-3.1, F-3.2, F-3.4	B-1.1, B-3	W-1.2, W-3, W-4.1	C-1	T-1				N-5, N-6, N-7, N-13, N-15
	Women	F-2	B-2	W-1.3	C-1	T-1		CR-2	CS-2	N-4, N-2
	Men	F-2	B-2	W-1.3	C-1	T-1		CR-2	CS-2	N-4, N-2
	Floor Pantry	F-2	B-2	W-7	C-1	T-1		CR-1	CS-3	
	Dining Room	F-4	B-3	W-1.1, W-2, W-4.2, W-9	C-1	T-1		CR-1	CS-5	N-10, N-11, N-14
	Storage	F-4	B-1.2	W-6	C-1	T-1				
	Kitchen	F-1	B-4	W-6, W-7	C-1	T-1				N-3
	Janitor	F-1	B-4	W-6, W-7	C-1	T-1				N-3
	Dry Storage	F-1	B-4	W-6	C-1	T-1				
	Lockers	F-1	B-4	W-6	C-1	T-1				
	Emp. Toilet	F-1	B-4	W-6	C-1	T-1		CR-3	CS-2	N-2
	Office	F-1	B-4	W-6	C-1	T-1				
	Corridor - B	F-3.1, F-3.2, F-3.4	B-1.1	W-1.2, W-4.1	C-1	T-1				N-5, N-6, N-7, N-13
	Corridor Storage	F-3.1	B-1.1	W-6	C-1	T-1				
	Porch	F-13.2								
	Lift Storage	F-3.1	B-1.1	W-6	C-1	T-1				
	Corridor - C	F-3.1, F-3.2, F-3.4	B-1.1	W-1.2, W-4.1	C-1	T-1				N-5, N-6, N-7, N-13
	Typical Unit	F-4	B-1.2	W-8	C-1	T-1		CR-3	CS-7	N-1, N-10
	Typical Unit Toilet	F-5.1, F-5.2	N/A	W-8	C-1	T-1				N-9

NOTES:

- N-1 Provide transition strip between carpet and painted concrete and between carpet and VCT or luxury vinyl flooring. Color: Johnsonite CTA-86-C Hunter Green.
- N-2 Provide stone threshold at entry door to transition between carpet and vinyl flooring.
- N-3 FRP panels to be 1/2" thick semi-gloss enamel wall panel above counter.
- N-4 Tile Pattern: F-2, 1/2" x 1/2" tile installed on diagonal with 1/2" tile border at room perimeter. See Finish Plan for tile layout.
- N-5 Typical residential room color - W-6 above handrail, W-4 below handrail.
- N-6 Polyureth. finish backs to meet health standard by InPro: Herndal - #8110FV/VV, 6-1/8", color 0555 American Walnut Backer - Palladium 3D trim horizontal board, 6", 1/2" thick, color 0238 Feather.
- N-7 Wainscot bumpers meet health standard by InPro: #1600 wall guard, 6", color at W-1.1 - 0119 Pepperdust, color at W-1.2 - custom Hunter Green. Install 1/8" a.f.f. to bottom edge of wall bumper.
- N-8 Corner guards to be 1/2" thick meet health standard by InPro: #139BN/#139BN/#139BN, color at W-1.1 - 0119 Pepperdust; color at W-1.2 - custom Hunter Green.
- N-9 See Finish Plan for typical layout of residential unit and bath. Tile Pattern: F-5.1 12x12 field tile installed on diagonal with half tile border at room perimeter.
- N-10 6" x 6" vinyl plank border with 1/2" tile installed on diagonal, mitre corners at border. See Finish Plan for layout.
- N-11 To have stacked stone surround with stained wood mantle - see interior elevations for more information.
- N-12 Typical: F-3.4 border between columns only.
- N-13 F-3.1 carpet tile typical at corridor; F-3.4 inset border carpet tile to mirror ceiling feature above with F-3.2 carpet tile inside border. See Finish Plan for layout and location of carpet inserts.
- N-14 W-9 at serving area backsplash only; tile to extend from granite splash to underside of upper cabinet; exposed tile edges to be bullnosed.
- N-15 W-4 glass tile at wall behind drinking fountains only - see interior elevations for more information.

END OF ROOM FINISH SCHEDULE

3 ROOM FINISH SCHEDULE
NOT TO SCALE



2 COLOR SCHEDULE
NOT TO SCALE

1 FINISH PLAN
SCALE: 1/16" = 1'-0"



PRUITTHEALTH SAVANNAH ADDITION
12825 WHITE BLUFF ROAD
SAVANNAH, GA 31419

NO.	DATE	DESCRIPTION
1	-/-/-	
2	-/-/-	
3	-/-/-	
4	-/-/-	
5	-/-/-	
6	-/-/-	

Sheet Title:

FINISH PLAN

Date: 05/22/19
Project No.: 201909

ID1-0