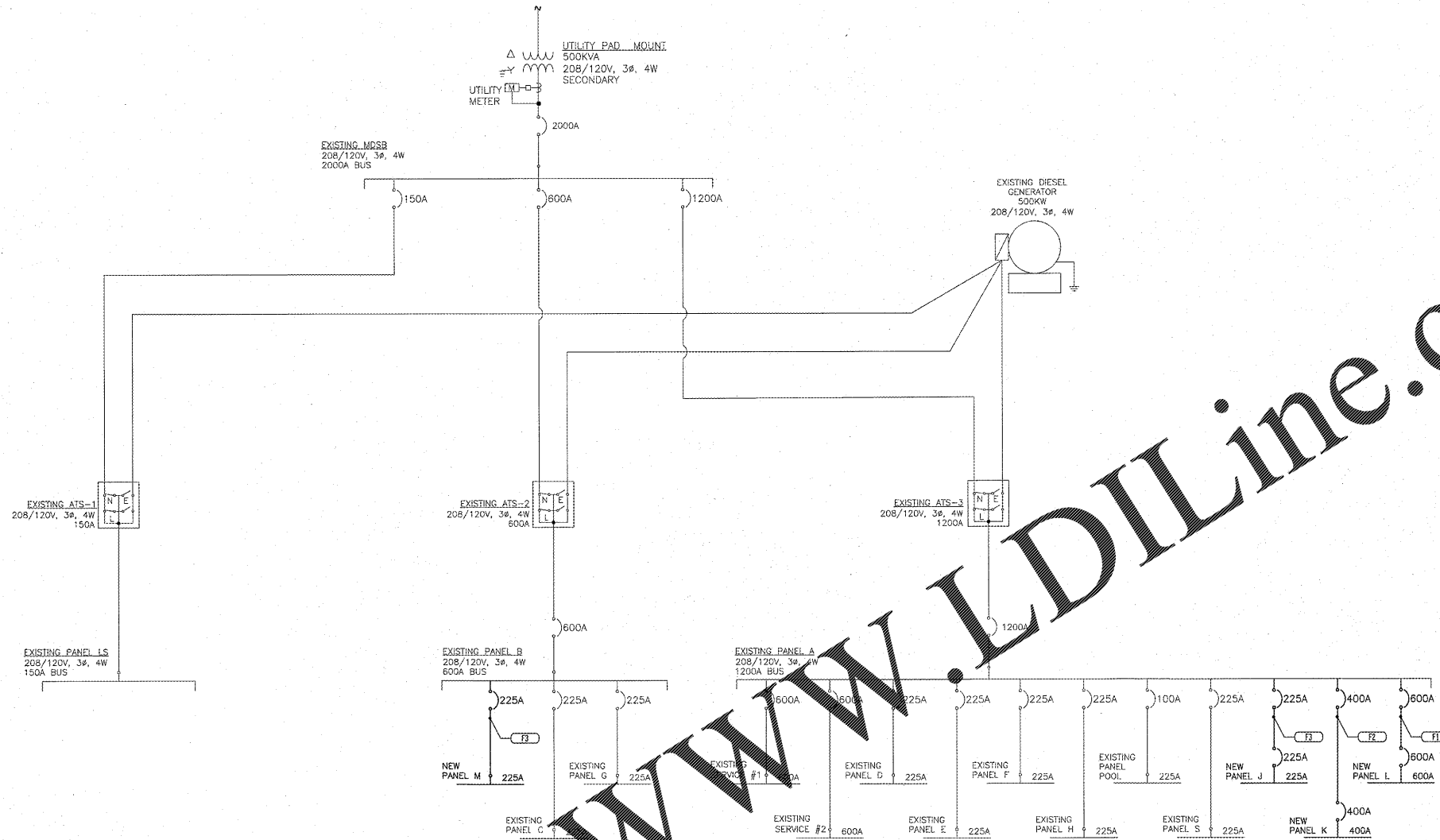


EXISTING SERVICE CALCULATIONS	
1)	POWER COMPANY REPORTED PEAK DEMAND OF 192KW IN PAST 12 MONTHS.
2)	$192,000W/0.8PF = 240,000VA$
3)	$240/(208*1.732) = 667A$ PEAK DEMAND
4)	$667A * 1.25(EXISTING PEAK) = 834A$
5)	EXISTING 2000A MDSB HAS SUFFICIENT CAPACITY FOR ADDITIONAL DESIGN LOAD.

FEEDER SCHEDULE	
F1	2 SETS OF 4#350KCMIL, 1#10 - 4" C
F2	2 SETS OF 4#4/0, 1#3G - 2-1/2" C
F3	4#4/0, 1#4G - 2-1/2" C

A COORDINATION STUDY SHALL BE SUCCESSFULLY CONDUCTED PER NEC 700.27 & 701.18 SECTIONS FOR THE LIFE SAFETY AND CRITICAL POWER PANELS AND BREAKERS BEFORE THAT EQUIPMENT CAN BE ORDERED. CONTRACTOR SHALL UPGRADE PANELS AND BREAKERS AS NEEDED WITH NO ADDITIONAL COST TO THE OWNER.



A PARTIAL MODIFIED SINGLE LINE DIAGRAM
E5.0 SCALE: NTS

Order Plans @

WWW.LDILine.com

ARCHITECT
TIMOTHY
KURMASKIE
AIA, NCARB

1030 Washington St
Raleigh, NC 27605
Phone: 919-846-1600
Fax: 919-846-9404
ARCHITECTSKIT.COM

THE DRAWINGS AND DESIGN SHOWN ARE THE PROPERTY OF ARCHITECT TIMOTHY KURMASKIE, AIA, NCARB. THE REPRODUCTION OR USE OF THIS PROPERTY WITHOUT THE WRITTEN CONSENT FROM THE ARCHITECT IS PROHIBITED AND ANY REINFORCEMENT OF THESE RIGHTS IS SUBJECT TO LEGAL ACTION.



DAVID SIMS & ASSOCIATES, P.C.
Consulting Engineers
Arboretum Centre
108 Giles Avenue - Suite 100
Wilmington, N.C. 28403
(910) 791-8016 (OFFICE)
(910) 395-5734 (FAX)

ALTERATION & ADDITION TO:
PruittHealth Savannah
12825 WHITE BLUFF ROAD
SAVANNAH, GA 31419

Project Reference Numbers
Architect's Project No. 180017

Drawn By:

REVISIONS

DATES

PHASE	ISSUED
PERMIT SET	05/22/19

SINGLE LINE DIAGRAM

SHEET NUMBER

E5.0