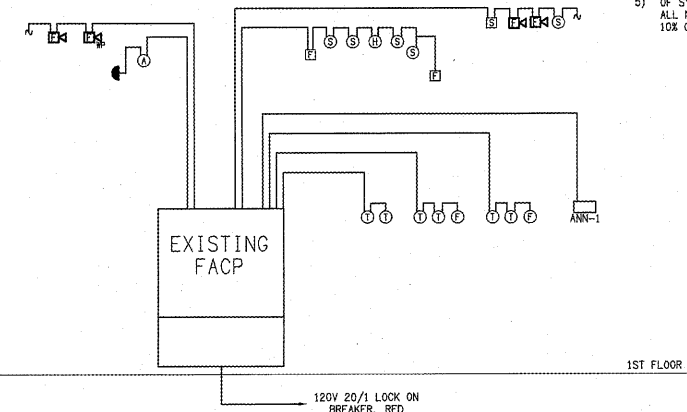
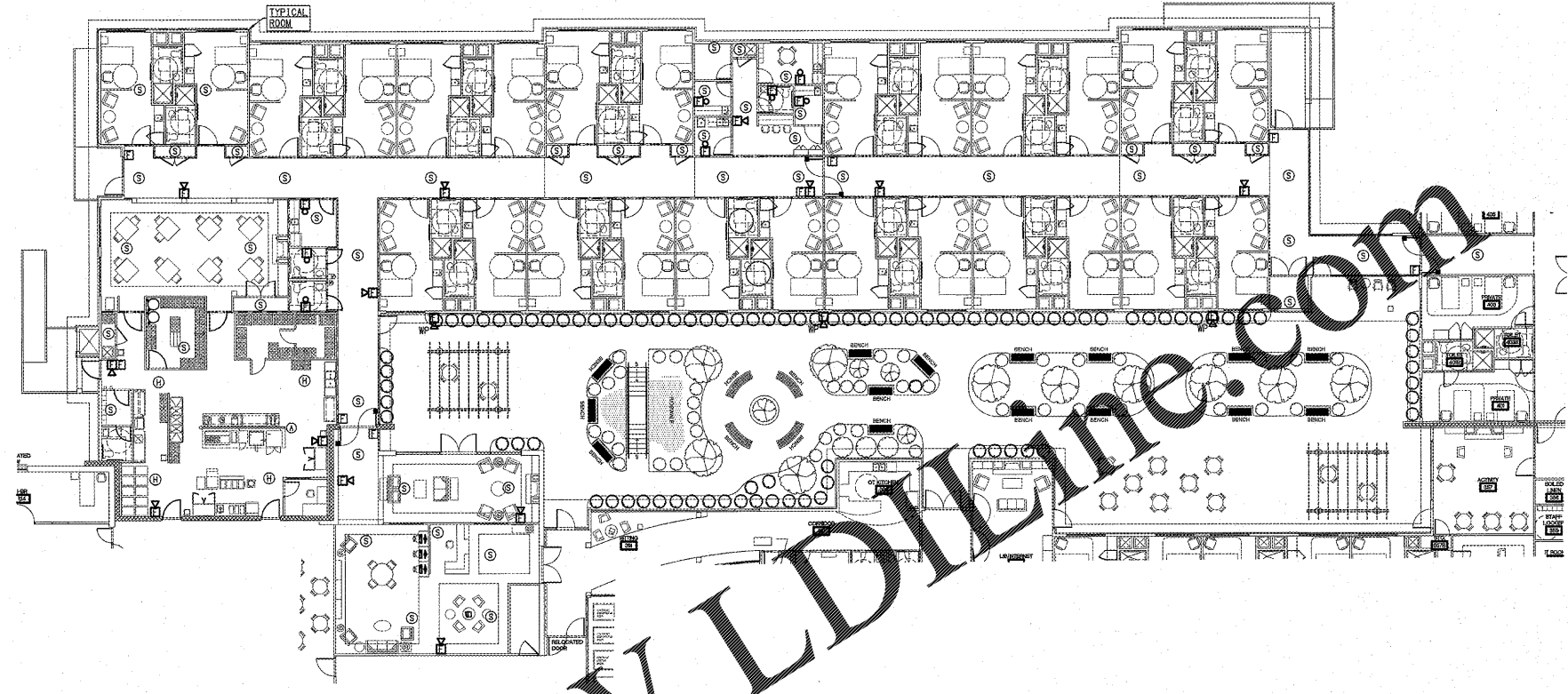


FIRE ALARM LEGEND	
SYMBOL	DESCRIPTION
⊞	MANUAL PULL STATION MTD. AT 4" 0" TO CENTER
⊙	SMOKE DETECTOR, PHOTOELECTRIC TYPE, CEILING MOUNTED
⊞	CHIME/STROBE, MOUNTED AT 84" TO CENTERLINE OF OUTLET BOX
⊞	STROBE ONLY, MOUNTED AT 84" TO CENTERLINE OF OUTLET BOX
⊙	HEAT DETECTOR, RATE OF RISE INDICATED IN DEGREES
■	MAGNETIC DOOR HOLDERS
⊙	KITCHEN ANSUL SYSTEM
WP	WEATHERPROOF

- EXISTING FIRE ALARM NOTES**
- EXISTING RISER SHOWN IS SCHEMATIC ONLY AND DOES NOT INCLUDE ALL TYPES AND QUANTITIES OF DEVICES. FIRE ALARM CONTRACTOR SHALL DESIGN, CERTIFY AND PROVIDE/INSTALL SYSTEM BASED ON EXISTING SHOP DRAWINGS OF EXISTING SYSTEM. ALL COMPONENTS, DEVICES, ZONING, ADDRESSES, AND WIRING CONFIGURATIONS SHALL BE OF THE SAME MAKE MODEL AND/OR TYPE AS THAT OF THE EXISTING SYSTEM.
  - EC SHALL COORDINATE WITH FIRE ALARM CONTRACTOR TO PROVIDE ALL BACK BOXES AND RACEWAYS ASSOCIATED WITH NEW SYSTEM INFRASTRUCTURE.
  - FIRE ALARM CONTRACTOR SHALL COORDINATE WITH MECHANICAL CONTRACTOR FOR CONNECTION OF ANY DUCT SMOKE DETECTORS.
  - FIRE ALARM CONTRACTOR SHALL COORDINATE WITH FIRE SPRINKLER CONTRACTOR FOR LOCATION, QUANTITY AND CONNECTION OF ANY TAMPER, FLOW OR OTHER FIRE PROTECTION RELATED DEVICES.
  - COMPLETE AND SUBMIT NFPA 72 TESTING DOCUMENTATION TO THE ARCHITECT UPON COMPLETION OF SYSTEM INSTALLATION. CONTRACTOR SHALL TEST ALL NEW COMPONENTS INSTALLED AND A MINIMUM OF 10% OF EXISTING SYSTEM COMPONENTS.



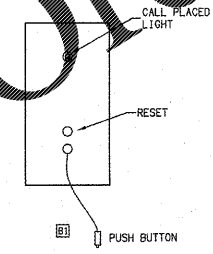
**D FIRE ALARM RISER**  
E3.1 SCALE: NTS



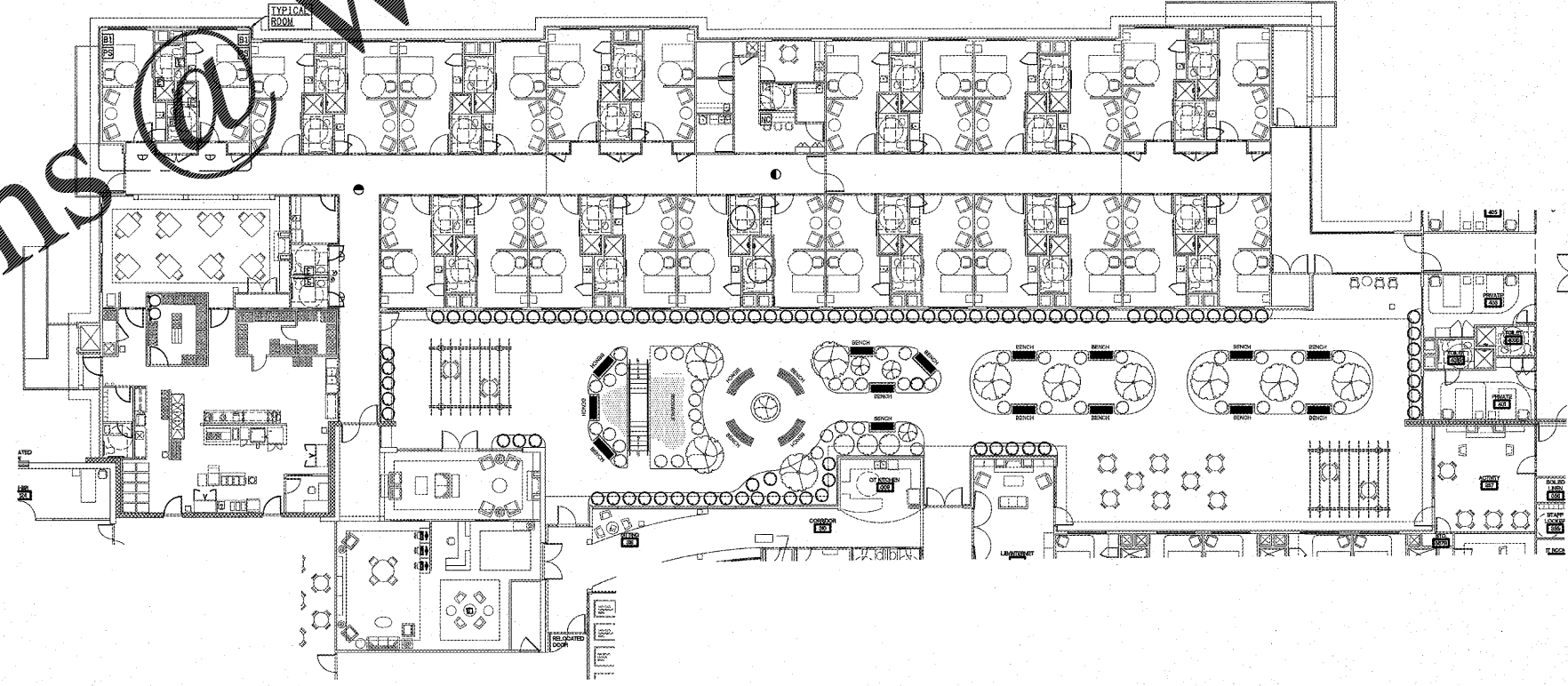
**C FIRE ALARM PLAN**  
E3.0 SCALE: 1/16" = 1'-0"

NURSE'S CALL LEGEND	
SYMBOL	DESCRIPTION
⊞	NURSE'S CALL STATION
⊞	NURSE'S CALL, BEDSIDE STATION, @ 3'-6" AFF., ONE STATION
⊞	NURSE'S CALL, EMERGENCY STATION IN TOILET AND BATHS 3'-6" TO CENTERLINE, WATERPROOF
⊞	PILLOW SPEAKER CONNECTION @ 16" AFF.
⊞	ROOM DOME LIGHT
⊞	ZONE LIGHT

- EXISTING NURSE CALL NOTES**
- CONTRACTOR SHALL PROVIDE ALL NEW DEVICES COMPONENTS AND WIRING TO MATCH AND BE COMPATIBLE WITH EXISTING NURSE CALL SYSTEM.
  - NEW SYSTEM COMPONENTS SHALL ANNUNCIATE AT NEW NURSES STATION AND AT MAIN NURSE CALL PANEL.



**B NURSE'S CALL BEDSIDE STATION**  
E3.0 SCALE: NTS



**A NURSE CALL PLAN**  
E3.0 SCALE: 1/16" = 1'-0"

ARCHITECT  
TIMOTHY  
KURMASKIE  
AIA, NCARB

1030 Washington St  
Raleigh, NC 27605  
Phone: 919-846-1600  
Fax: 919-846-9404  
ARCHITECTSKT.COM

THE DRAWINGS AND DESIGN SHOWN ARE THE PROPERTY OF ARCHITECT TIMOTHY KURMASKIE, AIA, NCARB. THE REPRODUCTION OR USE OF THIS PROPERTY WITHOUT THE WRITTEN CONSENT FROM THE ARCHITECT IS PROHIBITED AND ANY REPRODUCTION OF THESE RIGHTS IS SUBJECT TO LEGAL ACTION.  
COPYRIGHT 2019  
(ARCHITECT TIMOTHY KURMASKIE, AIA, NCARB)



DAVID SIMS & ASSOCIATES, P.C.  
Consulting Engineers  
Arboretum Centre  
108 Giles Avenue - Suite 100  
Wilmington, N.C. 28403  
(910) 791-8016 (OFFICE)  
(910) 395-5734 (FAX)

ALTERATION & ADDITION TO:  
**PruittHealth Savannah**  
12825 WHITE BLUFF ROAD  
SAVANNAH, GA 31419

Project Reference Numbers  
Architect's Project No. 180017

Drawn By:  
REVISIONS

DATES	
PHASE	ISSUED
PERMIT SET	05/22/19

FIRE ALARM &  
NURSE CALL  
PLANS & DETAILS  
SHEET NUMBER

**E3.0**